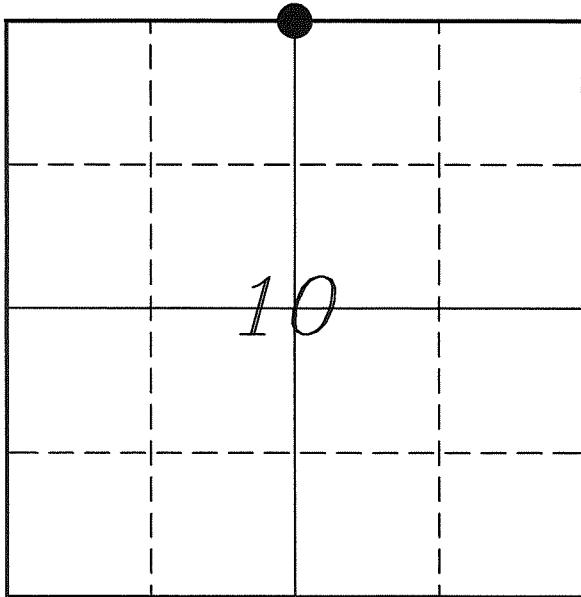


---

# U. S. PUBLIC LAND SURVEY MONUMENT RECORD

---

## SECTION 10, T14N, R5W, TOWN OF COON VERNON COUNTY, WISCONSIN



LOCATION OF LANDMARK

Crew: Laurence E Johns III

Date: 28 March 2009

VERNON COUNTY COORDINATE SYSTEM	
Northing	205347.039
Easting	683303.817
Elevation	
TYPE OF LANDMARK:	
Set 1 1/4" x 30" Iron Rod	
BEARINGS ARE REFERENCED TO:	
Vernon County Coordinates	

---

*Describe any record evidence, monument evidence, testimonial evidence or any other material evidence you considered and whether the monument was found or restored through acceptance of an obliterated evidence location.*

Could not locate any bearing trees of record.

There is an old 3-way fence corner at this location.

Measured East from the fence corner to the NE Corner of Section 10, the distance fit very well with Knower's distance.

Measure West from the fence corner to the North/South fence line in the general location of the NW Corner of Section 10. The distance is somewhat short, but the terrain would account for that, it fit well enough to verify the fence corner location.

I accepted the fence corner as the best available evidence of the original government corner.

Set 1 1/4" x 30" Iron Rod because of very rocky conditions. Could not dig a hole deep enough to set a Lunde Monument.

Iron Rod is up 6" above ground.

---

*Describe or show any material discrepancy between the location of the restored corner and that of the corner previously restored or re-established.*

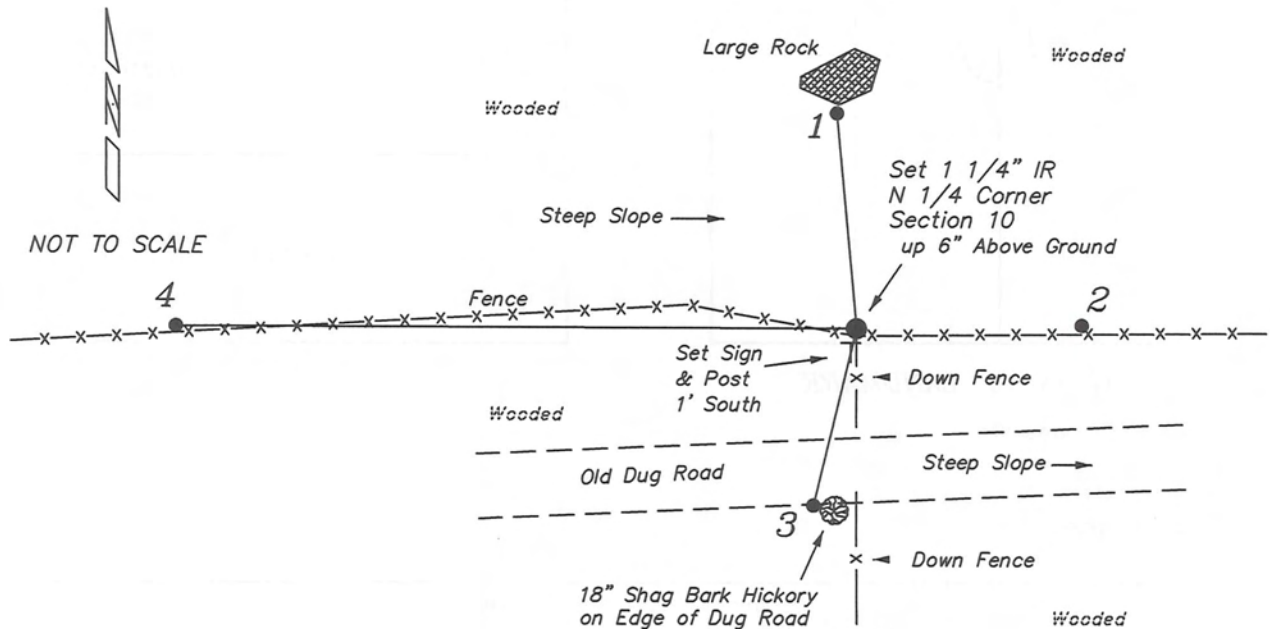
This corner was established by Alfred Brown in October 1846.

Wm Knower was here, in August 1888, during a survey of Section 10 and renewed the ties on the found Gov't corner.

Wm Knower was here again, in October 1889, during a survey of Section 3 and found the Gov't corner.

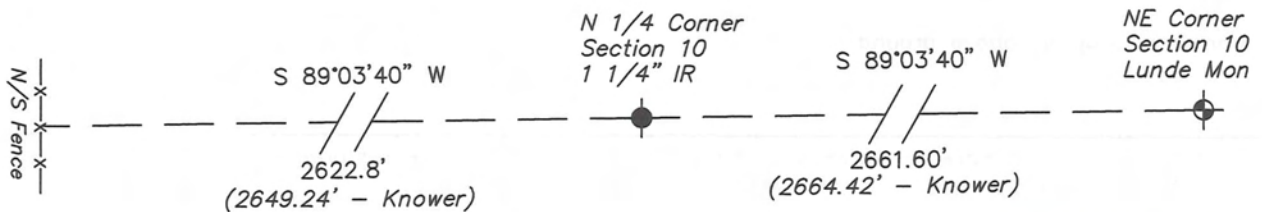
## RECORD OF DURABLE WITNESS MONUMENTS

NO	DESCRIPTION	BEARING	DISTANCE
1	Set 3/4" x 18" Iron Rod On South Edge of Large Rock	N 05°06'41" W	61.97'
2	Set 3/4" x 18" Iron Rod In Fence Line	N 89°08'23" E	64.62'
3	Set 3/4" x 18" Iron Rod NW Side of 18" Shag Bark Hickory	S 13°28'24" W	52.18'
4	Set 3/4" x 18" Iron Rod In Fence Line	N 89°50'38" W	194.90'

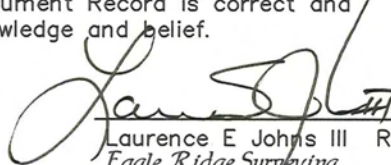



### PLAN VIEW DRAWING OF REFERENCE TIES

Map Showing Distance And Direction To Other Public Land Survey Corners Used For Re-Establishing The Corner



I, Laurence E Johns III RLS 2804, Registered Land Surveyor, hereby certify that the corner location shown on this record was determined by me or under my direction and control, and that this U.S. Public Land Survey Monument Record is correct and complete to the best of my knowledge and belief.

  
 Laurence E Johns III RLS 2804  
 Eagle Ridge Surveying  
 PO Box 213  
 Wilton, Wisconsin  
 28 March 2009

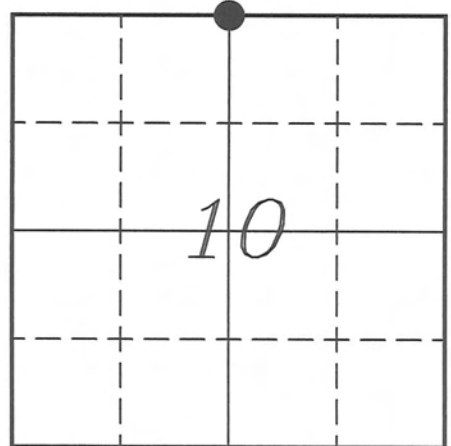
  
 LAURENCE E. JOHNS III  
 S-2804  
 WILTON, WISCONSIN  
 LAND SURVEYOR  
 28 MAR 09

**VERNON COUNTY COORDINATE SUBMISSION FORM**  
**"As An Addendum To"**  
**VERNON COUNTY**  
**CERTIFIED U.S. PUBLIC LAND SURVEY MONUMENT RECORD**

INSTRUCTIONS: THIS RECORD FORM SHOULD BE USED WHEN COORDINATES ARE PROVIDED FOR A PUBLIC LAND SURVEY CORNER AND SHALL INCLUDE ALL OF THE FOLLOWING ELEMENTS (A-D)

(A) IDENTIFY THE CORNER BY REFERENCE TO THE U.S. PUBLIC LAND SURVEY SYSTEM IN DIAGRAM AT RIGHT

● = CORNER MONUMENT



T 14 N, R 5 W

(B) COORDINATES:

GEOGRAPHIC (Degrees Minutes Seconds)

LATITUDE: 43° 42' 37.508" N

LONGITUDE: 90° 57' 35.728" W

ELLIPSOID HT (m): \_\_\_\_\_

DATUM: NAD 1983 (2007)

GEOID03 ADJ: -32.553

ORTHOMETRIC HT: \_\_\_\_\_

VERNON COUNTY (U.S. FEET)

Coord Quality (+/-)

NORTHING (Y): 205347.039 \_\_\_\_\_

EASTING (X): 683303.817 \_\_\_\_\_

GPS METHOD USED TO COMPUTE COORDINATES (check as applicable)

- RTK Observations     Static Baselines     OPUS-RS Solution     OPUS-S Solution  
 Combination of GPS Observations & Conventional Procedures

Was a Least Squares Adjustment Used to Compute Coordinates? Yes /  No

BASE CONTROL USED FOR COORDINATE COMPUTATION

Station Name	Station Coordinates	Date/Time
<u>OPUS Control Station</u>	<u>43° 42' 26.353" N 90° 56' 40.776" W</u> <u>N - 204209.304 E - 687338.056</u>	<u>03/13/2009 - 10:43</u>
<u>Same</u>		<u>03/28/2009 - 12:44</u>

(C) REASON FOR COORDINATES SUBMITTAL (check one)

- Being Filed With a New U.S. PLS Monument Record  
 To Correct the Coordinates Listed on a Previously Filed PLS Monument Record  
 To Provide Coordinates for Previously Filed PLS Monument Record without Coordinates  
 To Provide Supplemental Coordinates for a Previously Filed PLS Monument Record

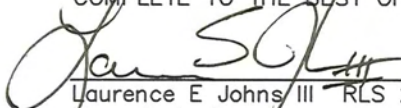
MOST RECENT PLS MONUMENT RECORD DATE:

R.L.S. WHO CREATED MOST RECENT PLS MONUMENT RECORD:

(D) AGENT(S) PERFORMING GPS OBSERVATIONS & COORDINATE COMPUTATION

- 1) LAURENCE E JOHNS III  
 2) \_\_\_\_\_

I, LAURENCE E JOHNS III RLS 2804, REGISTERED LAND SURVEYOR, HEREBY CERTIFY THAT THE COORDINATES PROVIDED ON THIS RECORD WERE DETERMINED BY ME OR UNDER MY DIRECTION AND CONTROL AND THAT THIS COORDINATE SUBMISSION FORM IS CORRECT AND COMPLETE TO THE BEST OF MY KNOWLEDGE AND BELIEF.

  
 Laurence E Johns III RLS 2804  
 Eagle Ridge Surveying  
 PO Box 213  
 Wilton, Wisconsin  
 28 March 2009

