

# Vernon County Certified U.S. Public Land Survey Monument Record

INSTRUCTIONS: THIS RECORD SHALL SHOW THE LOCATION OF THE CORNER AND SHALL INCLUDE ALL OF THE FOLLOWING ELEMENTS (A-I)

(A) IDENTIFY THE CORNER BY REFERENCE TO THE U.S. PUBLIC LAND SURVEY SYSTEM

■ = CORNER MONUMENT RESTORED

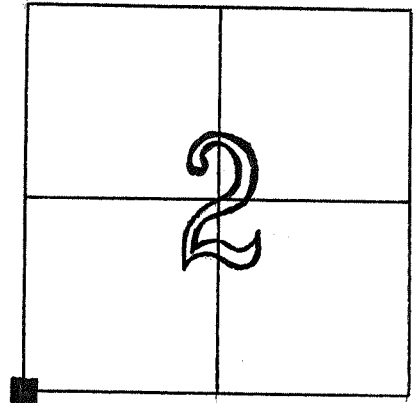
WITNESSES TO CORNER LOCATION: Rodney H. Maxwell  
Laurence E. Johns III

STATE PLANE COORDINATES (WISCONSIN SOUTH ZONE)

NORTHING: Not determined  
EASTING: Not determined

VERNON COUNTY COORDINATES

NORTHING: N 205390.678  
EASTING: E 685964.991



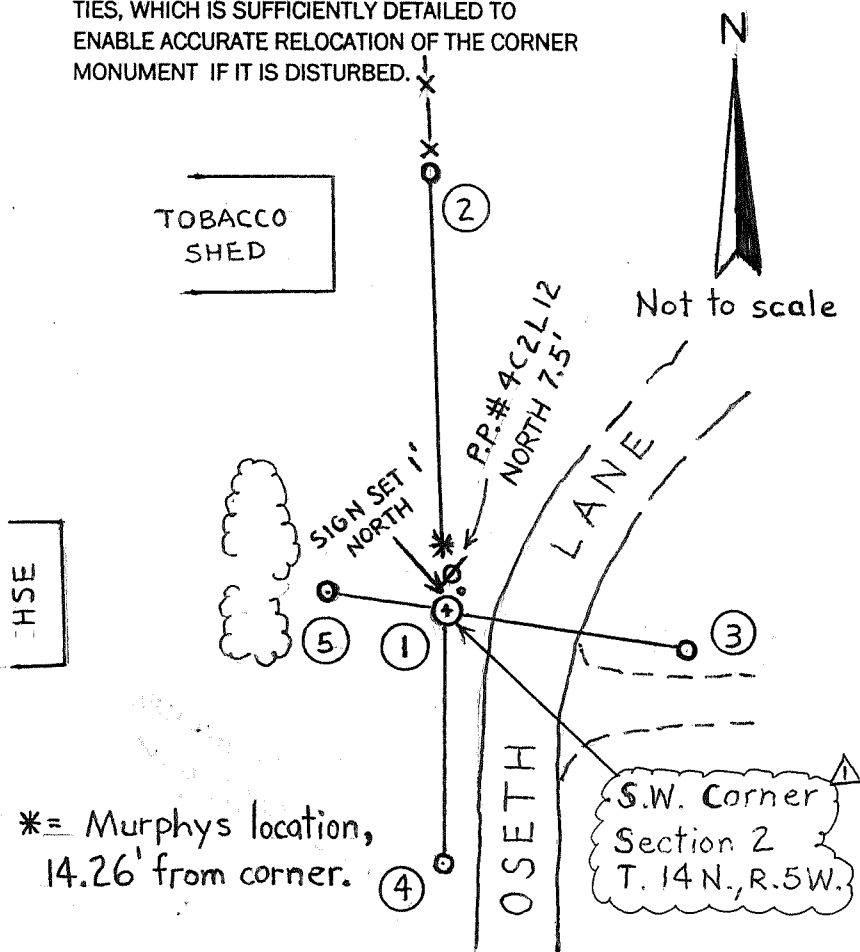
SW Cor. Section 2  
T. 14 N., R. 5 W., Town of  
Coon, Vernon Co., Wis.

(B) DESCRIBE ANY RECORD EVIDENCE, MONUMENT EVIDENCE, OCCUPATIONAL EVIDENCE, TESTIMONIAL EVIDENCE OR ANY OTHER MATERIAL EVIDENCE YOU CONSIDERED, AND WHETHER THE MONUMENT WAS FOUND OR PLACED.

Joseph S. Murphy shows this corner on a plat of survey dated 12/6/1980.  
F. Curtis Crook used Murphys line on a plat of survey dated 5/5/1990.  
Both neighbors said a N-S fence once existed, no E-W fence. No evidence of corner found.

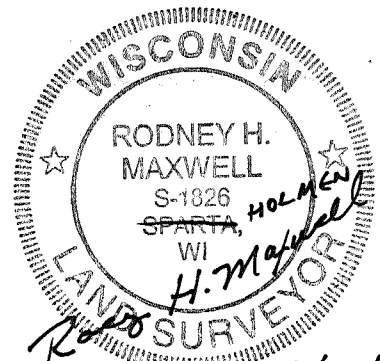
(C) IN THE PLAN VIEW DRAWING BELOW, PROVIDE REFERENCE TIES TO AT LEAST 4 WITNESS MONUMENTS OR, IF THE LOCATION IS WITHIN A MUNICIPALITY, TO AT LEAST 2 WITNESS MONUMENTS, (WITNESS MONUMENTS SHALL MEET STATE AND VERNON COUNTY REQUIREMENTS.)

(D) SHOW A PLAN VIEW DRAWING, DEPICTING THE RELEVANT MONUMENTS AND REFERENCE TIES, WHICH IS SUFFICIENTLY DETAILED TO ENABLE ACCURATE RELOCATION OF THE CORNER MONUMENT IF IT IS DISTURBED.



### MONUMENTS & TIES

- ① = Set Vernon County Monument
- ② = 3/4" x 18" I. Rod set N2°06'29"W, 119.19'
- ③ = 3/4" x 18" I. Rod set S81°20'51"E, 62.69'
- ④ = 3/4" x 18" I. Rod set S1°53'46"W, 65.31'
- ⑤ = 3/4" x 18" I. Rod set N80°54'57"W, 31.15'



Rev 5/14/09 RHM

4/10/09

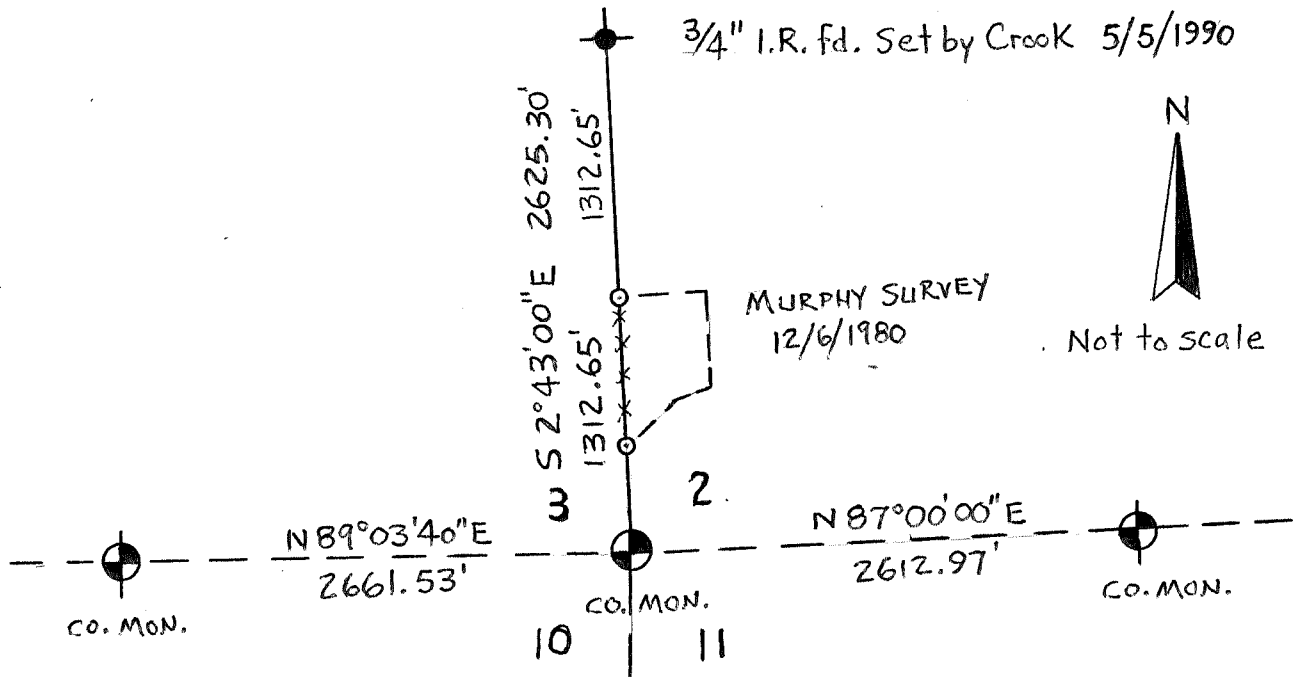
(E) DESCRIBE ANY MATERIAL DISCREPANCY BETWEEN THE LOCATION OF THE CORNER AS RESTORED OR REESTABLISHED AND THE LOCATION OF THAT CORNER AS PREVIOUSLY RESTORED OR REESTABLISHED BY DISTANCE AND DIRECTION. SHOW THE DISCREPANCY ON THE PLAN VIEW DRAWING UNDER (D) ABOVE. SHOW THE DISTANCES BETWEEN THE CORNER AS PREVIOUSLY RESTORED OR REESTABLISHED AND (1) THE CORNER AS RESTORED OR REESTABLISHED, AND (2) TO AT LEAST 2 OF THE WITNESS MONUMENTS AS SHOWN ON THE DRAWING IN (D), ABOVE.

Joseph S. Murphy shows a '40' distance of 1298.39' on his 12/6/80 survey. F. Curtis Crook used Murphy line to establish the W<sup>1</sup>/<sub>4</sub> of Sec. 2 and uses a '40' dist. of 1313.22 feet (West line NW-SW, Sec. 2). Doubling Crooks distance fits Section work in Sections 2, 3, 10 & 11 better and was used.

(F) WAS THE CORNER RESTORED THROUGH THE ACCEPTANCE OF (1) AN OBLITERATED EVIDENCE LOCATION, OR (2) A FOUND PERPETUATED LOCATION?

1.

(G & H) WAS THE CORNER REESTABLISHED THROUGH LOST CORNER PROPORTIONATE METHOD? IF SO, SHOW THE METHOD, INCLUDING THE DIRECTION AND DISTANCE TO THE OTHER PUBLIC SURVEY CORNERS USED AS EVIDENCE OR USED FOR PROPORTIONING IN DETERMINING THE CORNER LOCATION.

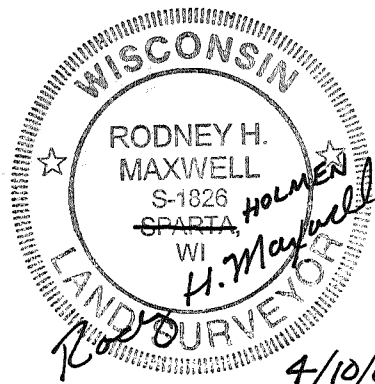


ADDITIONAL SURVEYOR COMMENTS: Adjoining land owners stated no fence ever existing East-West. Murphy may not have enough information to determine a correct distance. Also, a 12" landscape spike was found N 18° 37' E, 3.5 feet of the corner, indicating previous similar survey work.

(I) I, RODNEY H. MAXWELL, REGISTERED LAND SURVEYOR, HEREBY CERTIFY THAT THE LOCATION SHOWN ON THIS RECORD WAS DETERMINED BY ME AND THAT THIS RECORD IS CORRECT AND COMPLETE TO THE BEST OF MY KNOWLEDGE AND BELIEF.

*Rodney H. Maxwell*  
 RODNEY H. MAXWELL WISCONSIN RLS, S-1826  
 623 AMY DR #13  
 HOLMEN, WI 54636

4/10/09  
 DATE



# VERNON COUNTY COORDINATE FORM

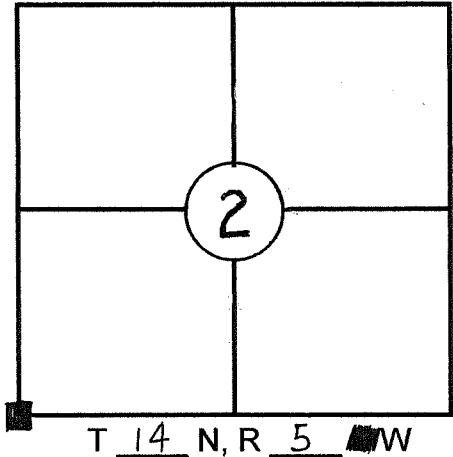
"As An Addendum To"

## A CERTIFIED U.S. PUBLIC LAND SURVEY MONUMENT RECORD

INSTRUCTIONS: THIS RECORD FORM SHOULD BE USED WHEN COORDINATES ARE PROVIDED FOR A PUBLIC LAND SURVEY CORNER AND SHALL INCLUDE ALL OF THE FOLLOWING ELEMENTS (A-D)

(A) IDENTIFY THE CORNER BY REFERENCE TO THE U.S. PUBLIC LAND SURVEY SYSTEM IN DIAGRAM AT RIGHT

■ = CORNER MONUMENT



(B) COORDINATES:

GEOGRAPHIC (Degrees Minutes Decimal Seconds to 4 places):

LATITUDE: 43° 42' 37.9932"

LONGITUDE: 90° 56' 59.5006"

ELLIPSOID HT (m): 359.341

HORIZONTAL DATUM: \_\_\_\_\_

ORTHOMETRIC HT (U.S. ft): 1285.53

VERTICAL DATUM: NAVD 88

VERNON COUNTY (U.S. FEET)

NORTHING (Y): 205390.678

EASTING (X): 685964.991

Coord. Quality (+/-)

\_\_\_\_\_

\_\_\_\_\_

METHOD USED TO COMPUTE COORDINATES (check and complete as applicable):

RTK Observations     Static Baselines     OPUS Solution (attach copy of OPUS report)

Combination of conventional procedures with GPS observations to set temporary control

Was a Least Squares Adjustment Used to Compute Coordinate? Yes / No

For Non-OPUS Based Solutions, List the Control Stations Used for Coordinate Computations (a minimum of 2 different control stations or 2 different time combinations from the same control station are required):

Obs. #	Control Station Name	Station Coordinates (Lat/Long)	Date	Time

\* Please List Additional Control Stations Used on Back of Form

**When a direct observation of the corner is not possible, and a combination of different GPS and/or conventional procedures must be used to determine coordinate values, provide a brief description of your procedures on the back of form.**

(C) REASON FOR COORDINATE SUBMITTAL (check one):

- Being Filed With a New U.S. PLS Monument Record
- To Correct the Coordinates Listed on a Previously Filed PLS Monument Record
- To Provide Coordinates for a Previously Filed PLS Monument Record without Coordinates
- To Provide Supplemental Coordinates for a Previously Filed PLS Monument Record

R.L.S. & DATE OF PLS MONUMENT RECORD: Rodney H. Maxwell 4/10/09

(D) AGENT(S) PERFORMING GPS OBSERVATIONS & COORDINATE COMPUTATION

1) Laurence E. Johns III

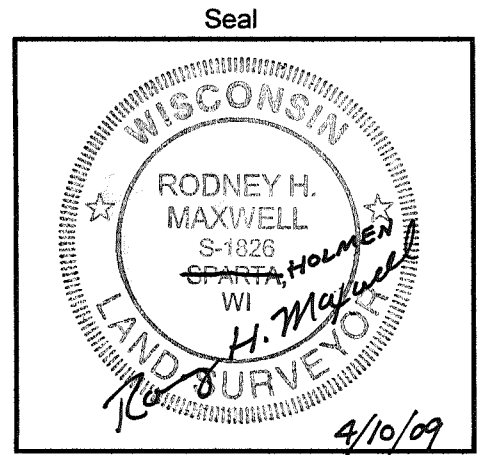
2) Rodney H. Maxwell

1, Rodney H. Maxwell

CERTIFY THAT THE COORDINATES PROVIDED ON THIS RECORD WERE DETERMINED BY ME OR UNDER MY DIRECTION AND CONTROL AND THAT THIS COORDINATE SUBMISSION FORM IS CORRECT AND COMPLETE TO THE BEST OF MY KNOWLEDGE AND BELIEF.

Rodney H. Maxwell  
SIGNATURE

4/10/09  
DATE



\* Please Provide Any Additional Notes/Information on Back of Form