

# Vernon County Certified U.S. Public Land Survey Monument Record

INSTRUCTIONS: THIS RECORD SHALL SHOW THE LOCATION OF THE CORNER AND SHALL INCLUDE ALL OF THE FOLLOWING ELEMENTS (A-I)

(A) IDENTIFY THE CORNER BY REFERENCE TO THE U.S. PUBLIC LAND SURVEY SYSTEM

■ = CORNER MONUMENT RESTORED

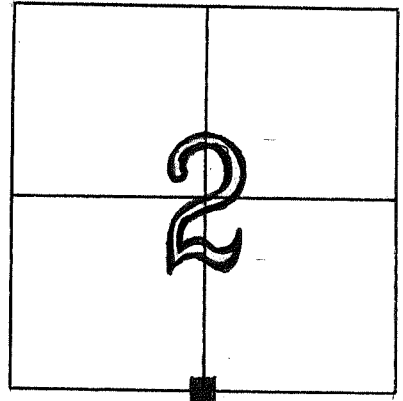
WITNESSES TO CORNER LOCATION: Rodney H. Maxwell  
Laurence E. Johns III

STATE PLANE COORDINATES (WISCONSIN SOUTH ZONE)

NORTHING: Not determined  
EASTING: Not determined

VERNON COUNTY COORDINATES

NORTHING: N 205527.394  
EASTING: E 688574.383



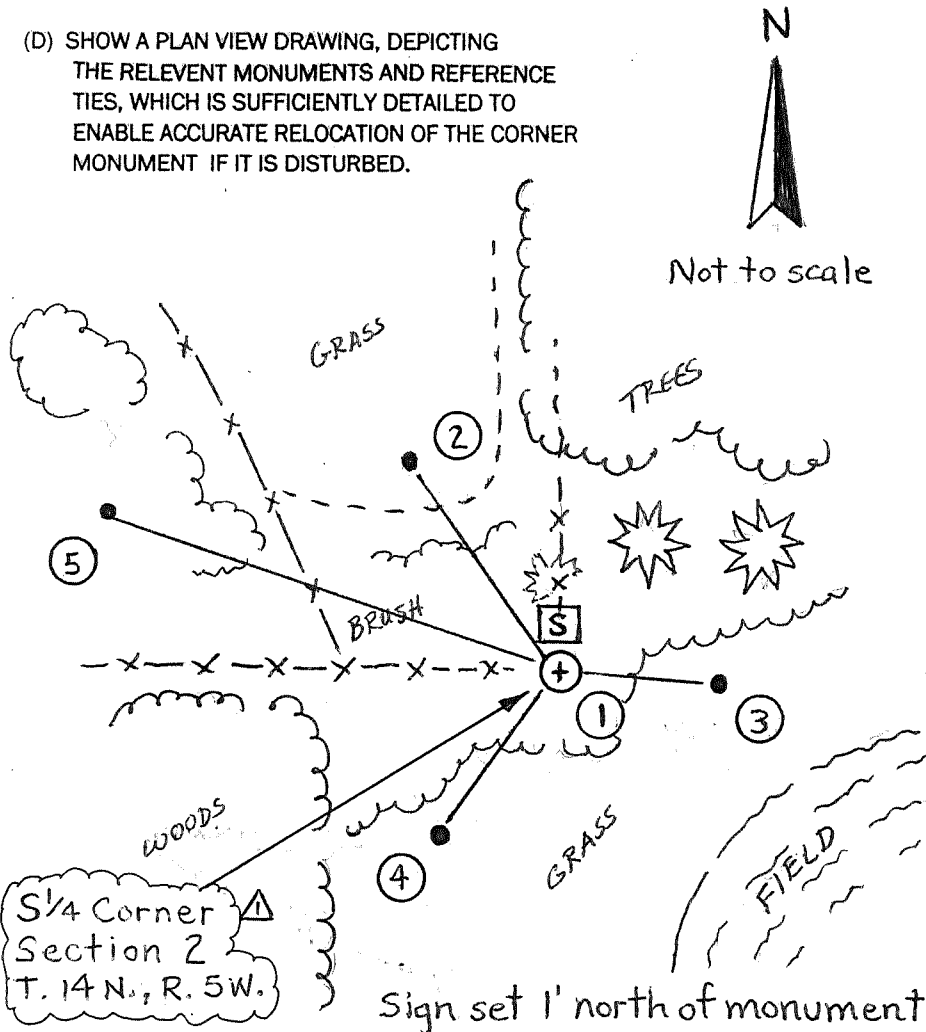
S 1/4 Cor. Section 2,  
T. 14 N., R. 5 W., Town of  
Coon, Vernon Co., Wis.

(B) DESCRIBE ANY RECORD EVIDENCE, MONUMENT EVIDENCE, OCCUPATIONAL EVIDENCE, TESTIMONIAL EVIDENCE OR ANY OTHER MATERIAL EVIDENCE YOU CONSIDERED, AND WHETHER THE MONUMENT WAS FOUND OR PLACED.

This corner is at the intersection of 2 ancient fences. No remnant of a post could be found. Measurements to a found stone set by Kowner at the center of the NE 1/4 of Section 11 supports this location.

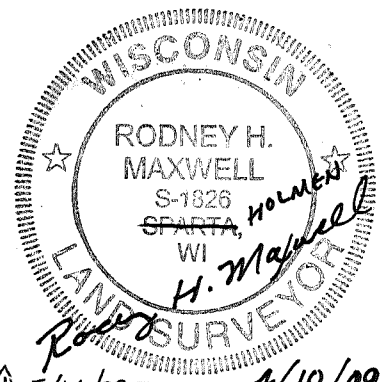
(C) IN THE PLAN VIEW DRAWING BELOW, PROVIDE REFERENCE TIES TO AT LEAST 4 WITNESS MONUMENTS OR, IF THE LOCATION IS WITHIN A MUNICIPALITY, TO AT LEAST 2 WITNESS MONUMENTS, (WITNESS MONUMENTS SHALL MEET STATE AND VERNON COUNTY REQUIREMENTS.)

(D) SHOW A PLAN VIEW DRAWING, DEPICTING THE RELEVANT MONUMENTS AND REFERENCE TIES, WHICH IS SUFFICIENTLY DETAILED TO ENABLE ACCURATE RELOCATION OF THE CORNER MONUMENT IF IT IS DISTURBED.



### MONUMENTS & TIES

- ① = Set Vernon County Monument
- ② = 3/4" x 18" I. Rod set N 34° 55' 37" W, 53.52'
- ③ = 3/4" x 18" I. Rod set S 85° 03' 35" E, 32.50'
- ④ = 3/4" x 18" I. Rod set S 35° 20' 55" W, 42.35'
- ⑤ = 3/4" x 18" I. Rod set N 72° 23' 08" W, 98.96'



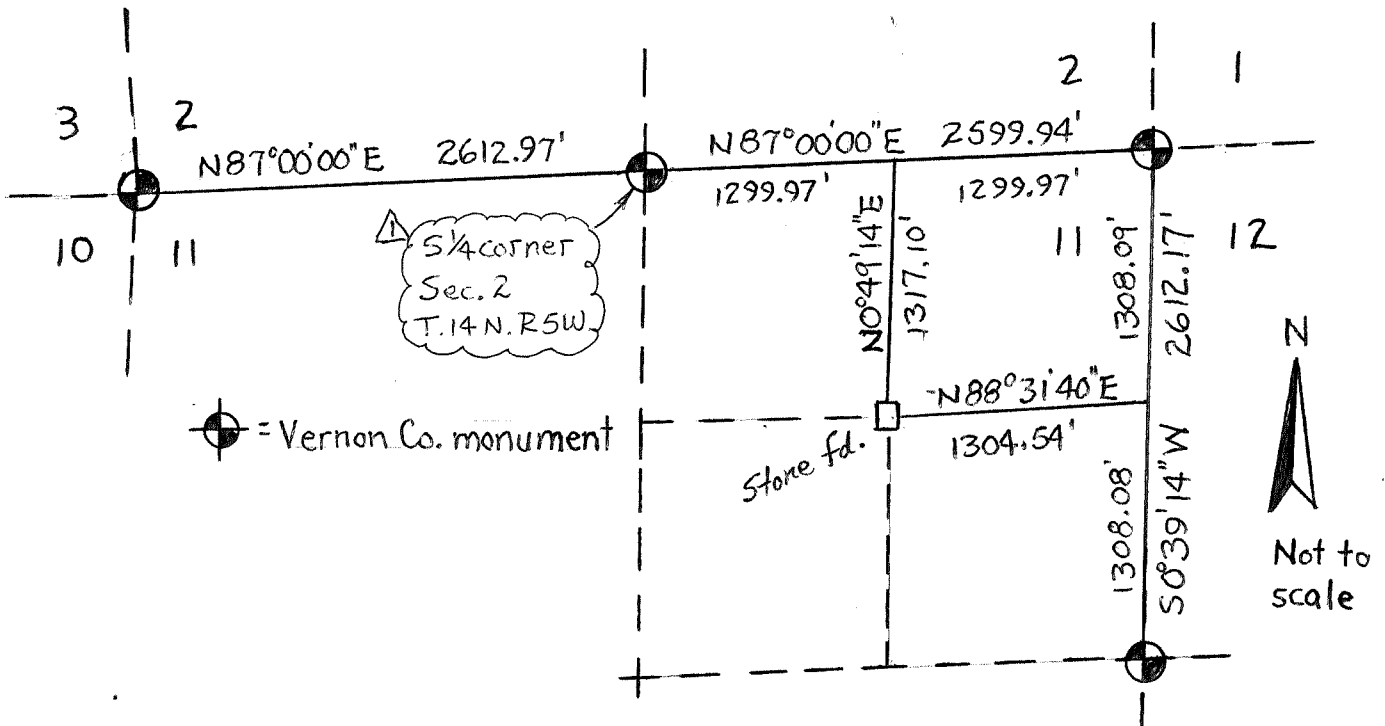
(E) DESCRIBE ANY MATERIAL DISCREPANCY BETWEEN THE LOCATION OF THE CORNER AS RESTORED OR REESTABLISHED AND THE LOCATION OF THAT CORNER AS PREVIOUSLY RESTORED OR REESTABLISHED BY DISTANCE AND DIRECTION. SHOW THE DISCREPANCY ON THE PLAN VIEW DRAWING UNDER (D) ABOVE. SHOW THE DISTANCES BETWEEN THE CORNER AS PREVIOUSLY RESTORED OR REESTABLISHED AND (1) THE CORNER AS RESTORED OR REESTABLISHED, AND (2) TO AT LEAST 2 OF THE WITNESS MONUMENTS AS SHOWN ON THE DRAWING IN (D), ABOVE.

N/A

(F) WAS THE CORNER RESTORED THROUGH THE ACCEPTANCE OF (1) AN OBLITERATED EVIDENCE LOCATION, OR (2) A FOUND PERPETUATED LOCATION?

1.

(G & H) WAS THE CORNER REESTABLISHED THROUGH LOST CORNER PROPORTIONATE METHOD? IF SO, SHOW THE METHOD, INCLUDING THE DIRECTION AND DISTANCE TO THE OTHER PUBLIC SURVEY CORNERS USED AS EVIDENCE OR USED FOR PROPORTIONING IN DETERMINING THE CORNER LOCATION.



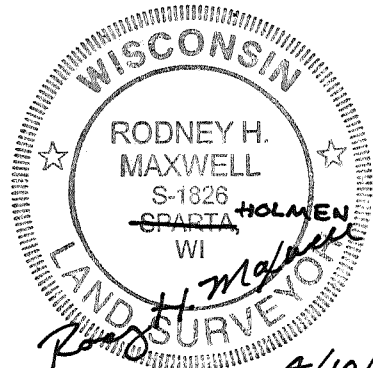
ADDITIONAL SURVEYOR COMMENTS:

I considered the conventional distance split but the ancient fence 1/4 & 1/2 mile North line up with this location. Knowers stone fd. @ center of NE 1/4 of Sec. 11 is shown above.

(I) I, RODNEY H. MAXWELL, REGISTERED LAND SURVEYOR, HEREBY CERTIFY THAT THE LOCATION SHOWN ON THIS RECORD WAS DETERMINED BY ME AND THAT THIS RECORD IS CORRECT AND COMPLETE TO THE BEST OF MY KNOWLEDGE AND BELIEF.

Rodney H. Maxwell  
 RODNEY H. MAXWELL WISCONSIN RLS, S-1826  
 623 AMY DR #13  
 HOLMEN, WI 54636

4/10/09  
 DATE



Rev. Δ 5/14/09 RHM

4/10/09

# VERNON COUNTY COORDINATE FORM

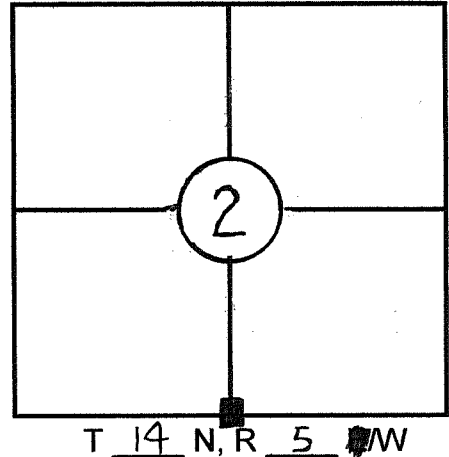
"As An Addendum To"

## A CERTIFIED U.S. PUBLIC LAND SURVEY MONUMENT RECORD

INSTRUCTIONS: THIS RECORD FORM SHOULD BE USED WHEN COORDINATES ARE PROVIDED FOR A PUBLIC LAND SURVEY CORNER AND SHALL INCLUDE ALL OF THE FOLLOWING ELEMENTS (A-D)

(A) IDENTIFY THE CORNER BY REFERENCE TO THE U.S. PUBLIC LAND SURVEY SYSTEM IN DIAGRAM AT RIGHT

■ = CORNER MONUMENT



(B) COORDINATES:

GEOGRAPHIC (Degrees Minutes Decimal Seconds to 4 places):

LATITUDE: 43° 42' 39.3930"

LONGITUDE: 90° 56' 40.7760"

ELLIPSOID HT (m): 23.979

HORIZONTAL DATUM: \_\_\_\_\_

ORTHOMETRIC HT (U.S. ft): \_\_\_\_\_

VERTICAL DATUM: NAD 1983(2007)

VERNON COUNTY (U.S. FEET)

NORTHING (Y): 205527.394

EASTING (X): 688574.383

Coord. Quality (+/-)

\_\_\_\_\_  
\_\_\_\_\_

METHOD USED TO COMPUTE COORDINATES (check and complete as applicable):

RTK Observations     Static Baselines     OPUS Solution (attach copy of OPUS report)

Combination of conventional procedures with GPS observations to set temporary control

Was a Least Squares Adjustment Used to Compute Coordinate? Yes  No

For Non-OPUS Based Solutions, List the Control Stations Used for Coordinate Computations (a minimum of 2 different control stations or 2 different time combinations from the same control station are required):

Obs. #	Control Station Name	Station Coordinates (Lat/Long)	Date	Time
2	N 204209.304 E 687338.056	N 43° 42' 26.353" W 90° 56' 40.776"		

\* Please List Additional Control Stations Used on Back of Form

When a direct observation of the corner is not possible, and a combination of different GPS and/or conventional procedures must be used to determine coordinate values, provide a brief description of your procedures on the back of form.

(C) REASON FOR COORDINATE SUBMITTAL (check one):

- Being Filed With a New U.S. PLS Monument Record  
 To Correct the Coordinates Listed on a Previously Filed PLS Monument Record  
 To Provide Coordinates for a Previously Filed PLS Monument Record without Coordinates  
 To Provide Supplemental Coordinates for a Previously Filed PLS Monument Record

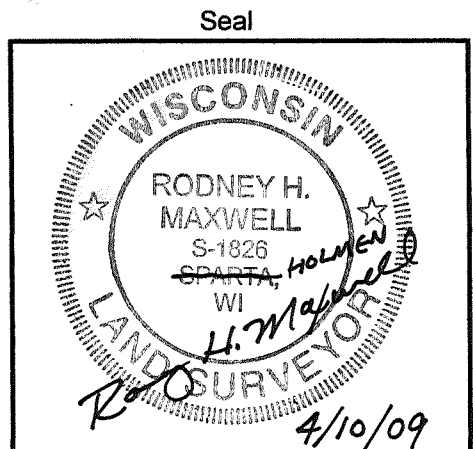
R.L.S. & DATE OF PLS MONUMENT RECORD: Rodney H. Maxwell 4/10/09

(D) AGENT(S) PERFORMING GPS OBSERVATIONS & COORDINATE COMPUTATION

- 1) Laurence E. Johns III
- 2) Rodney H. Maxwell

1. Rodney H. Maxwell  
 CERTIFY THAT THE COORDINATES PROVIDED ON THIS RECORD WERE DETERMINED BY ME OR UNDER MY DIRECTION AND CONTROL AND THAT THIS COORDINATE SUBMISSION FORM IS CORRECT AND COMPLETE TO THE BEST OF MY KNOWLEDGE AND BELIEF.

Rodney H. Maxwell                      4/10/09  
 SIGNATURE                                      DATE



Rev. Δ 5/14/09 RHM

\* Please Provide Any Additional Notes/Information on Back of Form