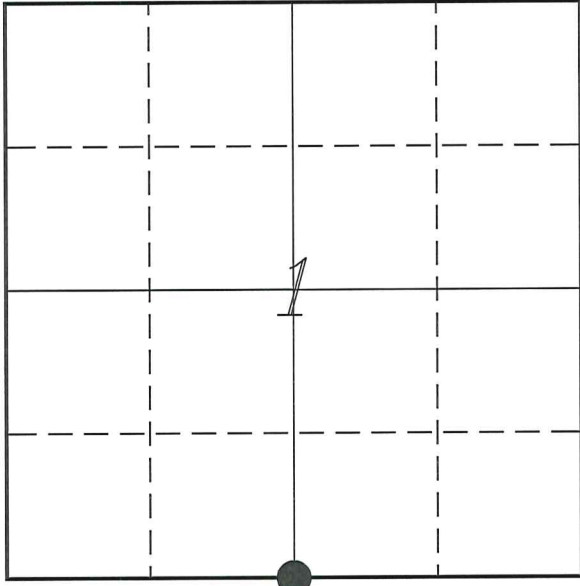


U. S. PUBLIC LAND SURVEY MONUMENT RECORD

SECTION 1, T14N, R5W, TOWN OF COON
VERNON COUNTY, WISCONSIN



LOCATION OF LANDMARK

VERNON COUNTY COORDINATE SYSTEM	
Northing	205625.673
Easting	693772.727
Datum	NAD 1983 (2011)
Elevation	
Datum	
TYPE OF LANDMARK: Existing Lunde Monument 4" Brass Capped Iron Pipe	
BEARINGS ARE REFERENCED TO: Vernon County Coordinates (Survey Grade)	

Witnesses: Laurence E Johns III

Date: 21 May 2020

Describe or show any material discrepancy between the location of the restored corner and that of the corner previously restored or re-established.

Alfred L Brown established this corner in October 1846.

Robert Lampman was at this corner, in August 1982, during a survey in Section 12. He shows he set an 1 1/4" iron pipe.

Robert Lampman was at this corner again, in January 1992, during a survey in Section 12. He shows he found an existing 1 1/4" iron pipe.

Jessica Zamor was at this corner, in April 1997, during a survey in Section 12. She shows she found an 1 1/4" iron pipe.

Curtis Cummer was at this corner, in September 2006, during a survey in Section 12. He shows he found Lampman's iron pipe and replaced it with a Lunde Monument. He prepared a tie sheet.

Curtis Cummer was at this corner again, in October 2006 & October 2017, during surveys in Section 12. He shows finding the Lunde monument.

Dallas Wilhite was at this corner, in October 2007, during a survey in Section 12. He shows he found a Vernon Co Survey Monument.

Describe any record evidence, monument evidence, testimonial evidence or any other material evidence you considered and whether the monument was found or restored through acceptance of an obliterated evidence location.

No bearing trees of record were located.

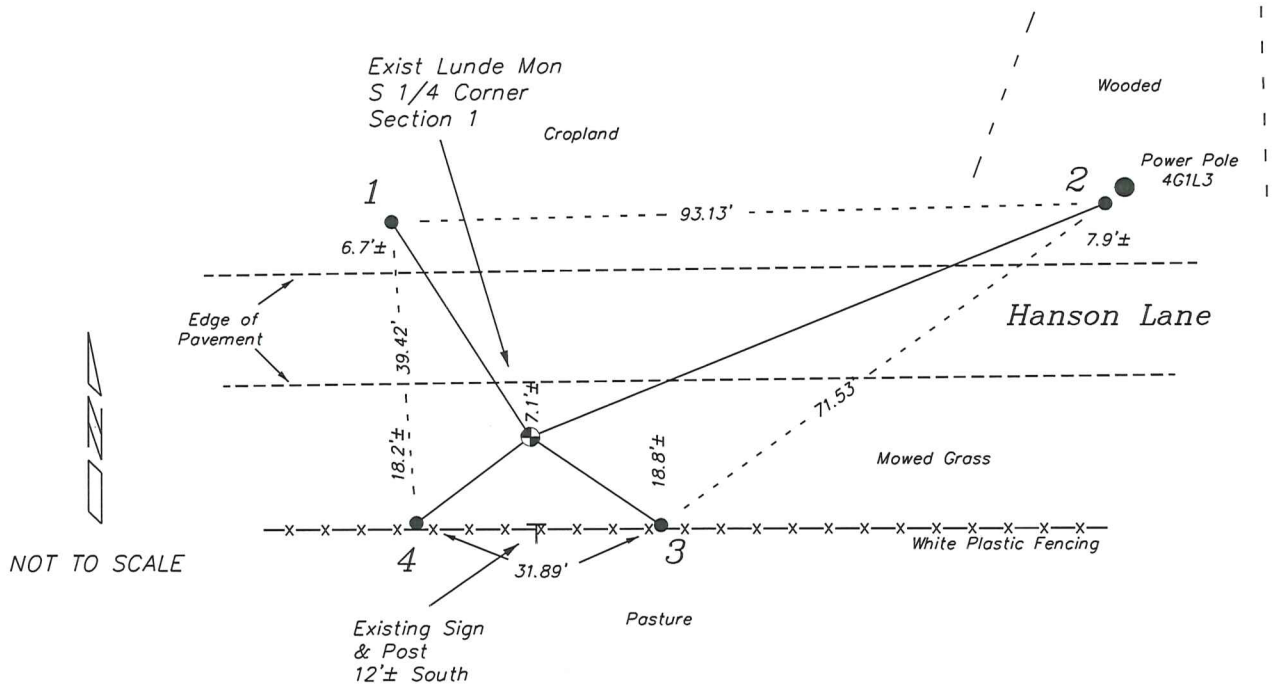
I found the Lunde Monument set by Cummer and all 4 of his ties.

This location fits as shown on Lampman's and Cummer's surveys.

I accepted the location of the monument as the best available evidence of the original government corner.

RECORD OF DURABLE WITNESS MONUMENTS

NO	DESCRIPTION	BEARING	DISTANCE
1	Existing 3/4" Iron Rod Edge of Crop Field	N 32°49'21" W (N 33° W)	33.43' (33.30')
2	Existing 3/4" Iron Rod 1.5' Southwest of Power Pole 4G1L3	N 67°58'30" E (N 62° E)	80.89' (81.00')
3	Existing 3/4" Iron Rod South Side of Pasture Fence	S 55°49'01" E (S 58° E)	20.53' (20.63')
4	Existing 3/4" Iron Rod South Side of Pasture Fence	S 53°03'36" W (S 55° W)	18.64' (18.70')



NOT TO SCALE

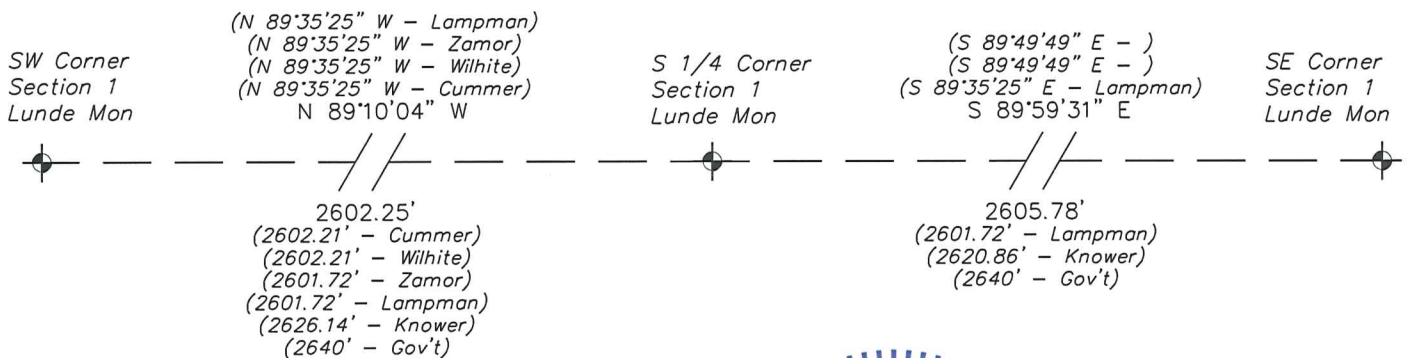
PLAN VIEW DRAWING OF REFERENCE TIES

Map Showing Distance And Direction To Other Public Land Survey Corners Used For Re-Establishing The Corner

Note:

Measurements were not made to other corners at this time.

Bearings and distances shown are based on recorded information and shown for reference.



I, Laurence E Johns III PLS 2804, Professional Land Surveyor, hereby certify that the corner location shown on this record was determined by me or under my direction and control, and that this U.S. Public Land Survey Monument Record is correct and complete to the best of my knowledge and belief.



RECEIVED
 OCT 12 2006
 BY: KS

Vernon County Certified U.S. Public Land Survey Monument Record

INSTRUCTIONS: THIS RECORD SHALL SHOW THE LOCATION OF THE CORNER AND SHALL INCLUDE ALL OF THE FOLLOWING ELEMENTS (A-I)

(A) IDENTIFY THE CORNER BY REFERENCE TO THE U.S. PUBLIC LAND SURVEY SYSTEM

■ = CORNER MONUMENT RESTORED

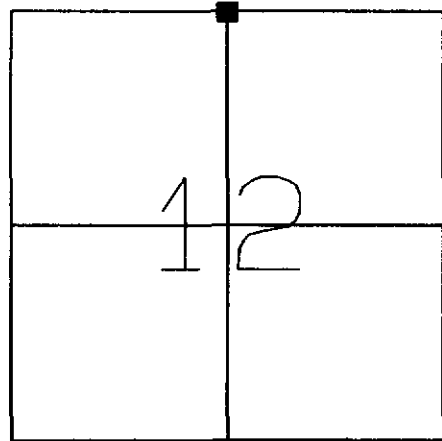
WITNESSES TO CORNER LOCATION:

- 1) Chad L. Crook
- 2) Brenda A. Crook
- 3)

STATE PLANE COORDINATES (WISCONSIN SOUTH ZONE)

NORTHING:
 EASTING:

VERNON COUNTY COORDINATES
 NORTHING: 202,625.61
 EASTING: 693,772.46



SECTION 12 TOWNSHIP 14 NORTH, RANGE 5 WEST
 TOWN OF COON

(B) DESCRIBE ANY RECORD EVIDENCE, MONUMENT EVIDENCE, OCCUPATIONAL EVIDENCE, TESTIMONIAL EVIDENCE OR ANY OTHER MATERIAL EVIDENCE YOU CONSIDERED, AND WHETHER THE MONUMENT WAS FOUND OR PLACED.

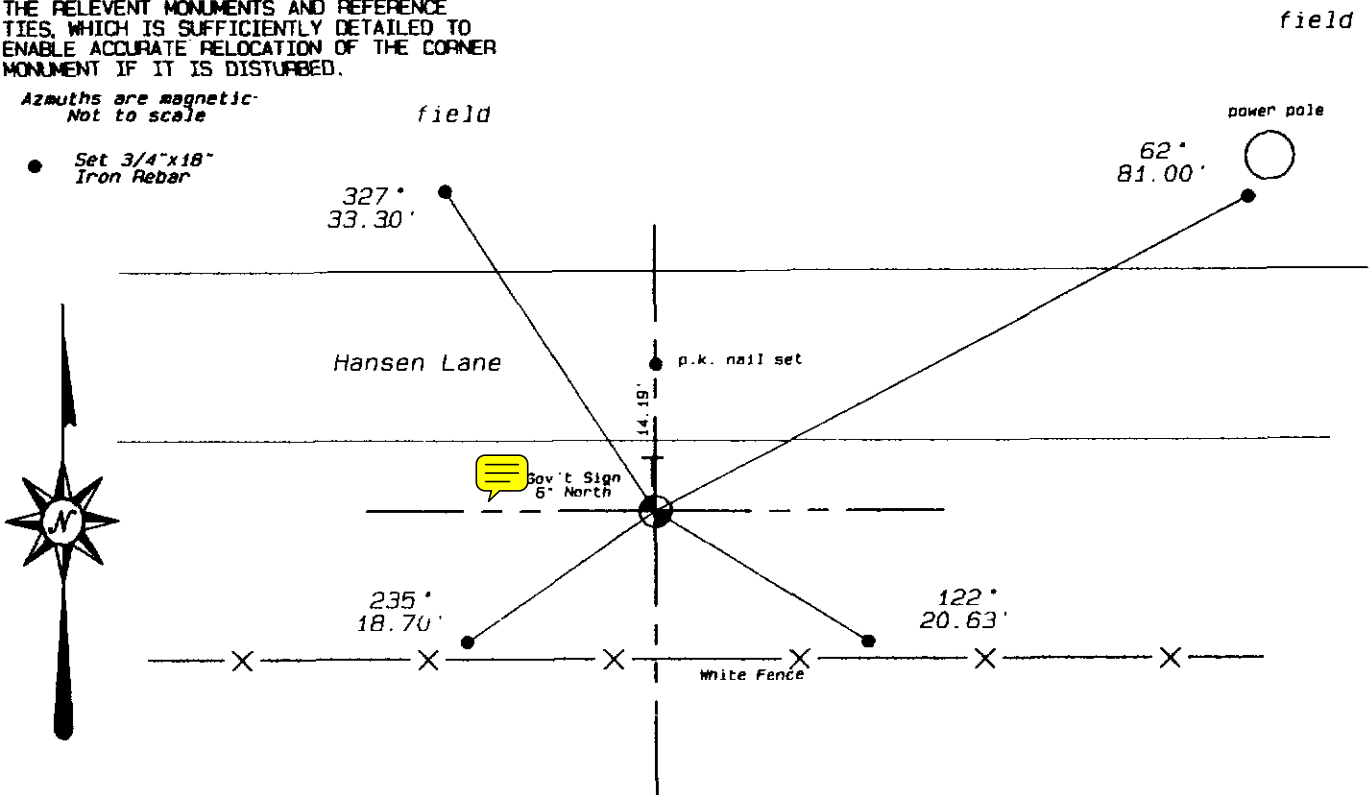
Replaced found Iron Pipe as called out in survey done by Robert Lampan in 1982 with a Vernon County Monument.

(C) IN THE PLAN VIEW DRAWING BELOW, PROVIDE REFERENCE TIES TO AT LEAST 4 WITNESS MONUMENTS OR, IF THE LOCATION IS WITHIN A MUNICIPALITY, TO AT LEAST 2 WITNESS MONUMENTS. (WITNESS MONUMENTS SHALL BE MADE OF CONCRETE, NATURAL STONE, IRON, OR OTHER EQUALLY DURABLE MATERIAL.) DESCRIBE WITNESS MONUMENTS.

(D) SHOW A PLAN VIEW DRAWING, DEPICTING THE RELEVANT MONUMENTS AND REFERENCE TIES, WHICH IS SUFFICIENTLY DETAILED TO ENABLE ACCURATE RELOCATION OF THE CORNER MONUMENT IF IT IS DISTURBED.

Azimuths are magnetic
 Not to scale

- Set 3/4"x18" Iron Rebar



(E) DESCRIBE ANY MATERIAL DISCREPANCY BETWEEN THE LOCATION OF THE CORNER AS RESTORED OR REESTABLISHED AND THE LOCATION OF THAT CORNER AS PREVIOUSLY RESTORED OR REESTABLISHED BY DISTANCE AND DIRECTION. SHOW THE DISCREPANCY ON THE PLAN VIEW DRAWING UNDER (D), ABOVE. SHOW THE DISTANCES BETWEEN THE CORNER AS PREVIOUSLY RESTORED OR REESTABLISHED AND (1) THE CORNER AS RESTORED OR REESTABLISHED, AND (2) TO AT LEAST 2 OF THE WITNESS MONUMENTS AS SHOWN ON THE DRAWING IN (D), ABOVE.

(NA)

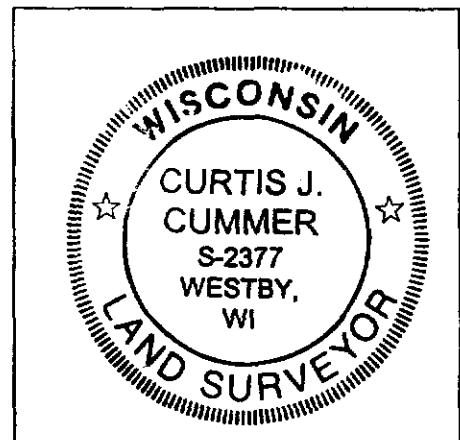
(F) WAS THE CORNER RESTORED THROUGH ACCEPTANCE OF (1) AN OBLITERATED EVIDENCE LOCATION, OR (2) A FOUND PERPETUATED LOCATION?

(2)

(G & H) WAS THE CORNER REESTABLISHED THROUGH LOST CORNER PROPORTIONATE METHODS? IF SO SHOW THE METHOD, INCLUDING THE DIRECTION AND DISTANCES TO THE OTHER PUBLIC LAND SURVEY CORNERS USED AS EVIDENCE OR USED FOR PROPORTIONING IN DETERMINING THE CORNER LOCATION.

(NA)

LAND SURVEYOR SEAL



(I) I, Curtis J. Cummer, CERTIFY THAT THE LOCATION SHOWN ON THIS RECORD WAS DETERMINED BY ME OR UNDER MY DIRECTION AND CONTROL AND THAT THIS U.S. PUBLIC LAND SURVEY MONUMENT RECORD IS CORRECT AND COMPLETE TO THE BEST OF MY KNOWLEDGE AND BELIEF.

SIGNATURE

DATE

10/12/06