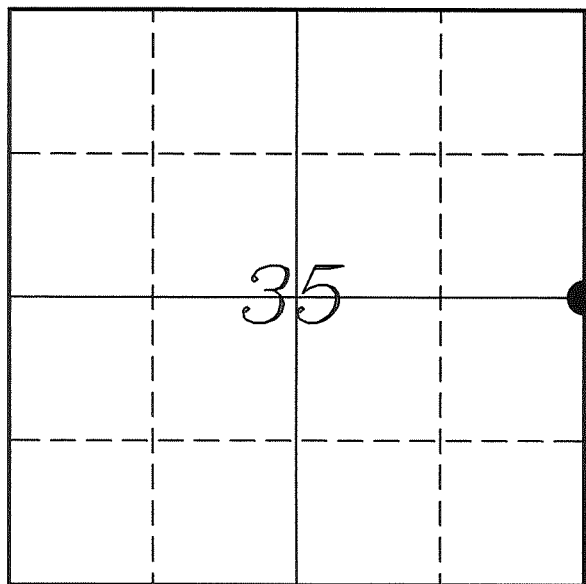

U. S. PUBLIC LAND SURVEY MONUMENT RECORD

SECTION 36, T14N, R2W, TOWN OF WHITESTOWN
VERNON COUNTY, WISCONSIN



LOCATION OF LANDMARK

Crew: Laurence E Johns III

Date: 8 July 2011

VERNON COUNTY COORDINATE SYSTEM	
Northing	181849.246
Easting	785912.175
Datum	NAD 1983 (2007)
Elevation	
Datum	
TYPE OF LANDMARK: Army Corps of Engineers (USCE) Monument	
BEARINGS ARE REFERENCED TO: Vernon County Coordinates	

Describe any record evidence, monument evidence, testimonial evidence or any other material evidence you considered and whether the monument was found or restored through acceptance of an obliterated evidence location.

No bearing trees of record were located.

I found the USCE Monument set by Van Dorpe in the remnants of a North/South fence.

Van Dorpe's measurement matches Knower's distance very well.

I accepted the USCE Monument as the best available evidence of the original government corner.

Describe or show any material discrepancy between the location of the restored corner and that of the corner previously restored or re-established.

Noah Phelps established this corner in October 1847.

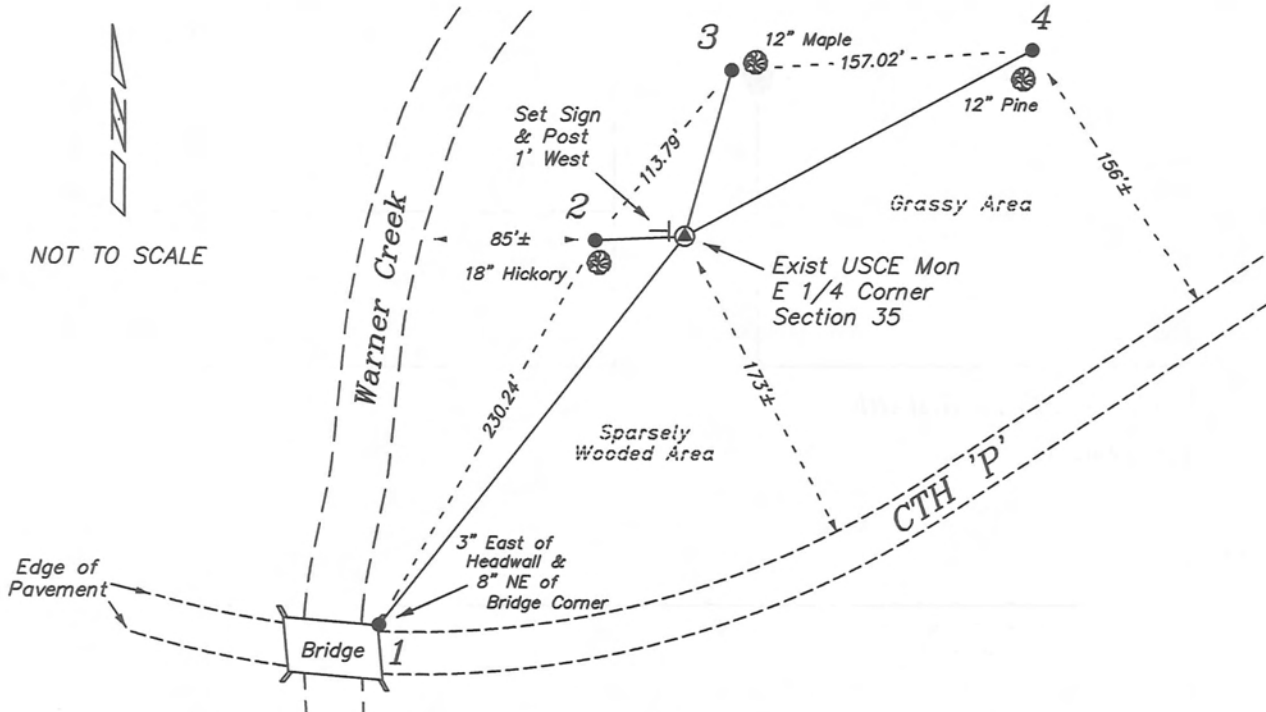
Wm Knower was at this corner, in May 1884, during a survey in Section 36. He shows that he found the government corner and renewed the tie.

Wm Knower was at this corner, in April 1895, during a survey in Section 35. He shows that he found the government corner from his earlier survey.

Ralph Van Dorpe was at this corner, in February 1966, during a survey for the US Army Corps of Engineers. He re-established this corner at the intersection of a North/South fence and a fence extended from the West. He placed a 2" Iron Pipe with a brass cap (USCE Monument) at this location.

RECORD OF DURABLE WITNESS MONUMENTS

NO	DESCRIPTION	BEARING	DISTANCE
1	Set 3/4" x 18" Iron Rod 8" NE of Corner of Bridge	S 38°02'44" W	257.95'
2	Set 3/4" x 18" Iron Rod 1' Northwest of 18" Hickory	S 87°16'26" W	46.59'
3	Set 3/4" x 18" Iron Rod 1' West of 12" Maple	N 15°37'05" E	90.18'
4	Set 3/4" x 18" Iron Rod 2' North of 12" Pine	N 61°34'05" E	205.71'

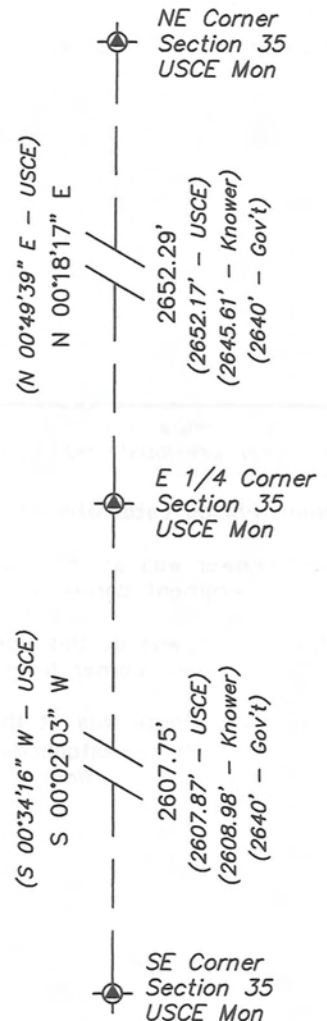


Map Showing Distance And Direction To Other Public Land Survey Corners Used For Re-Establishing The Corner



I, Laurence E Johns III RLS 2804, Registered Land Surveyor, hereby certify that the corner location shown on this record was determined by me or under my direction and control, and that this U.S. Public Land Survey Monument Record is correct and complete to the best of my knowledge and belief.

Laurence E Johns III RLS 2804
 Eagle Ridge Surveying, CCC
 PO Box 213
 Wilton, Wisconsin
 28 September 2011

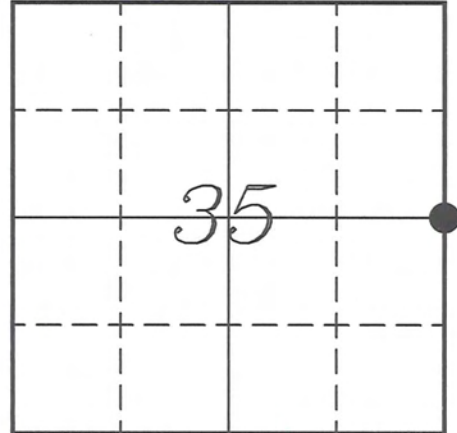


VERNON COUNTY COORDINATE SUBMISSION FORM
 "As An Addendum To"
VERNON COUNTY
CERTIFIED U.S. PUBLIC LAND SURVEY MONUMENT RECORD

INSTRUCTIONS: THIS RECORD FORM SHOULD BE USED WHEN COORDINATES ARE PROVIDED FOR A PUBLIC LAND SURVEY CORNER AND SHALL INCLUDE ALL OF THE FOLLOWING ELEMENTS (A-D)

(A) IDENTIFY THE CORNER BY REFERENCE TO THE U.S. PUBLIC LAND SURVEY SYSTEM IN DIAGRAM AT RIGHT

● = CORNER MONUMENT



T 14 N, R 2 W

(B) COORDINATES:

GEOGRAPHIC (Degrees Minutes Seconds)

LATITUDE: 43° 38' 45.2421" N

LONGITUDE: 90° 34' 19.61722" W

ELLIPSOID HT (m): _____

DATUM: NAD 1983 (2007)

GEOID03 ADJ: -33.719

ORTHOMETRIC HT: _____

VERNON COUNTY (U.S. FEET)

Coord Quality (+/-)

NORTHING (Y): 181849.246 _____

EASTING (X): 785912.175 _____

GPS METHOD USED TO COMPUTE COORDINATES (check as applicable)

RTK Observations Static Baselines OPUS-RS Solution OPUS-S Solution

Combination of GPS Observations & Conventional Procedures

Single Angle Measurement Closed Traverse Loop

Was a Least Squares Adjustment Used to Compute Coordinates? Yes / No

BASE CONTROL USED FOR COORDINATE COMPUTATION

Station Name	Station Coordinates	Date/Time
<u>OPUS Measurement</u>	_____	<u>07/08/2011 - 12:55</u>
<u>OPUS Station - TS 9004</u>	<u>43° 38' 42.3845" N 90° 33' 39.3430" W</u> <u>N - 181567.610 E - 788874.373</u>	<u>09/28/2011 - 12:54</u>

(C) REASON FOR COORDINATES SUBMITTAL (check one)

- Being Filed With a New U.S. PLS Monument Record
 To Correct the Coordinates Listed on a Previously Filed PLS Monument Record
 To Provide Coordinates for Previously Filed PLS Monument Record without Coordinates
 To Provide Supplemental Coordinates for a Previously Filed PLS Monument Record

MOST RECENT PLS MONUMENT RECORD DATE:

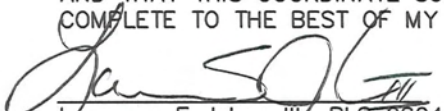
R.L.S. WHO CREATED MOST RECENT PLS MONUMENT RECORD:

(D) AGENT(S) PERFORMING GPS OBSERVATIONS & COORDINATE COMPUTATION

1) LAURENCE E JOHNS III

2) _____

I, LAURENCE E JOHNS III RLS 2804, REGISTERED LAND SURVEYOR, HEREBY CERTIFY THAT THE COORDINATES PROVIDED ON THIS RECORD WERE DETERMINED BY ME OR UNDER MY DIRECTION AND CONTROL AND THAT THIS COORDINATE SUBMISSION FORM IS CORRECT AND COMPLETE TO THE BEST OF MY KNOWLEDGE AND BELIEF.


 Laurence E Johns III, RLS 2804
 Eagle Ridge Surveying, LLC
 PO Box 213
 Wilton, Wisconsin
 28 September 2011

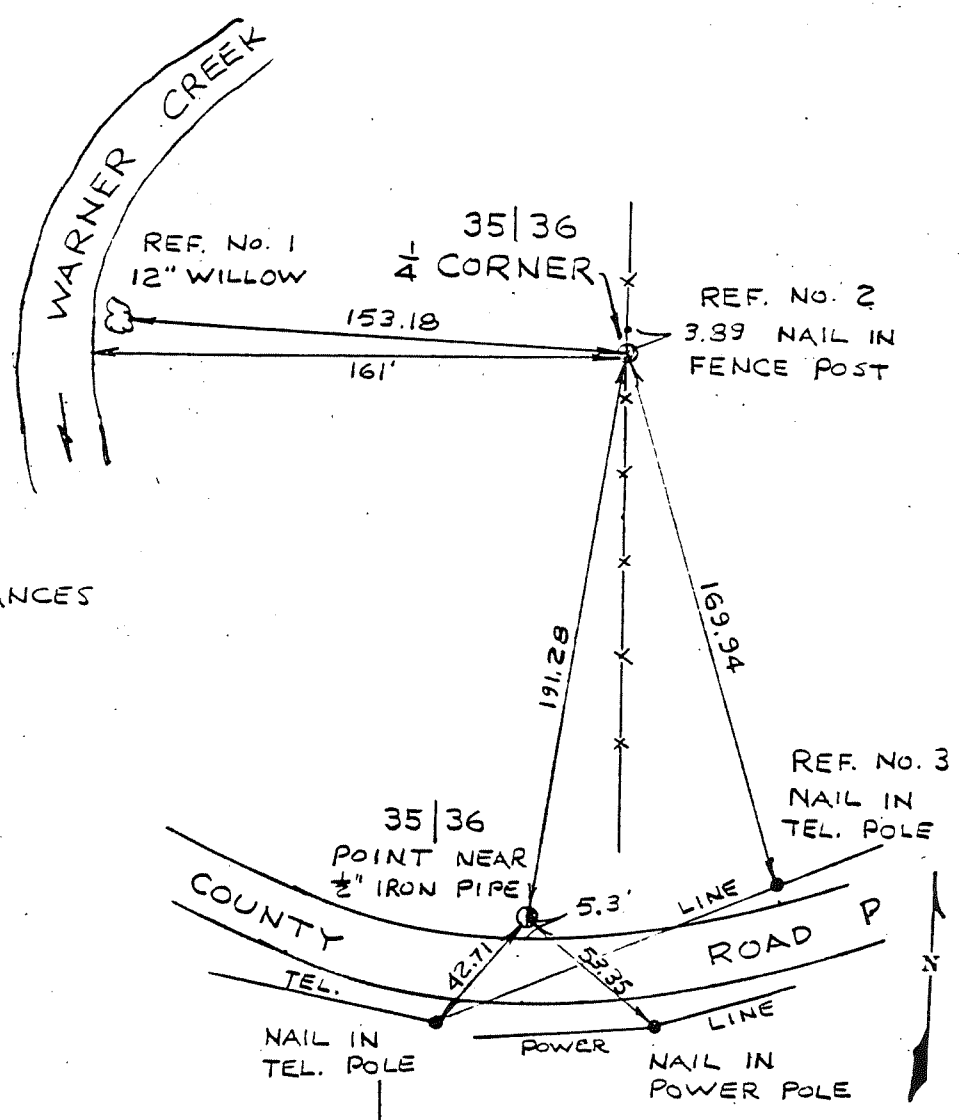


COUNTRY U. S. A.	TYPE OF MARK 2" IRON PIPE WITH BRASS CAP	STATION ¼ CORNER 35 36	T. 14 N. R. 2 W.
LOCALITY LA FARGE, WIS	STAMPING ON MARK 35 36	AGENCY (CAST IN MARKS) CORPS OF ENGRS.	ELEVATION (FT) (M)
LATITUDE	LONGITUDE	DATUM	DATUM
(NORTHING)(EASTING) (FT) 600,405.43	(EASTING)(NORTHING) (FT) 1,848,598.02	GRID AND ZONE WIS. (SOUTH)	ESTABLISHED BY (AGENCY) CHICAGO DISTRICT
(NORTHING)(EASTING) (FT) (M)	(EASTING)(NORTHING) (FT) (M)	GRID AND ZONE	DATE 1965

TO OBTAIN GRID AZIMUTH, ADD TO THE GEODETIC AZIMUTH
 TO OBTAIN GRID AZ. (ADD)(SUB.) TO THE GEODETIC AZIMUTH

OBJECT	AZIMUTH OR DIRECTION (GEODETIC)(GRID) (MAGNETIC)	BACK AZIMUTH	GEOD. DISTANCE (METERS) (FEET)	GRID DISTANCE (METERS) (FEET)
POINT NEAR 35 36	S. 08°-49'-05" W.			191.28
REF. No. 1	N. 85°-42'-15" W.			153.18
REF. No. 2	N. 12°-26'-25" E.			3.89
REF. No. 3	S. 15°-47'-35" E.			169.94

REFERENCE DISTANCES
ARE HORIZONTAL



SKETCH