

**VERNON COUNTY
CERTIFIED U.S. PUBLIC LAND SURVEY MONUMENT RECORD**

INSTRUCTIONS: THIS RECORD SHALL SHOW THE LOCATION OF THE CORNER AND SHALL INCLUDE ALL OF THE FOLLOWING ELEMENTS (A-I)

(A) IDENTIFY THE CORNER BY REFERENCE TO THE U.S. PUBLIC LAND SURVEY SYSTEM

■ = CORNER MONUMENT RESTORED

WITNESSES TO CORNER LOCATION:

- 1) Robert M. Lampman
- 2) Jessica A. Sandry
- 3) Chad L. Crook

GEOGRAPHIC COORDINATES - WGS84/GRS80 - NAD83(2007)

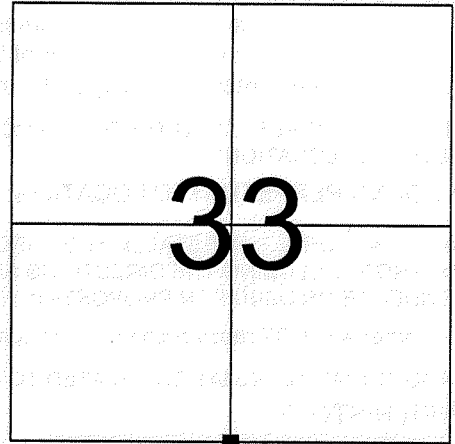
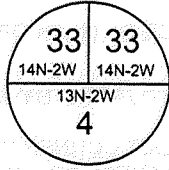
Lat: 43°38'19.3231" N

Lon: 90°37'18.0728" W

VERNON COUNTY COORDINATES - WISCRS - NAD83(2007) - SURVEY FEET

NORTHING: 179195.28'

EASTING: 772795.17'



SECTION 33

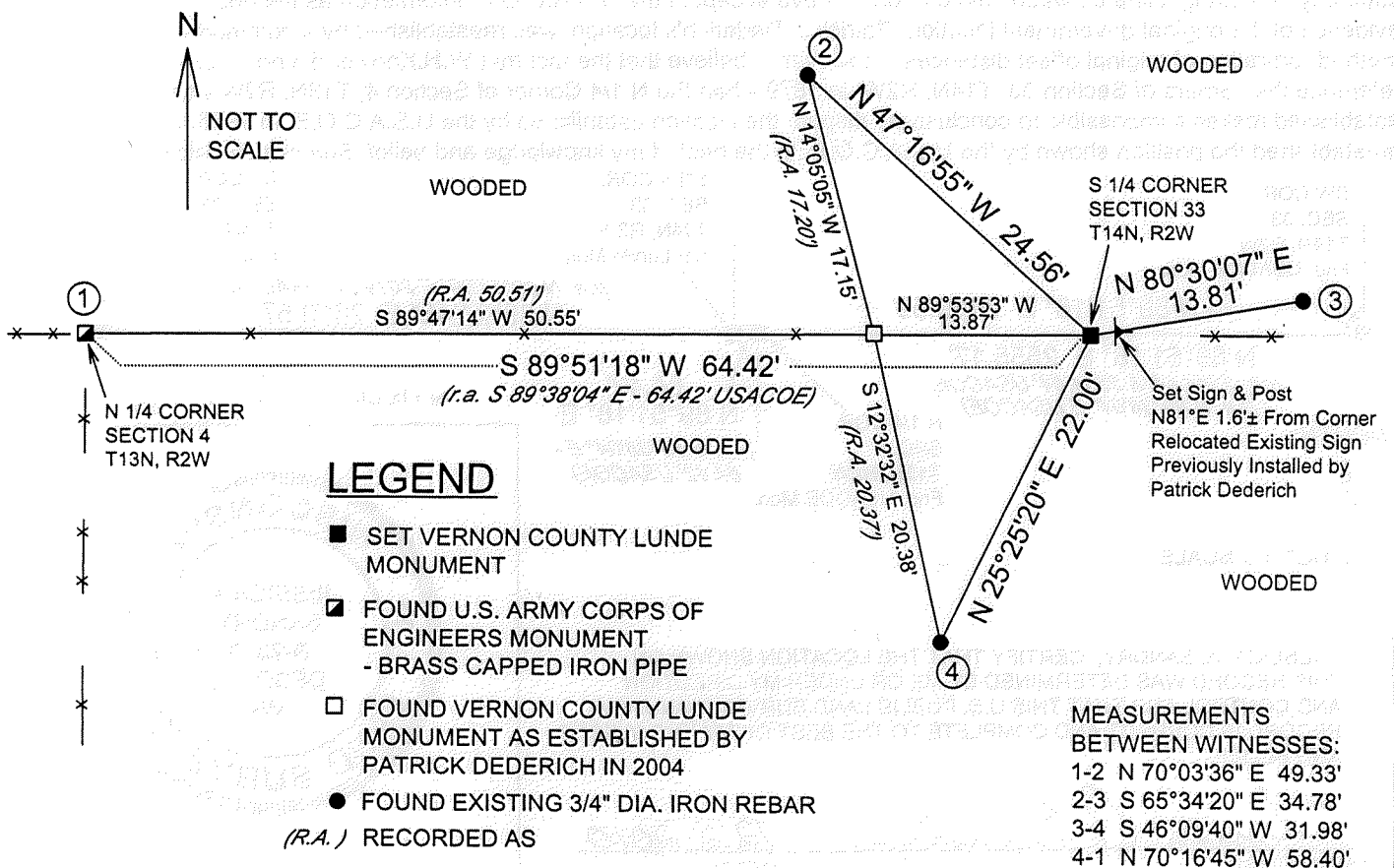
TOWN 14 NORTH, RANGE 2 WEST

(B) DESCRIBE ANY RECORD EVIDENCE, MONUMENT EVIDENCE, OCCUPATIONAL EVIDENCE, TESTIMONIAL EVIDENCE OR ANY OTHER MATERIAL EVIDENCE YOU CONSIDERED, AND WHETHER THE MONUMENT WAS FOUND OR PLACED.

I have reestablished the location of this corner in accordance with U.S.A.C.O.E. drawings from the Kickapoo River Reservoir project. The U.S.A.C.O.E prepared a section data sheet for Section 4, T13N, R2W. Said data sheet also depicts corners reestablished along the South line of Section 33, T14N, R2W. There is a minor typographical error on said data sheet. The distance between the SW Corner of said Section 33 and the N1/4 Corner of said Section 4 is recorded as "2544.84". As per the coordinates and other information displayed on the drawing said distance should read "2554.84". With this typographical error noted the methods used by the U.S.A.C.O.E to establish the corners in this area become quite evident. The N1/4 Corner of said Section 4 was established through acceptance of occupational evidence. The S1/4 Corner of Section 33 was established in line with east/west occupation in the corner area and at equal distances from the SE and SW corners of Section 33. Said equal distances being 2619.27 feet each as per the data on the drawing. The position in east/west occupation being 9.44 feet southerly of a straight line between the SW and SE corners of Section 33 as per the data on the drawing. (CONTINUED ON REVERSE)

(C) IN THE PLAN VIEW DRAWING BELOW, PROVIDE REFERENCE TIES TO AT LEAST 4 WITNESS MONUMENTS OR, IF THE LOCATION IS WITHIN A MUNICIPALITY, TO AT LEAST 2 WITNESS MONUMENTS. (WITNESS MONUMENTS SHALL BE MADE OF CONCRETE, NATURAL STONE, IRON, OR OTHER EQUALLY DURABLE MATERIAL.) DESCRIBE WITNESS MONUMENTS.

(D) SHOW A PLAN VIEW DRAWING, DEPICTING THE RELEVANT MONUMENTS AND REFERENCE TIES, WHICH IS SUFFICIENTLY DETAILED TO ENABLE ACCURATE RELOCATION OF THE CORNER MONUMENT IF IT IS DISTURBED.



(E) DESCRIBE ANY MATERIAL DISCREPANCY BETWEEN THE LOCATION OF THE CORNER AS RESTORED OR REESTABLISHED AND THE LOCATION OF THAT CORNER AS PREVIOUSLY RESTORED OR REESTABLISHED BY DISTANCE AND DIRECTION. SHOW THE DISCREPANCY ON THE PLAN VIEW DRAWING UNDER (D), ABOVE. SHOW THE DISTANCES BETWEEN THE CORNER AS PREVIOUSLY RESTORED OR REESTABLISHED AND (1) THE CORNER AS RESTORED OR REESTABLISHED, AND (2) TO AT LEAST 2 OF THE WITNESS MONUMENTS AS SHOWN ON THE DRAWING IN (D), ABOVE.

The section corner location shown hereon is in disagreement with a location established by Patrick J. Dederich in September of 2004. Patrick Dederich set a Lunde monument at a prorated government offset distance measured from an existing U.S.A.C.O.E. monument at the N 1/4 corner of Section 4, T13N, R2W. The relative position of Patrick Dederich's monument is clearly shown in the sketch under (D) on the reverse.

(F) WAS THE CORNER RESTORED THROUGH ACCEPTANCE OF (1) AN OBLITERATED EVIDENCE LOCATION, OR (2) A FOUND PERPETUATED LOCATION?

(2) A FOUND PERPETUATED LOCATION, PERPETUATED BY MAPS AND MONUMENTS OF THE U.S.A.C.O.E.

(G & H) WAS THE CORNER REESTABLISHED THROUGH LOST CORNER PROPORTIONATE METHODS? IF SO SHOW THE METHOD, INCLUDING THE DIRECTIONS AND DISTANCES TO OTHER PUBLIC LAND SURVEY CORNERS USED AS EVIDENCE OR USED FOR PROPORTIONING IN DETERMINING THE CORNER LOCATION.

No, this corner was NOT reestablished by lost corner proportionate methods.

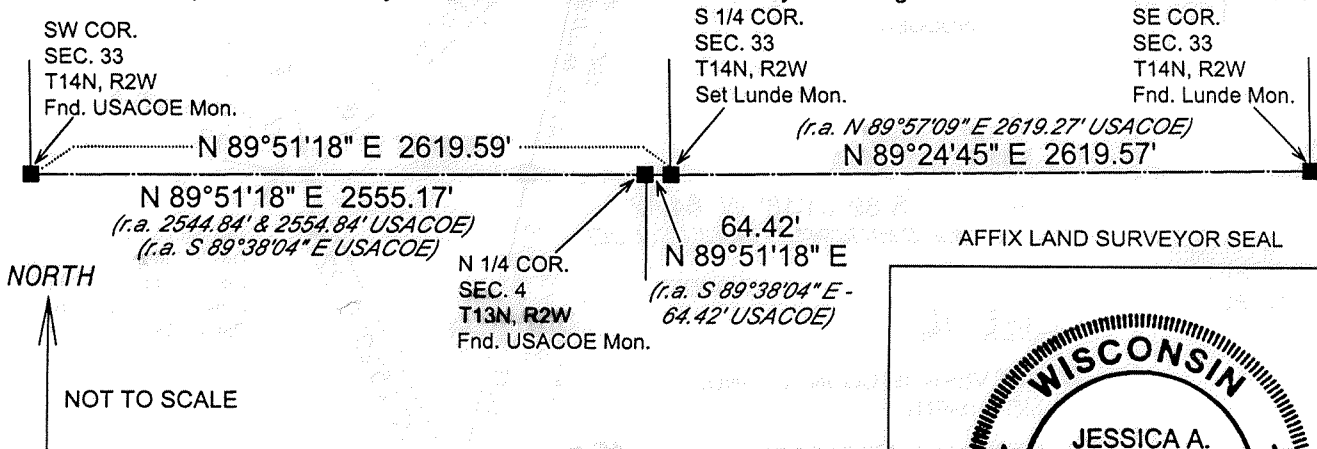
(**) ANY ADDITIONAL INFORMATION RELATED TO CORNER LOCATION

CORNER HISTORY:

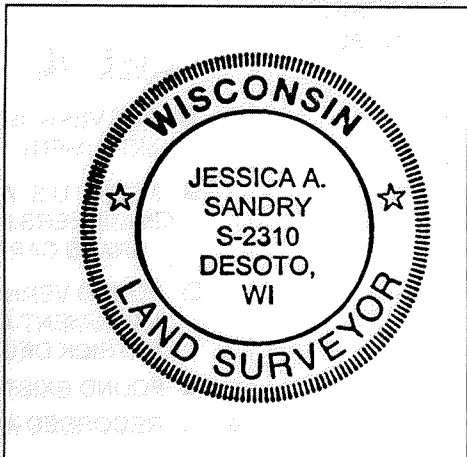
- Original Government corner established by J.E.Whitcher in April of 1845.
- W.H.Knower establishes the N1/4 Corner of Section 4, T13N, R2W as part of a survey in Sections 3 and 4, T13N, R2W dated 3/1/1879 to 3/4/1879 and recorded in Vol. 1 of Resurveys, Page 110. No. 132. Said corner is shown at equal distances from the NE and NW Corners of Section 4. On this survey, which to the best of my knowledge represents the original establishment of said N 1/4 Corner, there are no dimensions given relating the position of said N1/4 Corner of Section 4 to the corners along the south line of Section 33, T14N, R2W.
- W.H.Knower renewed the N1/4 Corner of Section 4, T13N, R2W in 1888 and again in 1892 as per Vol. 1 of Resurveys, Page 329, No. 438. A prorated government offset distance is written between said N1/4 Corner of Section 4 and the S1/4 Corner of Section 33, T14N, R2W. However, no other details are given pertaining to the S1/4 corner of Section 33.
- W.H.Knower utilized the S1/4 corner of Section 33, T14N, R2W in a subdivision of said Section 33 dated 12/30/1891-1/06/1892. The corner is noted as existing "Gov". Vol. 1 of Resurveys, Page 392, No. 536
- Ralph J. Van Dorpe an Illinois Registered Land Surveyor with the U.S.A.C.O.E. set a 2" iron pipe with a brass cap at this corner as part of the Kickapoo River Reservoir project. Pipe is shown on a data sheet dated 2/23/1966.
- Patrick J. Dederich set a Lunde monument at this corner and prepared a tie sheet for the same dated 9/08/2004.

(B) CONTINUED FROM REVERSE

As per the methods utilized by the U.S.A.C.O.E. the S 1/4 corner of said Section 33, T14N, R2W was reestablished at a location 64.42 feet easterly of the N1/4 corner of said Section 4, T13N, R2W. The N1/4 corner of said Section 4 was located on line between the SW and S1/4 corners of said Section 33. I did not find the monument installed by the U.S.A.C.O.E. at the S1/4 corner of Section 33. I did find considerable rust in a cylindrical shape while digging to install this Lunde. I have reestablished the corner location shown hereon at the record distance of 64.42 feet from the N1/4 corner of Section 4 and on an extension of alignment between the SW corner of said Section 33 and the N1/4 corner of said Section 4. The corner location shown hereon is almost perfectly at equal distance from the SW and SE corners of said Section 33 and 10.12 feet southerly of a straight line between said corners. I have accepted the U.S.A.C.O.E. information as the best available evidence of the original government location. Patrick J. Dederich's location was reestablished by a commonly utilized method (proration of original offset distances). However, I believe that the fact that W.H.Knower did not in any way reference the corners of Section 33, T14N, R2W in 1879 when the N 1/4 Corner of Section 4, T13N, R2W was originally established makes it impossible to conclusively dispute the location established by the U.S.A.C.O.E. in 1966. I have reestablished the position shown by the U.S.A.C.O.E. to the best of my knowledge and belief. See sketch below for detail.



AFFIX LAND SURVEYOR SEAL



(I) I, JESSICA A. SANDRY, CERTIFY THAT THE LOCATION SHOWN ON THIS RECORD WAS DETERMINED BY ME OR UNDER MY DIRECTION AND CONTROL AND THAT THIS U.S. PUBLIC LAND SURVEY MONUMENT RECORD IS CORRECT AND COMPLETE TO THE BEST OF MY KNOWLEDGE AND BELIEF.

Jessica A. Sandry 12-2-2010
SIGNATURE DATE

RECEIVED

SEP 14 2004

BY: m.m

VERNON COUNTY CERTIFIED U.S. PUBLIC LAND SURVEY MONUMENT RECORD

INSTRUCTIONS: THIS RECORD SHALL SHOW THE LOCATION OF THE CORNER AND SHALL INCLUDE ALL OF THE FOLLOWING ELEMENTS (A-I)

(A) IDENTIFY THE CORNER BY REFERENCE TO THE U.S. PUBLIC LAND SURVEY SYSTEM

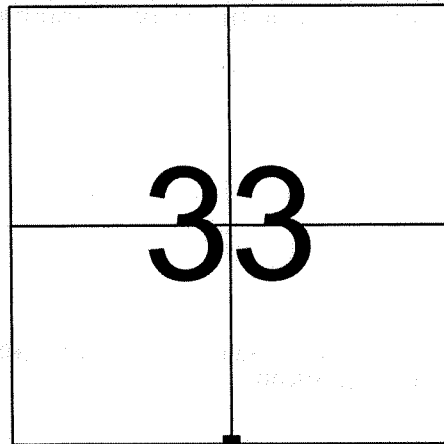
■ = CORNER MONUMENT RESTORED

WITNESSES TO CORNER LOCATION:

- 1) PATRICK J. DEDERICH
- 2) JOHN E. DEDERICH

VERNON COUNTY COORDINATES

NORTHING: 179,195.09
EASTING: 772,781.38



SECTION 33, TOWN 14 NORTH, RANGE 2 WEST

(B) DESCRIBE ANY RECORD EVIDENCE, MONUMENT EVIDENCE, OCCUPATIONAL EVIDENCE, TESTIMONIAL EVIDENCE OR ANY OTHER MATERIAL EVIDENCE YOU CONSIDERED, AND WHETHER THE MONUMENT WAS FOUND OR PLACED.

NO RECENT OR PHYSICAL EVIDENCE FOUND. SET LUNDE MONUMENT AT THE PRORATED CORRECTION DISTANCE FROM THE NORTH QUARTER CORNER OF SECTION 4, T.13 N. R.2 W. AND ON AN EXTENSION OF THE LINE FROM THE SOUTHWEST CORNER OF SECTION 33, T.14 N. R.2 W.

(C) IN THE PLAN VIEW DRAWING BELOW, PROVIDE REFERENCE TIES TO AT LEAST 4 WITNESS MONUMENTS OR, IF THE LOCATION IS WITHIN A MUNICIPALITY, TO AT LEAST 2 WITNESS MONUMENTS. (WITNESS MONUMENTS SHALL BE MADE OF CONCRETE, NATURAL STONE, IRON, OR OTHER EQUALLY DURABLE MATERIAL.) DESCRIBE WITNESS MONUMENTS.

(D) SHOW A PLAN VIEW DRAWING, DEPICTING THE RELEVANT MONUMENTS AND REFERENCE TIES, WHICH IS SUFFICIENTLY DETAILED TO ENABLE ACCURATE RELOCATION OF THE CORNER MONUMENT IF IT IS DISTURBED.

LEDGEND

- LUNDE MONUMENT SET
- ⊥ GOV'T SIGN SET
- 3/4" X 24" IRON ROD SET
- ARMY CORPS OF ENGINEERS MONUMENT FOUND

NOT TO SCALE

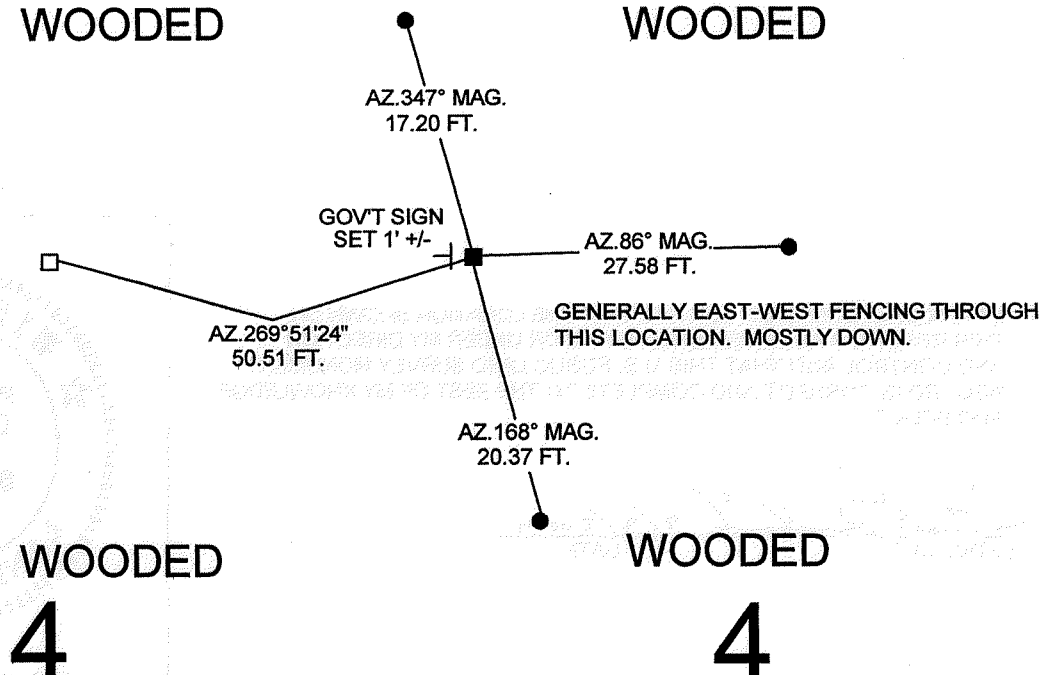


33

WOODED

33

WOODED



GENERALLY EAST-WEST FENCING THROUGH THIS LOCATION. MOSTLY DOWN.

BEARINGS ARE BASED ON THE VERNON COUNTY COORDINATE SYSTEM NAD 83/91

WOODED

4

WOODED

4

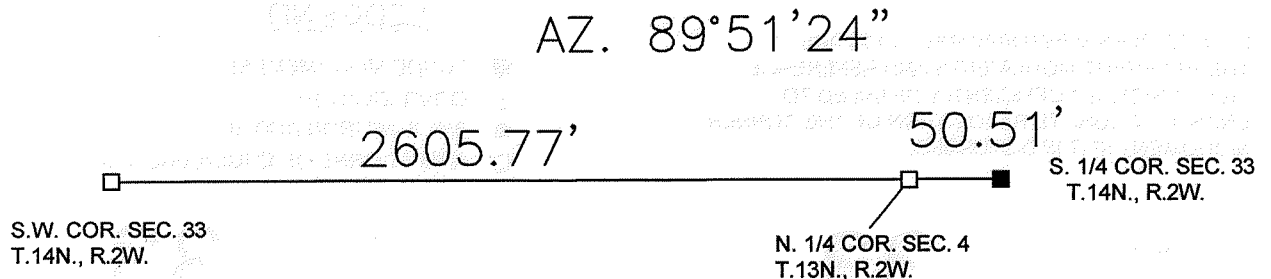
(E) DESCRIBE ANY MATERIAL DISCREPANCY BETWEEN THE LOCATION OF THE CORNER AS RESTORED OR REESTABLISHED AND THE LOCATION OF THAT CORNER AS PREVIOUSLY RESTORED OR REESTABLISHED BY DISTANCE AND DIRECTION. SHOW THE DISCREPANCY ON THE PLAN VIEW DRAWING UNDER (D), ABOVE. SHOW THE DISTANCES BETWEEN THE CORNER AS PREVIOUSLY RESTORED OR REESTABLISHED AND (1) THE CORNER AS RESTORED OR REESTABLISHED, AND (2) TO AT LEAST 2 OF THE WITNESS MONUMENTS AS SHOWN ON THE DRAWING IN (D), ABOVE.

(F) WAS THE CORNER RESTORED THROUGH ACCEPTANCE OF (1) AN OBLITERATED EVIDENCE LOCATION, OR (2) A FOUND PERPETUATED LOCATION?

(1) AN OBLITERATED EVIDENCE LOCATION.

(G & H) WAS THE CORNER REESTABLISHED THROUGH LOST CORNER PROPORTIONATE METHODS? IF SO SHOW THE METHOD, INCLUDING THE DIRECTIONS AND DISTANCES TO OTHER PUBLIC LAND SURVEY CORNERS USED AS EVIDENCE OR USED FOR PROPORTIONING IN DETERMINING THE CORNER LOCATION.

YES



AFFIX LAND SURVEYOR SEAL

(I) I, PATRICK J. DEDERICH CERTIFY THAT THE LOCATION SHOWN ON THIS RECORD WAS DETERMINED BY ME OR UNDER MY DIRECTION AND CONTROL AND THAT THIS U.S. PUBLIC LAND SURVEY MONUMENT RECORD IS CORRECT AND COMPLETE TO THE BEST OF MY KNOWLEDGE AND BELIEF.

Patrick J. Dederich 2/8/2004
SIGNATURE DATE

