

RECEIVED
 FEB 12 2004
 BY: *G. Jacobson*

VERNON COUNTY
 CERTIFIED U.S. PUBLIC LAND SURVEY MONUMENT RECORD

INSTRUCTIONS: THIS RECORD SHALL SHOW THE LOCATION OF THE CORNER AND SHALL INCLUDE ALL OF THE FOLLOWING ELEMENTS (A-I)

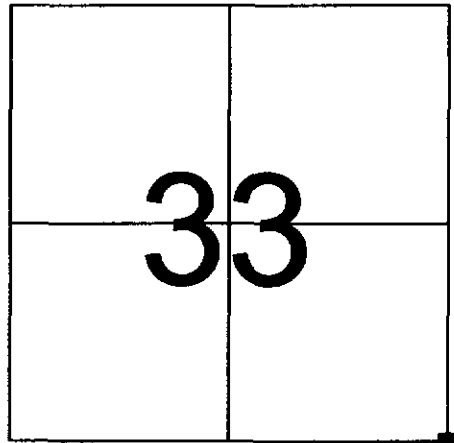
(A) IDENTIFY THE CORNER BY REFERENCE TO THE U.S. PUBLIC LAND SURVEY SYSTEM

■ = CORNER MONUMENT RESTORED

WITNESSES TO CORNER LOCATION:

- 1) PATRICK J. DEDERICH
- 2) JOHN E. DEDERICH

VERNON COUNTY COORDINATES
 NORTHING: 179,221.95
 EASTING: 775,414.64



SECTION 33, TOWN 14 NORTH, RANGE 2 WEST

(B) DESCRIBE ANY RECORD EVIDENCE, MONUMENT EVIDENCE, OCCUPATIONAL EVIDENCE, TESTIMONIAL EVIDENCE OR ANY OTHER MATERIAL EVIDENCE YOU CONSIDERED, AND WHETHER THE MONUMENT WAS FOUND OR PLACED.

FOUND 1-1/2" IRON PIPE WITH ARMY CORPS OF ENGINEERS CAP AT THE NORTH EAST CORNER OF SECTION 4 IN T.13N. R.2W. AND 1/2" X 18" IRON ROD AT THE SOUTH EAST CORNER OF SECTION 33 IN T.14 N. R.2W. FIT WELL WITH ADJACENT CORNERS. REPLACED IRON ROD WITH LUNDE MONUMENT.

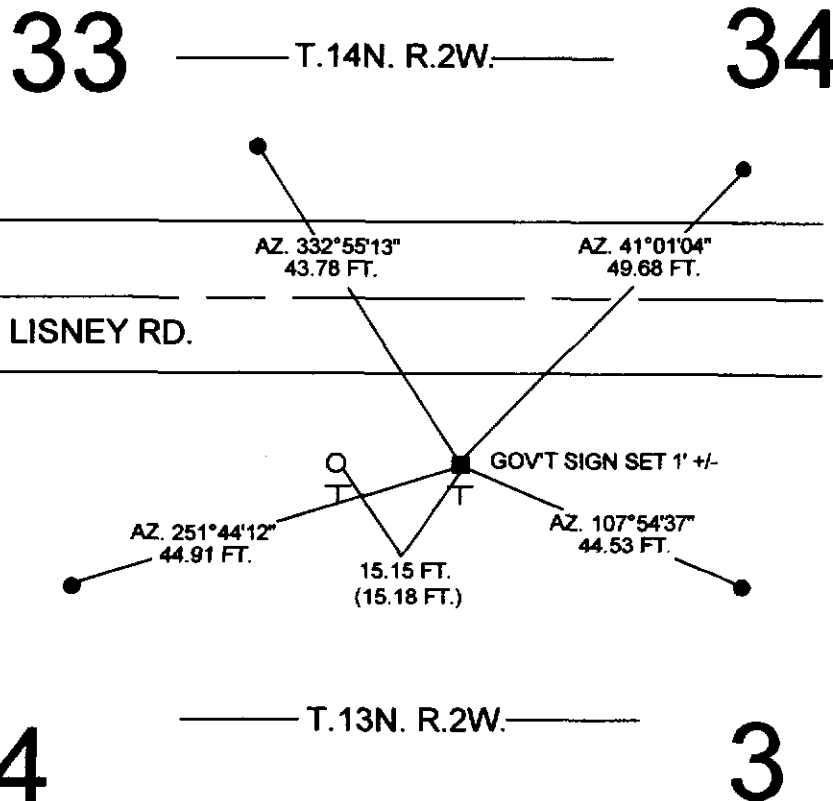
(C) IN THE PLAN VIEW DRAWING BELOW, PROVIDE REFERENCE TIES TO AT LEAST 4 WITNESS MONUMENTS OR, IF THE LOCATION IS WITHIN A MUNICIPALITY, TO AT LEAST 2 WITNESS MONUMENTS. (WITNESS MONUMENTS SHALL BE MADE OF CONCRETE, NATURAL STONE, IRON, OR OTHER EQUALLY DURABLE MATERIAL.) DESCRIBE WITNESS MONUMENTS.

(D) SHOW A PLAN VIEW DRAWING, DEPICTING THE RELEVANT MONUMENTS AND REFERENCE TIES, WHICH IS SUFFICIENTLY DETAILED TO ENABLE ACCURATE RELOCATION OF THE CORNER MONUMENT IF IT IS DISTURBED.

LEGEND

- 3/4" X 24" IRON ROD SET
- ⊥ GOVT SIGN SET
- LUNDE MONUMENT SET
- ARMY CORPS OF ENGINEERS MONUMENT FOUND

NOT TO SCALE



BEARINGS ARE BASED ON THE VERNON COUNTY COORDINATE SYSTEM NAD 83/91

(E) DESCRIBE ANY MATERIAL DISCREPANCY BETWEEN THE LOCATION OF THE CORNER AS RESTORED OR REESTABLISHED AND THE LOCATION OF THAT CORNER AS PREVIOUSLY RESTORED OR REESTABLISHED BY DISTANCE AND DIRECTION. SHOW THE DISCREPANCY ON THE PLAN VIEW DRAWING UNDER (D), ABOVE. SHOW THE DISTANCES BETWEEN THE CORNER AS PREVIOUSLY RESTORED OR REESTABLISHED AND (1) THE CORNER AS RESTORED OR REESTABLISHED, AND (2) TO AT LEAST 2 OF THE WITNESS MONUMENTS AS SHOWN ON THE DRAWING IN (D), ABOVE.

(F) WAS THE CORNER RESTORED THROUGH ACCEPTANCE OF (1) AN OBLITERATED EVIDENCE LOCATION, OR (2) A FOUND PERPETUATED LOCATION?


(2) A FOUND PERPETUATED LOCATION.

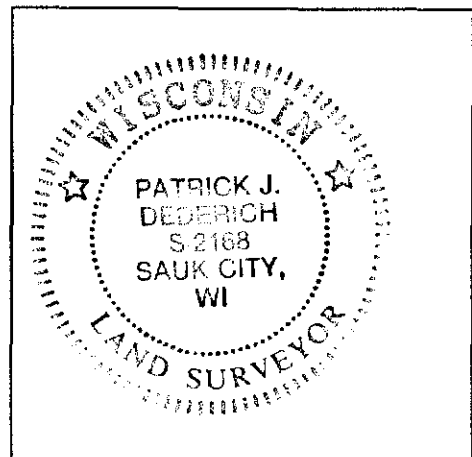
(G & H) WAS THE CORNER REESTABLISHED THROUGH LOST CORNER PROPORTIONATE METHODS? IF SO SHOW THE METHOD, INCLUDING THE DIRECTIONS AND DISTANCES TO OTHER PUBLIC LAND SURVEY CORNERS USED AS EVIDENCE OR USED FOR PROPORTIONING IN DETERMINING THE CORNER LOCATION.

NO.

AFFIX LAND SURVEYOR SEAL

(I) I, PATRICK J. DEDERICH CERTIFY THAT THE LOCATION SHOWN ON THIS RECORD WAS DETERMINED BY ME OR UNDER MY DIRECTION AND CONTROL AND THAT THIS U.S. PUBLIC LAND SURVEY MONUMENT RECORD IS CORRECT AND COMPLETE TO THE BEST OF MY KNOWLEDGE AND BELIEF.

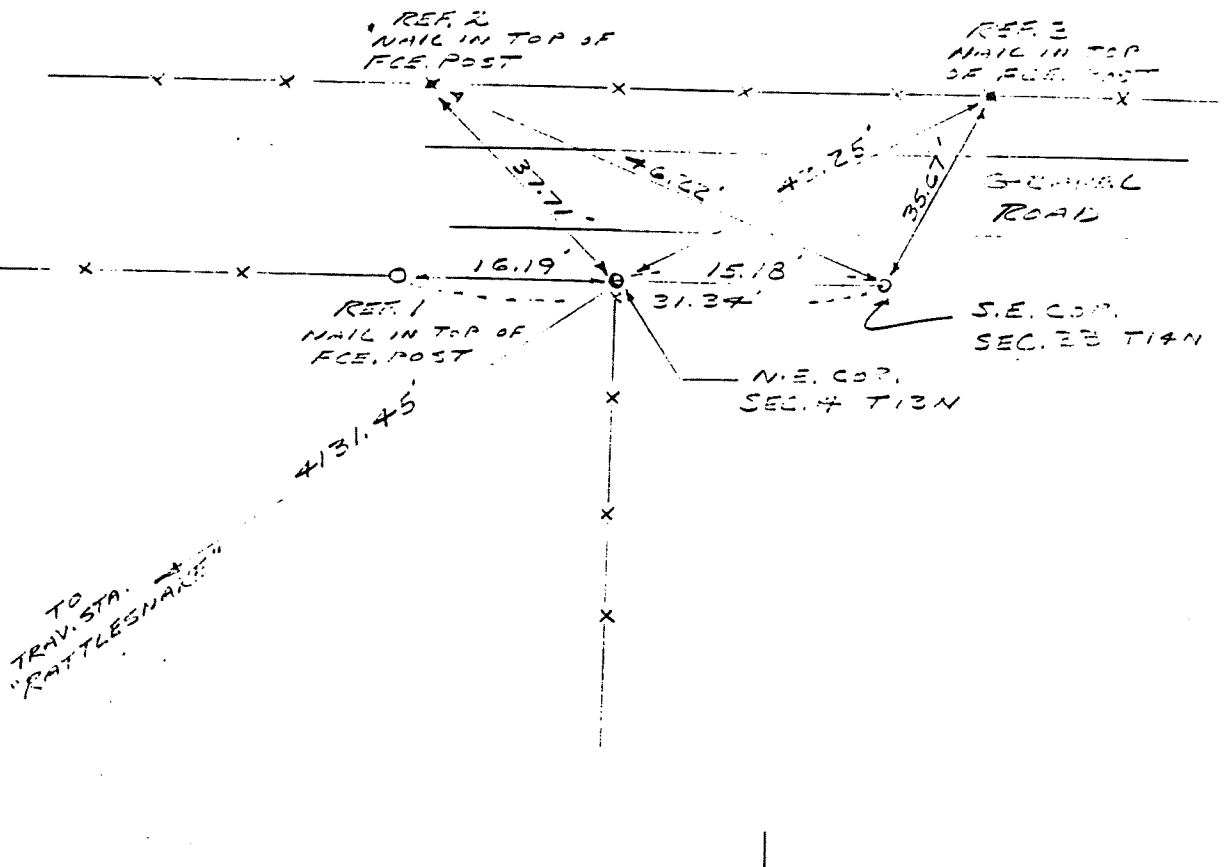

SIGNATURE DATE



COUNTRY U.S.A.	TYPE OF MARK 2" I.P. WITH BRASS CAP	STATION N.E. COR. SEC. 4 T13N R2W
LOCALITY LAFARGE, WIS.	STAMPING ON MARK 43	S.E. COR. SEC. 33 T14N R2W
LATITUDE	LONGITUDE	AGENCY (CAST IN MARKS) CORPS OF ENGRS.
(NORTHING)(EASTING) (FT) 597,877.16	(EASTING)(NORTHING) (FT) 1,838,062.81	ELEVATION (FT) (M)
(NORTHING)(EASTING) (FT) 597,877.17	(EASTING)(NORTHING) (FT) 1,833,077.99	GRID AND ZONE WIS. (SOUTH)
TO OBTAIN	GRID AZIMUTH, ADD	TO THE GEODETTIC AZIMUTH
TO OBTAIN	GRID AZ. (ADD)(SUB.)	TO THE GEODETTIC AZIMUTH

OBJECT	AZIMUTH OR DIRECTION (GEODETTIC)(GRID) (MAGNETIC)	BACK AZIMUTH	GEOD. DISTANCE (METERS) (FEET)	GRID DISTANCE (METERS) (FEET)
CATTLESHACK	N 55° 31' 01" E			413.45
REF. NO. 1	N. 20° 09' 39" W.			16.19
REF. NO. 2	N. 39° 55' 59" W.	N.E. COR. SEC. 4		37.71
REF. NO. 3	N. 35° 31' 01" E.			42.25
N.E. COR. SEC. 4	N. 39° 57' 09" E.	S.E. COR. SEC. 33		15.18
REF. NO. 1	N. 29° 33' 31" W.			31.34
REF. NO. 2	N. 32° 17' 11" W.			43.25
REF. NO. 3	N. 15° 17' 09" E.			35.07

REFERENCE DISTANCES ARE HORIZONTAL -
 3 NAILS DRIVEN VERTICALLY IN TOP OF WOOD POST. SAME POSTS USED FOR EACH COR.



SKETCH