

RECEIVED  
 SEP 14 2004  
 BY: *m.m.*

VERNON COUNTY  
 CERTIFIED U.S. PUBLIC LAND SURVEY MONUMENT RECORD

INSTRUCTIONS: THIS RECORD SHALL SHOW THE LOCATION OF THE CORNER AND SHALL INCLUDE ALL OF THE FOLLOWING ELEMENTS (A-I)

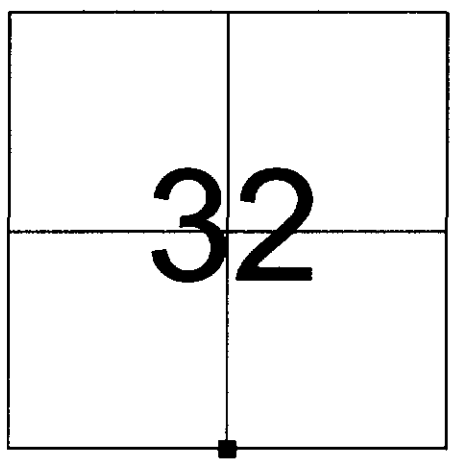
(A) IDENTIFY THE CORNER BY REFERENCE TO THE U.S. PUBLIC LAND SURVEY SYSTEM

■ = CORNER MONUMENT RESTORED

WITNESSES TO CORNER LOCATION:

- 1) PATRICK J. DEDERICH
- 2) JOHN E. DEDERICH

VERNON COUNTY COORDINATES  
 NORTHING: 179,183.95  
 EASTING: 767,566.65



SECTION 32, TOWN 14 NORTH, RANGE 2 WEST

(B) DESCRIBE ANY RECORD EVIDENCE, MONUMENT EVIDENCE, OCCUPATIONAL EVIDENCE, TESTIMONIAL EVIDENCE OR ANY OTHER MATERIAL EVIDENCE YOU CONSIDERED, AND WHETHER THE MONUMENT WAS FOUND OR PLACED.

U.S. ARMY CORPS OF ENGINEERS MONUMENT FOUND IN PLACE. FIT WELL WITH ADJACENT CORNERS.

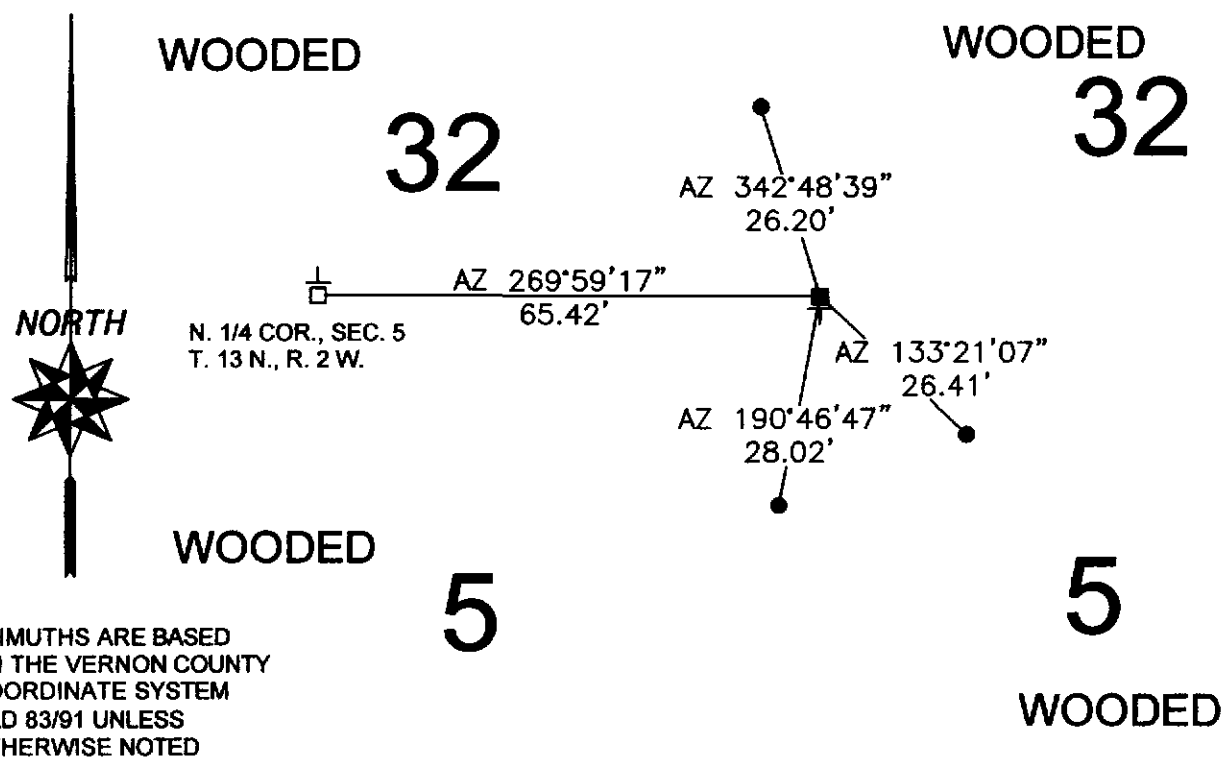
(C) IN THE PLAN VIEW DRAWING BELOW, PROVIDE REFERENCE TIES TO AT LEAST 4 WITNESS MONUMENTS OR, IF THE LOCATION IS WITHIN A MUNICIPALITY, TO AT LEAST 2 WITNESS MONUMENTS. (WITNESS MONUMENTS SHALL BE MADE OF CONCRETE, NATURAL STONE, IRON, OR OTHER EQUALLY DURABLE MATERIAL.) DESCRIBE WITNESS MONUMENTS.

(D) SHOW A PLAN VIEW DRAWING, DEPICTING THE RELEVANT MONUMENTS AND REFERENCE TIES, WHICH IS SUFFICIENTLY DETAILED TO ENABLE ACCURATE RELOCATION OF THE CORNER MONUMENT IF IT IS DISTURBED.

**LEDGEND**

- 3/4" X 24" IRON ROD SET
- U. S ARMY CORPS OF ENGINEERS MONUMENT FOUND
- U. S ARMY CORPS OF ENGINEERS MONUMENT FOUND
- ⊥ 2" CHANNEL POST W/GOVT SIGN

NOT TO SCALE



AZIMUTHS ARE BASED ON THE VERNON COUNTY COORDINATE SYSTEM NAD 83/91 UNLESS OTHERWISE NOTED

(E) DESCRIBE ANY MATERIAL DISCREPANCY BETWEEN THE LOCATION OF THE CORNER AS RESTORED OR REESTABLISHED AND THE LOCATION OF THAT CORNER AS PREVIOUSLY RESTORED OR REESTABLISHED BY DISTANCE AND DIRECTION. SHOW THE DISCREPANCY ON THE PLAN VIEW DRAWING UNDER (D), ABOVE. SHOW THE DISTANCES BETWEEN THE CORNER AS PREVIOUSLY RESTORED OR REESTABLISHED AND (1) THE CORNER AS RESTORED OR REESTABLISHED, AND (2) TO AT LEAST 2 OF THE WITNESS MONUMENTS AS SHOWN ON THE DRAWING IN (D), ABOVE.

(F) WAS THE CORNER RESTORED THROUGH ACCEPTANCE OF (1) AN OBLITERATED EVIDENCE LOCATION, OR (2) A FOUND PERPETUATED LOCATION?

A FOUND, PERPETUATED LOCATION.

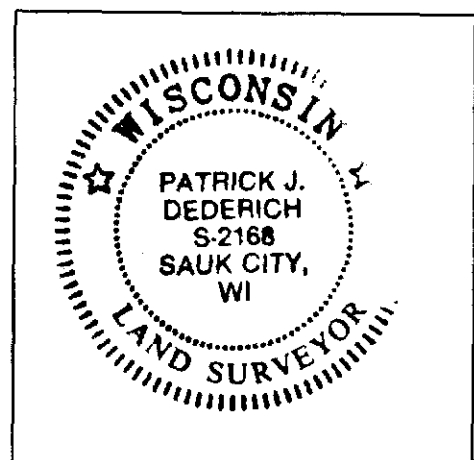
(G & H) WAS THE CORNER REESTABLISHED THROUGH LOST CORNER PROPORTIONATE METHODS? IF SO SHOW THE METHOD, INCLUDING THE DIRECTIONS AND DISTANCES TO OTHER PUBLIC LAND SURVEY CORNERS USED AS EVIDENCE OR USED FOR PROPORTIONING IN DETERMINING THE CORNER LOCATION.

NO.

AFFIX LAND SURVEYOR SEAL

(I) I, PATRICK J. DEDERICH, DO CERTIFY THAT THE LOCATION SHOWN ON THIS RECORD WAS DETERMINED BY ME OR UNDER MY DIRECTION AND CONTROL AND THAT THIS U.S. PUBLIC LAND SURVEY MONUMENT RECORD IS CORRECT AND COMPLETE TO THE BEST OF MY KNOWLEDGE AND BELIEF.

 9/10/2004  
SIGNATURE DATE

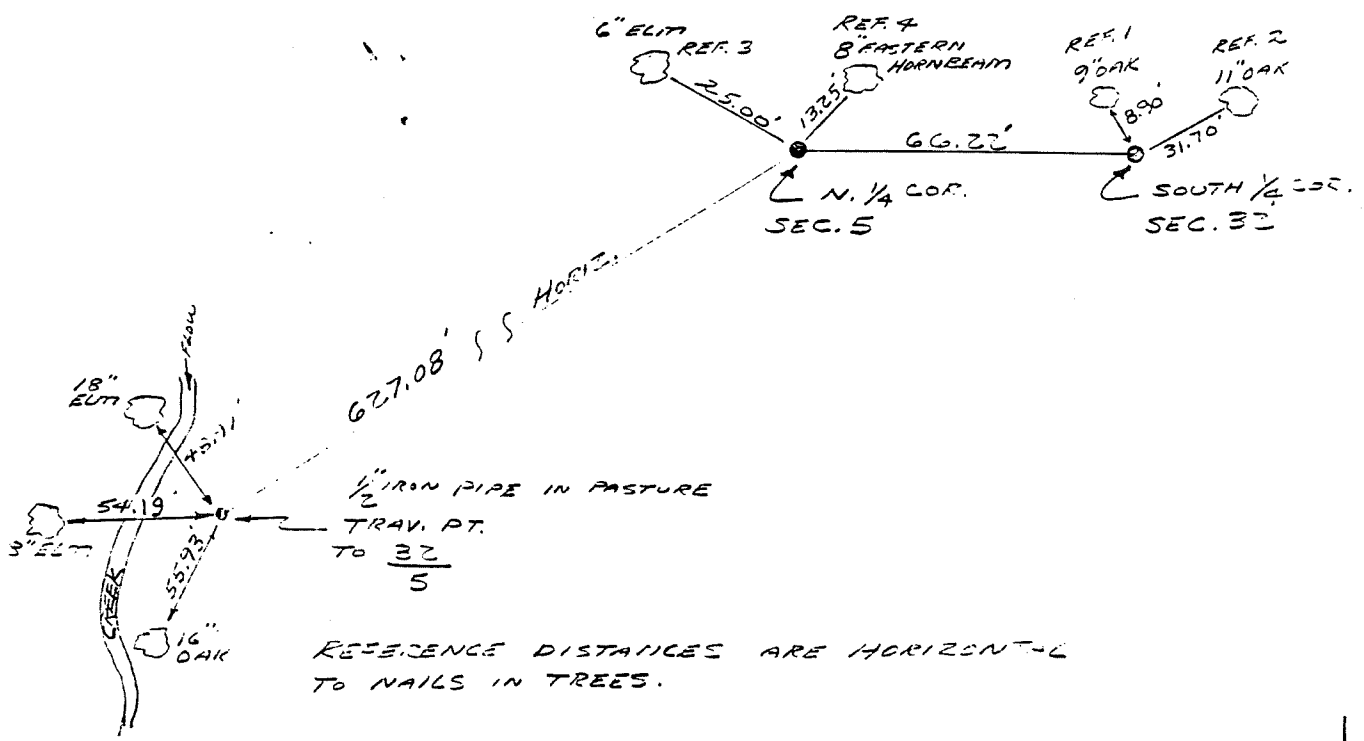


COUNTRY U.S.A.		TYPE OF MARK 2" I.P. WITH BRASS CAP 2" I.P. WITH BRASS CAP		STATION N. 1/4 COR. SEC. 5 T12N S. 1/4 COR. SEC. 32 T19N R2E	
LOCALITY LAFARGE, WIS.		STAMPING ON MARK 5		AGENCY (CAST IN MARKS) CORPS OF ENGRS.	
LATITUDE		LONGITUDE		DATUM	
(NORTHING)(EASTING) 597,912.97 (M)	(EASTING)(NORTHING) 1,830,164.62 (M)	GRID AND ZONE WIS. (SOUTH)		ESTABLISHED BY (AGENCY) CHICAGO DIST.	
(NORTHING)(EASTING) 597,912.37 (M)	(EASTING)(NORTHING) 1,830,230.83 (M)	GRID AND ZONE WIS. (SOUTH)		DATE 1966	ORDER

TO OBTAIN GRID AZIMUTH, ADD TO THE GEODETIC AZIMUTH  
TO OBTAIN GRID AZ. (ADD)(SUB.) TO THE GEODETIC AZIMUTH

OBJECT	AZIMUTH OR DIRECTION (GEODETIC)(GRID) (MAGNETIC)	BACK AZIMUTH	GEOD. DISTANCE (METERS) (FEET)	GRID DISTANCE (METERS) (FEET)
TRAV. PT. TO 32/5	N. 65° 32' 36" E			627.08
REF. NO. 2	N. 32° 16' 35" W.	N. 1/4 COR. SEC. 5		25.00
REF. NO. 2	N. 66° 51' 12" E			13.35
N. 1/4 COR. SEC. 5	S. 89° 28' 48" E			66.22
REF. NO. 1	N. 31° 51' 05" W.	S. 1/4 COR. SEC. 32		31.70
REF. NO. 1	N. 71° 41' 15" E			18.00

REFERENCE DISTANCES ARE HORIZONTAL AND ARE TO NAILS IN TREES. WITNESS TREES ARE DESCRIBED E.



REFERENCE DISTANCES ARE HORIZONTAL TO NAILS IN TREES.

SKETCH