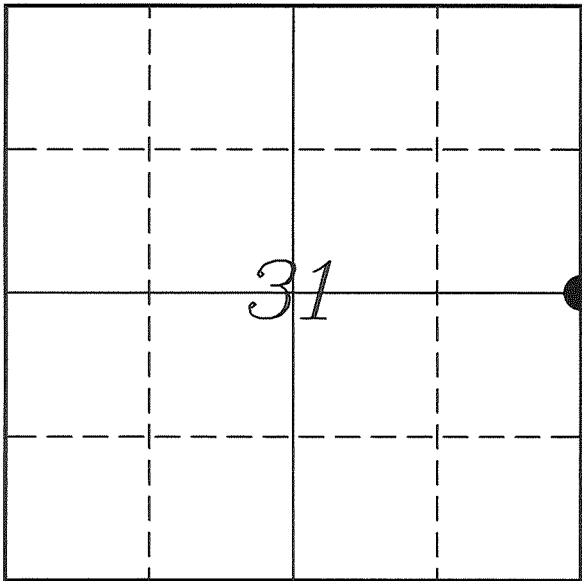

U. S. PUBLIC LAND SURVEY MONUMENT RECORD

SECTION 31, T14N, R2W, TOWN OF WHITESTOWN VERNON COUNTY, WISCONSIN



LOCATION OF LANDMARK

Crew: Laurence E Johns III
Larry Handschy

Date: 11 March 2011

VERNON COUNTY COORDINATE SYSTEM	
Northing	181772.379
Easting	764920.064
Datum	NAD 1983 (2007)
Elevation	
Datum	
TYPE OF LANDMARK:	
Set Lunde Monument	
BEARINGS ARE REFERENCED TO:	
Vernon County Coordinates	

Describe any record evidence, monument evidence, testimonial evidence or any other material evidence you considered and whether the monument was found or restored through acceptance of an obliterated evidence location.

I found the 2" Iron Pipe found by Dechant and Cummer.

After inspection of the Army Corps of Engineers map, I found that the survey performed by them did not include this corner.

It is my belief that Chafer most likely set this pipe, in which appears to be fairly close to a straight-line split. (7.5'± West and 4.5' North of that split). Considering survey methods in the mid 80's in this area, and the very steep & hilly terrain, these distances would be believable.

This pipe has been used in surveys for at least 25 years and the occupation in the area is not very maintained (either no fences or no straight fences).

With no conflicting evidence I accepted the 2" Iron Pipe as the best available evidence of the original government corner and due to its instability, I replaced it with a Lunde Monument.

Describe or show any material discrepancy between the location of the restored corner and that of the corner previously restored or re-established.

Noah Phelps established this corner in October 1847.

Paul Chafer was at this corner, in November 1986, during a survey in Section 32. He does not show on his map what type of monument was located here or a distance to any other corner.

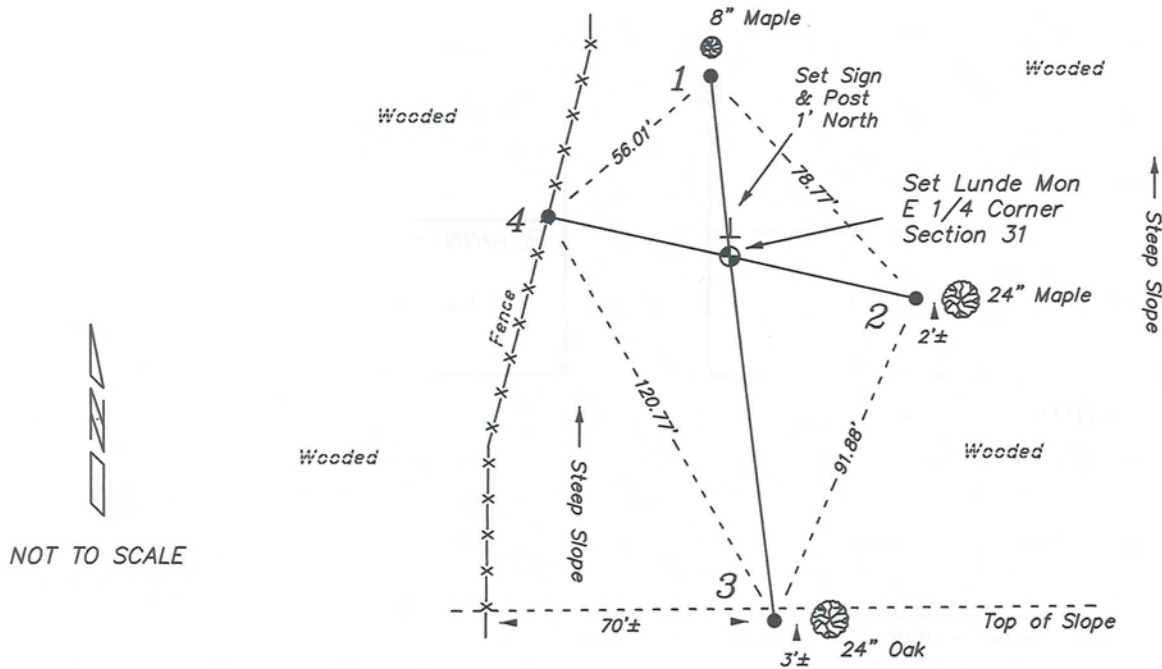
Paul Chafer was at this corner, in subsequent surveys of November 1987 and May 1988, in Section 32. He again does not show what type of monument was used here or any distances to other corners.

Curtis Cummer was at this corner, in July 1998, during a survey in Section 31. He shows that he found a 2" Iron Pipe.

Gary Dechant was at this corner, in October 2001, during a survey in Section 31. He shows that he found the 2" Iron Pipe as well. He prepared a tie sheet for this corner and states that he believed this pipe was set by the Army Corps of Engineers.

RECORD OF DURABLE WITNESS MONUMENTS

NO	DESCRIPTION	BEARING	DISTANCE
1	Set 3/4" x 18" Iron Rod 1' South of 8" Maple	N 05°52'52" W	47.14'
2	Set 3/4" x 18" Iron Rod 2' West of a 24" Maple	S 77°12'24" E	49.79'
3	Set 3/4" x 18" Iron Rod 3' West of 24" Oak	S 06°53'29" E	95.79'
4	Set 3/4" x 18" Iron Rod In Fence	N 77°37'08" W	48.43'



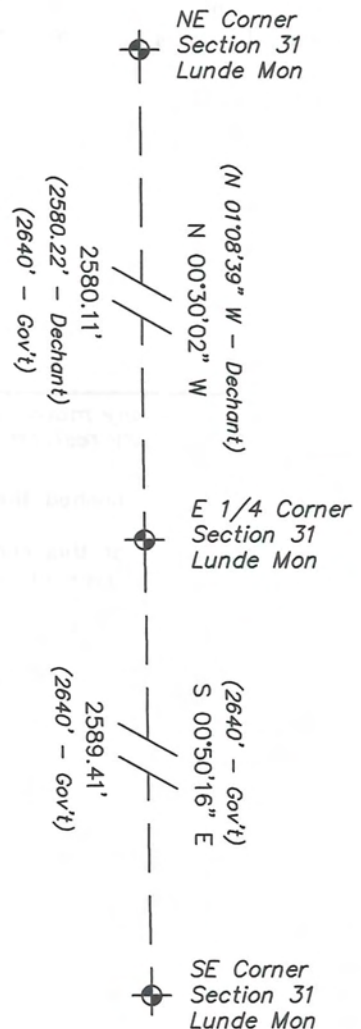
PLAN VIEW DRAWING OF REFERENCE TIES

Map Showing Distance And Direction To Other Public Land Survey
Corners Used For Re-Establishing The Corner



I, Laurence E Johns III RLS 2804, Registered Land Surveyor, hereby certify that the corner location shown on this record was determined by me or under my direction and control, and that this U.S. Public Land Survey Monument Record is correct and complete to the best of my knowledge and belief.

Laurence E Johns III RLS 2804
 Eagle Ridge Surveying, LLC
 PO Box 213
 Wilton, Wisconsin
 13 March 2011

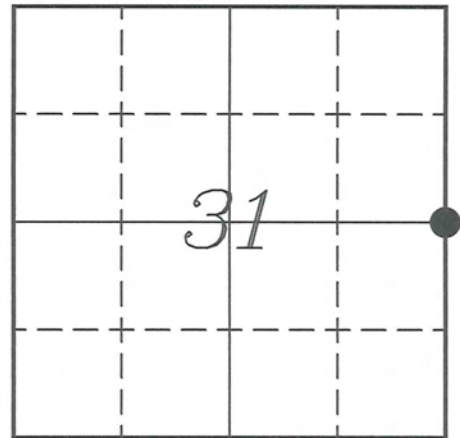


VERNON COUNTY COORDINATE SUBMISSION FORM
 "As An Addendum To"
VERNON COUNTY
CERTIFIED U.S. PUBLIC LAND SURVEY MONUMENT RECORD

INSTRUCTIONS: THIS RECORD FORM SHOULD BE USED WHEN COORDINATES ARE PROVIDED FOR A PUBLIC LAND SURVEY CORNER AND SHALL INCLUDE ALL OF THE FOLLOWING ELEMENTS (A-D)

(A) IDENTIFY THE CORNER BY REFERENCE TO THE U.S. PUBLIC LAND SURVEY SYSTEM IN DIAGRAM AT RIGHT

● = CORNER MONUMENT



T 14 N, R 2 W

(B) COORDINATES:

GEOGRAPHIC (Degrees Minutes Seconds)

LATITUDE: 43° 38' 44.9109" N

LONGITUDE: 90° 39' 05.1024" W

ELLIPSOID HT (m): _____

DATUM: NAD 1983 (2007)

GEOID03 ADJ: -33.479

ORTHOMETRIC HT: _____

VERNON COUNTY (U.S. FEET)

Coord Quality (+/-)

NORTHING (Y): 181772.379 _____

EASTING (X): 764920.064 _____

GPS METHOD USED TO COMPUTE COORDINATES (check as applicable)

RTK Observations Static Baselines OPUS-RS Solution OPUS-S Solution

Combination of GPS Observations & Conventional Procedures

Single Angle Measurement Closed Traverse Loop

Was a Least Squares Adjustment Used to Compute Coordinates? Yes / No

BASE CONTROL USED FOR COORDINATE COMPUTATION

Station Name	Station Coordinates	Date/Time
<u>OPUS Sta - TS 80</u>	<u>43° 39' 09.1210" N 90° 38' 33.6149" W</u>	<u>03/11/2011 - 13:19</u>
	<u>N - 184227.675 E - 767231.248</u>	
<u>Same</u>		<u>03/12/2011 - 10:15</u>

(C) REASON FOR COORDINATES SUBMITTAL (check one)

Being Filed With a New U.S. PLS Monument Record

To Correct the Coordinates Listed on a Previously Filed PLS Monument Record

To Provide Coordinates for Previously Filed PLS Monument Record without Coordinates

To Provide Supplemental Coordinates for a Previously Filed PLS Monument Record

MOST RECENT PLS MONUMENT RECORD DATE: 4 October 2001

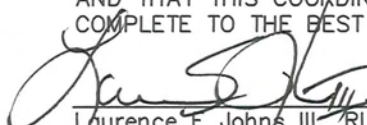
R.L.S. WHO CREATED MOST RECENT PLS MONUMENT RECORD: Gary L Dechant

(D) AGENT(S) PERFORMING GPS OBSERVATIONS & COORDINATE COMPUTATION

1) LAURENCE E JOHNS III

2) _____

I, LAURENCE E JOHNS III RLS 2804, REGISTERED LAND SURVEYOR, HEREBY CERTIFY THAT THE COORDINATES PROVIDED ON THIS RECORD WERE DETERMINED BY ME OR UNDER MY DIRECTION AND CONTROL AND THAT THIS COORDINATE SUBMISSION FORM IS CORRECT AND COMPLETE TO THE BEST OF MY KNOWLEDGE AND BELIEF.


 Laurence E Johns III RLS 2804
 Eagle Ridge Surveying, LLC
 PO Box 213
 Wilton, Wisconsin
 13 March 2011

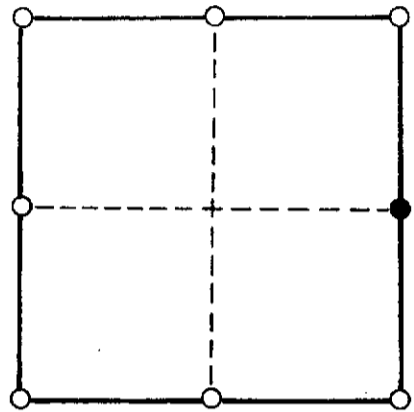


RECEIVED
 OCT 11 2001
 BY: m.m.

CERTIFIED LAND CORNER

I do hereby certify that on the 27th day of September, 2001, I found (evidence) (~~no evidence~~) of the Ex corner of Section 31, T 14 N, R 2 W, Fourth Principal Meridian, and I re-established said corner according to the Wisconsin Statutes as shown and described hereon.

SECTION 31



● = CORNER LOCATION

T 14 N R 2 W

TOWN OF: WHITESTOWN

Gary L. Dechant
 WISCONSIN
 GARY L. DECHANT
 S-1744
 CAMP
 DOUGLAS, WI
 LAND SURVEYOR
 October 4, 2001

Witnesses to corner location:

Zachariah P. Dechant

Gary L. Dechant

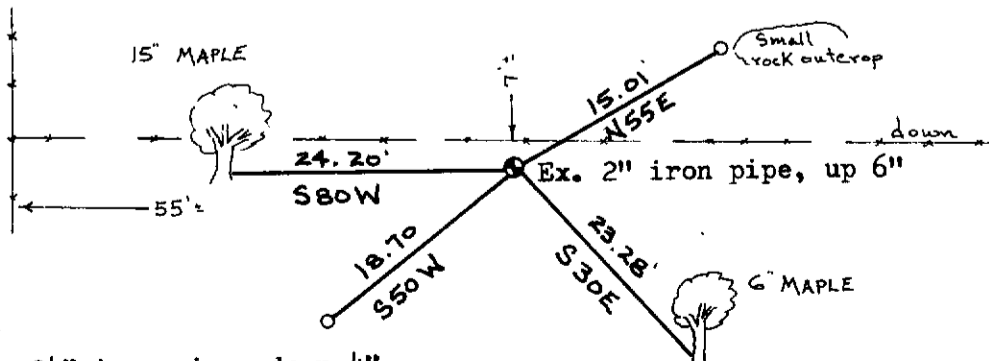
HISTORY OF CORNER:

Curtis Cumber shows he found a 2" iron pipe here in his Plat of Survey dated July 1998.
 I believe the existing 2" iron pipe was set by the U.S. Corps of Engineers in the 1950's or 1960's.

DESCRIPTION OF CORNER EVIDENCE FOUND:

Found a 2" iron pipe and three dead, but plainly marked, bearing trees.
 Corner is 417' South of Road.

DESCRIPTION OF CORNER AND WITNESS MARKERS:



o = Set 1" O.D. x 24" iron pipe, down 4"

Trees double blazed with 2" mag nail set.