

RECEIVED
 MAR 3 1 2004
 BY: *G. Jacobson*

VERNON COUNTY CERTIFIED U.S. PUBLIC LAND SURVEY MONUMENT RECORD

INSTRUCTIONS: THIS RECORD SHALL SHOW THE LOCATION OF THE CORNER AND SHALL INCLUDE ALL OF THE FOLLOWING ELEMENTS (A-F)

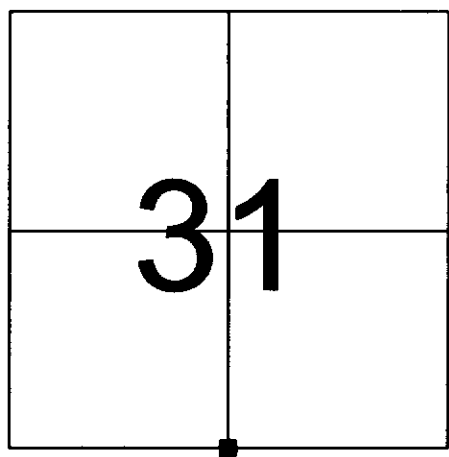
(A) IDENTIFY THE CORNER BY REFERENCE TO THE U.S. PUBLIC LAND SURVEY SYSTEM

■ = CORNER MONUMENT RESTORED

WITNESSES TO CORNER LOCATION:

- 1) PATRICK J. DEDERICH
- 2) JOHN E. DEDERICH

VERNON COUNTY COORDINATES
 NORTHING: 179,170.03
 EASTING: 762,321.60



SECTION 31, TOWN 14 NORTH, RANGE 2 WEST

(B) DESCRIBE ANY RECORD EVIDENCE, MONUMENT EVIDENCE, OCCUPATIONAL EVIDENCE, TESTIMONIAL EVIDENCE OR ANY OTHER MATERIAL EVIDENCE YOU CONSIDERED, AND WHETHER THE MONUMENT WAS FOUND OR PLACED.

FOUND 3/4" DIAMETER REBAR AS PER TIE SHEET DATED 2/17/00 BY CURTIS J. CUMMER. REPLACED WITH LUNDE MONUMENT SET 18" DEEP.

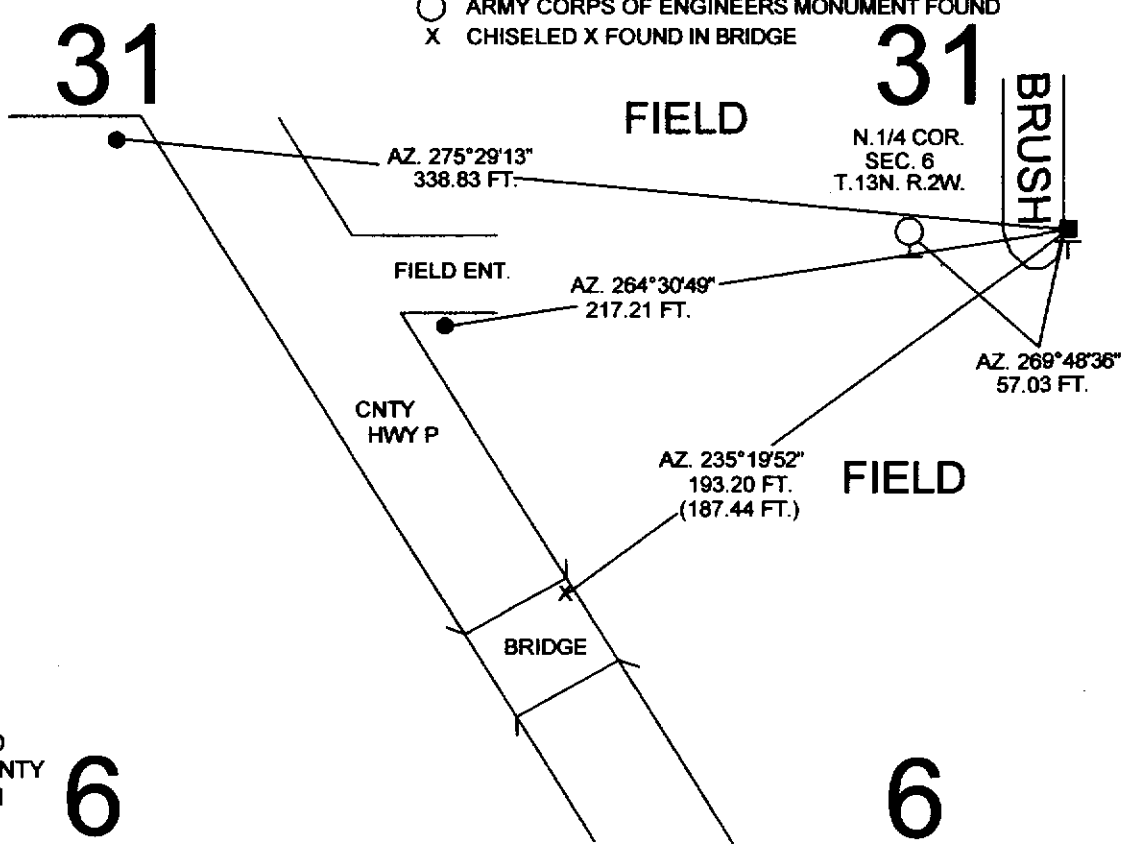
(C) IN THE PLAN VIEW DRAWING BELOW, PROVIDE REFERENCE TIES TO AT LEAST 4 WITNESS MONUMENTS OR, IF THE LOCATION IS WITHIN A MUNICIPALITY, TO AT LEAST 2 WITNESS MONUMENTS. (WITNESS MONUMENTS SHALL BE MADE OF CONCRETE, NATURAL STONE, IRON, OR OTHER EQUALLY DURABLE MATERIAL.) DESCRIBE WITNESS MONUMENTS.

(D) SHOW A PLAN VIEW DRAWING, DEPICTING THE RELEVANT MONUMENTS AND REFERENCE TIES, WHICH IS SUFFICIENTLY DETAILED TO ENABLE ACCURATE RELOCATION OF THE CORNER MONUMENT IF IT IS DISTURBED.

LEDGEND

- LUNDE MONUMENT SET
- ⊥ GOV'T SIGN SET
- 3/4" X 24" IRON ROD SET
- ARMY CORPS OF ENGINEERS MONUMENT FOUND
- X CHISELED X FOUND IN BRIDGE

NOT TO SCALE



BEARINGS ARE BASED ON THE VERNON COUNTY COORDINATE SYSTEM NAD 83/91

6

6

(E) DESCRIBE ANY MATERIAL DISCREPANCY BETWEEN THE LOCATION OF THE CORNER AS RESTORED OR REESTABLISHED AND THE LOCATION OF THAT CORNER AS PREVIOUSLY RESTORED OR REESTABLISHED BY DISTANCE AND DIRECTION. SHOW THE DISCREPANCY ON THE PLAN VIEW DRAWING UNDER (D), ABOVE. SHOW THE DISTANCES BETWEEN THE CORNER AS PREVIOUSLY RESTORED OR REESTABLISHED AND (1) THE CORNER AS RESTORED OR REESTABLISHED, AND (2) TO AT LEAST 2 OF THE WITNESS MONUMENTS AS SHOWN ON THE DRAWING IN (D), ABOVE.

(F) WAS THE CORNER RESTORED THROUGH ACCEPTANCE OF (1) AN OBLITERATED EVIDENCE LOCATION, OR (2) A FOUND PERPETUATED LOCATION?

(2) A FOUND PERPETUATED LOCATION.

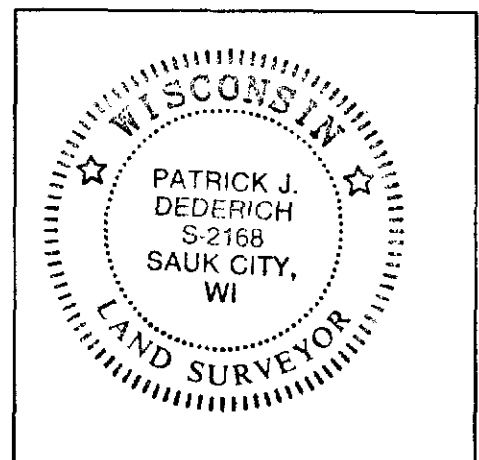
(G & H) WAS THE CORNER REESTABLISHED THROUGH LOST CORNER PROPORTIONATE METHODS? IF SO SHOW THE METHOD, INCLUDING THE DIRECTIONS AND DISTANCES TO OTHER PUBLIC LAND SURVEY CORNERS USED AS EVIDENCE OR USED FOR PROPORTIONING IN DETERMINING THE CORNER LOCATION.

NO

AFFIX LAND SURVEYOR SEAL

(I) I, PATRICK J. DEDERICH CERTIFY THAT THE LOCATION SHOWN ON THIS RECORD WAS DETERMINED BY ME OR UNDER MY DIRECTION AND CONTROL AND THAT THIS U.S. PUBLIC LAND SURVEY MONUMENT RECORD IS CORRECT AND COMPLETE TO THE BEST OF MY KNOWLEDGE AND BELIEF.

Patrick J. Dederich 2/30/2004
SIGNATURE DATE



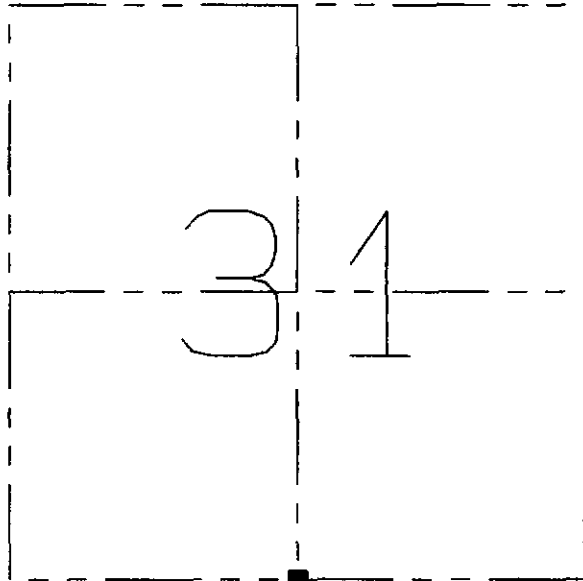
Vernon County Certified U.S. Public Land Survey Monument Record

I, Curtis J. Cummer, certify that the corner location shown on this record was determined by me, and that this U.S. Public Land Survey Monument Record is correct and complete to the best of my knowledge and belief.



Curtis J. Cummer

Date



Section 31 T 14 N. R 2 ~~XX~~ W
TOWN OF Whitestown

WISCONSIN COORDINATE SYSTEM (SOUTH ZONE)

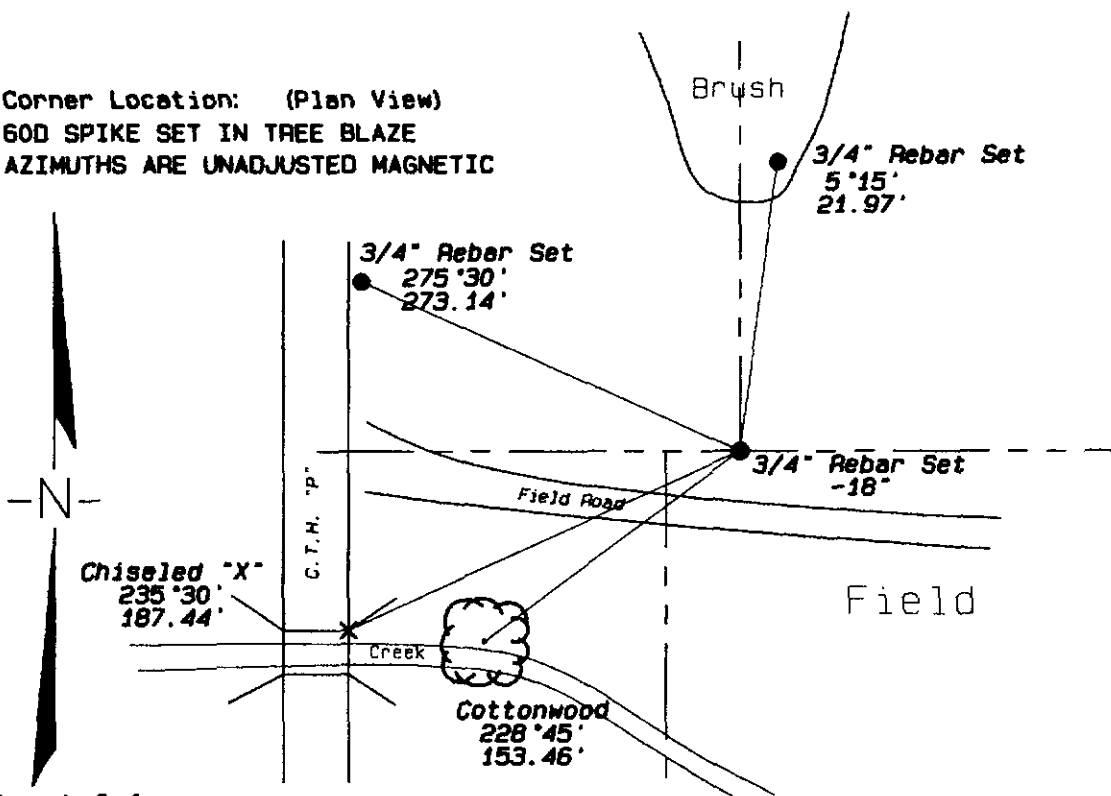
NORTHING:
EASTING:
ELEVATION:

The monument was ~~XXXX~~ / PLACED

Record evidence, Monument evidence, Occupational evidence, Testimonial evidence, or any other material evidence considered:

No original evidence was found. Corner was established from related distances from found U.S. Army Corps of Engineers monuments and reset per plat.

Corner Location: (Plan View)
60D SPIKE SET IN TREE BLAZE
AZIMUTHS ARE UNADJUSTED MAGNETIC



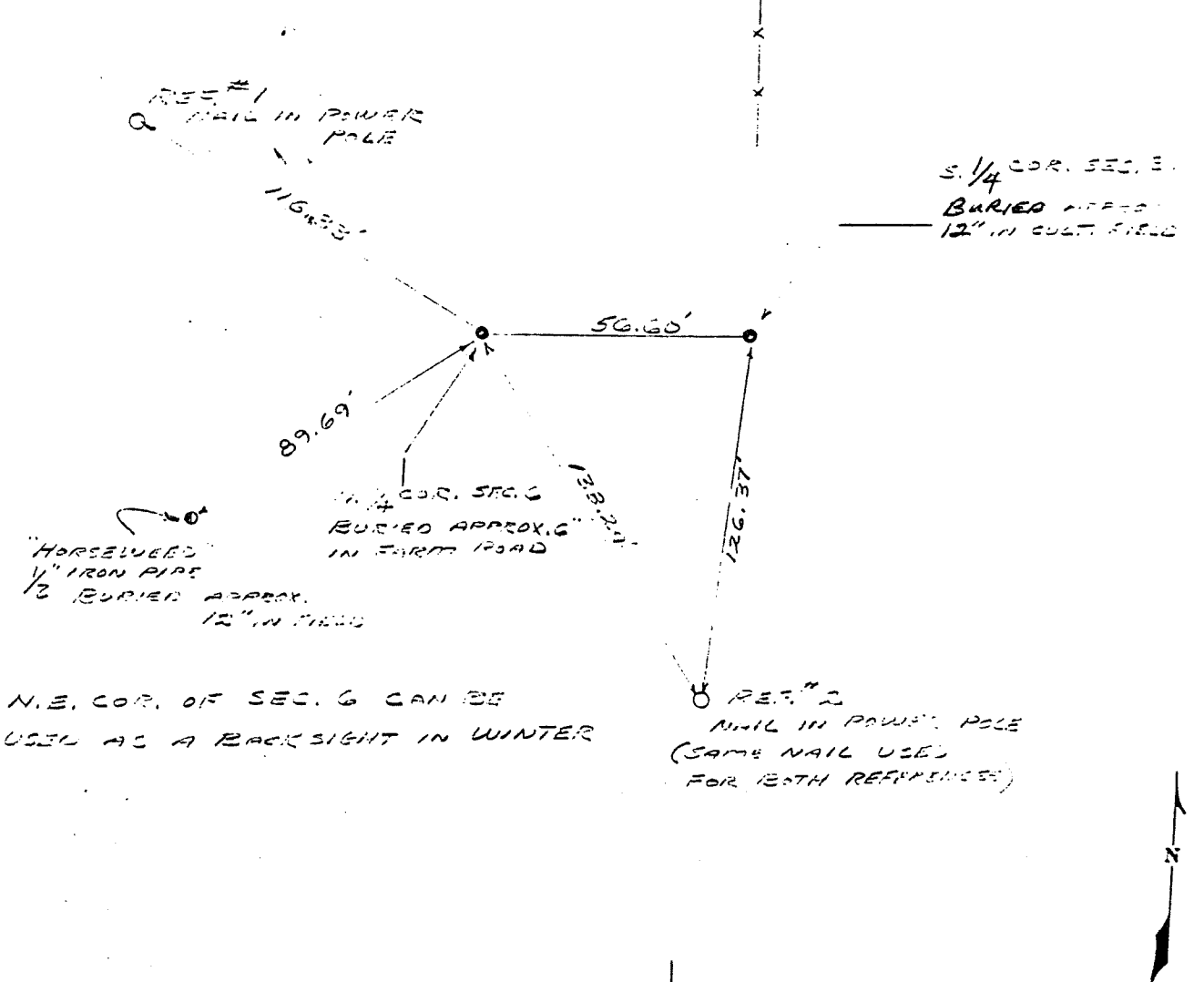
Not Drawn to Scale

COUNTRY U.S.A.	TYPE OF MARK 2" I.P. WITH BRASS CAP	STATION S. 1/4 COR. SEC. 31 T14N R2E		
LOCALITY LAFAYETTE, LOUIS.	STAMPING ON MARK 6	AGENCY (CAST IN MARKS) CORPS OF ENGRS.	ELEVATION (FT) (M)	
LATITUDE	LONGITUDE	DATUM	DATUM	
(NORTHING)(EASTING) (FT) (M) 577 946.59	(EASTING)(NORTHING) (FT) (M) 1 577 985.46	GRID AND ZONE N15 (SOUTH)	ESTABLISHED BY (AGENCY) CHICAGO DISTRICT	
(NORTHING)(EASTING) (FT) (M) 577 947.50	(EASTING)(NORTHING) (FT) (M) 1 577 985.87	GRID AND ZONE " "	DATE 1966	ORDER

TO OBTAIN GRID AZIMUTH, ADD TO THE GEODETIC AZIMUTH
 TO OBTAIN GRID AZ. (ADD)(SUB.) TO THE GEODETIC AZIMUTH

OBJECT	AZIMUTH OR DIRECTION (GEODETH)(GRID) (MAGNETIC)	BACK AZIMUTH	GEOD. DISTANCE (METERS) (FEET)	GRID DISTANCE (METERS) (FEET)
"HORSEWEED"	N. 55° 39' 46" E	" "		88.6'
REF. NO. 1	N. 79° 46' 12" W.	REF. FOR N. 1/4		116.33'
REF. NO. 2	S. 23° 22' 12" E.	COR. 6		136.24'

6.50" NAILS ARE HORIZONTAL AND TO NAILS IN POWER POLES.



SKETCH