

RECEIVED  
 SEP 14 2004  
 BY: m. m.

VERNON COUNTY  
 CERTIFIED U.S. PUBLIC LAND SURVEY MONUMENT RECORD

INSTRUCTIONS: THIS RECORD SHALL SHOW THE LOCATION OF THE CORNER AND SHALL INCLUDE ALL OF THE FOLLOWING ELEMENTS (A-I)

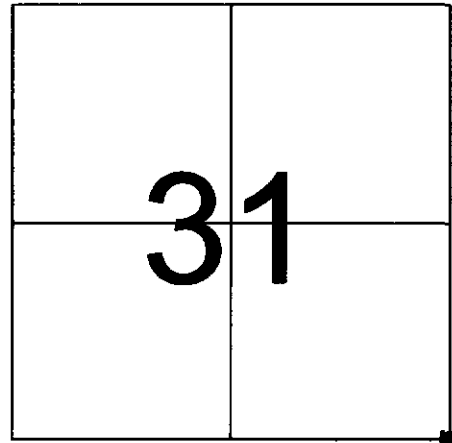
(A) IDENTIFY THE CORNER BY REFERENCE TO THE U.S. PUBLIC LAND SURVEY SYSTEM

■ = CORNER MONUMENT RESTORED

WITNESSES TO CORNER LOCATION:

- 1) PATRICK J. DEDERICH
- 2) JOHN E. DEDERICH

VERNON COUNTY COORDINATES  
 NORTHING: 179,183.25  
 EASTING: 764,957.92



SECTION 31, TOWN 14 NORTH, RANGE 2 WEST

(B) DESCRIBE ANY RECORD EVIDENCE, MONUMENT EVIDENCE, OCCUPATIONAL EVIDENCE, TESTIMONIAL EVIDENCE OR ANY OTHER MATERIAL EVIDENCE YOU CONSIDERED, AND WHETHER THE MONUMENT WAS FOUND OR PLACED.

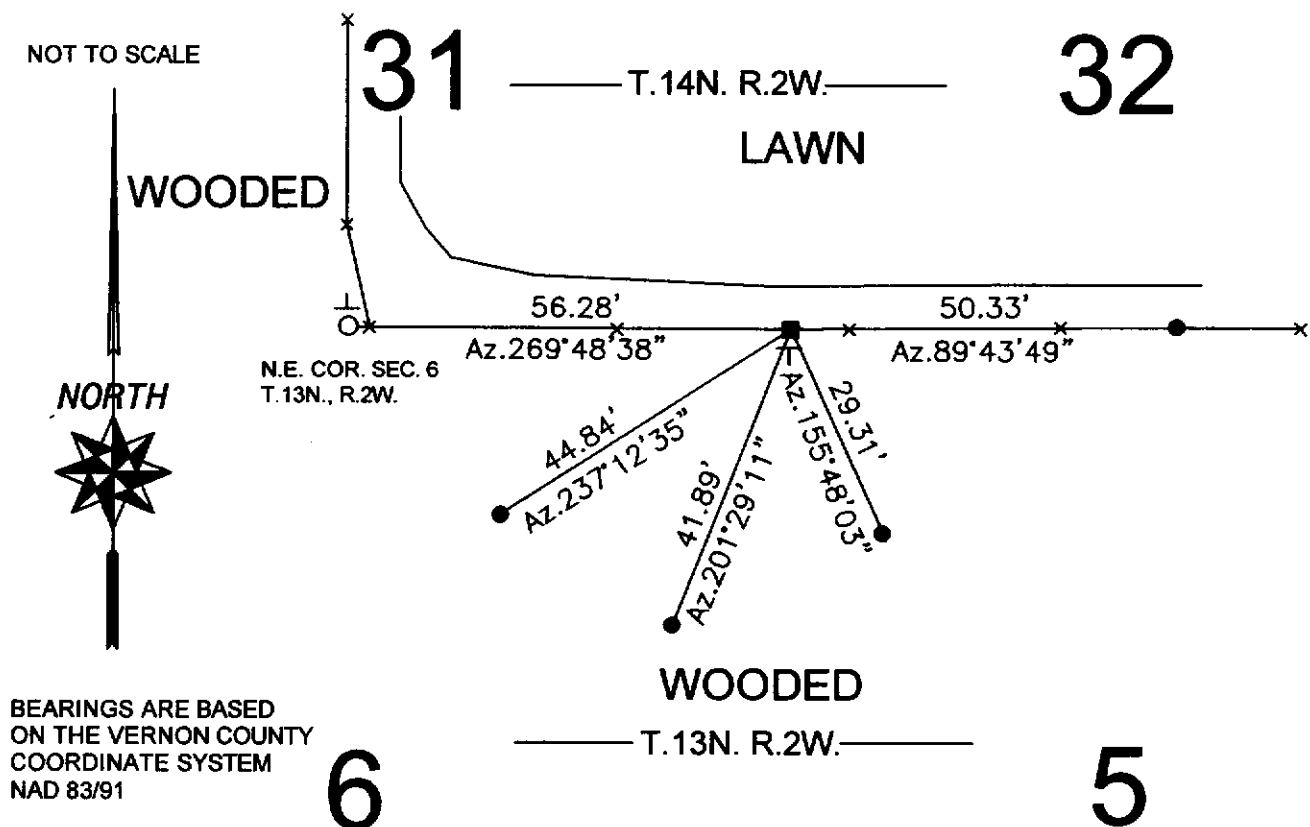
FOUND ARMY CORPS OF ENGINEERS MONUMENT. ACCEPTED AND TIED AS SHOWN.

(C) IN THE PLAN VIEW DRAWING BELOW, PROVIDE REFERENCE TIES TO AT LEAST 4 WITNESS MONUMENTS OR, IF THE LOCATION IS WITHIN A MUNICIPALITY, TO AT LEAST 2 WITNESS MONUMENTS. (WITNESS MONUMENTS SHALL BE MADE OF CONCRETE, NATURAL STONE, IRON, OR OTHER EQUALLY DURABLE MATERIAL.) DESCRIBE WITNESS MONUMENTS.

(D) SHOW A PLAN VIEW DRAWING, DEPICTING THE RELEVANT MONUMENTS AND REFERENCE TIES, WHICH IS SUFFICIENTLY DETAILED TO ENABLE ACCURATE RELOCATION OF THE CORNER MONUMENT IF IT IS DISTURBED.

**LEDGEND**

- 3/4" X 24" IRON ROD SET
- ⊥ GOV'T SIGN SET
- ARMY CORPS OF ENGINEERS MONUMENT FOUND
- ARMY CORPS OF ENGINEERS MONUMENT FOUND



(E) DESCRIBE ANY MATERIAL DISCREPANCY BETWEEN THE LOCATION OF THE CORNER AS RESTORED OR REESTABLISHED AND THE LOCATION OF THAT CORNER AS PREVIOUSLY RESTORED OR REESTABLISHED BY DISTANCE AND DIRECTION. SHOW THE DISCREPANCY ON THE PLAN VIEW DRAWING UNDER (D), ABOVE. SHOW THE DISTANCES BETWEEN THE CORNER AS PREVIOUSLY RESTORED OR REESTABLISHED AND (1) THE CORNER AS RESTORED OR REESTABLISHED, AND (2) TO AT LEAST 2 OF THE WITNESS MONUMENTS AS SHOWN ON THE DRAWING IN (D), ABOVE.

(F) WAS THE CORNER RESTORED THROUGH ACCEPTANCE OF (1) AN OBLITERATED EVIDENCE LOCATION, OR (2) A FOUND PERPETUATED LOCATION?


(2) A FOUND PERPETUATED LOCATION.

(G & H) WAS THE CORNER REESTABLISHED THROUGH LOST CORNER PROPORTIONATE METHODS? IF SO SHOW THE METHOD, INCLUDING THE DIRECTIONS AND DISTANCES TO OTHER PUBLIC LAND SURVEY CORNERS USED AS EVIDENCE OR USED FOR PROPORTIONING IN DETERMINING THE CORNER LOCATION.

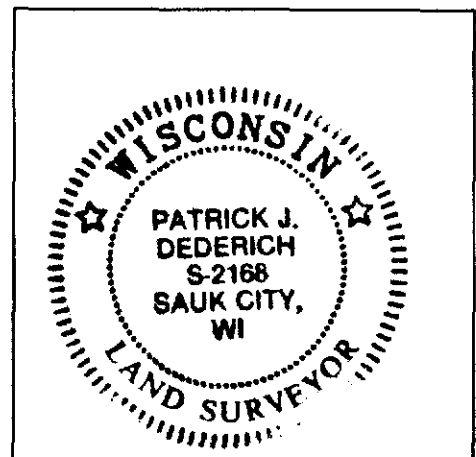
NO.

AFFIX LAND SURVEYOR SEAL

(I) I, PATRICK J. DEDERICH CERTIFY THAT THE LOCATION SHOWN ON THIS RECORD WAS DETERMINED BY ME OR UNDER MY DIRECTION AND CONTROL AND THAT THIS U.S. PUBLIC LAND SURVEY MONUMENT RECORD IS CORRECT AND COMPLETE TO THE BEST OF MY KNOWLEDGE AND BELIEF.

  
SIGNATURE

9/8/2004  
DATE

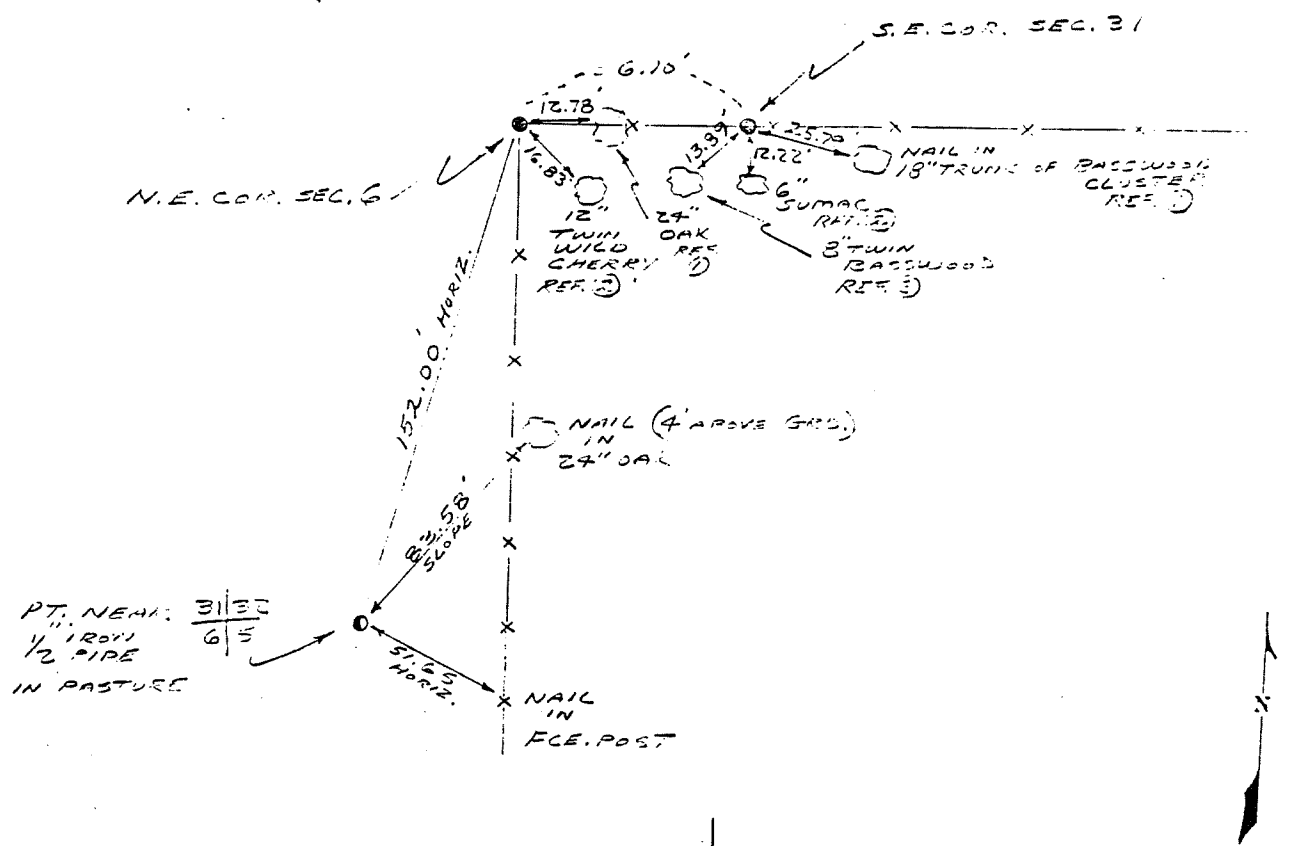


COUNTRY USA	TYPE OF MARK 2" I.P. WITH BRASS CAP 2" I.P. WITH BRASS CAP	STATION N.E. COR. SEC. 6 T13N R2E S.E. COR. SEC. 31 T14N R2E	ELEVATION (FT) (M)
LOCALITY LA FARGE, WIS.	STAMPING ON MARK 6/5	AGENCY (CAST IN MARKS) CORPS OF ENGRS.	
LATITUDE	LONGITUDE	DATUM	DATUM
(NORTHING)(EASTING) (FT) 597 936.27 (M)	(EASTING)(NORTHING) (FT) 1,827,566.10 (M)	GRID AND ZONE WIS. (SOUTH)	ESTABLISHED BY (AGENCY) CHICAGO DISTRICT
(NORTHING)(EASTING) (FT) 597 936.05 (M)	(EASTING)(NORTHING) (FT) 1,827,602.19 (M)	GRID AND ZONE WIS. (SOUTH)	DATE 1965

TO OBTAIN GRID AZIMUTH, ADD TO THE GEODETIC AZIMUTH  
TO OBTAIN GRID AZ. (ADD)(SUB.) TO THE GEODETIC AZIMUTH

OBJECT	AZIMUTH OR DIRECTION (GEODETIC)(GRID) (MAGNETIC)	BACK AZIMUTH	GEOD. DISTANCE (METERS) (FEET)	GRID DISTANCE (METERS) (FEET)
PT. NEAR 3/130 4/5	N. 19° 32' 30" E			150
REF. NO. 1	N. 59° 23' 50" E	N.E. COR. SEC. 6		17.7
REF. NO. 2	S. 59° 52' 50" E			15.5
N.E. COR. SEC. 6	N. 29° 46' 15" W			56.5
REF. NO. 1	S. 52° 20' 35" E	S.E. COR. SEC. 31		25.0
REF. NO. 2	S. 12° 52' 25" W			12.2
REF. NO. 3	S. 20° 41' 05" W			13.5

REFERENCE DISTANCES TO SECTION CORNERS ARE HORIZONTAL AND ARE FROM NAILS IN TREES. TREES ARE BLAZED AND SURNAMED.



SKETCH