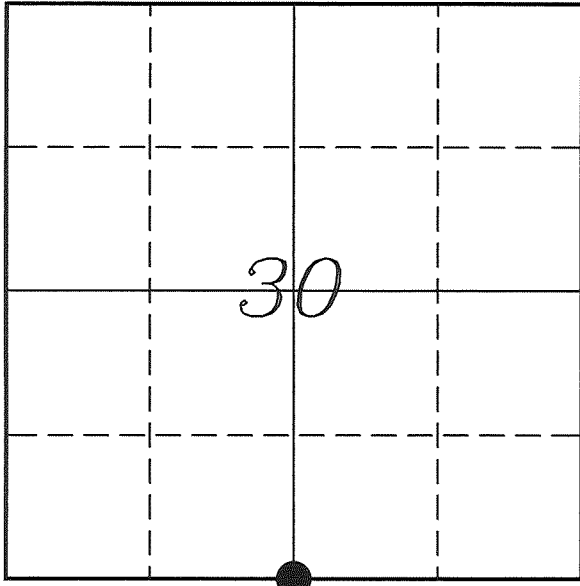

U. S. PUBLIC LAND SURVEY MONUMENT RECORD

SECTION 30, T14N, R2W, TOWN OF WHITESTOWN VERNON COUNTY, WISCONSIN



LOCATION OF LANDMARK

Crew: Laurence E Johns III
Larry Handschy

Date: 2 March 2011

VERNON COUNTY COORDINATE SYSTEM	
Northing	184449.830
Easting	762291.393
Datum	NAD 1983 (2007)
Elevation	
Datum	
TYPE OF LANDMARK:	
Set Lunde Monument	
BEARINGS ARE REFERENCED TO:	
Vernon County Coordinates	

Describe any record evidence, monument evidence, testimonial evidence or any other material evidence you considered and whether the monument was found or restored through acceptance of an obliterated evidence location.

No bearings trees of record were located.

I found the 3/4" Iron Rod set by Cummer and used by Dechant, in the position he called for.

Distances to the West and East are slightly shorter than government distances but are very good for the terrain.

It appears that this occupation would be a good indication of the original corner and therefore, I have accepted Cummer's 3/4" Iron Rod as the best available evidence of the original corner and replaced it with a Lunde Monument.

Describe or show any material discrepancy between the location of the restored corner and that of the corner previously restored or re-established.

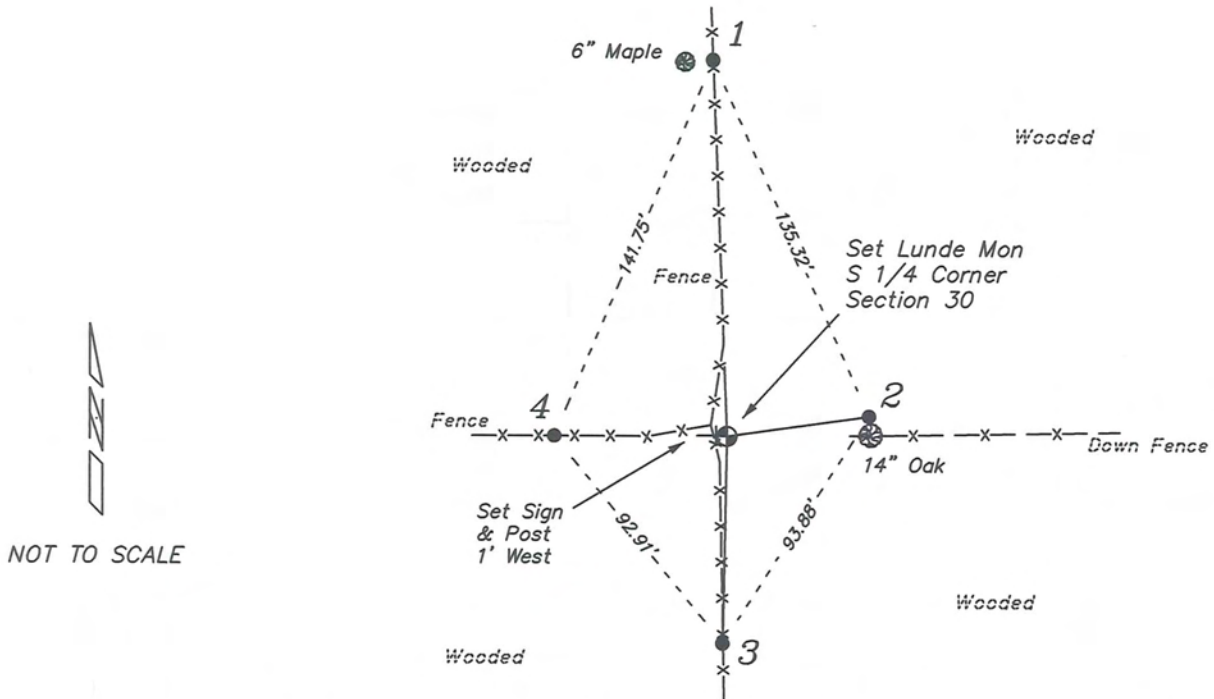
Noah Phelps established this corner in October 1847.

Curtis Cummer was at this corner, in July 1998, during a survey in Section 31. He sets a 3/4" Iron Rod at occupation and prepares a tie sheet for it.

Gary Dechant was at this corner, in October 2001, during a survey in Section 31. He shows that he found a 3/4" Iron Rod.

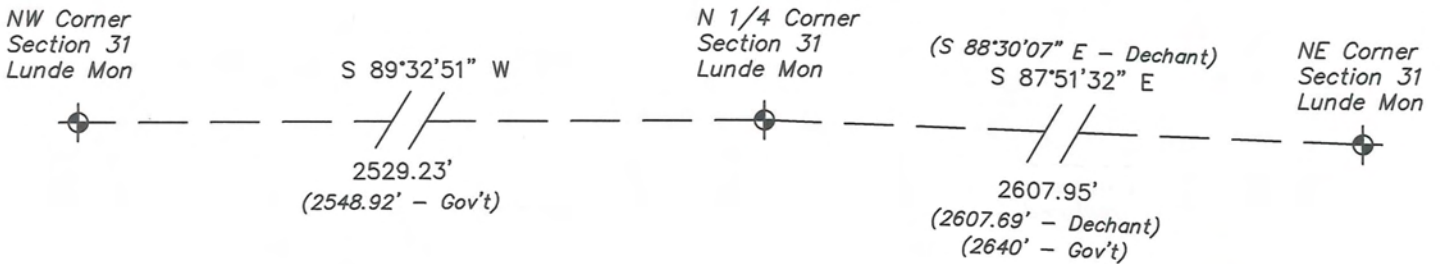
RECORD OF DURABLE WITNESS MONUMENTS

NO	DESCRIPTION	BEARING	DISTANCE
1	Set 3/4" x 18" Iron Rod In Fence/1' East of 6" of Maple	N 02°19'33" W	130.92'
2	Set 3/4" x 18" Iron Rod 1' North of 14" Oak	N 81°54'16" E	49.84'
3	Set 3/4" x 18" Iron Rod In Fence	S 01°04'34" W	72.00'
4	Set 3/4" x 18" Iron Rod In Fence	N 89°57'22" W	60.02'

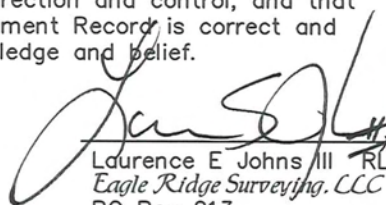


PLAN VIEW DRAWING OF REFERENCE TIES

Map Showing Distance And Direction To Other Public Land Survey Corners Used For Re-Establishing The Corner



I, Laurence E Johns III RLS 2804, Registered Land Surveyor, hereby certify that the corner location shown on this record was determined by me or under my direction and control, and that this U.S. Public Land Survey Monument Record is correct and complete to the best of my knowledge and belief.


 Laurence E Johns III RLS 2804
 Eagle Ridge Surveying, LLC
 PO Box 213
 Wilton, Wisconsin
 11 March 2011

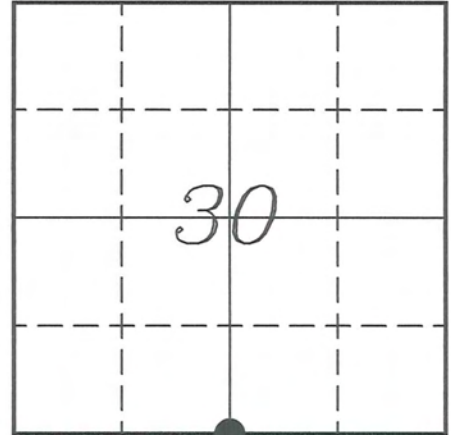


VERNON COUNTY COORDINATE SUBMISSION FORM
 "As An Addendum To"
VERNON COUNTY
CERTIFIED U.S. PUBLIC LAND SURVEY MONUMENT RECORD

INSTRUCTIONS: THIS RECORD FORM SHOULD BE USED WHEN COORDINATES ARE PROVIDED FOR A PUBLIC LAND SURVEY CORNER AND SHALL INCLUDE ALL OF THE FOLLOWING ELEMENTS (A-D)

(A) IDENTIFY THE CORNER BY REFERENCE TO THE U.S. PUBLIC LAND SURVEY SYSTEM IN DIAGRAM AT RIGHT

● = CORNER MONUMENT



(B) COORDINATES:

GEOGRAPHIC (Degrees Minutes Seconds)

LATITUDE: 43° 39' 11.3920" N

LONGITUDE: 90° 39' 40.7977" W

ELLIPSOID HT (m): _____

DATUM: NAD 1983 (2007)

GEOID03 ADJ: -33.454

ORTHOMETRIC HT: _____

VERNON COUNTY (U.S. FEET)

Coord Quality (+/-)

NORTHING (Y): 184449.830 _____

EASTING (X): 762291.393 _____

GPS METHOD USED TO COMPUTE COORDINATES (check as applicable)

- RTK Observations Static Baselines OPUS-RS Solution OPUS-S Solution
 Combination of GPS Observations & Conventional Procedures
 Single Angle Measurement Closed Traverse Loop

Was a Least Squares Adjustment Used to Compute Coordinates? Yes / No

BASE CONTROL USED FOR COORDINATE COMPUTATION

Station Name	Station Coordinates	Date/Time
<u>OPUS Sta - TS 80</u>	<u>43° 39' 09.1210" N 90° 38' 33.6149" W</u>	<u>03/02/2011 - 13:12</u>
	<u>N - 184227.675 E - 767231.248</u>	
<u>Same</u>		<u>03/11/2011 - 10:32</u>

(C) REASON FOR COORDINATES SUBMITTAL (check one)

- Being Filed With a New U.S. PLS Monument Record
 To Correct the Coordinates Listed on a Previously Filed PLS Monument Record
 To Provide Coordinates for Previously Filed PLS Monument Record without Coordinates
 To Provide Supplemental Coordinates for a Previously Filed PLS Monument Record

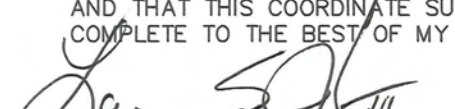
MOST RECENT PLS MONUMENT RECORD DATE: 17 February 2000

R.L.S. WHO CREATED MOST RECENT PLS MONUMENT RECORD: Curtis J Cummer

(D) AGENT(S) PERFORMING GPS OBSERVATIONS & COORDINATE COMPUTATION

- 1) LAURENCE E JOHNS III
 2) _____

I, LAURENCE E JOHNS III RLS 2804, REGISTERED LAND SURVEYOR, HEREBY CERTIFY THAT THE COORDINATES PROVIDED ON THIS RECORD WERE DETERMINED BY ME OR UNDER MY DIRECTION AND CONTROL AND THAT THIS COORDINATE SUBMISSION FORM IS CORRECT AND COMPLETE TO THE BEST OF MY KNOWLEDGE AND BELIEF.


 Laurence E Johns III RLS 2804
 Eagle Ridge Surveying, LLC
 PO Box 213
 Wilton, Wisconsin
 11 March 2011

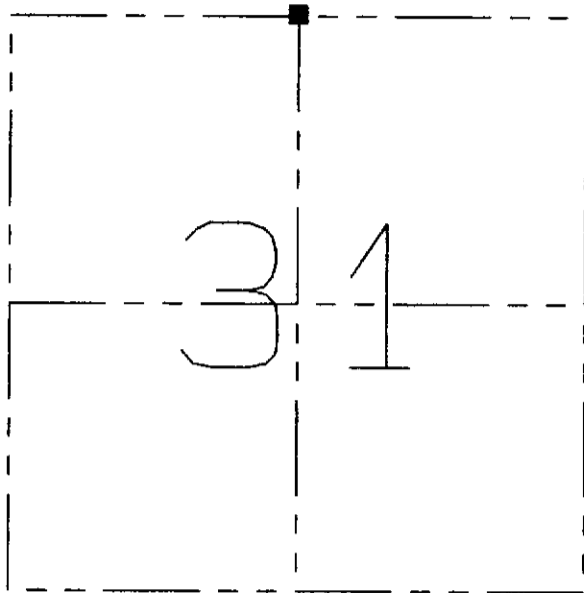


Vernon County Certified U.S. Public Land Survey Monument Record

I, Curtis J. Cummer, certify that the corner location shown on this record was determined by me, and that this U.S. Public Land Survey Monument Record is correct and complete to the best of my knowledge and belief.



C. J. Cummer 2/17/00
Curtis J. Cummer Date



Section 31 T 14 N. R 2 ~~XX~~ W
TOWN OF Whitestown

WISCONSIN COORDINATE SYSTEM (SOUTH ZONE)

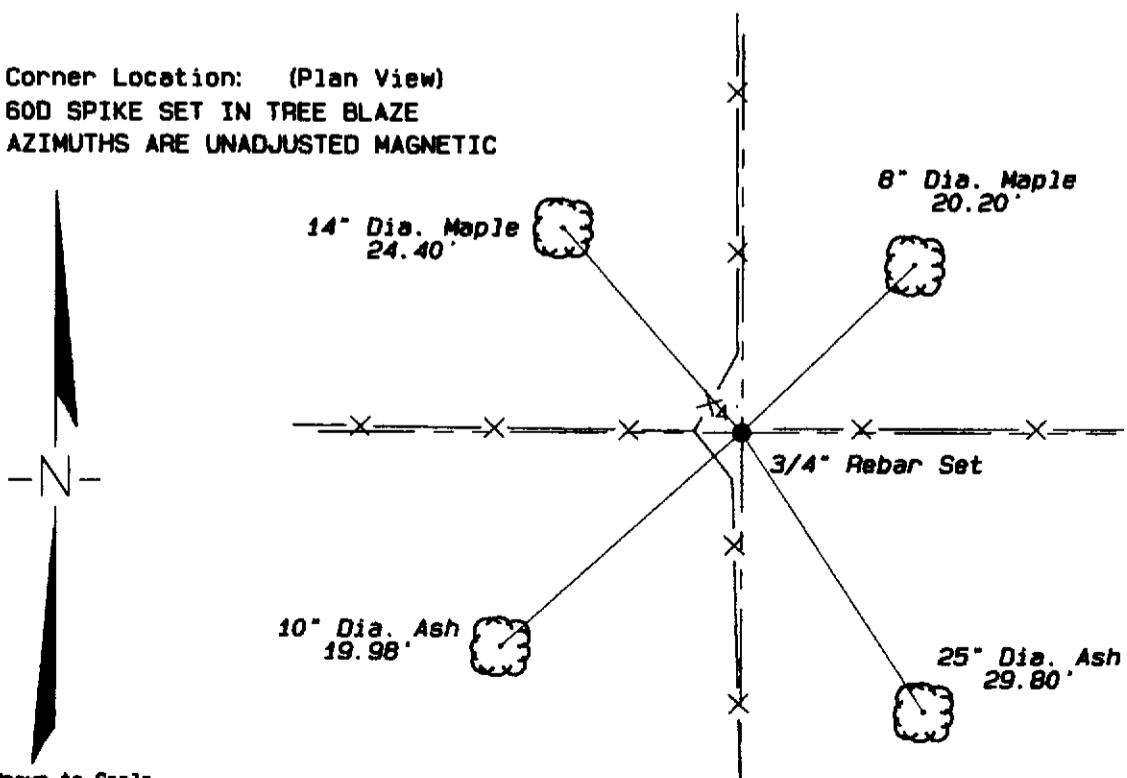
NORTHING:
EASTING:
ELEVATION:

The monument was ~~FOUND~~ / PLACED

Record evidence, Monument evidence, Occupational evidence, Testimonial evidence, or any other material evidence considered:

No original evidence was found. Corner was established at occupation.

Corner Location: (Plan View)
60D SPIKE SET IN TREE BLAZE
AZIMUTHS ARE UNADJUSTED MAGNETIC



Not Drawn to Scale