

RECEIVED
 FEB 12 2004
 BY: *B. Johnson*

VERNON COUNTY
 CERTIFIED U.S. PUBLIC LAND SURVEY MONUMENT RECORD

INSTRUCTIONS: THIS RECORD SHALL SHOW THE LOCATION OF THE CORNER AND SHALL INCLUDE ALL OF THE FOLLOWING ELEMENTS (A-1)

(A) IDENTIFY THE CORNER BY REFERENCE TO THE U.S. PUBLIC LAND SURVEY SYSTEM

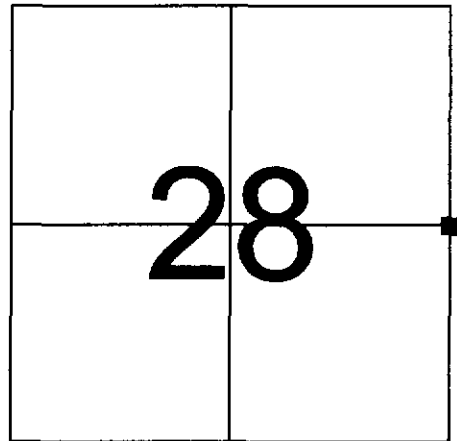
■ = CORNER MONUMENT RESTORED

WITNESSES TO CORNER LOCATION:

- 1) PATRICK J. DEDERICH
- 2) JOHN E. DEDERICH

VERNON COUNTY COORDINATES

NORTHING: 187,055.51
 EASTING: 775,443.20



SECTION 28, TOWN 14 NORTH, RANGE 2 WEST

(B) DESCRIBE ANY RECORD EVIDENCE, MONUMENT EVIDENCE, OCCUPATIONAL EVIDENCE, TESTIMONIAL EVIDENCE OR ANY OTHER MATERIAL EVIDENCE YOU CONSIDERED, AND WHETHER THE MONUMENT WAS FOUND OR PLACED.

FOUND ARMY CORPS OF ENGINEERS MONUMENT DATED 1985.

(C) IN THE PLAN VIEW DRAWING BELOW, PROVIDE REFERENCE TIES TO AT LEAST 4 WITNESS MONUMENTS OR, IF THE LOCATION IS WITHIN A MUNICIPALITY, TO AT LEAST 2 WITNESS MONUMENTS. (WITNESS MONUMENTS SHALL BE MADE OF CONCRETE, NATURAL STONE, IRON, OR OTHER EQUALLY DURABLE MATERIAL.) DESCRIBE WITNESS MONUMENTS.

(D) SHOW A PLAN VIEW DRAWING, DEPICTING THE RELEVANT MONUMENTS AND REFERENCE TIES, WHICH IS SUFFICIENTLY DETAILED TO ENABLE ACCURATE RELOCATION OF THE CORNER MONUMENT IF IT IS DISTURBED.

LEDGEND

- 3/4" X 24" IRON ROD SET
 - ARMY CORPS OF ENGINEERS MONUMENT
- AZIMUTHS ARE MAGNETIC

NOT TO SCALE

28

27



ALL WOODS

GOV'T SIGN SET 1' +/-

AZ. 13°
24.72 FT.

AZ. 89°
34.26 FT.

EAST FENCE IS DOWN

AZ. 219°
29.14 FT.

AZ. 152°
30.00 FT.

BEARINGS ARE BASED ON THE VERNON COUNTY COORDINATE SYSTEM NAD 83/91

28

27

(E) DESCRIBE ANY MATERIAL DISCREPANCY BETWEEN THE LOCATION OF THE CORNER AS RESTORED OR REESTABLISHED AND THE LOCATION OF THAT CORNER AS PREVIOUSLY RESTORED OR REESTABLISHED BY DISTANCE AND DIRECTION. SHOW THE DISCREPANCY ON THE PLAN VIEW DRAWING UNDER (D), ABOVE. SHOW THE DISTANCES BETWEEN THE CORNER AS PREVIOUSLY RESTORED OR REESTABLISHED AND (1) THE CORNER AS RESTORED OR REESTABLISHED, AND (2) TO AT LEAST 2 OF THE WITNESS MONUMENTS AS SHOWN ON THE DRAWING IN (D), ABOVE.

(F) WAS THE CORNER RESTORED THROUGH ACCEPTANCE OF (1) AN OBLITERATED EVIDENCE LOCATION, OR (2) A FOUND PERPETUATED LOCATION?

(2) A FOUND PERPETUATED LOCATION.

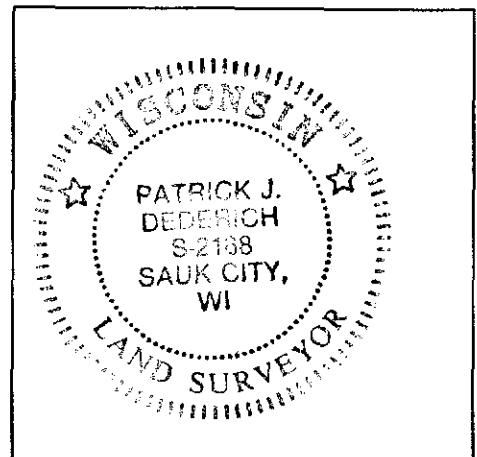
(G & H) WAS THE CORNER REESTABLISHED THROUGH LOST CORNER PROPORTIONATE METHODS? IF SO SHOW THE METHOD, INCLUDING THE DIRECTIONS AND DISTANCES TO OTHER PUBLIC LAND SURVEY CORNERS USED AS EVIDENCE OR USED FOR PROPORTIONING IN DETERMINING THE CORNER LOCATION.

NO.

AFFIX LAND SURVEYOR SEAL

(I) I, PATRICK J. DEDERICH CERTIFY THAT THE LOCATION SHOWN ON THIS RECORD WAS DETERMINED BY ME OR UNDER MY DIRECTION AND CONTROL AND THAT THIS U.S. PUBLIC LAND SURVEY MONUMENT RECORD IS CORRECT AND COMPLETE TO THE BEST OF MY KNOWLEDGE AND BELIEF.

 2/11/2004
SIGNATURE DATE

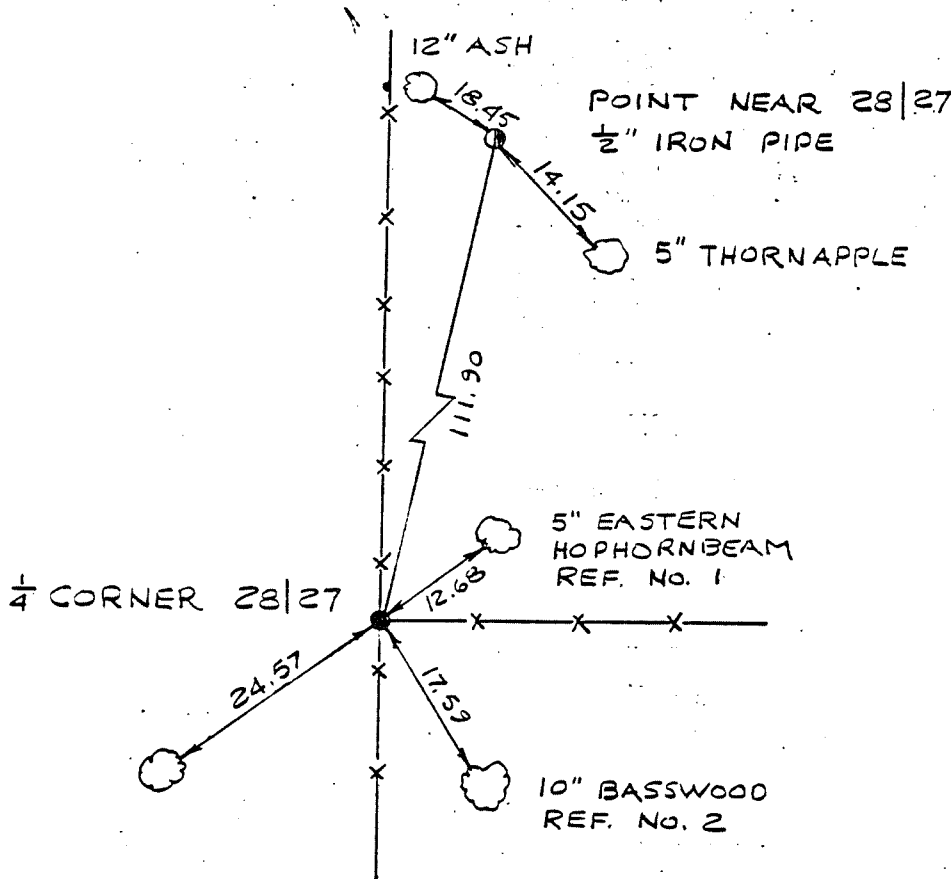


COUNTRY U. S. A.		TYPE OF MARK 2" IRON PIPE WITH BRASS CAP		STATION 1/4 CORNER 28 27		T. 14 N. R. 2 W.	
LOCALITY LA FARGE, WIS.		STAMPING ON MARK 28 27		AGENCY (CAST IN MARKS) CORPS OF ENGRS.		ELEVATION (FT) (M)	
LATITUDE		LONGITUDE		DATUM		DATUM	
(NORTHING)(EASTING) (FT)	(EASTING)(NORTHING) (FT)	GRID AND ZONE		ESTABLISHED BY (AGENCY)			
605,709.29	1,838,179.73	WIS. (SOUTH)		CHICAGO DISTRICT			
(NORTHING)(EASTING) (M)	(EASTING)(NORTHING) (M)	GRID AND ZONE		DATE		ORDER	
				1965			

TO OBTAIN GRID AZIMUTH, ADD TO THE GEODETIC AZIMUTH
 TO OBTAIN GRID AZ. (ADD)(SUB.) TO THE GEODETIC AZIMUTH

OBJECT	AZIMUTH OR DIRECTION (GEODETIC)(GRID) (MAGNETIC)	BACK AZIMUTH	GEOD. DISTANCE (METERS) (FEET)	GRID DISTANCE (METERS) (FEET)
POINT NEAR 28 27	N. 11°-35'-24" E.			111.90
REF. No. 1	N. 53°-38'-54" E.			12.68
REF. No. 2	S. 32°-05'-56" E.			17.59
REF. No. 3	S. 53°-58'-04" W.			24.57

REFERENCE DISTANCES ARE HORIZONTAL & TO NAILS IN TREES. REFERENCE TREES TO 1/4 CORNER ARE BLAZED & SCRIBED T.



SKETCH