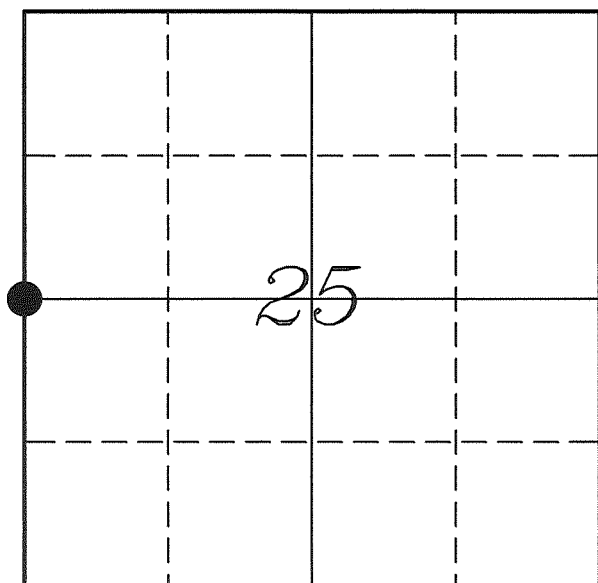

U. S. PUBLIC LAND SURVEY MONUMENT RECORD

SECTION 25, T14N, R2W, TOWN OF WHITESTOWN
VERNON COUNTY, WISCONSIN



LOCATION OF LANDMARK

Crew: Laurence E Johns III
Larry Handschy

Date: 8 July 2011

VERNON COUNTY COORDINATE SYSTEM	
Northing	187135.835
Easting	785938.481
Datum	NAD 1983 (2007)
Elevation	
Datum	
TYPE OF LANDMARK: Army Corps of Engineers (USCE) Monument	
BEARINGS ARE REFERENCED TO: Vernon County Coordinates	

Describe any record evidence, monument evidence, testimonial evidence or any other material evidence you considered and whether the monument was found or restored through acceptance of an obliterated evidence location.

No bearing trees of record were located.

Found the Brass Cap Monument (USCE Mon) in the location as shows by Van Dorpe.

Knower, Older & Van Dorpe all show that this corner was set by proration.

I accepted the USCE Monument as the best available evidence of the original government corner.

Describe or show any material discrepancy between the location of the restored corner and that of the corner previously restored or re-established.

Noah Phelps established this corner in October 1847.

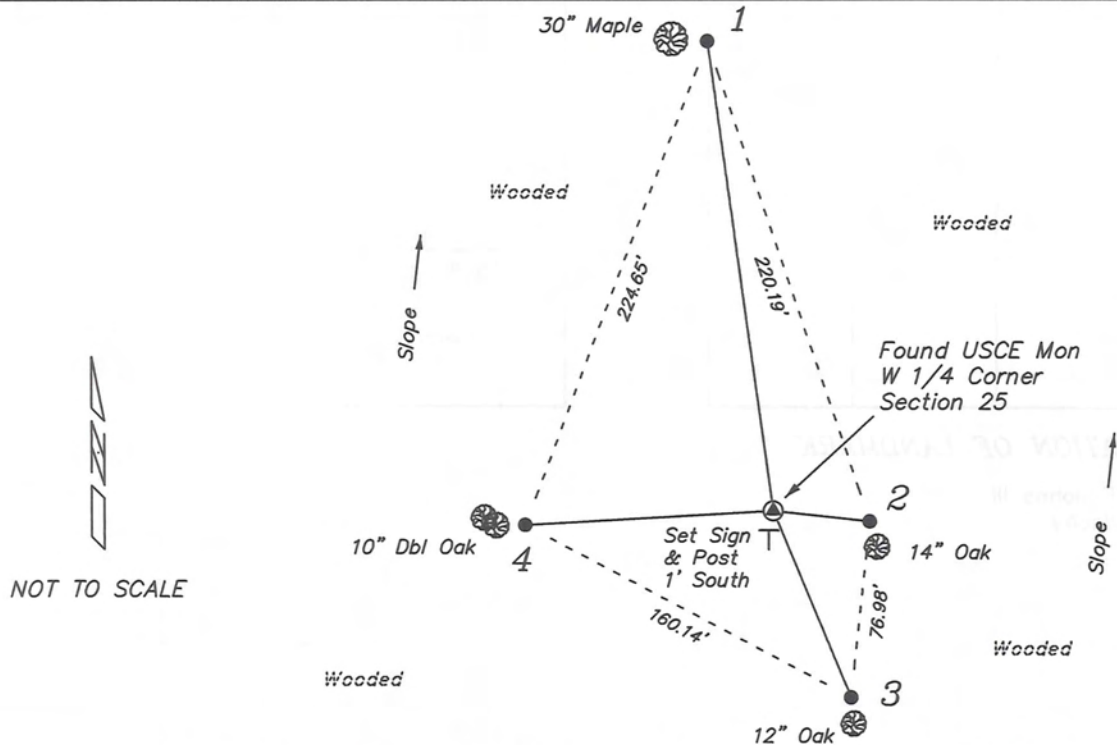
C M Sterling was at this corner, in October 1894, during a survey in Section 24. He shows that he marked two bearing trees.

E J Older was at this corner, in June 1913, during a survey in Section 25. He shows that he found Sterling's corner and marked two bearing trees.

Ralph Van Dorpe was at this corner, in February 1966, during a survey for the US Army Corps of Engineers. He shows he set a 2" Iron Pipe with Brass Cap (USCE Monument) at the equal division.

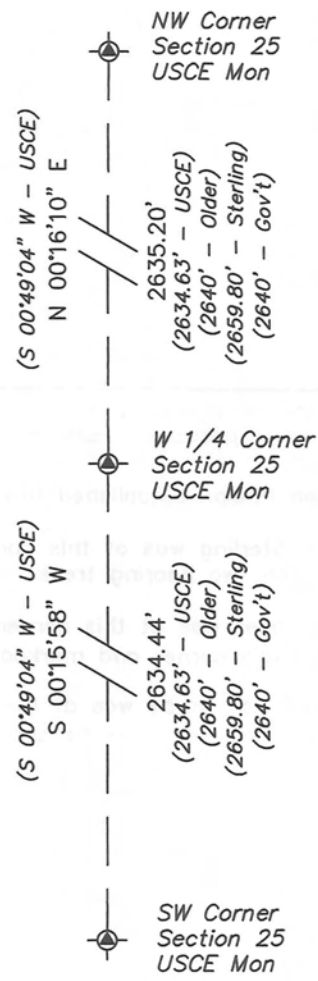
RECORD OF DURABLE WITNESS MONUMENTS

NO	DESCRIPTION	BEARING	DISTANCE
1	Set 3/4" x 18" Iron Rod 1' East of 30" Maple	N 07°49'13" W	206.05'
2	Set 3/4" x 18" Iron Rod 1' North of 14" Oak	S 83°42'00" E	42.20'
3	Set 3/4" x 18" Iron Rod 1' North of 12" Oak	S 22°35'59" E	87.93'
4	Set 3/4" x 18" Iron Rod 1' East of 10" Double Oak	S 86°49'44" W	107.75'

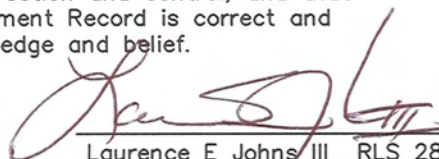


PLAN VIEW DRAWING OF REFERENCE TIES

Map Showing Distance And Direction To Other Public Land Survey Corners Used For Re-Establishing The Corner



I, Laurence E Johns III RLS 2804, Registered Land Surveyor, hereby certify that the corner location shown on this record was determined by me or under my direction and control, and that this U.S. Public Land Survey Monument Record is correct and complete to the best of my knowledge and belief.

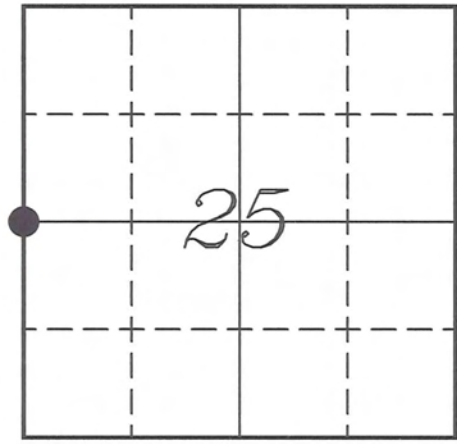

 Laurence E Johns III RLS 2804
 Eagle Ridge Surveying, LLC
 PO Box 213
 Wilton, Wisconsin
 8 July 2011

VERNON COUNTY COORDINATE SUBMISSION FORM
 "As An Addendum To"
VERNON COUNTY
CERTIFIED U.S. PUBLIC LAND SURVEY MONUMENT RECORD

INSTRUCTIONS: THIS RECORD FORM SHOULD BE USED WHEN COORDINATES ARE PROVIDED FOR A PUBLIC LAND SURVEY CORNER AND SHALL INCLUDE ALL OF THE FOLLOWING ELEMENTS (A-D)

(A) IDENTIFY THE CORNER BY REFERENCE TO THE U.S. PUBLIC LAND SURVEY SYSTEM IN DIAGRAM AT RIGHT

● = CORNER MONUMENT



T 14 N, R 2 W

(B) COORDINATES:

GEOGRAPHIC (Degrees Minutes Seconds)

LATITUDE: 43° 39' 37.4497" N

LONGITUDE: 90° 34' 19.0766" W

ELLIPSOID HT (m): _____

DATUM: NAD 1983 (2007)

GEOID03 ADJ: _____

ORTHOMETRIC HT: _____

VERNON COUNTY (U.S. FEET)

Coord Quality (+/-)

NORTHING (Y): 187135.835 _____

EASTING (X): 785938.481 _____

GPS METHOD USED TO COMPUTE COORDINATES (check as applicable)

RTK Observations Static Baselines OPUS-RS Solution OPUS-S Solution

Combination of GPS Observations & Conventional Procedures

Single Angle Measurement Closed Traverse Loop

Was a Least Squares Adjustment Used to Compute Coordinates? Yes / No

BASE CONTROL USED FOR COORDINATE COMPUTATION

Station Name	Station Coordinates	Date/Time
<u>OPUS Station - 9003</u>	<u>43° 39' 49.2750" N 90° 34' 12.3645" W</u>	<u>07/08/2011 - 10:11</u>
	<u>N - 188334.523 E - 786428.848</u>	
<u>Same</u>		<u>07/08/2011 - 16:20</u>

(C) REASON FOR COORDINATES SUBMITTAL (check one)

Being Filed With a New U.S. PLS Monument Record

To Correct the Coordinates Listed on a Previously Filed PLS Monument Record

To Provide Coordinates for Previously Filed PLS Monument Record without Coordinates

To Provide Supplemental Coordinates for a Previously Filed PLS Monument Record

MOST RECENT PLS MONUMENT RECORD DATE:

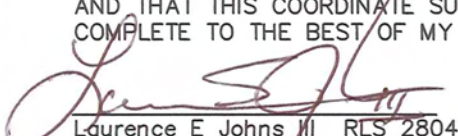
R.L.S. WHO CREATED MOST RECENT PLS MONUMENT RECORD:

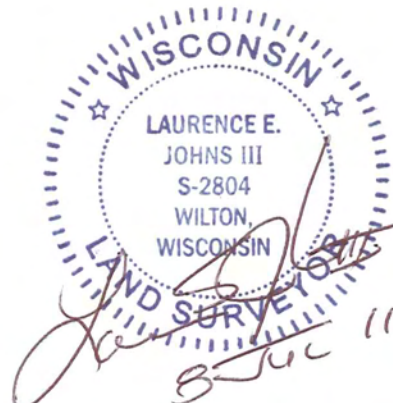
(D) AGENT(S) PERFORMING GPS OBSERVATIONS & COORDINATE COMPUTATION

1) LAURENCE E JOHNS III

2) _____

I, LAURENCE E JOHNS III RLS 2804, REGISTERED LAND SURVEYOR, HEREBY CERTIFY THAT THE COORDINATES PROVIDED ON THIS RECORD WERE DETERMINED BY ME OR UNDER MY DIRECTION AND CONTROL AND THAT THIS COORDINATE SUBMISSION FORM IS CORRECT AND COMPLETE TO THE BEST OF MY KNOWLEDGE AND BELIEF.


 Laurence E Johns III RLS 2804
 Eagle Ridge Surveying, LLC
 PO Box 213
 Wilton, Wisconsin
 8 July 2011

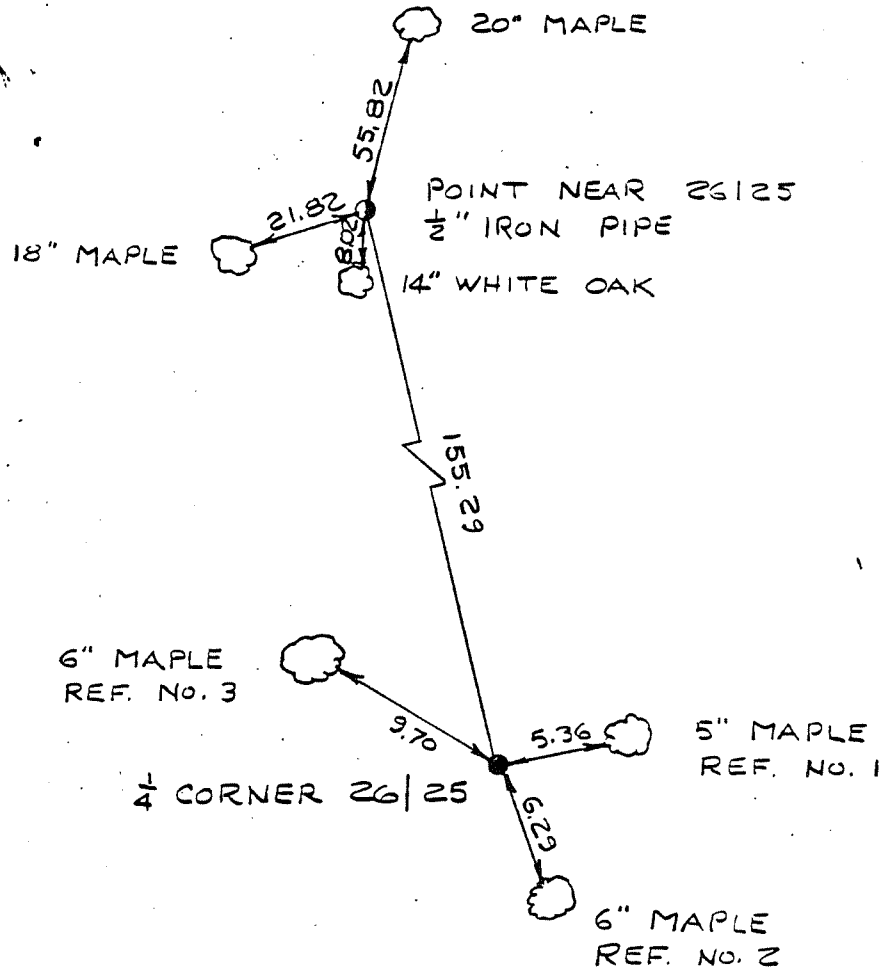


COUNTRY U. S. A.		TYPE OF MARK 2" IRON PIPE WITH BRASS CAP		STATION 1/4 CORNER 26 25		T. 14 N. R. 2 W.	
LOCALITY LA FARGE, WIS.		STAMPING ON MARK 26 25		AGENCY (CAST IN MARKS) CORPS OF ENGRS.		ELEVATION (FT) (ND)	
LATITUDE		LONGITUDE		DATUM		DATUM	
(NORTHING)(EASTING) 605,691.68	(FT) (M)	(EASTING)(NORTHING) 1,848,673.92	(FT) (M)	GRID AND ZONE WIS. (SOUTH)		ESTABLISHED BY (AGENCY) CHICAGO DISTRICT	
(NORTHING)(EASTING)	(FT) (M)	(EASTING)(NORTHING)	(FT) (M)	GRID AND ZONE		DATE 1966	ORDER

TO OBTAIN GRID AZIMUTH, ADD TO THE GEODETIC AZIMUTH
 TO OBTAIN GRID AZ. (ADD)(SUB.) TO THE GEODETIC AZIMUTH

OBJECT	AZIMUTH OR DIRECTION (GEODETIC)(GRID) (MAGNETIC)	BACK AZIMUTH	GEOD. DISTANCE (METERS) (FEET)	GRID DISTANCE (METERS) (FEET)
POINT NEAR 26 25	N. 14°-33'-29" W			155.29
REF. No. 1	N. 79°-55'-01" E			5.36
REF. No. 2	S. 18°-16'-59" E			6.29
REF. No. 3	N. 58°-30'-09" W			9.70

REFERENCE DISTANCES ARE HORIZONTAL & TO NAILS IN TREES. REFERENCE TREES TO 1/4 CORNER ARE BLAZED & SCRIBED T_B.



SKETCH