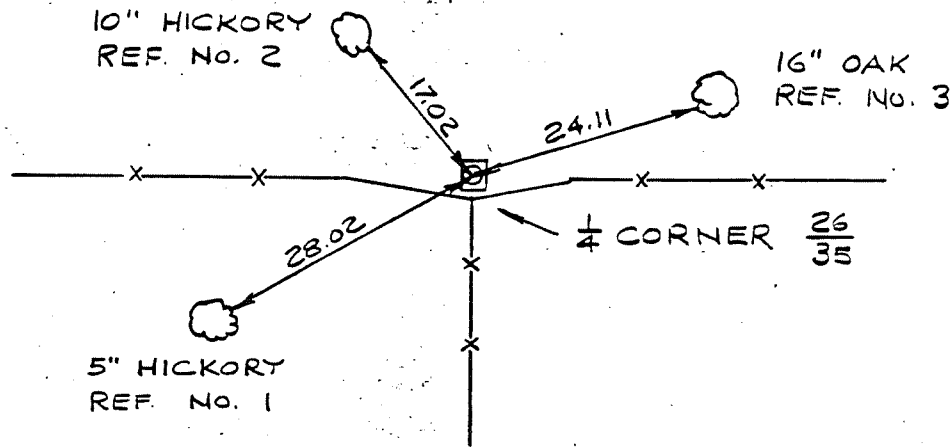


COUNTRY U. S. A.	TYPE OF MARK BRASS CAP SET IN STONE	STATION 1/4 CORNER 26/35	T. 14 N. R. 2 W.
LOCALITY LA FARGE, WIS.	STAMPING ON MARK 26/35	AGENCY (CAST IN MARKS) CORPS OF ENGRS.	ELEVATION (FT) (M)
LATITUDE	LONGITUDE	DATUM	DATUM
(NORTHING)(EASTING) (FT) 603,087.30 (M)	(EASTING)(NORTHING) (FT) 1,846,032.23 (M)	GRID AND ZONE WIS. (SOUTH)	ESTABLISHED BY (AGENCY) CHICAGO DISTRICT
(NORTHING)(EASTING) (FT) (M)	(EASTING)(NORTHING) (FT) (M)	GRID AND ZONE	DATE 1965

TO OBTAIN GRID AZIMUTH, ADD TO THE GEODETIC AZIMUTH
 TO OBTAIN GRID AZ. (ADD)(SUB.) TO THE GEODETIC AZIMUTH

OBJECT	AZIMUTH OR DIRECTION (GEODETIC)(GRID) (MAGNETIC)	BACK AZIMUTH	GEOD. DISTANCE (METERS) (FEET)	GRID DISTANCE (METERS) (FEET)
IRWIN				5091.19
REF. NO. 1	S. 60° 31' 16" W.			28.02
REF. NO. 2	N. 38° 40' 44" W.			17.02
REF. NO. 3	N. 72° 31' 16" E.			24.11

REFERENCE DISTANCES ARE HORIZONTAL & TO NAILS IN TREES. TREES ARE BLAZED & SCRIBED E.



SKETCH