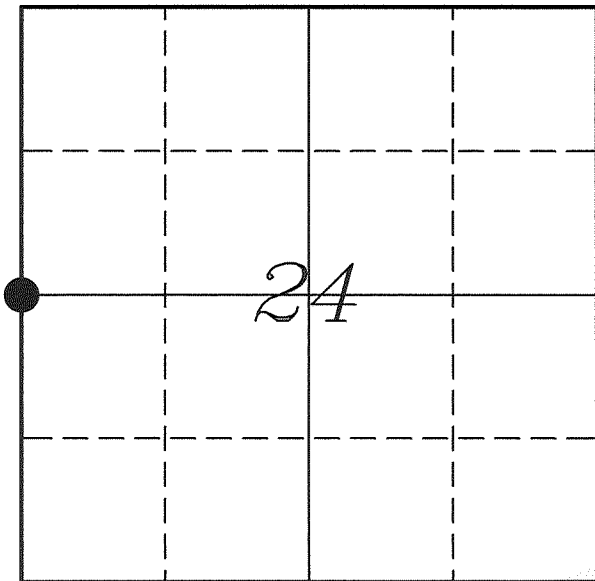


---

# U. S. PUBLIC LAND SURVEY MONUMENT RECORD

---

## SECTION 24, T14N, R2W, TOWN OF WHITESTOWN VERNON COUNTY, WISCONSIN



LOCATION OF LANDMARK

Crew: Laurence E Johns III

Date: 31 July 2011

VERNON COUNTY COORDINATE SYSTEM	
Northing	192405.950
Easting	785911.863
Datum	NAD 1983 (2007)
Elevation	
Datum	
TYPE OF LANDMARK: Army Corps of Engineers (USCE) Monument	
BEARINGS ARE REFERENCED TO:  Vernon County Coordinates	

---

*Describe any record evidence, monument evidence, testimonial evidence or any other material evidence you considered and whether the monument was found or restored through acceptance of an obliterated evidence location.*

No bearing trees of record were located.

I found the USCE Monument placed by Van Dorpe at a 3 way fence corner.

Distances are very close to those of Van Dorpe. I accepted his USCE Monument as the best available evidence of the original government corner. I did not replace the monument with a Lunde because it is a similar monument.

---

*Describe or show any material discrepancy between the location of the restored corner and that of the corner previously restored or re-established.*

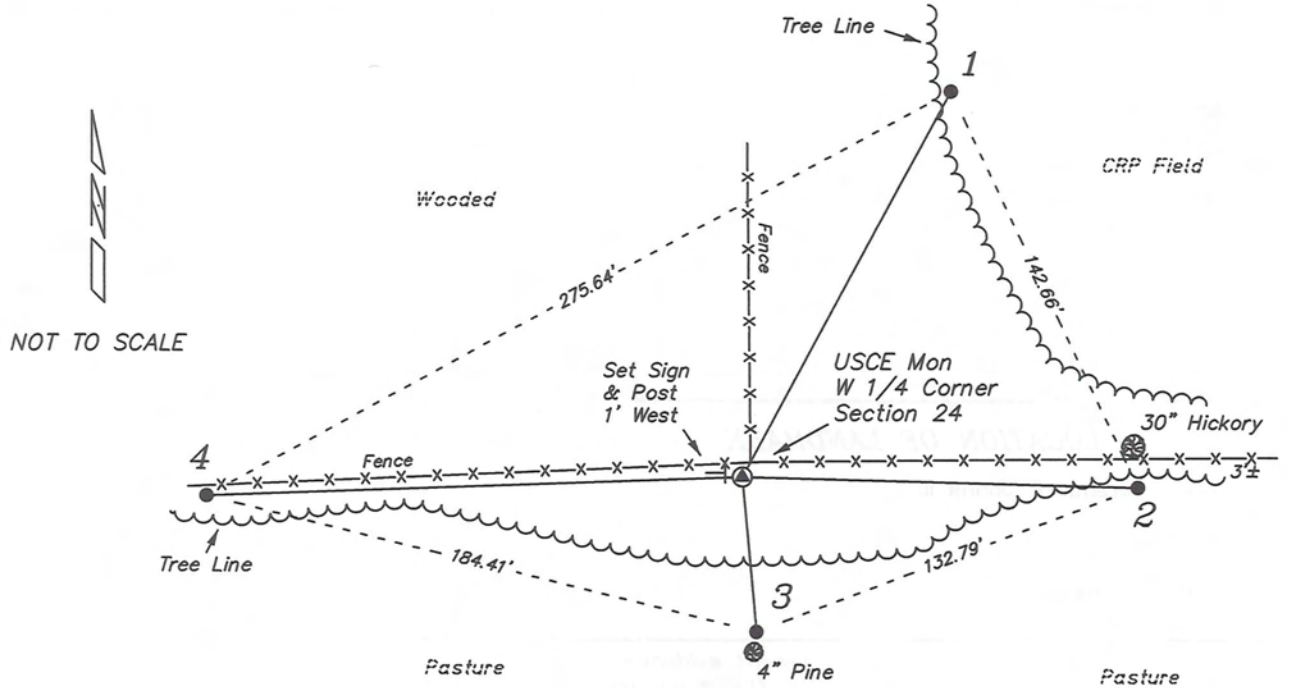
Noah Phelps established this corner in October 1847.

C M Sterling was at this corner, in October 1894, during a survey in Section 24.

Raph Van Dorpe was at this corner, in January 1966, during a survey for the La Farge Dam Project, under the authority of the US Army Corps of Engineers. He placed a 2" Iron Pipe with Brass Cap (USCE Monument) at a three fence corner.

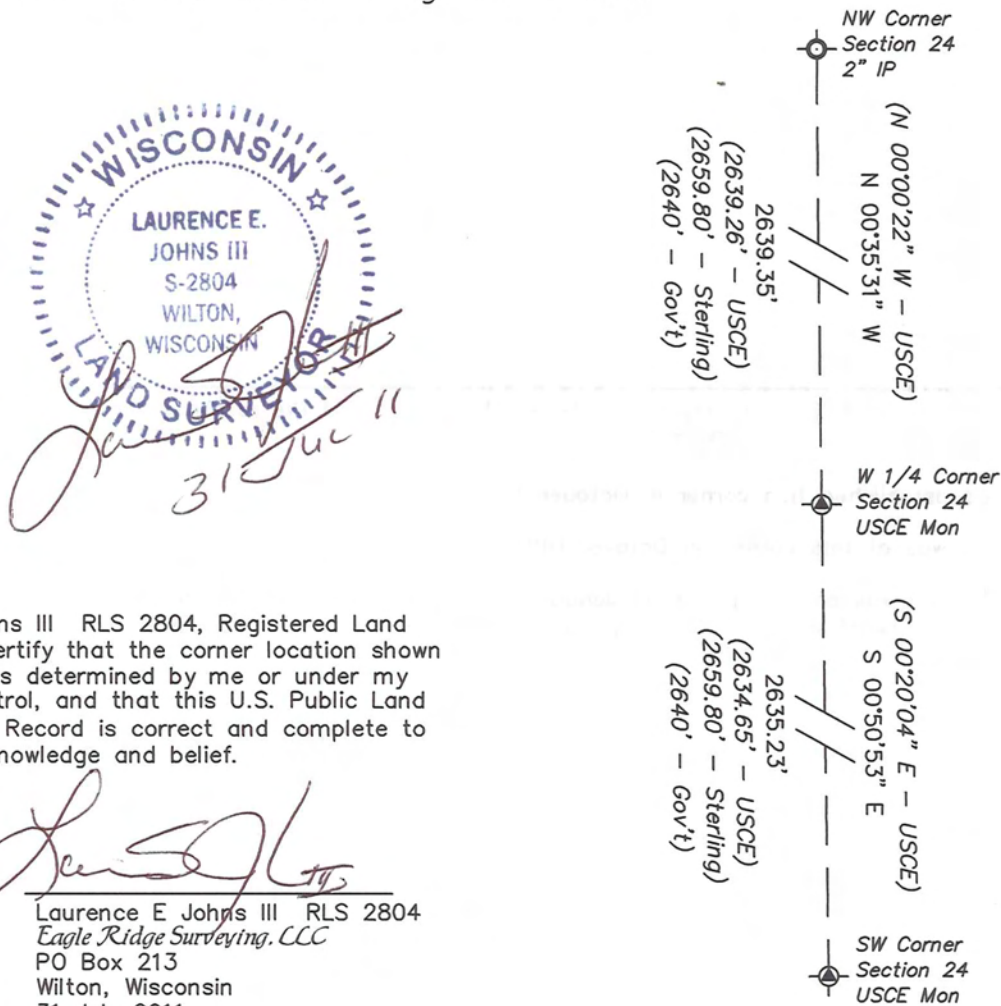
# RECORD OF DURABLE WITNESS MONUMENTS

NO	DESCRIPTION	BEARING	DISTANCE
1	Set 3/4" x 18" Iron Rod Edge of CRP Field	N 28°23'43" E	142.76'
2	Set 3/4" x 18" Iron Rod 3± South of Fence and 30" Hickory	S 88°28'12" E	128.80'
3	Set 3/4" x 18" Iron Rod North Side of 4" Pine	S 05°13'58" E	50.87'
4	Set 3/4" x 18" Iron Rod In Fence	S 88°00'52" W	174.40'

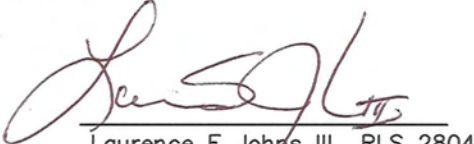


## PLAN VIEW DRAWING OF REFERENCE TIES

Map Showing Distance And Direction To Other Public Land Survey Corners Used For Re-Establishing The Corner



I, Laurence E Johns III RLS 2804, Registered Land Surveyor, hereby certify that the corner location shown on this record was determined by me or under my direction and control, and that this U.S. Public Land Survey Monument Record is correct and complete to the best of my knowledge and belief.

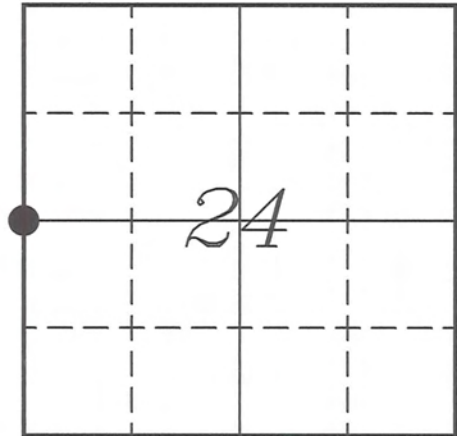
  
 Laurence E Johns III RLS 2804  
 Eagle Ridge Surveying, LLC  
 PO Box 213  
 Wilton, Wisconsin  
 31 July 2011

**VERNON COUNTY COORDINATE SUBMISSION FORM**  
**"As An Addendum To"**  
**VERNON COUNTY**  
**CERTIFIED U.S. PUBLIC LAND SURVEY MONUMENT RECORD**

INSTRUCTIONS: THIS RECORD FORM SHOULD BE USED WHEN COORDINATES ARE PROVIDED FOR A PUBLIC LAND SURVEY CORNER AND SHALL INCLUDE ALL OF THE FOLLOWING ELEMENTS (A-D)

(A) IDENTIFY THE CORNER BY REFERENCE TO THE U.S. PUBLIC LAND SURVEY SYSTEM IN DIAGRAM AT RIGHT

● = CORNER MONUMENT



T 14 N, R 2 W

(B) COORDINATES:

GEOGRAPHIC (Degrees Minutes Seconds)

LATITUDE: 43° 40' 29.4957" N

LONGITUDE: 90° 34' 19.2565" W

ELLIPSOID HT (m): \_\_\_\_\_

DATUM: NAD 1983 (2007)

GEOID03 ADJ: -33.666

ORTHOMETRIC HT: \_\_\_\_\_

VERNON COUNTY (U.S. FEET)

Coord Quality (+/-)

NORTHING (Y): 192405.950 \_\_\_\_\_

EASTING (X): 785911.863 \_\_\_\_\_

GPS METHOD USED TO COMPUTE COORDINATES (check as applicable)

- RTK Observations     Static Baselines     OPUS-RS Solution     OPUS-S Solution  
 Combination of GPS Observations & Conventional Procedures  
 Single Angle Measurement     Closed Traverse Loop

Was a Least Squares Adjustment Used to Compute Coordinates? Yes /  No

BASE CONTROL USED FOR COORDINATE COMPUTATION

Station Name	Station Coordinates	Date/Time
<u>OPUS Station - TS 9001</u>	<u>43° 40' 56.7309" N 90° 34' 45.4831" W</u>	<u>07/29/2011 - 09:37</u>
	<u>N - 195158.964 E - 783977.536</u>	
<u>Same</u>		<u>07/31/2011 - 07:15</u>

(C) REASON FOR COORDINATES SUBMITTAL (check one)

- Being Filed With a New U.S. PLS Monument Record  
 To Correct the Coordinates Listed on a Previously Filed PLS Monument Record  
 To Provide Coordinates for Previously Filed PLS Monument Record without Coordinates  
 To Provide Supplemental Coordinates for a Previously Filed PLS Monument Record

MOST RECENT PLS MONUMENT RECORD DATE:


R.L.S. WHO CREATED MOST RECENT PLS MONUMENT RECORD:

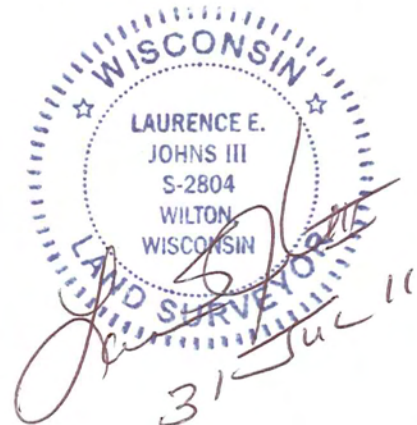
(D) AGENT(S) PERFORMING GPS OBSERVATIONS & COORDINATE COMPUTATION

1) LAURENCE E JOHNS III

2) \_\_\_\_\_

I, LAURENCE E JOHNS III RLS 2804, REGISTERED LAND SURVEYOR, HEREBY CERTIFY THAT THE COORDINATES PROVIDED ON THIS RECORD WERE DETERMINED BY ME OR UNDER MY DIRECTION AND CONTROL AND THAT THIS COORDINATE SUBMISSION FORM IS CORRECT AND COMPLETE TO THE BEST OF MY KNOWLEDGE AND BELIEF.

  
 Laurence E Johns III RLS 2804  
 Eagle Ridge Surveying, LLC  
 PO Box 213  
 Wilton, Wisconsin  
 31 July 2011

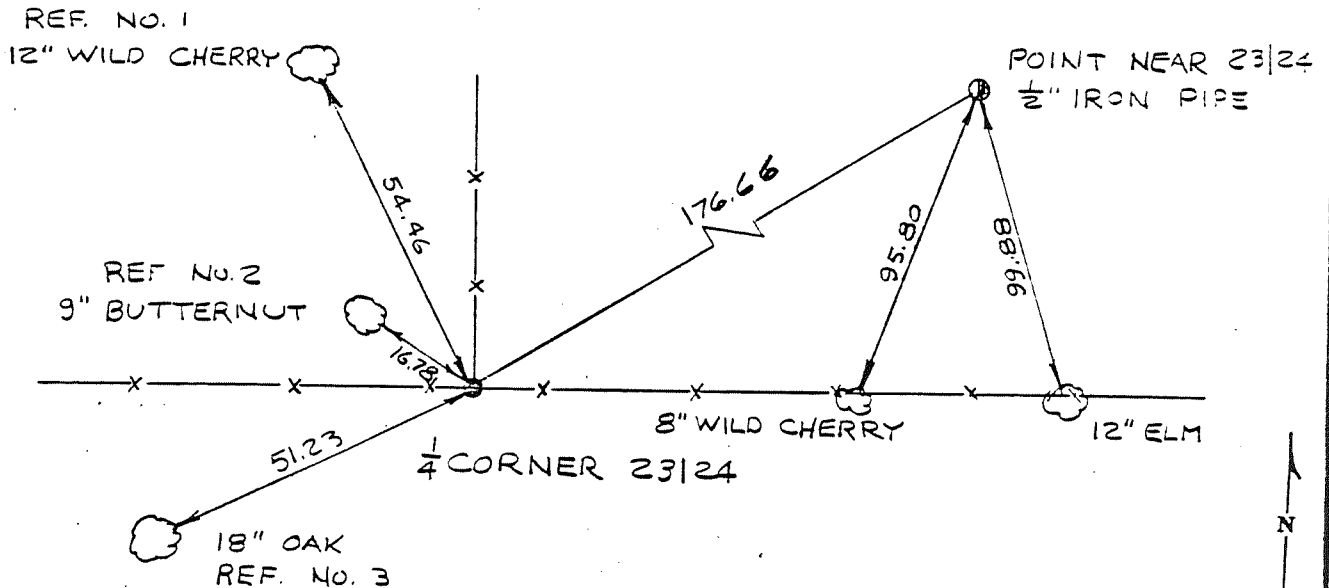


COUNTRY U. S. A.		TYPE OF MARK 2" IRON PIPE WITH BRASS CAP		STATION 1/4 CORNER 23 24 T. 14 N. R. 2 W.	
LOCALITY LA FARGE, WIS.		STAMPING ON MARK 23 24		AGENCY (CAST IN MARKS) CORPS OF ENGRS.	
LATITUDE		LONGITUDE		ELEVATION (FT) (M)	
(NORTHING)(EASTING) (FT)		(EASTING)(NORTHING) (FT)		GRID AND ZONE	
610,960.64 (M)		1,848,696.15 (M)		WIS. (SOUTH)	
(NORTHING)(EASTING) (FT)		(EASTING)(NORTHING) (FT)		ESTABLISHED BY (AGENCY)	
				CHICAGO DISTRICT	
				DATE	
				1965	
				ORDER	

TO OBTAIN GRID AZIMUTH, ADD TO THE GEODETIC AZIMUTH  
 TO OBTAIN GRID AZ. (ADD)(SUB.) TO THE GEODETIC AZIMUTH

OBJECT	AZIMUTH OR DIRECTION (GEODETIC)(GRID) (MAGNETIC)	BACK AZIMUTH	GEOD. DISTANCE		GRID DISTANCE	
			(METERS)	(FEET)	(METERS)	(FEET)
POINT NEAR 23 24	N. 58°-17'-31" E				176.66	
REF No. 1	N. 26°-30' W	} MAGNETIC			54.46	
REF No. 2	N. 54°-00' W.				16.78	
REF No. 3	S 64°-00' W.				51.23	

REFERENCE DISTANCES ARE HORIZONTAL & TO NAILS IN TREES,  
 REFERENCE TREES TO 1/4 CORNER ARE BLAZED & SCRIBED E.



SKETCH