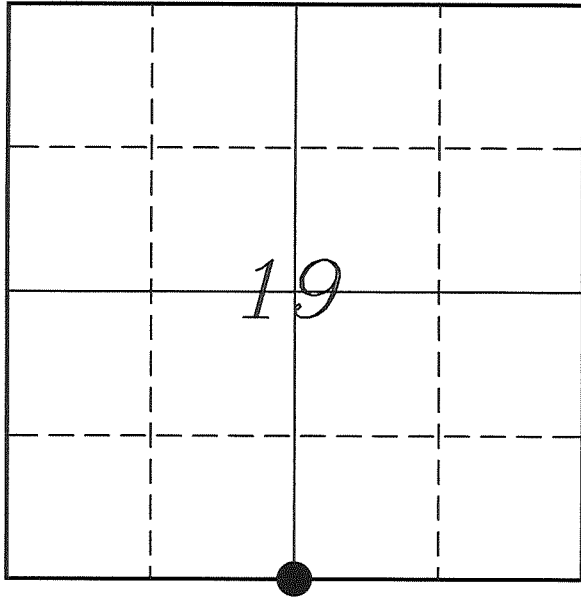


---

# U. S. PUBLIC LAND SURVEY MONUMENT RECORD

---

## SECTION 19, T14N, R2W, TOWN OF WHITESTOWN VERNON COUNTY, WISCONSIN



LOCATION OF LANDMARK

Crew: Laurence E Johns III  
Larry Handschy

Date: 2 March 2011

VERNON COUNTY COORDINATE SYSTEM	
Northing	189585.886
Easting	762222.618
Datum	NAD 1983 (2007)
Elevation	
Datum	
TYPE OF LANDMARK:	
Set Lunde Monument	
BEARINGS ARE REFERENCED TO:	
Vernon County Coordinates	

---

*Describe any record evidence, monument evidence, testimonial evidence or any other material evidence you considered and whether the monument was found or restored through acceptance of an obliterated evidence location.*

Knower's two bearing trees were located to the Northwest. There is only open field in that direction.

Sime calls for an original bearing tree. The bearing tree from the original notes is a 20" Lind Tree at S 5° E and 24 Links (15.84'). The tree that Sime refers to is a 48" Linden Tree at a distance of approximately 15'. He states that he set a 3/4" Iron Rod at the distance called for by the original notes and adjusted for the size of the tree.

The distance to the East is within 2' of the original call. The distance to the West is short by approximately 106', but there is a valley in between that is approximately 300' deep. There may have been a 3 half-chain error in measuring this distance, which would account for the difference.

I have agreed with Sime's statement of this tree being an original bearing tree and therefore his location of this corner. I have accepted his location as the best available evidence of the original government corner and replaced his 3/4" Iron Rod with a Lunde Monument.

---

*Describe or show any material discrepancy between the location of the restored corner and that of the corner previously restored or re-established.*

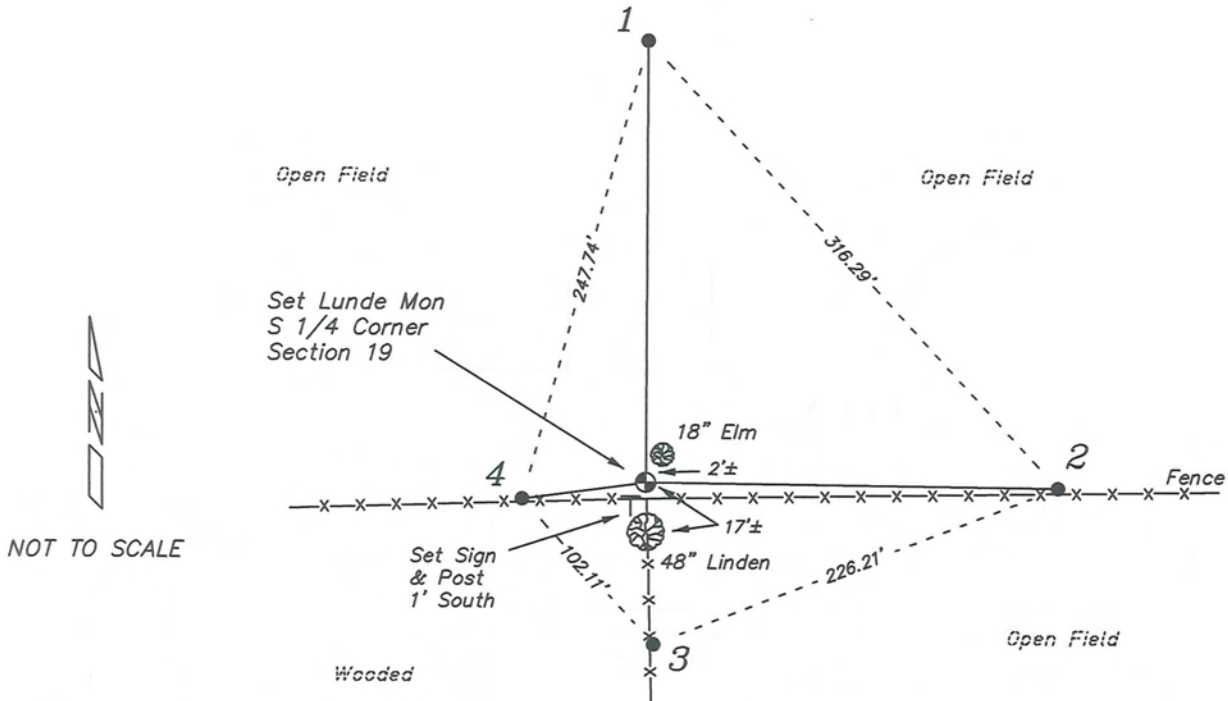
Noah Phelps established this corner in October 1847.

Wm Knower was at this corner, in April 1889, during a survey in Section 19. He shows that he found the government corner and renewed the ties.

Garold Sime was at this corner, in March 1990, during a survey in Section 19. His survey does not show this corner, but it appears that he used it. He prepared a tie sheet of the same date and shows that he set a 3/4" x 24" Iron Bar based on an original bearing tree.

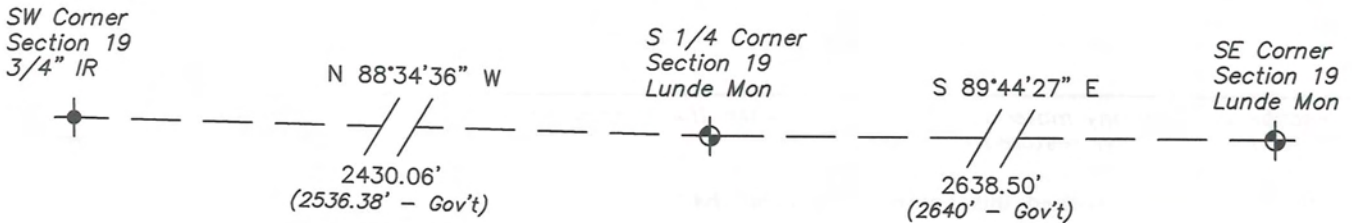
## RECORD OF DURABLE WITNESS MONUMENTS

NO	DESCRIPTION	BEARING	DISTANCE
1	Set 3/4" x 18" Iron Rod At Lone Fence Post in Field	N 00°14'59" E	225.29'
2	Set 3/4" x 18" Iron Rod In Fence	S 87°58'29" E	215.14'
3	Set 3/4" x 18" Iron Rod In Fence	S 02°37'02" E	89.45'
4	Set 3/4" x 18" Iron Rod In Partially Down Fence	S 78°01'54" W	65.87'

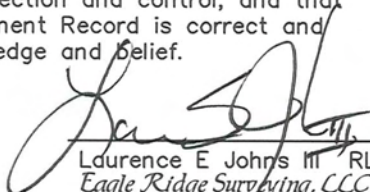


### PLAN VIEW DRAWING OF REFERENCE TIES

Map Showing Distance And Direction To Other Public Land Survey  
Corners Used For Re-Establishing The Corner



I, Laurence E Johns III RLS 2804, Registered Land Surveyor, hereby certify that the corner location shown on this record was determined by me or under my direction and control, and that this U.S. Public Land Survey Monument Record is correct and complete to the best of my knowledge and belief.

  
 Laurence E Johns III RLS 2804  
 Eagle Ridge Surveying, LLC  
 PO Box 213  
 Wilton, Wisconsin  
 7 March 2011

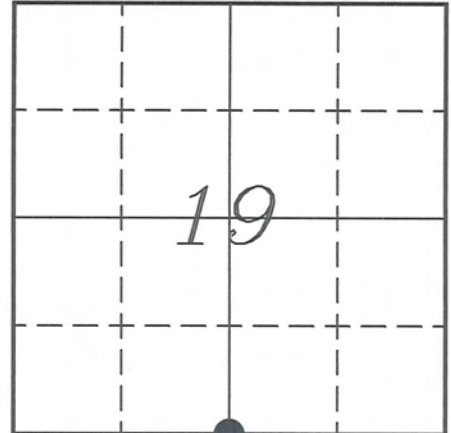


**VERNON COUNTY COORDINATE SUBMISSION FORM**  
 "As An Addendum To"  
**VERNON COUNTY**  
**CERTIFIED U.S. PUBLIC LAND SURVEY MONUMENT RECORD**

INSTRUCTIONS: THIS RECORD FORM SHOULD BE USED WHEN COORDINATES ARE PROVIDED FOR A PUBLIC LAND SURVEY CORNER AND SHALL INCLUDE ALL OF THE FOLLOWING ELEMENTS (A-D)

(A) IDENTIFY THE CORNER BY REFERENCE TO THE U.S. PUBLIC LAND SURVEY SYSTEM IN DIAGRAM AT RIGHT

● = CORNER MONUMENT



(B) COORDINATES:

GEOGRAPHIC (Degrees Minutes Seconds)

LATITUDE: 43° 40' 02.1147" N

LONGITUDE: 90° 39' 41.6308" W

ELLIPSOID HT (m): \_\_\_\_\_

DATUM: NAD 1983 (2007)

GEOID03 ADJ: -33.449

ORTHOMETRIC HT: \_\_\_\_\_

VERNON COUNTY (U.S. FEET)

Coord Quality (+/-)

NORTHING (Y): 189585.886

EASTING (X): 762222.618

GPS METHOD USED TO COMPUTE COORDINATES (check as applicable)

- RTK Observations     Static Baselines     OPUS-RS Solution     OPUS-S Solution  
 Combination of GPS Observations & Conventional Procedures  
 Single Angle Measurement     Closed Traverse Loop

Was a Least Squares Adjustment Used to Compute Coordinates? Yes /  No

BASE CONTROL USED FOR COORDINATE COMPUTATION

Station Name	Station Coordinates	Date/Time
<u>Whitestown GPS</u>	<u>43° 40' 39.9866" N 90° 39' 01.5036" W</u> <u>N - 193425.300 E - 765166.055</u>	<u>03/01/2010 - 14:32</u>
<u>Same</u>	<u>-</u>	<u>03/02/2011 - 10:56</u>

(C) REASON FOR COORDINATES SUBMITTAL (check one)

- Being Filed With a New U.S. PLS Monument Record  
 To Correct the Coordinates Listed on a Previously Filed PLS Monument Record  
 To Provide Coordinates for Previously Filed PLS Monument Record without Coordinates  
 To Provide Supplemental Coordinates for a Previously Filed PLS Monument Record

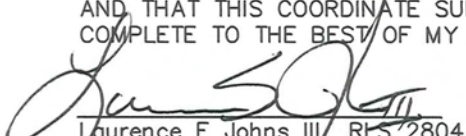
MOST RECENT PLS MONUMENT RECORD DATE: 30 March 1990

R.L.S. WHO CREATED MOST RECENT PLS MONUMENT RECORD: Garold A Sime

(D) AGENT(S) PERFORMING GPS OBSERVATIONS & COORDINATE COMPUTATION

- 1) LAURENCE E JOHNS III  
 2) \_\_\_\_\_

I, LAURENCE E JOHNS III RLS 2804, REGISTERED LAND SURVEYOR, HEREBY CERTIFY THAT THE COORDINATES PROVIDED ON THIS RECORD WERE DETERMINED BY ME, OR UNDER MY DIRECTION AND CONTROL AND THAT THIS COORDINATE SUBMISSION FORM IS CORRECT AND COMPLETE TO THE BEST OF MY KNOWLEDGE AND BELIEF.

  
 Laurence E Johns III, RLS 2804  
 Eagle Ridge Surveying LLC  
 PO Box 213  
 Wilton, Wisconsin  
 7 March 2011



# Government Land Corner Certificate

VERNON County

TYPE OF MONUMENT: Set 3/4"x 24" Rd. iron bar at corner

STATE PLANE COORDINATES: N \_\_\_\_\_  
E \_\_\_\_\_

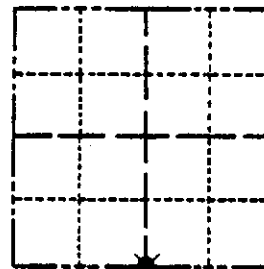
ELEVATION — M.S.L. DATUM: \_\_\_\_\_

THETA ANGLE: \_\_\_\_\_

FIELD BOOK: \_\_\_\_\_ PAGE \_\_\_\_\_

DRAWN BY: Garold A. Sime, R.L.S.

S 1/2 Corner  
 CORNER NO. \_\_\_\_\_  
 SECTION 19  
 TOWN T14N  
 RANGE R2W



LOCATION  
(Indicated by 'X')

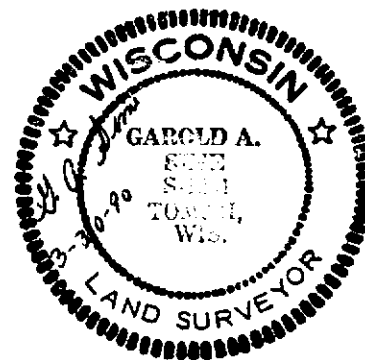
## BASIS FOR MONUMENT LOCATION

Show info such as: History of corner, with reference to Vol. and pg., dates, surveyor; exact description of monument replaced; if location computed, by taped or EDM traverse; landowner remarks, etc. (Use reverse side if necessary)

Wm. H. Knower was at this corner in April of 1889.

I found the Original bearing tree (Linden) just south of the existing fence corner. I monumented this corner using the reference ties given for the corner location.

SEAL:



DATA SHOWN HERE ON  
CERTIFIED CORRECT:

Garold A. Sime  
Registered Land Surveyor

DATE: March 30, 1990

## TIE SKETCH

Show at least four ties, also fence lines, roads, topo, size and type of witness trees and if off road - best way to arrive at corner.

Trees are blazed and distances shown are to a nail set in a hack near the base of the tree.

