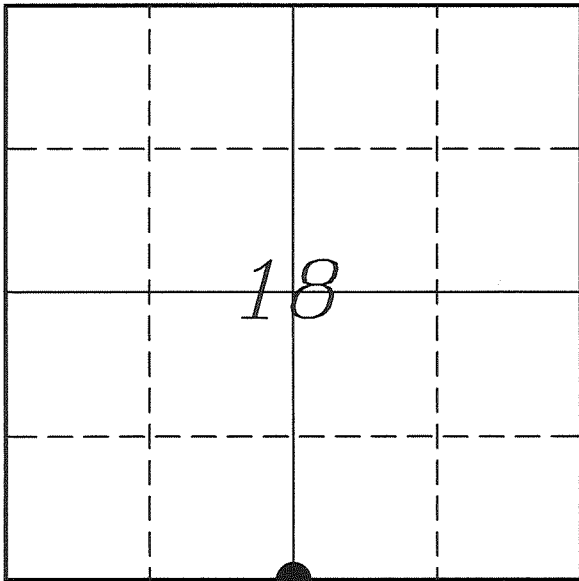

U. S. PUBLIC LAND SURVEY MONUMENT RECORD

SECTION 18, T14N, R2W, TOWN OF WHITESTOWN VERNON COUNTY, WISCONSIN



LOCATION OF LANDMARK

VERNON COUNTY COORDINATE SYSTEM	
Northing	194908.161
Easting	762277.307
Datum	NAD 1983 (2007)
Elevation	
Datum	
TYPE OF LANDMARK:	
Set Lunde Monument	
BEARINGS ARE REFERENCED TO:	
Vernon County Coordinates	

Crew: Laurence E Johns III
Larry Handschy

Date: 17 February 2011

Describe any record evidence, monument evidence, testimonial evidence or any other material evidence you considered and whether the monument was found or restored through acceptance of an obliterated evidence location.

No bearing trees of record by Knower or Phelps were located.

Knower made no measurements to the East or the West from this location.

Only remnants of the fence to the South as shown on Sime's tie sheet were found. Those that were found were of an old style fencing.

Sime's location is of approximately 50' short of the government distance to the West, the deep ravine to the West may account for that difference.

With no contradicting evidence, I accepted the 3/4" Iron Bar set by Sime as the best available evidence of the original government corner and replaced it with a Lunde Monument.

Describe or show any material discrepancy between the location of the restored corner and that of the corner previously restored or re-established.

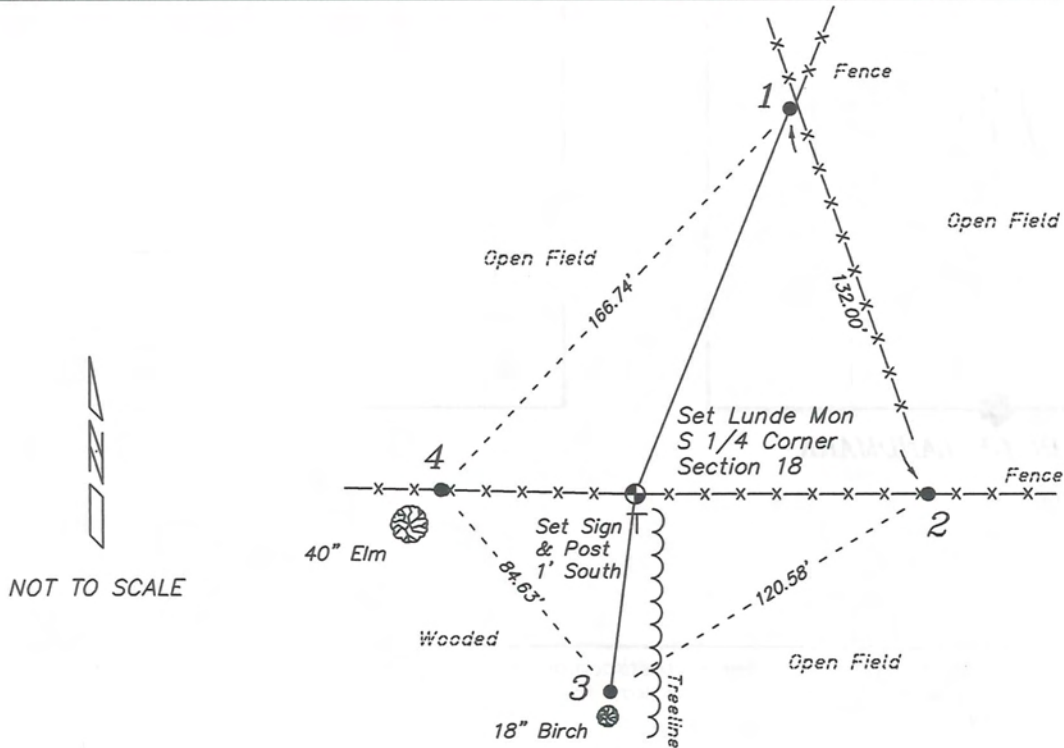
Noah Phelps established this corner in October 1847.

Wm Knower was at this corner, in April 1889, during a survey in Section 19. He shows that he found the government corner and renewed the ties.

Garold Sime was at this corner, in March 1990, during a survey in Section 19. His survey does not show this corner, but it appears that he used it. He prepared a tie sheet of the same date and shows that he set a 3/4" x 24" Iron Bar at occupation.

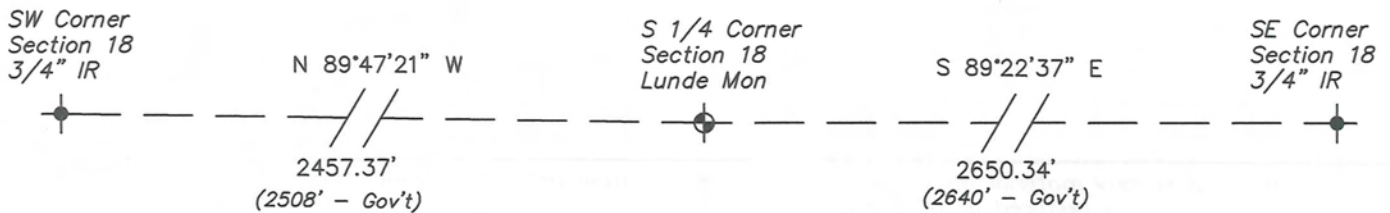
RECORD OF DURABLE WITNESS MONUMENTS

NO	DESCRIPTION	BEARING	DISTANCE
1	Set 3/4" x 18" Iron Rod South Side of Field Fence Post	N 22°04'09" E	134.01'
2	Set 3/4" x 18" Iron Rod In Fence	S 89°52'19" E	94.47'
3	Set 3/4" x 18" Iron Rod 2' North of a 18" Birch	S 07°23'11" W	63.94'
4	Set 3/4" x 18" Iron Rod In Fence - 6' NE of a 40" Elm	N 88°38'18" W	62.56'

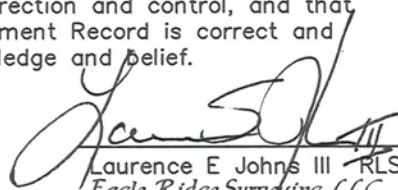


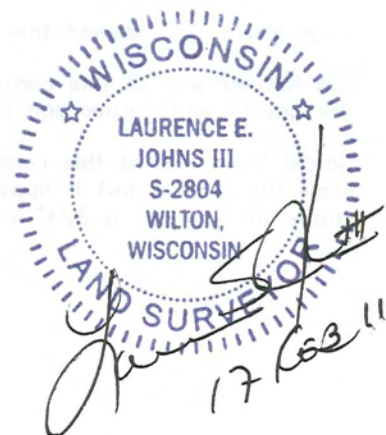
PLAN VIEW DRAWING OF REFERENCE TIES

Map Showing Distance And Direction To Other Public Land Survey Corners Used For Re-Establishing The Corner



I, Laurence E Johns III RLS 2804, Registered Land Surveyor, herby certify that the corner location shown on this record was determined by me or under my direction and control, and that this U.S. Public Land Survey Monument Record is correct and complete to the best of my knowledge and belief.


 Laurence E Johns III RLS 2804
 Eagle Ridge Surveying, LLC
 PO Box 213
 Wilton, Wisconsin
 17 February 2011

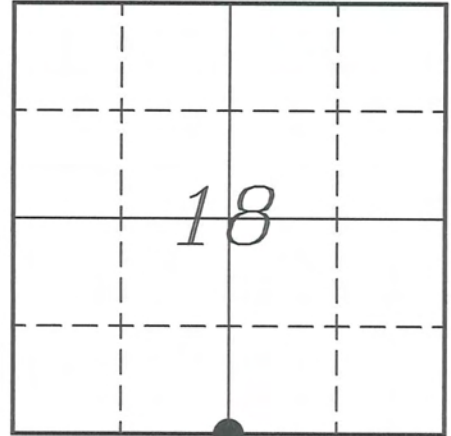


VERNON COUNTY COORDINATE SUBMISSION FORM
 "As An Addendum To"
VERNON COUNTY
CERTIFIED U.S. PUBLIC LAND SURVEY MONUMENT RECORD

INSTRUCTIONS: THIS RECORD FORM SHOULD BE USED WHEN COORDINATES ARE PROVIDED FOR A PUBLIC LAND SURVEY CORNER AND SHALL INCLUDE ALL OF THE FOLLOWING ELEMENTS (A-D)

(A) IDENTIFY THE CORNER BY REFERENCE TO THE U.S. PUBLIC LAND SURVEY SYSTEM IN DIAGRAM AT RIGHT

● = CORNER MONUMENT



(B) COORDINATES:

GEOGRAPHIC (Degrees Minutes Seconds)

LATITUDE: 43° 40' 54.6744" N

LONGITUDE: 90° 39' 40.7805" W

ELLIPSOID HT (m): _____

DATUM: NAD 1983 (2007)

GEOID03 ADJ: -33.445

ORTHOMETRIC HT: _____

VERNON COUNTY (U.S. FEET)

Coord Quality (+/-)

NORTHING (Y): 194908.161 _____

EASTING (X): 762277.307 _____

GPS METHOD USED TO COMPUTE COORDINATES (check as applicable)

- RTK Observations Static Baselines OPUS-RS Solution OPUS-S Solution
 Combination of GPS Observations & Conventional Procedures
 Single Angle Measurement Closed Traverse Loop

Was a Least Squares Adjustment Used to Compute Coordinates? Yes / No

BASE CONTROL USED FOR COORDINATE COMPUTATION

Station Name	Station Coordinates	Date/Time
<u>OPUS STA - WHIT</u>	<u>43° 41' 33.8967" N 90° 40' 00.4621" W</u>	<u>12/16/2011 - 13:54</u>
	<u>N - 198877.737 E - 760825.380</u>	
<u>Same</u>		<u>02/17/2011 - 12:56</u>

(C) REASON FOR COORDINATES SUBMITTAL (check one)

- Being Filed With a New U.S. PLS Monument Record
 To Correct the Coordinates Listed on a Previously Filed PLS Monument Record
 To Provide Coordinates for Previously Filed PLS Monument Record without Coordinates
 To Provide Supplemental Coordinates for a Previously Filed PLS Monument Record

MOST RECENT PLS MONUMENT RECORD DATE: 30 March 1990

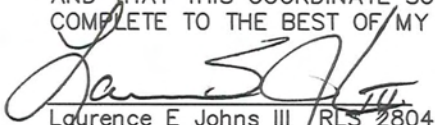
R.L.S. WHO CREATED MOST RECENT PLS MONUMENT RECORD: Garold A Sime

(D) AGENT(S) PERFORMING GPS OBSERVATIONS & COORDINATE COMPUTATION

1) LAURENCE E JOHNS III

2) _____

I, LAURENCE E JOHNS III RLS 2804, REGISTERED LAND SURVEYOR, HEREBY CERTIFY THAT THE COORDINATES PROVIDED ON THIS RECORD WERE DETERMINED BY ME OR UNDER MY DIRECTION AND CONTROL AND THAT THIS COORDINATE SUBMISSION FORM IS CORRECT AND COMPLETE TO THE BEST OF MY KNOWLEDGE AND BELIEF.


 Laurence E Johns III RLS 2804
 Eagle Ridge Surveying, LLC
 PO Box 213
 Wilton, Wisconsin
 17 February 2011

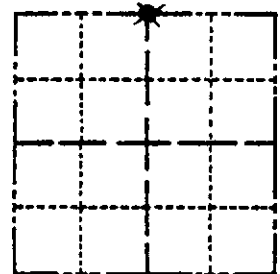


MAY 14 1990

Government Land Corner Certificate

VERNON County
 TYPE OF MONUMENT: Set 3/4"x 24" Rd. iron bar at corner
 STATE PLANE COORDINATES: N _____
 E _____
 ELEVATION — M.S.L. DATUM: _____
 THETA ANGLE: _____
 FIELD BOOK: _____ PAGE _____
 DRAWN BY: Garold A. Sime, R.L.S.

NE Corner
 CORNER NO. _____
 SECTION 19
 TOWN T14N
 RANGE R2W



LOCATION
(Indicated by 'X')

BASIS FOR MONUMENT LOCATION

Show info such as: History of corner, with reference to Vol. and pg., dates, surveyor; exact description of monument replaced; if location computed, by taped or EDM traverse; landowner remarks, etc. (Use reverse side if necessary)

Wm. H. Knower was at this corner in April of 1889.
 I accepted the existing fence corner as the best available evidence for the corner location.

SEAL:



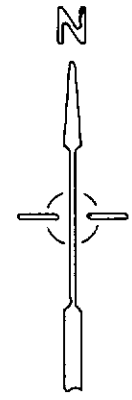
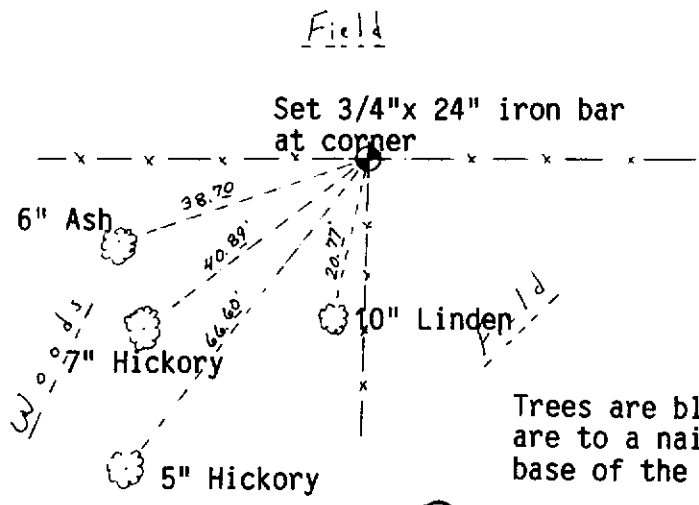
DATA SHOWN HERE ON
 CERTIFIED CORRECT:

Garold A. Sime
 Registered Land Surveyor

DATE: March 30, 1990

TIE SKETCH

Show at least four ties, also fence lines, roads, topo, size and type of witness trees and if off road - best way to arrive at corner.



Trees are blazed and distances shown are to a nail set in a hack near the base of the tree.