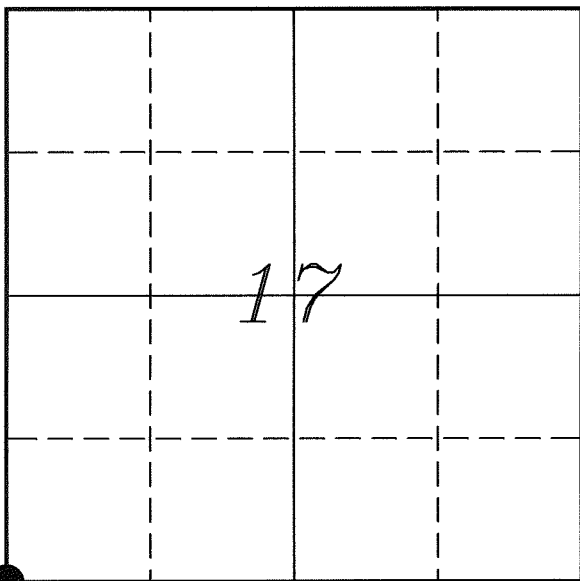

U. S. PUBLIC LAND SURVEY MONUMENT RECORD

SECTION 17, T14N, R2W, TOWN OF WHITESTOWN VERNON COUNTY, WISCONSIN



LOCATION OF LANDMARK

Crew: Laurence E Johns III
Larry Handschy

Date: 15 September 2010

VERNON COUNTY COORDINATE SYSTEM	
Northing	194879.344
Easting	764927.493
Datum	NAD 1983 (2007)
Elevation	
Datum	
TYPE OF LANDMARK:	
Existing 3/4" Iron Rod	
BEARINGS ARE REFERENCED TO:	
Vernon County Coordinates	

Describe any record evidence, monument evidence, testimonial evidence or any other material evidence you considered and whether the monument was found or restored through acceptance of an obliterated evidence location.

I found the 3/4" Iron Rod set by Sime along with the ties.

His tie sheet indicates that he set the corner by using occupation and that it fit distances shown by Knower in Section 19.

Without any contradicting evidence I accepted the 3/4" Iron Rod as the best available evidence of the original government corner and renewed the ties for the corner.

Since the corner was in the center of the roadway, I did not replace the current monument with a Lunde Monument.

Describe or show any material discrepancy between the location of the restored corner and that of the corner previously restored or re-established.

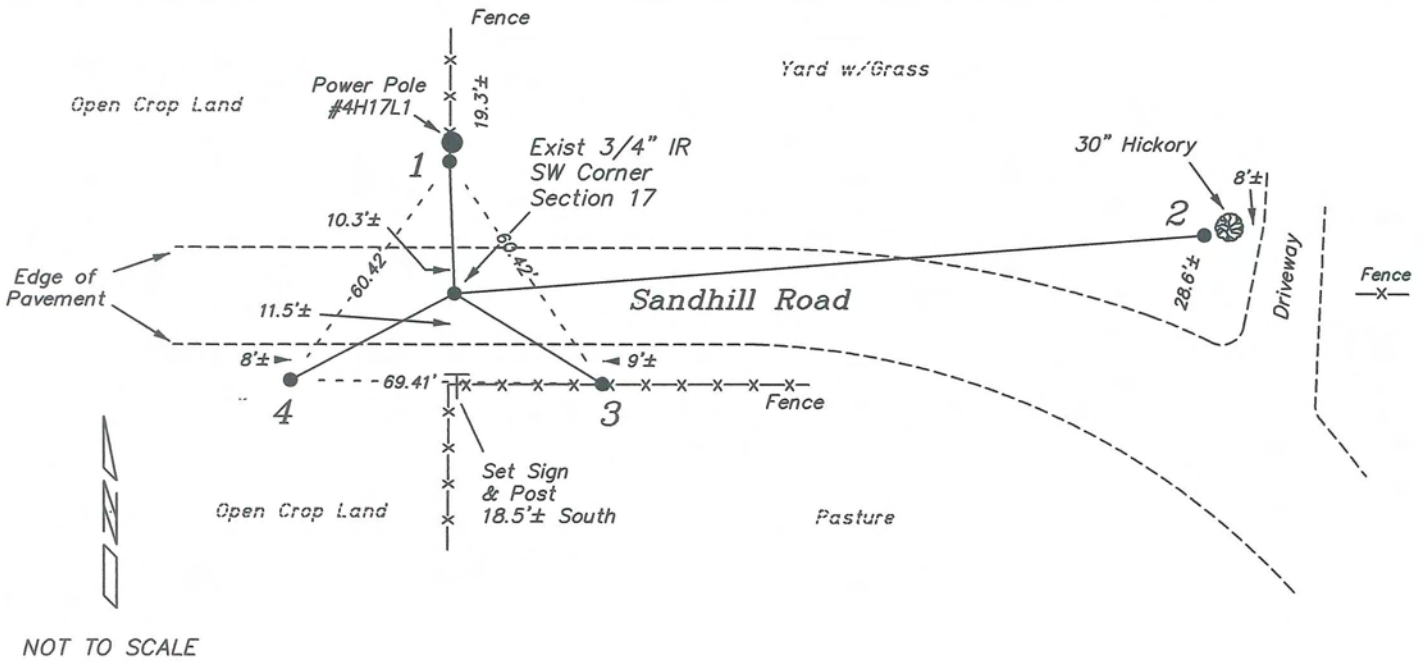
Noah Phelps established this corner in October 1847.

Wm Knower was at this corner, in April 1889, during a survey in Sections 19 & 20. He shows on his survey that he found the government corner.

Garold Sime was at this corner, in March 1990, during a survey in Section 19. He re-establishes the corner, sets a 3/4" Iron Rod in the center of Sandhill Road and prepares a tie sheet.

RECORD OF DURABLE WITNESS MONUMENTS

NO	DESCRIPTION	BEARING	DISTANCE
1	Set 3/4" x 18" Iron Rod South Side of Power Pole #4H17L1	N 02°10'57" W	29.59'
2	Set 3/4" x 18" Iron Rod 1' West of 30" Hickory	N 85°34'09" E	218.05'
3	Existing 3/4" Iron Rod	S 58°09'28" E	38.66' (38.73')
4	Existing 3/4" Iron Rod In Pasture Fence	S 61°45'03" W	42.67' (41.44')



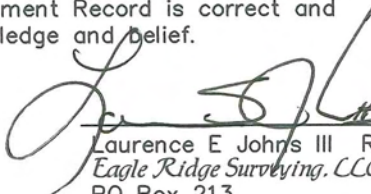
PLAN VIEW DRAWING OF REFERENCE TIES

Map Showing Distance And Direction To Other Public Land Survey
Corners Used For Re-Establishing The Corner

None.



I, Laurence E Johns III RLS 2804, Registered Land Surveyor, hereby certify that the corner location shown on this record was determined by me or under my direction and control, and that this U.S. Public Land Survey Monument Record is correct and complete to the best of my knowledge and belief.

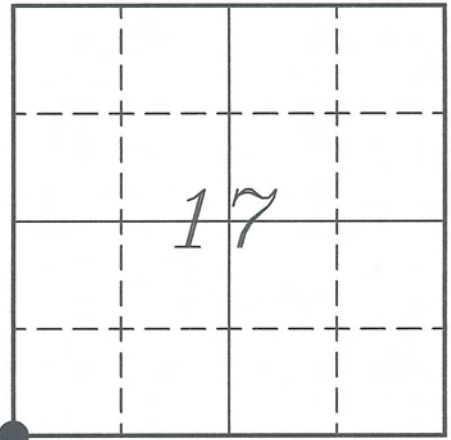

 Laurence E Johns III RLS 2804
 Eagle Ridge Surveying, LLC
 PO Box 213
 Wilton, Wisconsin
 17 September 2010

VERNON COUNTY COORDINATE SUBMISSION FORM
"As An Addendum To"
VERNON COUNTY
CERTIFIED U.S. PUBLIC LAND SURVEY MONUMENT RECORD

INSTRUCTIONS: THIS RECORD FORM SHOULD BE USED WHEN COORDINATES ARE PROVIDED FOR A PUBLIC LAND SURVEY CORNER AND SHALL INCLUDE ALL OF THE FOLLOWING ELEMENTS (A-D)

(A) IDENTIFY THE CORNER BY REFERENCE TO THE U.S. PUBLIC LAND SURVEY SYSTEM IN DIAGRAM AT RIGHT

● = CORNER MONUMENT



(B) COORDINATES:

GEOGRAPHIC (Degrees Minutes Seconds)

LATITUDE: 43° 40' 54.3498" N
 LONGITUDE: 90° 39' 04.7183" W
 ELLIPSOID HT (m): _____
 DATUM: NAD 1983 (2007)
 GEOID03 ADJ: -33.470
 OTHROMETRIC HT: _____

VERNON COUNTY (U.S. FEET)

Coord Quality (+/-)

NORTHING (Y): 194879.344
 EASTING (X): 764927.493

GPS METHOD USED TO COMPUTE COORDINATES (check as applicable)

- RTK Observations Static Baselines OPUS-RS Solution OPUS-S Solution
 Combination of GPS Observations & Conventional Procedures
 Single Angle Measurement Closed Traverse Loop

Was a Least Squares Adjustment Used to Compute Coordinates? Yes / No

BASE CONTROL USED FOR COORDINATE COMPUTATION

Station Name	Station Coordinates	Date/Time
<u>OPUS T002</u>	<u>43° 41' 19.4430" N 90° 38' 33.1190" W</u>	<u>09/15/2010 - 16:21</u>
	<u>N - 197424.084 E - 767245.351</u>	
<u>Same</u>		<u>09/01/2010 - 12:00</u>

(C) REASON FOR COORDINATES SUBMITTAL (check one)

- Being Filed With a New U.S. PLS Monument Record
 To Correct the Coordinates Listed on a Previously Filed PLS Monument Record
 To Provide Coordinates for Previously Filed PLS Monument Record without Coordinates
 To Provide Supplemental Coordinates for a Previously Filed PLS Monument Record

MOST RECENT PLS MONUMENT RECORD DATE:

R.L.S. WHO CREATED MOST RECENT PLS MONUMENT RECORD:

(D) AGENT(S) PERFORMING GPS OBSERVATIONS & COORDINATE COMPUTATION

- 1) LAURENCE E JOHNS III
 2) _____

I, LAURENCE E JOHNS III RLS 2804, REGISTERED LAND SURVEYOR, HEREBY CERTIFY THAT THE COORDINATES PROVIDED ON THIS RECORD WERE DETERMINED BY ME OR UNDER MY DIRECTION AND CONTROL AND THAT THIS COORDINATE SUBMISSION FORM IS CORRECT AND COMPLETE TO THE BEST OF MY KNOWLEDGE AND BELIEF.

Laurence E Johns III RLS 2804
 Eagle Ridge Surveying, LLC
 PO Box 213
 Wilton, Wisconsin
 17 September 2010



MAY 1 1990

Government Land Corner Certificate

VERNON County

TYPE OF MONUMENT: Set 3/4" x 24" Rd. iron bar

STATE PLANE COORDINATES: N _____
E _____

ELEVATION — M.S.L. DATUM: _____

THETA ANGLE: _____

FIELD BOOK: _____ PAGE _____

DRAWN BY: Garold A. Sime, R.L.S.

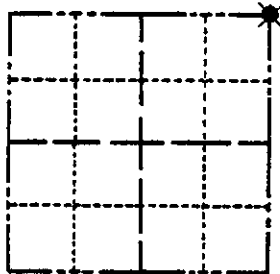
NE Corner

CORNER NO. _____

SECTION 19

TOWN T14N

RANGE R2W



LOCATION
(Indicated by 'X')

BASIS FOR MONUMENT LOCATION

Show info such as: History of corner, with reference to Vol. and pg., dates, surveyor; exact description of monument replaced; if location computed, by taped or EDM traverse; landowner remarks, etc. (Use reverse side if necessary)

SEAL:



Wm. H. Kowner was at this corner in April of 1889.

I accepted the intersection of the centerline of Sandhill Road with the existing north-south fence line as the corner location. This location fits Mr. Kowner's information very well.

DATA SHOWN HERE ON
CERTIFIED CORRECT:

Garold A. Sime
Registered Land Surveyor

DATE: March 30, 1990

TIE SKETCH

Show at least four ties, also fence lines, roads, topo, size and type of witness trees and if off road - best way to arrive at corner.

