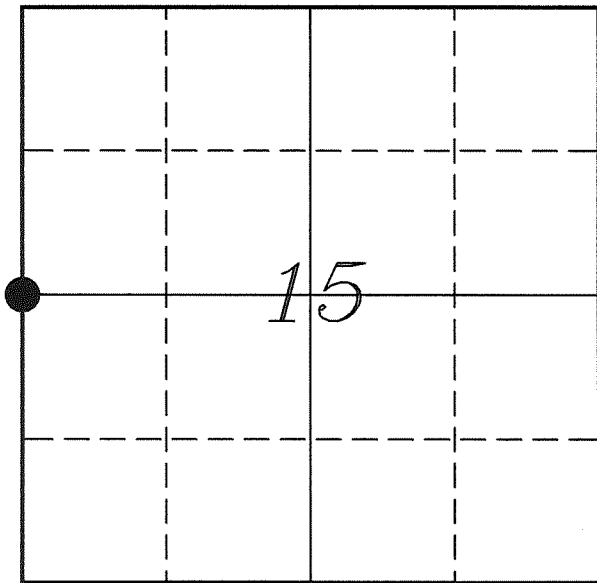


---

U. S. PUBLIC LAND SURVEY MONUMENT RECORD

---

SECTION 15, T14N, R2W, TOWN OF WHITESTOWN  
VERNON COUNTY, WISCONSIN



LOCATION OF LANDMARK

Crew: Laurence E Johns III  
Larry Handschy

Date: 6 August 2009

VERNON COUNTY COORDINATE SYSTEM	
Northing	197559.803
Easting	775474.457
Datum	NAD 1983 (2007)
Elevation	
Datum	
TYPE OF LANDMARK:	
Army Corps of Engineers Monument	
BEARINGS ARE REFERENCED TO:	
Vernon County Coordinates	

---

Describe any record evidence, monument evidence, testimonial evidence or any other material evidence you considered and whether the monument was found or restored through acceptance of an obliterated evidence location.

Found the brass capped USCE monument set by R Van Dorpe.

Accepted this location as the best available location of the original government corner.

---

Describe or show any material discrepancy between the location of the restored corner and that of the corner previously restored or re-established.

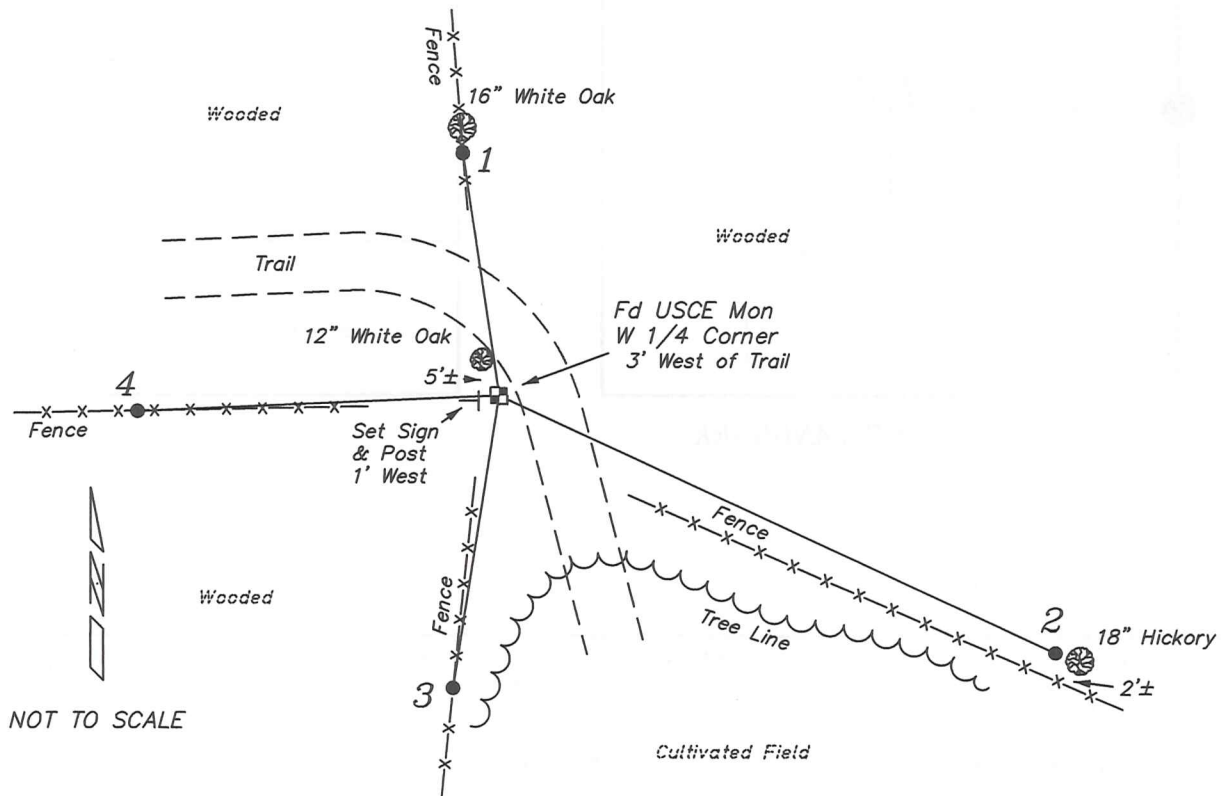
Noah Phelps established this corner in October 1847.

Ralph Van Dorpe, Illinois Surveyor, was here in February 1966, surveying for the US Army Corps of Engineers. He placed a 2" pipe with brass cap at this corner.

Steve Solberg was here, in August 1999, during a survey for the Ho Chunk Nation. He indicates that he found a 2" brass capped monument.

## RECORD OF DURABLE WITNESS MONUMENTS

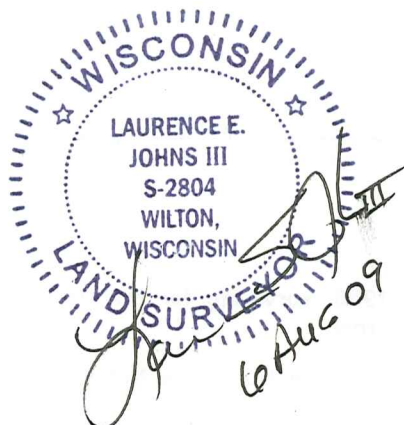
NO	DESCRIPTION	BEARING	DISTANCE
1	Set 3/4" x 18" Iron Rod In Fence - 1' South of 16" White Oak	N 08°20'13" W	42.51'
2	Set 3/4" x 18" Iron Rod 1' West of 18" Hickory	S 65°12'49" E	106.27'
3	Set 3/4" x 18" Iron Rod In Fence Line	S 08°57'35" W	51.25'
4	Set 3/4" x 18" Iron Rod In Fence Line	S 87°32'07" W	62.73'



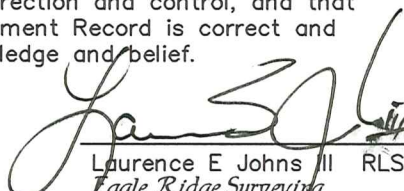
### PLAN VIEW DRAWING OF REFERENCE TIES

Map Showing Distance And Direction To Other Public Land Survey Corners Used For Re-Establishing The Corner

None



I, Laurence E Johns III RLS 2804, Registered Land Surveyor, hereby certify that the corner location shown on this record was determined by me or under my direction and control, and that this U.S. Public Land Survey Monument Record is correct and complete to the best of my knowledge and belief.

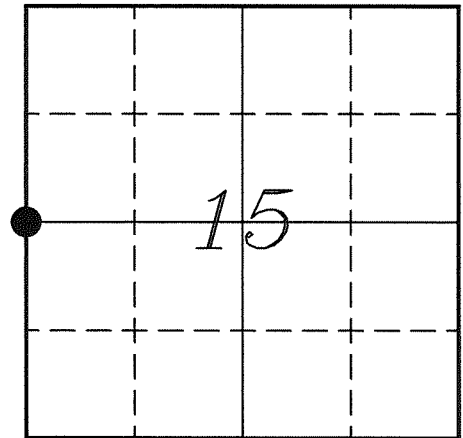
  
 Laurence E Johns III RLS 2804  
 Eagle Ridge Surveying  
 PO Box 213  
 Wilton, Wisconsin  
 6 August 2009

**VERNON COUNTY COORDINATE SUBMISSION FORM**  
 "As An Addendum To"  
**VERNON COUNTY**  
**CERTIFIED U.S. PUBLIC LAND SURVEY MONUMENT RECORD**

INSTRUCTIONS: THIS RECORD FORM SHOULD BE USED WHEN COORDINATES ARE PROVIDED FOR A PUBLIC LAND SURVEY CORNER AND SHALL INCLUDE ALL OF THE FOLLOWING ELEMENTS (A-D)

(A) IDENTIFY THE CORNER BY REFERENCE TO THE U.S. PUBLIC LAND SURVEY SYSTEM IN DIAGRAM AT RIGHT

● = CORNER MONUMENT



(B) COORDINATES:

GEOGRAPHIC (Degrees Minutes Seconds)

LATITUDE: 43° 41' 20.630" N

LONGITUDE: 90° 36' 41.124" W

ELLIPSOID HT (m): \_\_\_\_\_

DATUM: NAD 1983 (2007)

GEOID03 ADJ: -33.573

ORTHOMETRIC HT: \_\_\_\_\_

VERNON COUNTY (U.S. FEET)

Coord Quality (+/-)

NORTHING (Y): 197559.803 \_\_\_\_\_

EASTING (X): 775474.457 \_\_\_\_\_

GPS METHOD USED TO COMPUTE COORDINATES (check as applicable)

- RTK Observations     Static Baselines     OPUS-RS Solution     OPUS-S Solution  
 Combination of GPS Observations & Conventional Procedures

Was a Least Squares Adjustment Used to Compute Coordinates? Yes /  No

BASE CONTROL USED FOR COORDINATE COMPUTATION

Station Name	Station Coordinates	Date/Time
<u>Control Sta - T 01</u>	<u>43° 41' 31.550" N 90° 35' 52.061" W</u> <u>N - 198673.311 E - 779077.057</u>	<u>08/06/2009 - 12:44</u>
<u>Same</u>	_____	<u>08/15/2009 - 12:20</u>

(C) REASON FOR COORDINATES SUBMITTAL (check one)

- Being Filed With a New U.S. PLS Monument Record  
 To Correct the Coordinates Listed on a Previously Filed PLS Monument Record  
 To Provide Coordinates for Previously Filed PLS Monument Record without Coordinates  
 To Provide Supplemental Coordinates for a Previously Filed PLS Monument Record

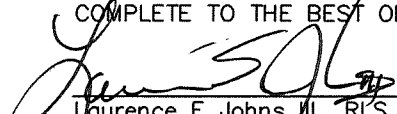
MOST RECENT PLS MONUMENT RECORD DATE:

R.L.S. WHO CREATED MOST RECENT PLS MONUMENT RECORD:

(D) AGENT(S) PERFORMING GPS OBSERVATIONS & COORDINATE COMPUTATION

- 1) LAURENCE E JOHNS III  
 2) \_\_\_\_\_

I, LAURENCE E JOHNS III RLS 2804, REGISTERED LAND SURVEYOR, HEREBY CERTIFY THAT THE COORDINATES PROVIDED ON THIS RECORD WERE DETERMINED BY ME OR UNDER MY DIRECTION AND CONTROL AND THAT THIS COORDINATE SUBMISSION FORM IS CORRECT AND COMPLETE TO THE BEST OF MY KNOWLEDGE AND BELIEF.

  
 Laurence E Johns III RLS 2804  
 Eagle Ridge Surveying  
 PO Box 213  
 Wilton, Wisconsin  
 6 August 2009

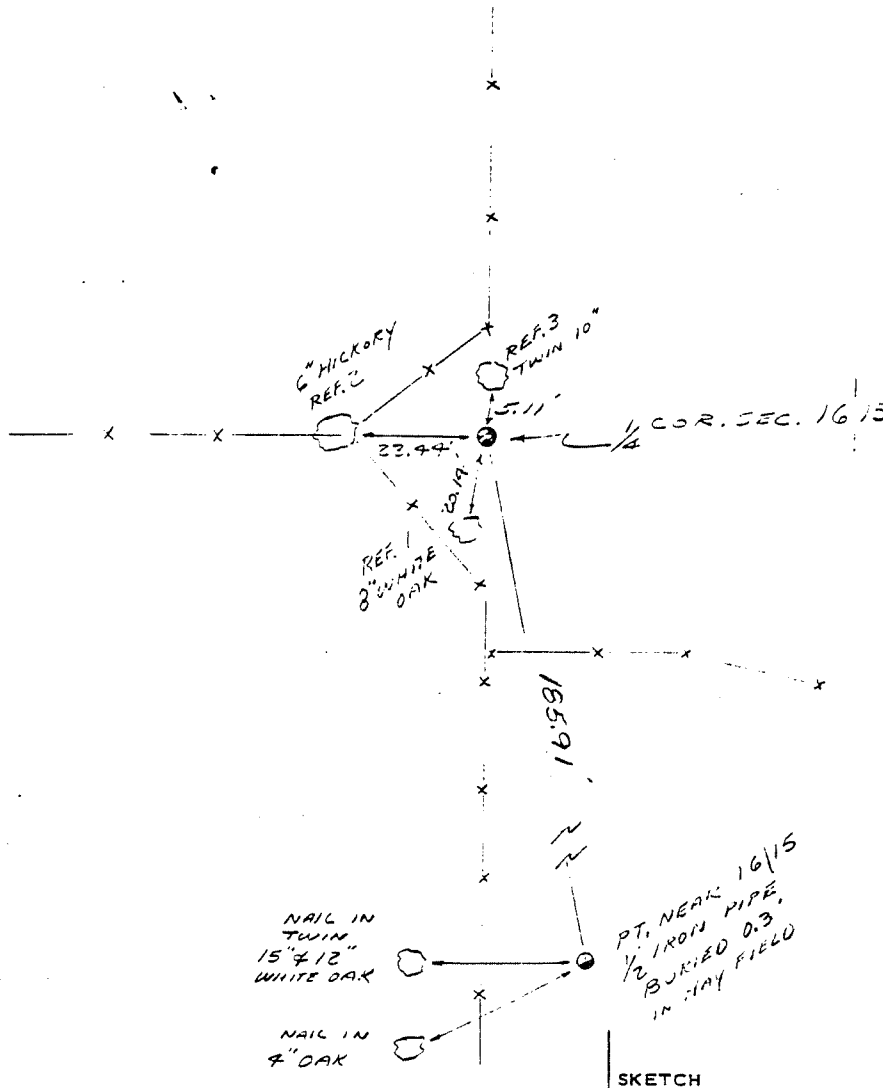


COUNTRY <i>U.S.A.</i>		TYPE OF MARK <i>2" IRON PIPE BRASS CAP</i>		STATION <i>1/4 COR. SEC. 16/15 T14N R2W</i>	
LOCALITY <i>LA FARGE, WIS.</i>		STAMPING ON MARK <i>16/15</i>		AGENCY (CAST IN MARKS) <i>CORPS OF ENGRS.</i>	ELEVATION (FT.) (M)
LATITUDE		LONGITUDE		DATUM	DATUM
(NORTHING)(EASTING) (FT.) (M)	<i>616, 212.20</i>	(EASTING)(NORTHING) (FT.) (M)	<i>1, 838, 308.79</i>	GRID AND ZONE <i>WIS. (SOUTH)</i>	ESTABLISHED BY (AGENCY) <i>CHICAGO DISTRICT</i>
(NORTHING)(EASTING) (FT.) (M)		(EASTING)(NORTHING) (FT.) (M)		GRID AND ZONE	DATE <i>1966</i>

TO OBTAIN GRID AZIMUTH, ADD TO THE GEODETIC AZIMUTH-  
TO OBTAIN GRID AZ. (ADD)(SUB.) TO THE GEODETIC AZIMUTH-

OBJECT	AZIMUTH OR DIRECTION (GEODETIC)(GRID) (MAGNETIC)		BACK AZIMUTH	GEOD. DISTANCE (METERS) (FEET)		GRID DISTANCE (METERS) (FEET)	
<i>PT. NEAR 16/15</i>	<i>S 10°-35'-10" E</i>					<i>185.9</i>	
<i>REF. 1</i>	<i>S. 09°-16'-30" W.</i>					<i>23.44</i>	
<i>REF. 2</i>	<i>S. 83°-38'-30" W.</i>					<i>23.44</i>	
<i>REF. 3</i>	<i>N. 41°-36'-50" W.</i>					<i>5.11</i>	

DISTANCES TO REFERENCES ARE HORIZONTAL AND ARE TO NAILS. TREES ARE BLAZED AND SCRIBED E.



SKETCH