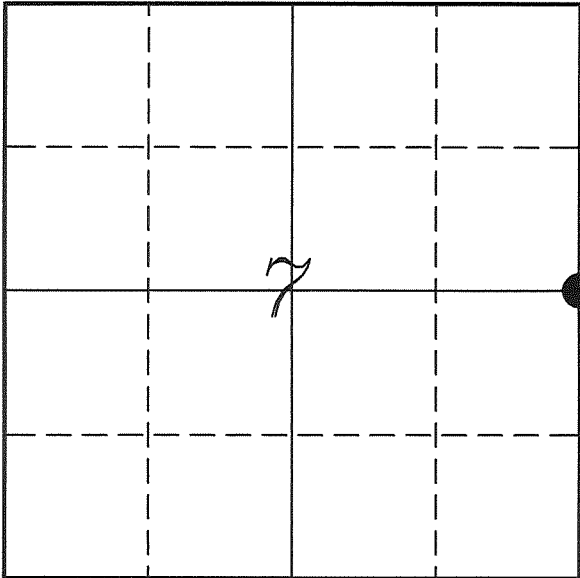

U. S. PUBLIC LAND SURVEY MONUMENT RECORD

SECTION 7, T14N, R2W, TOWN OF WHITESTOWN
VERNON COUNTY, WISCONSIN



VERNON COUNTY COORDINATE SYSTEM	
Northing	202847.159
Easting	764952.655
Datum	NAD 1983 (2007)
Elevation	
Datum	
TYPE OF LANDMARK:	
Set Lunde Monument	
BEARINGS ARE REFERENCED TO:	
Vernon County Coordinates	

LOCATION OF LANDMARK

Crew: Laurence E Johns III
Larry Handschy

Date: 1 March 2011

Describe any record evidence, monument evidence, testimonial evidence or any other material evidence you considered and whether the monument was found or restored through acceptance of an obliterated evidence location.

No bearing trees of record were located.

There is no occupation in the vicinity of this corner.

There is a fence line from the W 1/4 Corner of Section 7 to the creek located just West of here. I took several measurements along this fence line and it is straight to within 9" along its entire length.

I extended this line to the straight line between the NE & SE Corners of the Section and found that the distances match Knower's very well.

I accepted this location as the best available evidence of the original government corner and placed a Lunde Monument.

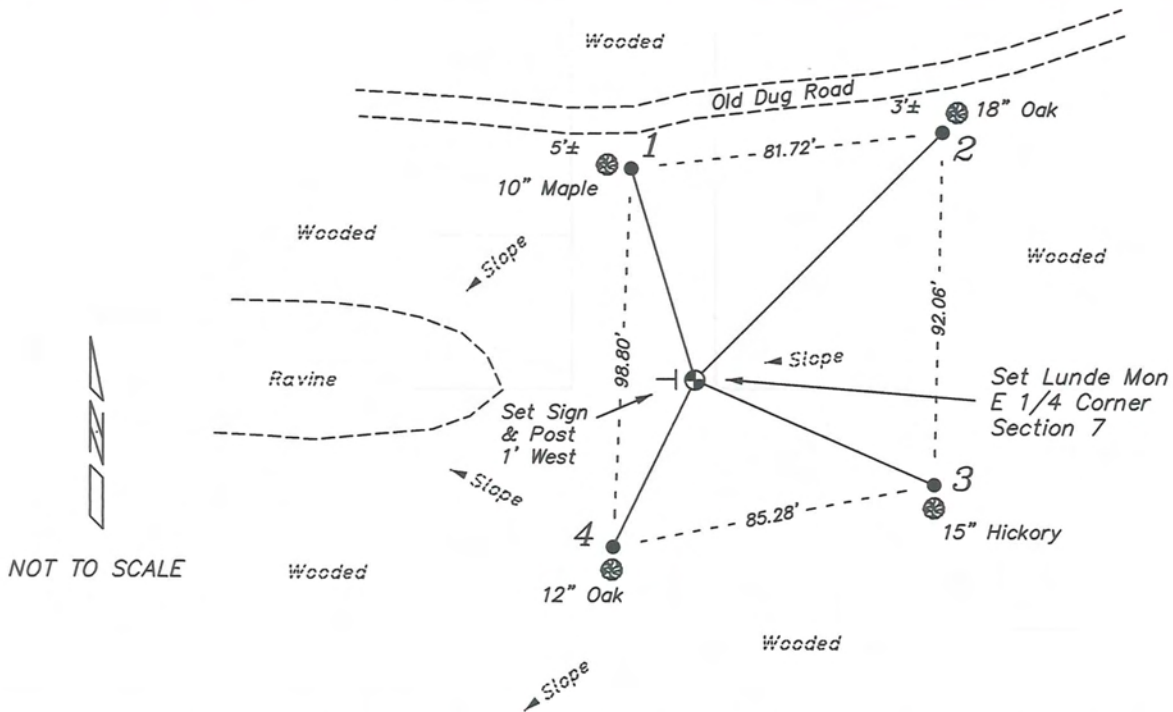
Describe or show any material discrepancy between the location of the restored corner and that of the corner previously restored or re-established.

Noah Phelps established this corner in October 1847.

Wm Knower was at this corner, in February & March 1882, during surveys in Sections 7 & 8. He shows that he found the government corner.

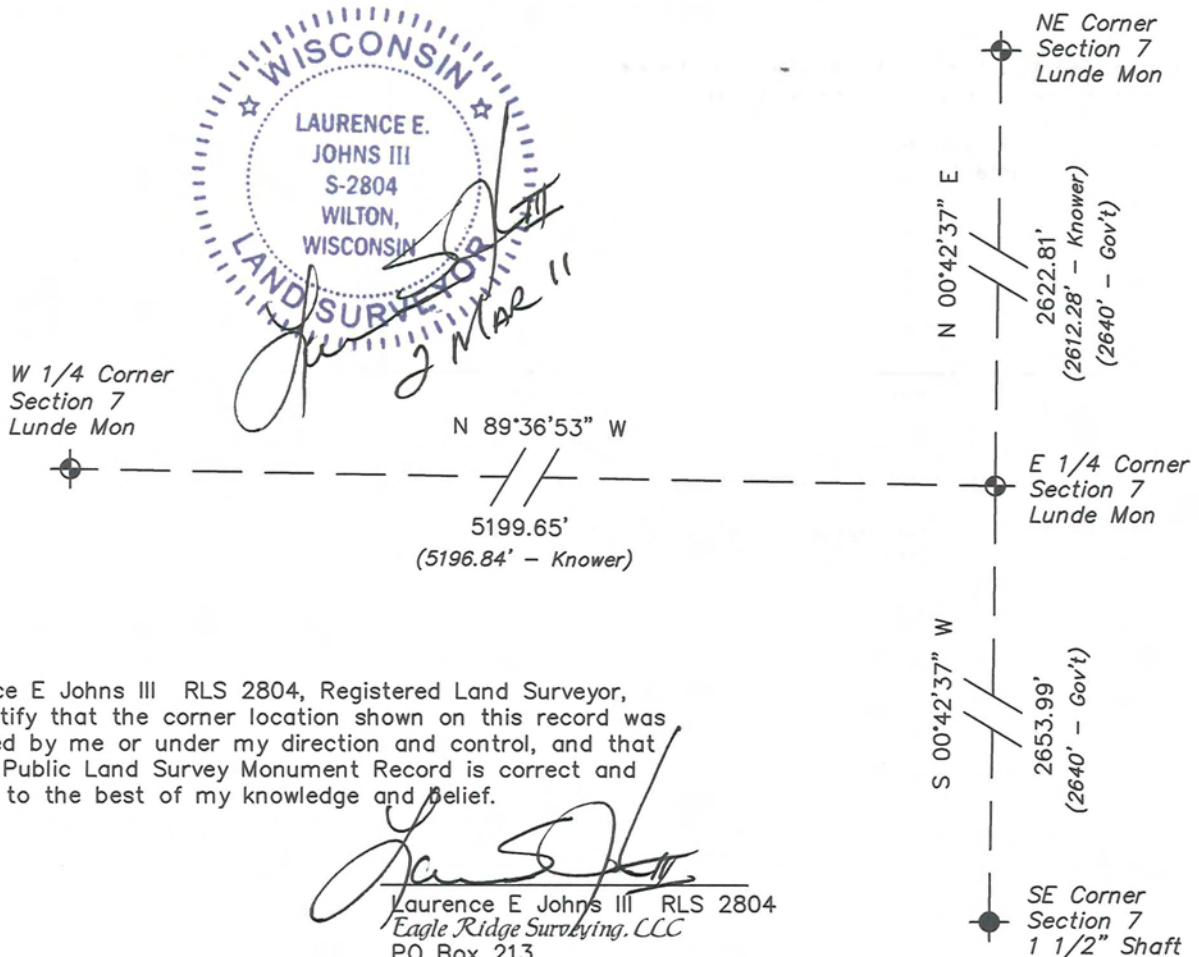
RECORD OF DURABLE WITNESS MONUMENTS

NO	DESCRIPTION	BEARING	DISTANCE
1	Set 3/4" x 18" Iron Rod 1' East of a 10" Maple	N 16°49'29" W	57.62'
2	Set 3/4" x 18" Iron Rod 2' Southwest of a 18" White Oak	N 44°51'08" E	91.41'
3	Set 3/4" x 18" Iron Rod 1' North of a 15" Hickory	S 66°26'37" E	68.16'
4	Set 3/4" x 18" Iron Rod 1' North of a 12" White Oak	S 26°00'14" W	48.44'

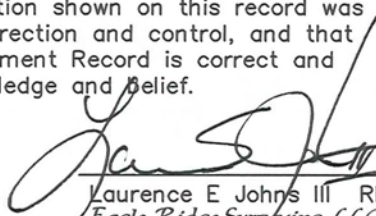


PLAN VIEW DRAWING OF REFERENCE TIES

Map Showing Distance And Direction To Other Public Land Survey Corners Used For Re-Establishing The Corner



I, Laurence E Johns III RLS 2804, Registered Land Surveyor, hereby certify that the corner location shown on this record was determined by me or under my direction and control, and that this U.S. Public Land Survey Monument Record is correct and complete to the best of my knowledge and belief.

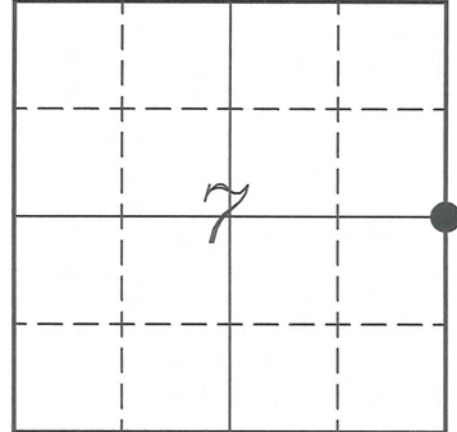

 Laurence E Johns III RLS 2804
 Eagle Ridge Surveying, LLC
 PO Box 213
 Wilton, Wisconsin
 2 March 2011

VERNON COUNTY COORDINATE SUBMISSION FORM
 "As An Addendum To"
VERNON COUNTY
CERTIFIED U.S. PUBLIC LAND SURVEY MONUMENT RECORD

INSTRUCTIONS: THIS RECORD FORM SHOULD BE USED WHEN COORDINATES ARE PROVIDED FOR A PUBLIC LAND SURVEY CORNER AND SHALL INCLUDE ALL OF THE FOLLOWING ELEMENTS (A-D)

(A) IDENTIFY THE CORNER BY REFERENCE TO THE U.S. PUBLIC LAND SURVEY SYSTEM IN DIAGRAM AT RIGHT

● = CORNER MONUMENT



T 14 N, R 2 W

(B) COORDINATES:

GEOGRAPHIC (Degrees Minutes Seconds)

LATITUDE: 43° 42' 13.0359" N

LONGITUDE: 90° 39' 04.2035" W

ELLIPSOID HT (m): _____

DATUM: NAD 1983 (2007)

GEOID03 ADJ: -33.472

ORTHOMETRIC HT: _____

VERNON COUNTY (U.S. FEET)

Coord Quality (+/-)

NORTHING (Y): 202847.159 _____

EASTING (X): 764952.655 _____

GPS METHOD USED TO COMPUTE COORDINATES (check as applicable)

RTK Observations Static Baselines OPUS-RS Solution OPUS-S Solution

Combination of GPS Observations & Conventional Procedures

Single Angle Measurement Closed Traverse Loop

Was a Least Squares Adjustment Used to Compute Coordinates? Yes / No

BASE CONTROL USED FOR COORDINATE COMPUTATION

Station Name	Station Coordinates	Date/Time
<u>OPUS STA - WHIT</u>	<u>43° 41' 33.8967" N 90° 40' 00.4621" W</u>	<u>02/28/2011 - 14:27</u>
	<u>N - 198877.737 E - 760825.380</u>	
<u>Same</u>		<u>03/01/2011 - 11:45</u>

(C) REASON FOR COORDINATES SUBMITTAL (check one)

Being Filed With a New U.S. PLS Monument Record

To Correct the Coordinates Listed on a Previously Filed PLS Monument Record

To Provide Coordinates for Previously Filed PLS Monument Record without Coordinates

To Provide Supplemental Coordinates for a Previously Filed PLS Monument Record

MOST RECENT PLS MONUMENT RECORD DATE:


R.L.S. WHO CREATED MOST RECENT PLS MONUMENT RECORD:

(D) AGENT(S) PERFORMING GPS OBSERVATIONS & COORDINATE COMPUTATION

1) LAURENCE E JOHNS III

2) _____

I, LAURENCE E JOHNS III RLS 2804, REGISTERED LAND SURVEYOR, HEREBY CERTIFY THAT THE COORDINATES PROVIDED ON THIS RECORD WERE DETERMINED BY ME OR UNDER MY DIRECTION AND CONTROL AND THAT THIS COORDINATE SUBMISSION FORM IS CORRECT AND COMPLETE TO THE BEST OF MY KNOWLEDGE AND BELIEF.


 Laurence E Johns III / RLS-2804
 Eagle Ridge Surveying, LLC
 PO Box 213
 Wilton, Wisconsin
 2 March 2011

