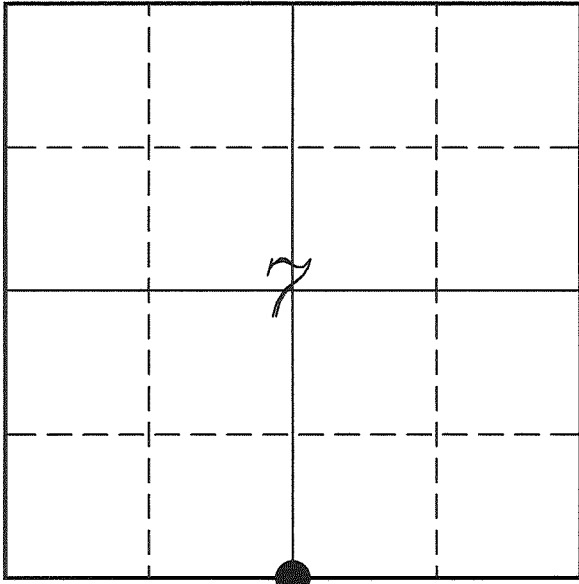


---

# U. S. PUBLIC LAND SURVEY MONUMENT RECORD

---

## SECTION 7, T14N, R2W, TOWN OF WHITESTOWN VERNON COUNTY, WISCONSIN



**LOCATION OF LANDMARK**

Crew: Laurence E Johns III  
Larry Handschy

Date: 17 February 2011

VERNON COUNTY COORDINATE SYSTEM	
Northing	200200.799
Easting	762225.407
Datum	NAD 1983 (2007)
Elevation	
Datum	
TYPE OF LANDMARK:	
Set Lunde Monument	
BEARINGS ARE REFERENCED TO:	
Vernon County Coordinates	

---

*Describe any record evidence, monument evidence, testimonial evidence or any other material evidence you considered and whether the monument was found or restored through acceptance of an obliterated evidence location.*

No bearing trees of record were located.

The fence corner located at the corner is approximately 23 feet West of the prorational split as shown by Knower.

This location fits very well with interior fence corners as probably surveyed by Knower in his survey of 1882.

When the center of section is computed based from this location, it fits to within 2 feet of Knower's distances, in both to the East and the West.

I accepted the fence corner as the best available evidence of the original government corner and placed a Lunde Monument.

---

*Describe or show any material discrepancy between the location of the restored corner and that of the corner previously restored or re-established.*

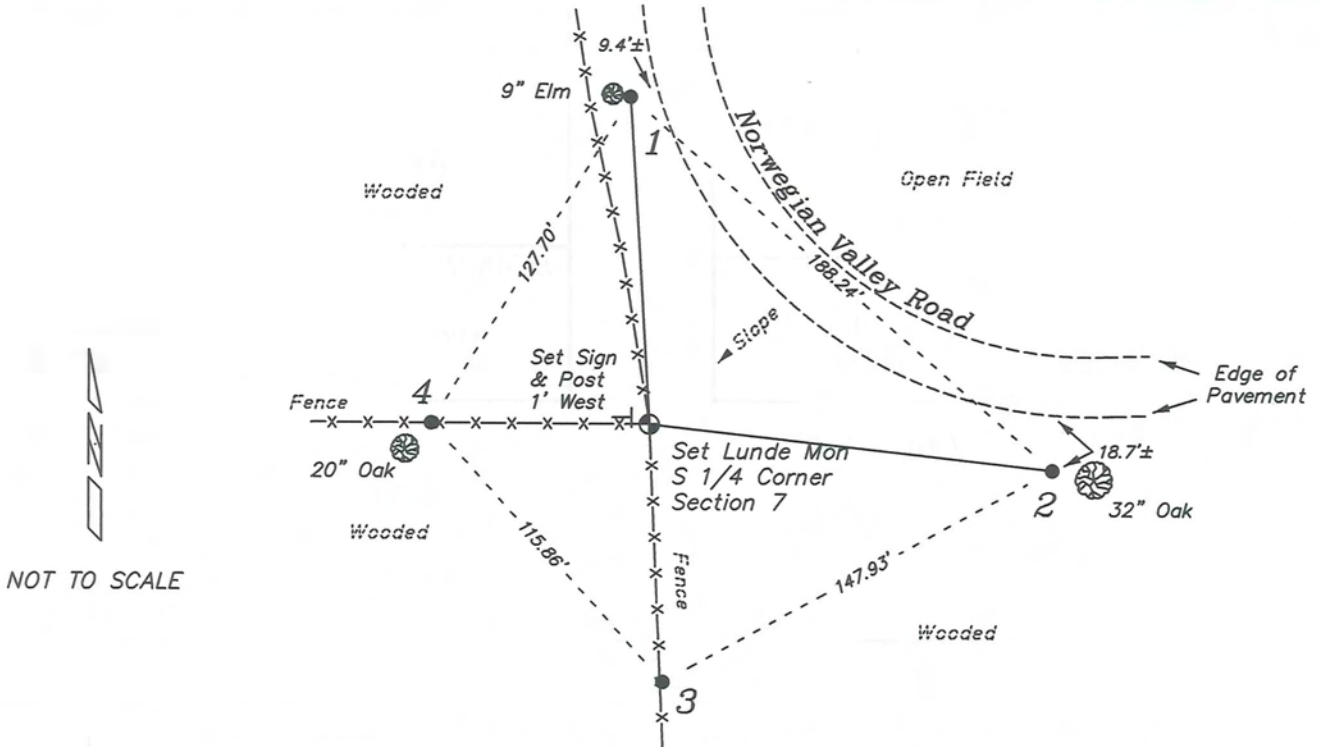
Noah Phelps established this corner in October 1847.

Wm Knower was at this corner, in February 1882, during a survey in Section 7. He renewed the ties for the corner.

Wm Knower was at this corner again, in June 1895, during a survey in Section 7. He again renewed the tie.

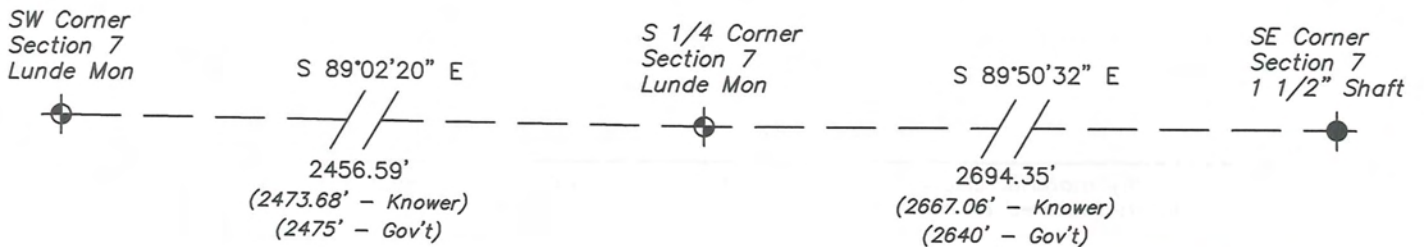
# RECORD OF DURABLE WITNESS MONUMENTS

NO	DESCRIPTION	BEARING	DISTANCE
1	Set 3/4" x 18" Iron Rod 2' East of a 9" Elm	N 03°23'13" W	109.60'
2	Set 3/4" x 18" Iron Rod 2' West of a 32" White Oak	S 83°32'03" E	135.44'
3	Set 3/4" x 18" Iron Rod In Fence	S 03°04'05" E	86.01'
4	Set 3/4" x 18" Iron Rod In Fence - 3' NE of a 20" White Oak	N 89°45'59" W	72.84'

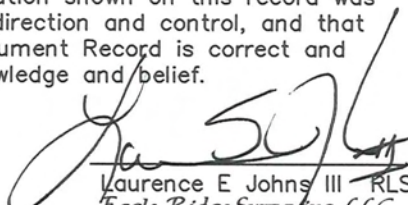


## PLAN VIEW DRAWING OF REFERENCE TIES

Map Showing Distance And Direction To Other Public Land Survey Corners Used For Re-Establishing The Corner



I, Laurence E Johns III RLS 2804, Registered Land Surveyor, hereby certify that the corner location shown on this record was determined by me or under my direction and control, and that this U.S. Public Land Survey Monument Record is correct and complete to the best of my knowledge and belief.

  
 Laurence E Johns III RLS 2804  
 Eagle Ridge Surveying, LLC  
 PO Box 213  
 Wilton, Wisconsin  
 17 February 2011

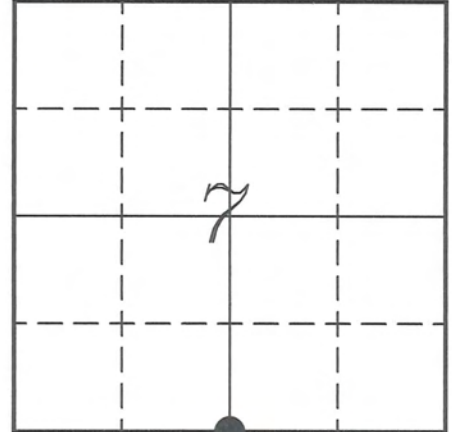
  
 LAURENCE E. JOHNS III  
 S-2804  
 WILTON, WISCONSIN  
 17 Feb 11

**VERNON COUNTY COORDINATE SUBMISSION FORM**  
 "As An Addendum To"  
**VERNON COUNTY**  
**CERTIFIED U.S. PUBLIC LAND SURVEY MONUMENT RECORD**

INSTRUCTIONS: THIS RECORD FORM SHOULD BE USED WHEN COORDINATES ARE PROVIDED FOR A PUBLIC LAND SURVEY CORNER AND SHALL INCLUDE ALL OF THE FOLLOWING ELEMENTS (A-D)

(A) IDENTIFY THE CORNER BY REFERENCE TO THE U.S. PUBLIC LAND SURVEY SYSTEM IN DIAGRAM AT RIGHT

● = CORNER MONUMENT



T 14 N, R 2 W

(B) COORDINATES:

GEOGRAPHIC (Degrees Minutes Seconds)

LATITUDE: 43° 41' 46.9428" N

LONGITUDE: 90° 39' 41.3812" W

ELLIPSOID HT (m): \_\_\_\_\_

DATUM: NAD 1983 (2007)

GEOID03 ADJ: -33.441

ORTHOMETRIC HT: \_\_\_\_\_

VERNON COUNTY (U.S. FEET)

Coord Quality (+/-)

NORTHING (Y): 200200.799 \_\_\_\_\_

EASTING (X): 762225.407 \_\_\_\_\_

GPS METHOD USED TO COMPUTE COORDINATES (check as applicable)

RTK Observations     Static Baselines     OPUS-RS Solution     OPUS-S Solution

Combination of GPS Observations & Conventional Procedures

Single Angle Measurement     Closed Traverse Loop

Was a Least Squares Adjustment Used to Compute Coordinates? Yes /  No

BASE CONTROL USED FOR COORDINATE COMPUTATION

Station Name	Station Coordinates	Date/Time
<u>OPUS STA - WHIT</u>	<u>43° 41' 33.8967" N    90° 40' 00.4621" W</u>	<u>12/09/2010 - 12:48</u>
	<u>N - 198877.737    E - 760825.380</u>	
<u>Same</u>		<u>02/17/2011 - 12:56</u>

(C) REASON FOR COORDINATES SUBMITTAL (check one)

Being Filed With a New U.S. PLS Monument Record

To Correct the Coordinates Listed on a Previously Filed PLS Monument Record

To Provide Coordinates for Previously Filed PLS Monument Record without Coordinates

To Provide Supplemental Coordinates for a Previously Filed PLS Monument Record

MOST RECENT PLS MONUMENT RECORD DATE:

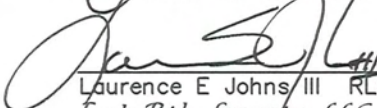
R.L.S. WHO CREATED MOST RECENT PLS MONUMENT RECORD:

(D) AGENT(S) PERFORMING GPS OBSERVATIONS & COORDINATE COMPUTATION

1) LAURENCE E JOHNS III

2) \_\_\_\_\_

I, LAURENCE E JOHNS III RLS 2804, REGISTERED LAND SURVEYOR, HEREBY CERTIFY THAT THE COORDINATES PROVIDED ON THIS RECORD WERE DETERMINED BY ME OR UNDER MY DIRECTION AND CONTROL AND THAT THIS COORDINATE SUBMISSION FORM IS CORRECT AND COMPLETE TO THE BEST OF MY KNOWLEDGE AND BELIEF.

  
 Laurence E Johns III RLS 2804  
 Eagle Ridge Surveying, LLC  
 PO Box 213  
 Wilton, Wisconsin  
 17 February 2011

