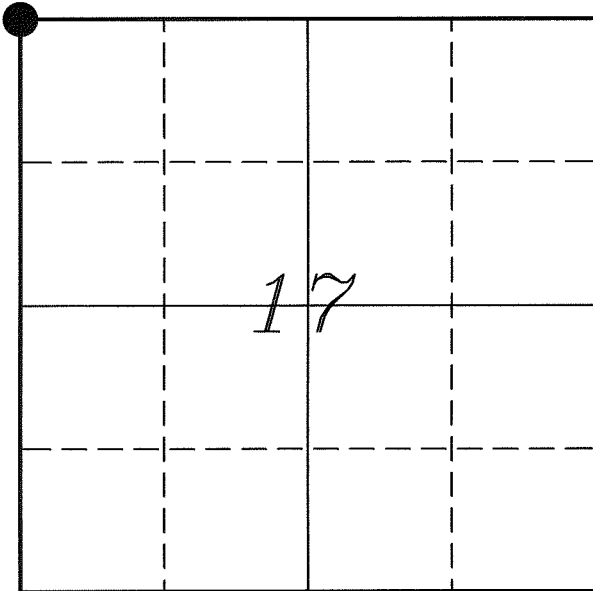

U. S. PUBLIC LAND SURVEY MONUMENT RECORD

SECTION 17, T14N, R2W, TOWN OF WHITESTOWN VERNON COUNTY, WISCONSIN



LOCATION OF LANDMARK

Crew: Laurence E Johns III
Larry Handschy

Date: 15 September 2010

VERNON COUNTY COORDINATE SYSTEM	
Northing	200193.377
Easting	764919.749
Datum	NAD 1983 (2007)
Elevation	
Datum	
TYPE OF LANDMARK:	
Existing 1 1/2" Steel Bar	
BEARINGS ARE REFERENCED TO:	
Vernon County Coordinates	

Describe any record evidence, monument evidence, testimonial evidence or any other material evidence you considered and whether the monument was found or restored through acceptance of an obliterated evidence location.

The only bearing trees that could be located were the ones marked by Dechant.

I found the 1 1/2" Steel Shaft set by Dechant.

Dechant indicates on his tie sheet that he measured in all four directions and found that the existing fence lines fit section distances well.

After reviewing the information on his tie sheet and the occupation in the area I accepted this location as the best available evidence of the original corner. I updated the ties and I decided not to replace his monument due to my belief that it is more durable than a Lunde Monument.

Describe or show any material discrepancy between the location of the restored corner and that of the corner previously restored or re-established.

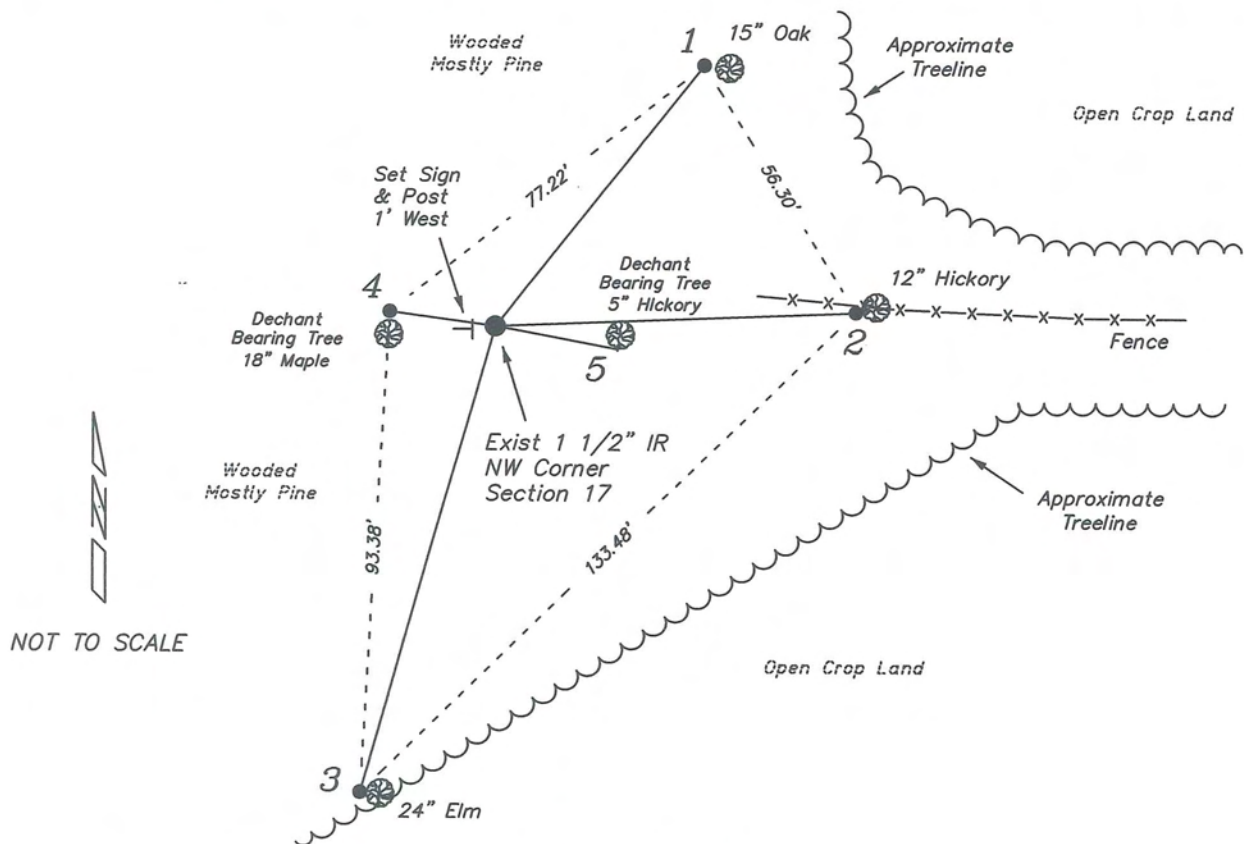
Noah Phelps established this corner in October 1847.

Wm Knower was at this corner, in February & March of 1882, during surveys in Section 7 & 8. He shows that he found the government corner.

Gary Dechant was at this corner, in November 1999, during a survey in Section 17. He reestablishes this corner, sets a 1 1/2" x 6' Steel Shaft, and prepares a tie sheet.

RECORD OF DURABLE WITNESS MONUMENTS

NO	DESCRIPTION	BEARING	DISTANCE
1	Set 3/4" x 18" Iron Rod 1' West of 15" Oak	N 38°18'58" E	64.73'
2	Set 3/4" x 18" Iron Rod West Side of 12" Hickory	N 87°39'00" E	69.74'
3	Set 3/4" x 18" Iron Rod 1' West of 24" Elm	S 15°54'38" W	94.03'
4	Set 3/4" x 18" Iron Rod 6" North of Dechant Tree (18" Maple)	N 82°11'50" W (N 85° W)	20.56' (20.57')
5	Existing 40d Nail South Side of Dechant Tree (5" Hickory)	S 83°14'53" E (S 85° E)	23.42' (23.39')



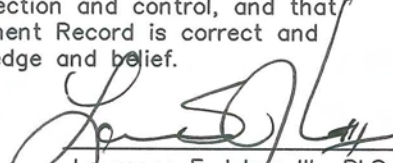
PLAN VIEW DRAWING OF REFERENCE TIES

Map Showing Distance And Direction To Other Public Land Survey
Corners Used For Re-Establishing The Corner

None.



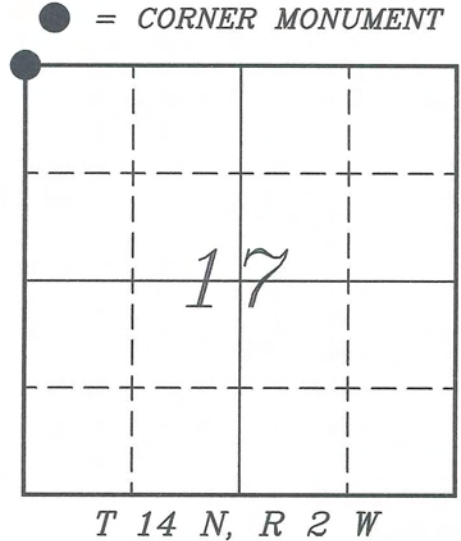
I, Laurence E Johns III RLS 2804, Registered Land Surveyor, hereby certify that the corner location shown on this record was determined by me or under my direction and control, and that this U.S. Public Land Survey Monument Record is correct and complete to the best of my knowledge and belief.


 Laurence E Johns III RLS 2804
 Eagle Ridge Surveying, LLC
 PO Box 213
 Wilton, Wisconsin
 17 September 2010

VERNON COUNTY COORDINATE SUBMISSION FORM
 "As An Addendum To"
VERNON COUNTY
CERTIFIED U.S. PUBLIC LAND SURVEY MONUMENT RECORD

INSTRUCTIONS: THIS RECORD FORM SHOULD BE USED WHEN COORDINATES ARE PROVIDED FOR A PUBLIC LAND SURVEY CORNER AND SHALL INCLUDE ALL OF THE FOLLOWING ELEMENTS (A-D)

(A) IDENTIFY THE CORNER BY REFERENCE TO THE U.S. PUBLIC LAND SURVEY SYSTEM IN DIAGRAM AT RIGHT



(B) COORDINATES:

GEOGRAPHIC (Degrees Minutes Seconds)
 LATITUDE: 43° 41' 46.8289" N
 LONGITUDE: 90° 39' 04.7088" W
 ELLIPSOID HT (m): _____
 DATUM: NAD 1983 (2007)
 GEOID03 ADJ: -33.467
 OTHROMETRIC HT: _____

VERNON COUNTY (U.S. FEET) Coord Quality (+/-)
 NORTHING (Y): 200193.377 _____
 EASTING (X): 764919.749 _____

GPS METHOD USED TO COMPUTE COORDINATES (check as applicable)

- RTK Observations Static Baselines OPUS-RS Solution OPUS-S Solution
 Combination of GPS Observations & Conventional Procedures
 Single Angle Measurement Closed Traverse Loop

Was a Least Squares Adjustment Used to Compute Coordinates? Yes / No

BASE CONTROL USED FOR COORDINATE COMPUTATION

Station Name	Station Coordinates	Date/Time
<u>OPUS T002</u>	<u>43° 41' 19.4430" N 90° 38' 33.1190" W</u>	<u>09/15/2010 - 15:42</u>
	<u>N - 197424.084 E - 767245.351</u>	
<u>Same</u>		<u>09/01/2010 - 12:00</u>

(C) REASON FOR COORDINATES SUBMITTAL (check one)

- Being Filed With a New U.S. PLS Monument Record
 To Correct the Coordinates Listed on a Previously Filed PLS Monument Record
 To Provide Coordinates for Previously Filed PLS Monument Record without Coordinates
 To Provide Supplemental Coordinates for a Previously Filed PLS Monument Record

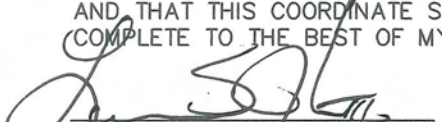
MOST RECENT PLS MONUMENT RECORD DATE:

R.L.S. WHO CREATED MOST RECENT PLS MONUMENT RECORD:

(D) AGENT(S) PERFORMING GPS OBSERVATIONS & COORDINATE COMPUTATION

- 1) LAURENCE E JOHNS III
 2) _____

I, LAURENCE E JOHNS III RLS 2804, REGISTERED LAND SURVEYOR, HEREBY CERTIFY THAT THE COORDINATES PROVIDED ON THIS RECORD WERE DETERMINED BY ME OR UNDER MY DIRECTION AND CONTROL AND THAT THIS COORDINATE SUBMISSION FORM IS CORRECT AND COMPLETE TO THE BEST OF MY KNOWLEDGE AND BELIEF.


 Laurence E Johns III RLS 2804
 Eagle Ridge Surveying, LLC
 PO Box 213
 Wilton, Wisconsin
 17 September 2010



I, Gary L. Dechant, do hereby certify that on the 2nd day of November 1999, I found (evidence) (~~no evidence~~) of the NW corner of Section 17, T 14 N, R 2 W Fourth Principal Meridian, and I re-established said corner according to the Wisconsin Statutes as shown and described hereon.

Dated this 3rd day of Nov. 1999.

Gary L. Dechant
 R.L.S. 1744
 Title

History of corner establishment since Original Government Survey

Wm. Knower was here in 1882 and found Gov't corner as recorded in Book 1, P. 174 and P. 176 of the Vernon County Survey Records.

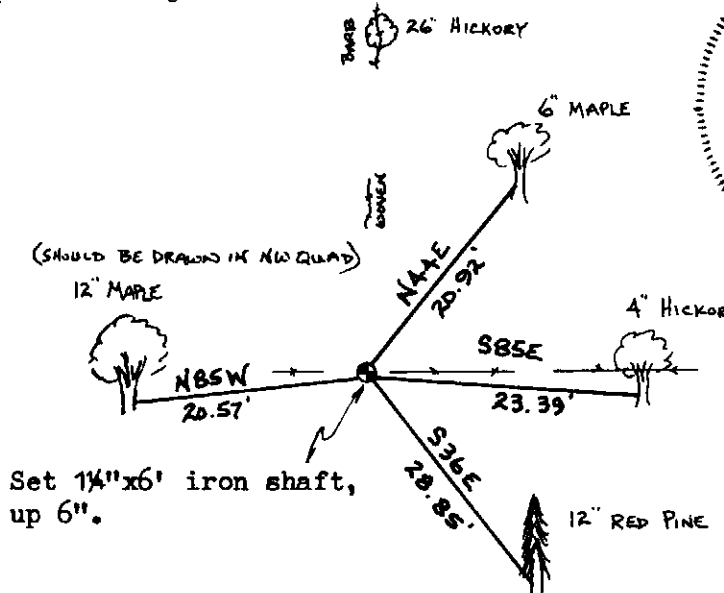
Description of corner evidence found:

Set corner in remnants of east-west fence and half way between the NW corner of Section 17 and the NW corner of Section 18. Fits other occupational evidence very well. Falls in line with north-south fence remnants at the SW corner of the NW-NW of Section 17, fits occupied north-south fence at the NE corner of the NW-NW within 3 feet, and distance to the NW corner of Section 8 is short as shown by William Knower.

Description of corner and witness monuments, references and accessories used to perpetuate the original or re-established location of this corner.

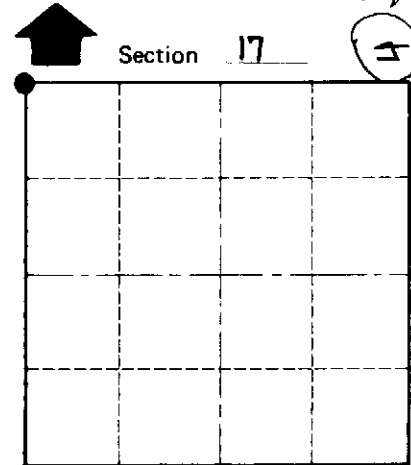
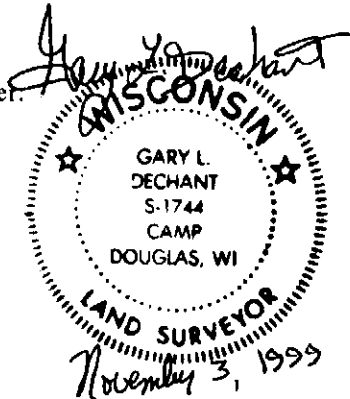
Witnesses to corner location:

ZACHARIAH P. DECHANT
GARY L. DECHANT



Set 1 1/4" x 6" iron shaft, up 6".

Trees double blazed with 40d nails set.



● = LOCATION CORNER

T 14 N R 2 W

WISCONSIN

SURVEY CONTROL ORDER

Horizontal	_____
Vertical	_____
Corner	
Control Sta. Name	

WISCONSIN COORDINATE SYSTEM

Corner	East (X)	North (Y)	Elevation (Z)	Zone
Control Sta. Name				

City, Village or Town WHITESTOWN
 County of VERNON

COUNTY SURVEYOR FORM NO. 1

NOV 5 1999 6664 AGW

