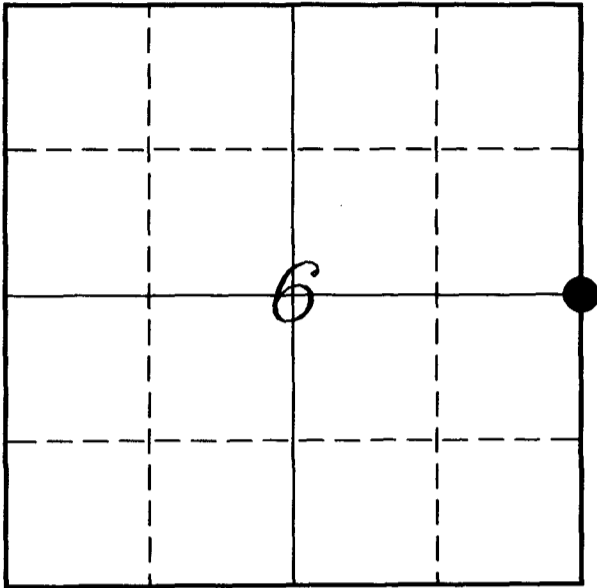


---

# U. S. PUBLIC LAND SURVEY MONUMENT RECORD

---

## SECTION 6, T14N, R2W, TOWN OF WHITESTOWN VERNON COUNTY, WISCONSIN



**LOCATION OF LANDMARK**

Crew: Laurence E Johns III  
Andy Anderson

Date: 29 October 2008

VERNON COUNTY COORDINATE SYSTEM	
Northing	208418.162
Easting	764707.918
Elevation	
TYPE OF LANDMARK:	
Set 3/4" Iron Rod w/ 2" Iron Pipe as witness	
BEARINGS ARE REFERENCED TO:	
Vernon County Coordinates	

---

*Describe any record evidence, monument evidence, testimonial evidence or any other material evidence you considered and whether the monument was found or restored through acceptance of an obliterated evidence location.*

Noah Phelps subdivided the township in June 1847.

Wm Knower resurveyed Sections 5, 6, 7 & 8 in Feb 1882.

The fences within Section 6 fit very well with the distances shown on Knower's survey.

It is my belief that the fences located within Section 6 were placed based on Knower's survey.

R Maxwell set a 3/4" Iron Rod at the fence corner during a survey in Section 5.

Did not locate Maxwell's rod it now lands in the middle of a wide wash.

Re-created his corner and accepted it as the best available evidence of the original government corner.

---

*Describe or show any material discrepancy between the location of the restored corner and that of the corner previously restored or re-established.*

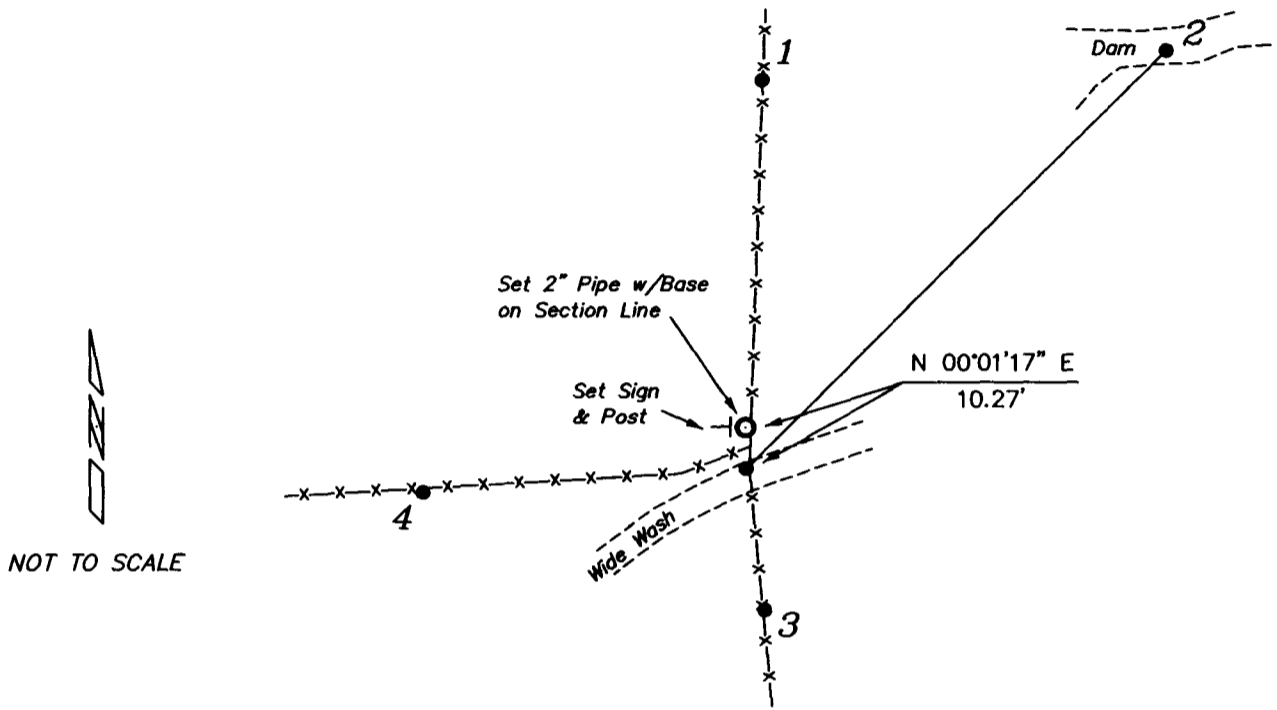
Wm Knower recovered the stumps of the original bearing trees.

Due to the irregularities of the locations of the government corners in Section 6, he obtained a sworn statement from the land owner indicating the corner was in the correct location based on the bearing trees that the land owner had seen.

Corner lands within a wide wash. Set a 3/4" Iron Rod at this corner, but did not expect it to last beyond a large rain. Set a 2" Iron Pipe with base 10.27 feet north of this corner and on the section line. Set sign & post next to this pipe.

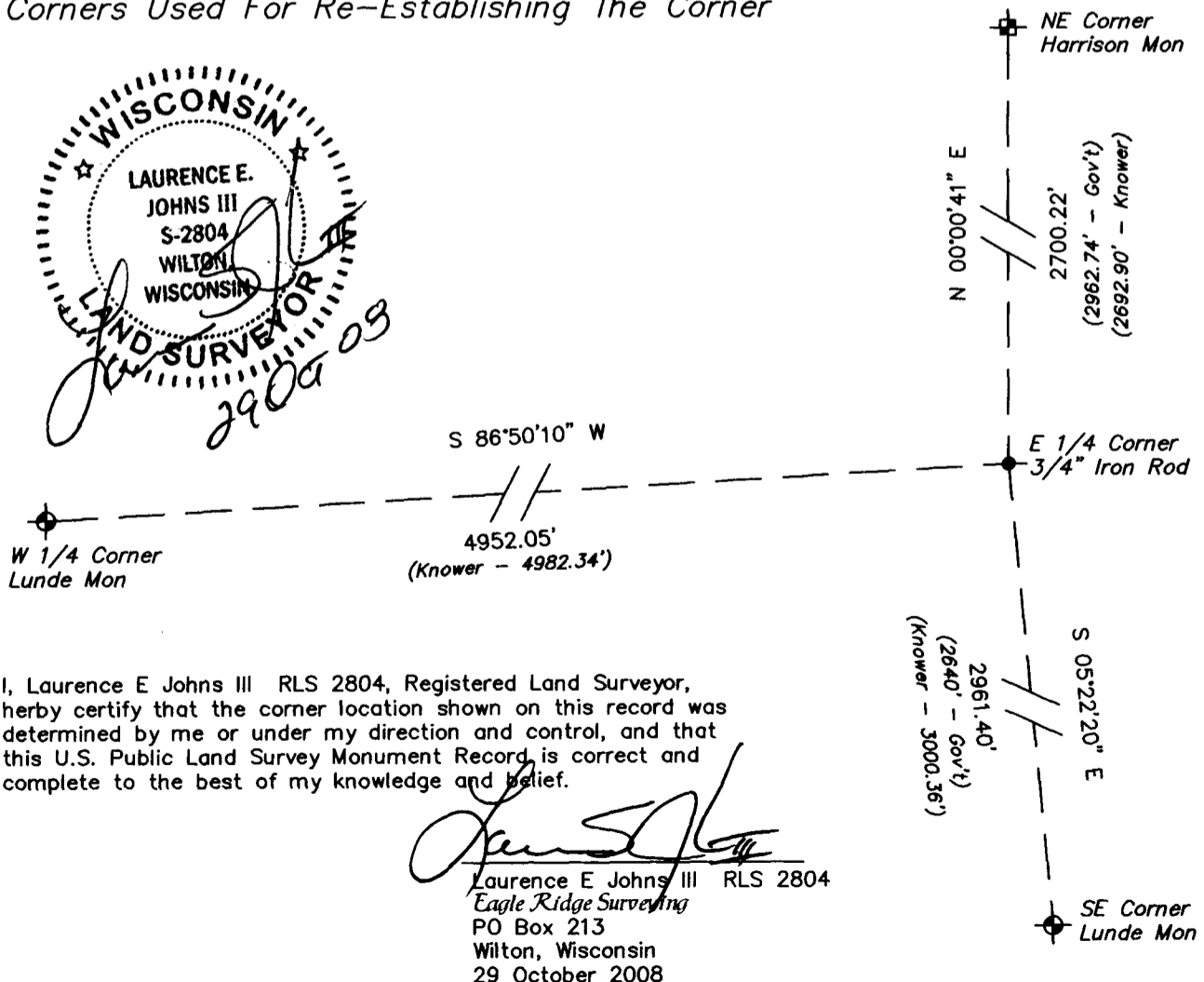
# RECORD OF DURABLE WITNESS MONUMENTS

NO	DESCRIPTION	BEARING	DISTANCE
1	Set 3/4" x 18" Iron Rod In Fence Line	N 01°17'42" E	146.24'
2	Set 3/4" x 18" Iron Rod In Middle of Dam	N 45°00'55" E	338.61'
3	Set 3/4" x 18" Iron Rod In Fence Line	S 05°01'05" E	36.86'
4	Set 3/4" x 18" Iron Rod In Fence Line	S 87°32'17" W	86.40'



## PLAN VIEW DRAWING OF REFERENCE TIES

Map Showing Distance And Direction To Other Public Land Survey  
Corners Used For Re-Establishing The Corner

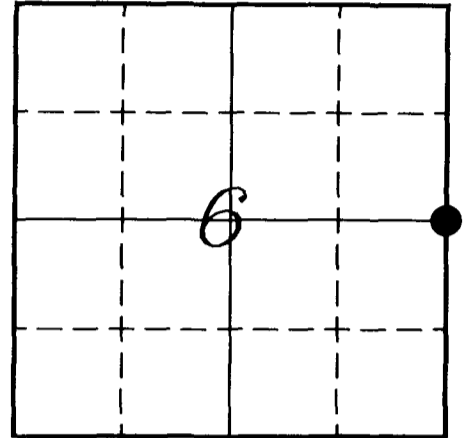


**VERNON COUNTY COORDINATE SUBMISSION FORM**  
 "As An Addendum To"  
**VERNON COUNTY**  
**CERTIFIED U.S. PUBLIC LAND SURVEY MONUMENT RECORD**

INSTRUCTIONS: THIS RECORD FORM SHOULD BE USED WHEN COORDINATES ARE PROVIDED FOR A PUBLIC LAND SURVEY CORNER AND SHALL INCLUDE ALL OF THE FOLLOWING ELEMENTS (A-D)

(A) IDENTIFY THE CORNER BY REFERENCE TO THE U.S. PUBLIC LAND SURVEY SYSTEM IN DIAGRAM AT RIGHT

● = CORNER MONUMENT



T 14 N, R 2 W

(B) COORDINATES:

GEOGRAPHIC (Degrees Minutes Seconds)

LATITUDE: 43° 43' 08.0561" N

LONGITUDE: 90° 39' 07.4152" W

ELLIPSOID HT (m): \_\_\_\_\_

DATUM: NAD 1983 (2007)

GEOID99 ADJ: -33.463

ORTHOMETRIC HT: \_\_\_\_\_

VERNON COUNTY (U.S. FEET)

Coord Quality (+/-)

NORTHING (Y): 208418.162 \_\_\_\_\_

EASTING (X): 764707.918 \_\_\_\_\_

GPS METHOD USED TO COMPUTE COORDINATES (check as applicable)

- RTK                       Single Observation     Averaged Observations  
 Static Baseline     Single Baseline         Averaged Baselines     OPUS Solution

BASE CONTROL USED FOR COORDINATE COMPUTATION

Station Name	Station Coordinates (Lat/Long)
<u>SHELDON SW</u>	<u>43° 43' 53.343" N    90° 40' 06.960" W</u>
_____	<u>N - 212997.513    E - 760328.461</u>
_____	_____
_____	_____

Was a Least Squares Adjustment Used to Compute Coordinates? Yes /  No

Date(s) of GPS Observations: 9 OCTOBER 2008    28 OCTOBER 2008

(C) REASON FOR COORDINATES SUBMITTAL (check one)

- Being Filed With a New U.S. PLS Monument Record  
 To Correct the Coordinates Listed on a Previously Filed PLS Monument Record  
 To Provide Coordinates for Previously Filed PLS Monument Record without Coordinates  
 To Provide Supplemental Coordinates for a Previously Filed PLS Monument Record


MOST RECENT PLS MONUMENT RECORD DATE:

R.L.S. WHO CREATED MOST RECENT PLS MONUMENT RECORD:

(D) AGENT(S) PERFORMING GPS OBSERVATIONS & COORDINATE COMPUTATION

- 1) LAURENCE E JOHNS III  
 2) \_\_\_\_\_

I, LAURENCE E JOHNS III RLS 2804, REGISTERED LAND SURVEYOR, HEREBY CERTIFY THAT THE COORDINATES PROVIDED ON THIS RECORD WERE DETERMINED BY ME OR UNDER MY DIRECTION AND CONTROL AND THAT THIS COORDINATE SUBMISSION FORM IS CORRECT AND COMPLETE TO THE BEST OF MY KNOWLEDGE AND BELIEF.

  
 Laurence E Johns III RLS 2804  
 Eagle Ridge Surveying  
 PO Box 213  
 Wilton, Wisconsin  
 29 October 2008

