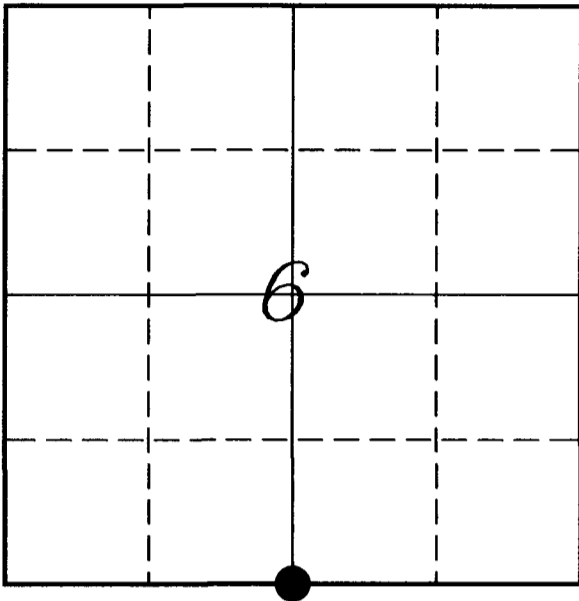

U. S. PUBLIC LAND SURVEY MONUMENT RECORD

SECTION 6, T14N, R2W, TOWN OF WHITESTOWN VERNON COUNTY, WISCONSIN



LOCATION OF LANDMARK

Crew: Laurence E Johns III

Date: 29 October 2008

<i>VERNON COUNTY COORDINATE SYSTEM</i>	
<i>Northing</i>	<i>205424.394</i>
<i>Easting</i>	<i>762308.413</i>
<i>Elevation</i>	
<i>TYPE OF LANDMARK:</i>	
<i>Set Lunde Monument</i>	
<i>BEARINGS ARE REFERENCED TO:</i>	
<i>Vernon County Coordinates</i>	

Describe any record evidence, monument evidence, testimonial evidence or any other material evidence you considered and whether the monument was found or restored through acceptance of an obliterated evidence location.

Noah Phelps subdivided the township in June 1847.

Wm Knower resurveyed Sections 5, 6, 7 & 8 in Feb 1882.

It is my belief that the fences located within Section 6 were placed based on Knower's survey.

The intersection of fences fit very well with the distances shown on Knower's survey.

Accepted the intersection of fences as the best available evidence of the original government corner.

Describe or show any material discrepancy between the location of the restored corner and that of the corner previously restored or re-established.

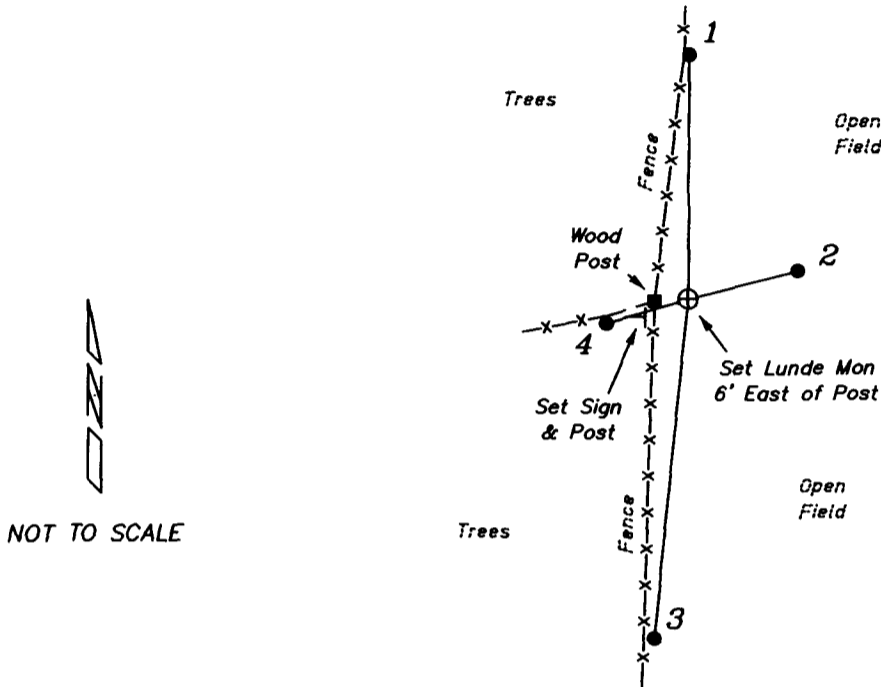
Wm Knower recovered the stump of the original bearing

Due to the irregularities of the locations of the government corners in Section 6, he obtained a sworn statement from the land owner indicating the corner was in the correct location based on a bearing that the land owner had seen.

Knower's bearing tree no long exists.

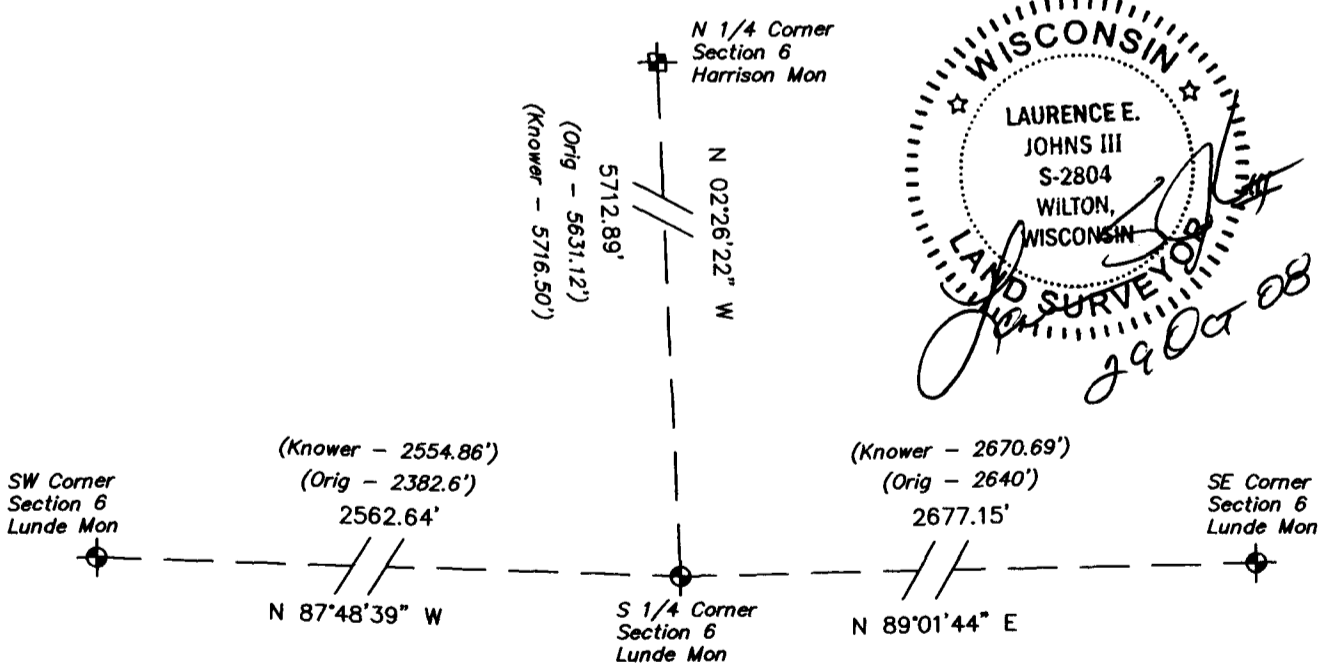
RECORD OF DURABLE WITNESS MONUMENTS

NO	DESCRIPTION	BEARING	DISTANCE
1	Set 3/4" x 18" Iron Rod In Fence Line	N 02°45'44" E	63.99'
2	Set 3/4" x 18" Iron Rod	N 75°38'51" E	29.48'
3	Set 3/4" x 18" Iron Rod In Fence Line	S 05°46'47" W	88.24'
4	Set 3/4" x 18" Iron Rod Next to Old Down Fence	S 73°04'06" W	19.41'

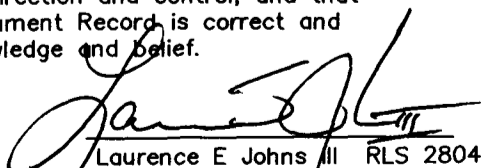


PLAN VIEW DRAWING OF REFERENCE TIES

Map Showing Distance And Direction To Other Public Land Survey
Corners Used For Re-Establishing The Corner



I, Laurence E Johns III RLS 2804, Registered Land Surveyor,
herby certify that the corner location shown on this record was
determined by me or under my direction and control, and that
this U.S. Public Land Survey Monument Record is correct and
complete to the best of my knowledge and belief.

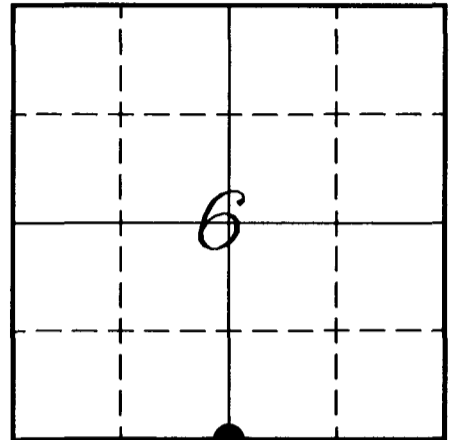

 Laurence E Johns III RLS 2804
 Eagle Ridge Surveying
 PO Box 213
 Wilton, Wisconsin
 29 October 2008

VERNON COUNTY COORDINATE SUBMISSION FORM
 "As An Addendum To"
VERNON COUNTY
CERTIFIED U.S. PUBLIC LAND SURVEY MONUMENT RECORD

INSTRUCTIONS: THIS RECORD FORM SHOULD BE USED WHEN COORDINATES ARE PROVIDED FOR A PUBLIC LAND SURVEY CORNER AND SHALL INCLUDE ALL OF THE FOLLOWING ELEMENTS (A-D)

(A) IDENTIFY THE CORNER BY REFERENCE TO THE U.S. PUBLIC LAND SURVEY SYSTEM IN DIAGRAM AT RIGHT

● = CORNER MONUMENT



T 14 N, R 2 W

(B) COORDINATES:

GEOGRAPHIC (Degrees Minutes Seconds)

LATITUDE: 43° 42' 38.5273" N

LONGITUDE: 90° 39' 40.1468" W

ELLIPSOID HT (m): _____

DATUM: NAD 1983 (2007)

GEOID99 ADJ: -33.441

ORTHOMETRIC HT: _____

VERNON COUNTY (U.S. FEET)

Coord Quality (+/-)

NORTHING (Y): 205424.394 _____

EASTING (X): 762308.413 _____

GPS METHOD USED TO COMPUTE COORDINATES (check as applicable)

- RTK Single Observation Average Observations
 Static Baseline Single Baseline Averaged Baselines OPUS Solution

BASE CONTROL USED FOR COORDINATE COMPUTATION

Station Name	Station Coordinates (Lat/Long)
<u>SHELDON SW</u>	<u>43° 43' 53.343" N 90° 40' 06.960" W</u>
	<u>N - 212997.513 E - 760328.461</u>

* Please List Additional Control Stations Used on Back of Form

Was a Least Squares Adjustment Used to Compute Coordinates? Yes / No

Date(s) of GPS Observations: 9 OCTOBER 2008 28 OCTOBER 2008

(C) REASON FOR COORDINATES SUBMITTAL (check one)

- Being Filed With a New U.S. PLS Monument Record
 To Correct the Coordinates Listed on a Previously Filed PLS Monument Record
 To Provide Coordinates for Previously Filed PLS Monument Record without Coordinates
 To Provide Supplemental Coordinates for a Previously Filed PLS Monument Record


MOST RECENT PLS MONUMENT RECORD DATE:

R.L.S. WHO CREATED MOST RECENT PLS MONUMENT RECORD:

(D) AGENT(S) PERFORMING GPS OBSERVATIONS & COORDINATE COMPUTATION

- 1) LAURENCE E JOHNS III
 2) _____

I, LAURENCE E JOHNS III RLS 2804, REGISTERED LAND SURVEYOR, HEREBY CERTIFY THAT THE COORDINATES PROVIDED ON THIS RECORD WERE DETERMINED BY ME OR UNDER MY DIRECTION AND CONTROL AND THAT THIS COORDINATE SUBMISSION FORM IS CORRECT AND COMPLETE TO THE BEST OF MY KNOWLEDGE AND BELIEF.


 Laurence E Johns III RLS 2804
 Eagle Ridge Surveying
 PO Box 213
 Wilton, Wisconsin
 29 October 2008

