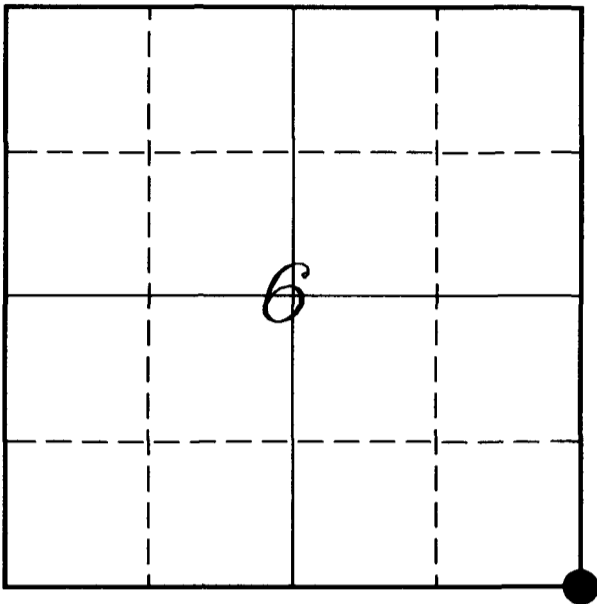


---

# U. S. PUBLIC LAND SURVEY MONUMENT RECORD

---

## SECTION 6, T14N, R2W, TOWN OF WHITESTOWN VERNON COUNTY, WISCONSIN



**LOCATION OF LANDMARK**

Crew: Laurence E Johns III  
Andy Anderson

Date: 29 October 2008

VERNON COUNTY COORDINATE SYSTEM	
Northing	205469.771
Easting	764985.174
Elevation	
TYPE OF LANDMARK:	
Set Lunde Monument	
BEARINGS ARE REFERENCED TO:	
Vernon County Coordinates	

---

*Describe any record evidence, monument evidence, testimonial evidence or any other material evidence you considered and whether the monument was found or restored through acceptance of an obliterated evidence location.*

Noah Phelps subdivided the township in June 1847.

Wm Knower resurveyed Sections 5, 6, 7 & 8 in Feb 1882.

It is my belief that the fences located within Section 6 were placed based on Knower's survey.

Even though the distance to the SE Corner of Section 5 is very short, the intersection of fences fit very well with the distances shown on Knower's survey within Section 6.

Accepted the intersection of fences as the best available evidence of the original government corner.

---

*Describe or show any material discrepancy between the location of the restored corner and that of the corner previously restored or re-established.*

Wm Knower recovered the stump of the original bearing

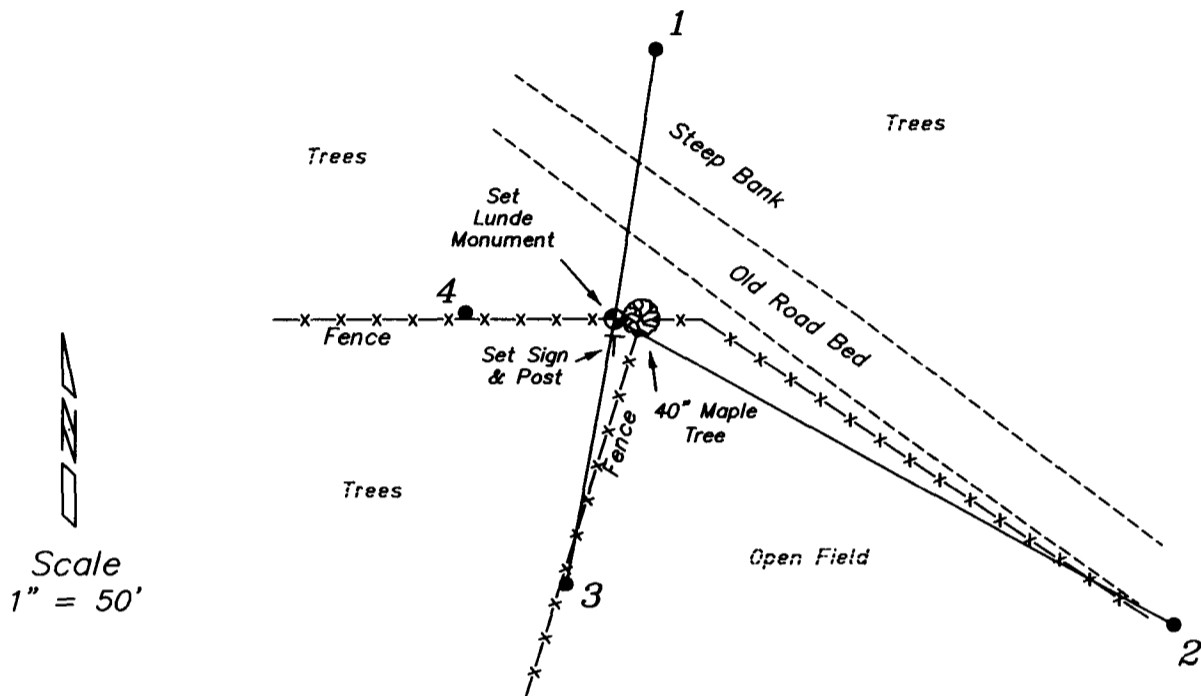
Due to the irregularities of the locations of the government corners in Section 6, he obtained a sworn statement for the land owner indicating the bearing tree stump that he had found at this location was the correct bearing tree.

Knower's bearing tree no long exists, it falls in middle of the old road bed.

No other surveys tied to this corner since.

# RECORD OF DURABLE WITNESS MONUMENTS

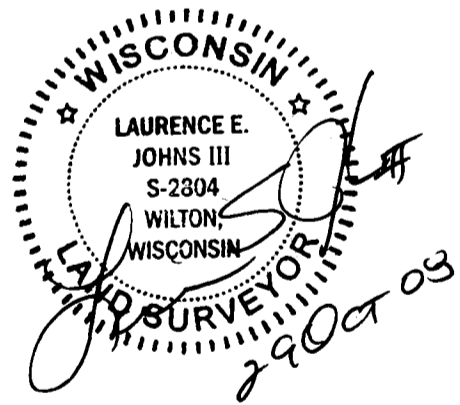
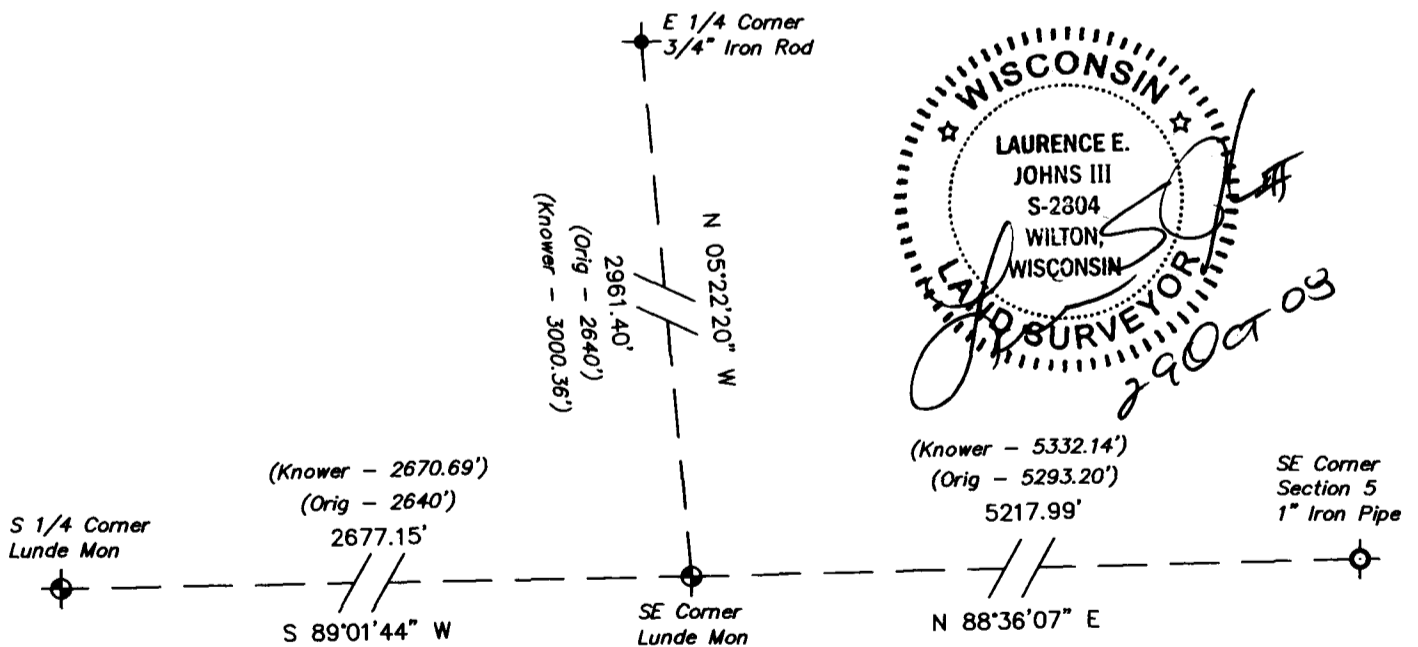
NO	DESCRIPTION	BEARING	DISTANCE
1	Set 3/4" x 18" Iron Rod	N 08°38'25" E	70.96'
2	Set 3/4" x 18" Iron Rod	S 61°26'28" E	165.98'
3	Set 3/4" x 18" Iron Rod In Fence Line	S 10°18'01" W	69.69'
4	Set 3/4" x 18" Iron Rod In Fence Line	N 87°36'52" W	38.81'



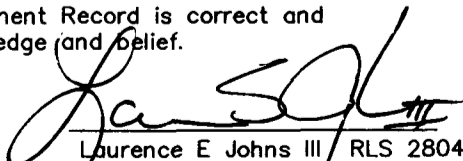
Scale  
1" = 50'

## PLAN VIEW DRAWING OF REFERENCE TIES

Map Showing Distance And Direction To Other Public Land Survey  
Corners Used For Re-Establishing The Corner



I, Laurence E Johns III RLS 2804, Registered Land Surveyor, hereby certify that the corner location shown on this record was determined by me or under my direction and control, and that this U.S. Public Land Survey Monument Record is correct and complete to the best of my knowledge and belief.

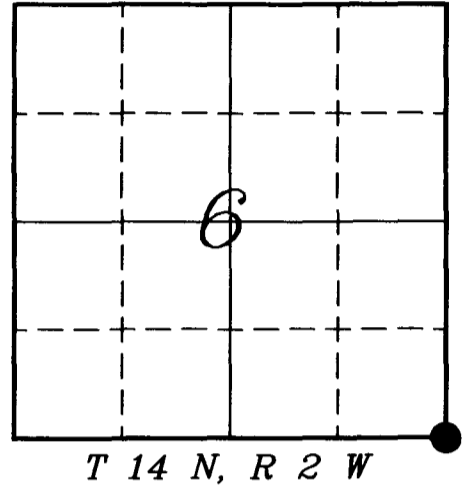
  
 Laurence E Johns III RLS 2804  
 Eagle Ridge Surveying  
 PO Box 213  
 Wilton, Wisconsin  
 29 October 2008

**VERNON COUNTY COORDINATE SUBMISSION FORM**  
 "As An Addendum To"  
**VERNON COUNTY**  
**CERTIFIED U.S. PUBLIC LAND SURVEY MONUMENT RECORD**

INSTRUCTIONS: THIS RECORD FORM SHOULD BE USED WHEN COORDINATES ARE PROVIDED FOR A PUBLIC LAND SURVEY CORNER AND SHALL INCLUDE ALL OF THE FOLLOWING ELEMENTS (A-D)

(A) IDENTIFY THE CORNER BY REFERENCE TO THE U.S. PUBLIC LAND SURVEY SYSTEM IN DIAGRAM AT RIGHT

● = CORNER MONUMENT



(B) COORDINATES:

GEOGRAPHIC (Degrees Minutes Seconds)

LATITUDE: 43° 42' 38.9350" N  
 LONGITUDE: 90° 39' 03.7039" W  
 ELLIPSOID HT (m): \_\_\_\_\_  
 DATUM: NAD 1983 (2007)  
 GEOID99 ADJ: -33.4167  
 OTHROMETRIC HT: \_\_\_\_\_

VERNON COUNTY (U.S. FEET)

Coord Quality (+/-)

NORTHING (Y): 205469.771 \_\_\_\_\_  
 EASTING (X): 764985.174 \_\_\_\_\_

GPS METHOD USED TO COMPUTE COORDINATES (check as applicable)

RTK                       Single Observation     Averaged Observations  
 Static Baseline     Single Baseline        Averaged Baselines     OPUS Solution

BASE CONTROL USED FOR COORDINATE COMPUTATION

Station Name	Station Coordinates (Lat/Long)
<u>SHELDON SW</u>	<u>43° 43' 53.343" N 90° 40' 06.960" W</u>
	<u>N - 212997.513 E - 760328.461</u>

\* Please List Additional Control Stations Used on Back of Form

Was a Least Squares Adjustment Used to Compute Coordinates? Yes /  No

Date(s) of GPS Observations: 8 OCTOBER 2008      28 OCTOBER 2008

(C) REASON FOR COORDINATES SUBMITTAL (check one)

Being Filed With a New U.S. PLS Monument Record  
 To Correct the Coordinates Listed on a Previously Filed PLS Monument Record  
 To Provide Coordinates for Previously Filed PLS Monument Record without Coordinates  
 To Provide Supplemental Coordinates for a Previously Filed PLS Monument Record

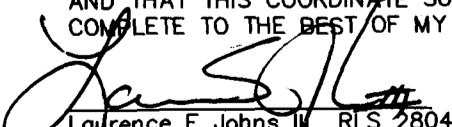
MOST RECENT PLS MONUMENT RECORD DATE:

R.L.S. WHO CREATED MOST RECENT PLS MONUMENT RECORD:

(D) AGENT(S) PERFORMING GPS OBSERVATIONS & COORDINATE COMPUTATION

1) LAURENCE E JOHNS III  
 2) \_\_\_\_\_

I, LAURENCE E JOHNS III RLS 2804, REGISTERED LAND SURVEYOR, HEREBY CERTIFY THAT THE COORDINATES PROVIDED ON THIS RECORD WERE DETERMINED BY ME OR UNDER MY DIRECTION AND CONTROL AND THAT THIS COORDINATE SUBMISSION FORM IS CORRECT AND COMPLETE TO THE BEST OF MY KNOWLEDGE AND BELIEF.

  
 Laurence E Johns III RLS 2804  
 Eagle Ridge Surveying  
 PO Box 213  
 Wilton, Wisconsin  
 29 October 2008

