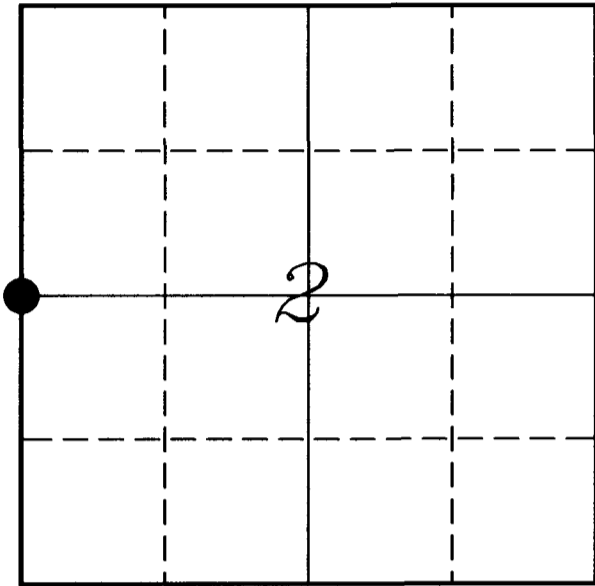


---

U. S. PUBLIC LAND SURVEY MONUMENT RECORD

---

SECTION 2, T14N, R2W, TOWN OF WHITESTOWN  
VERNON COUNTY, WISCONSIN



VERNON COUNTY COORDINATE SYSTEM	
Northing	208308.62
Easting	780508.02
Elevation	
TYPE OF LANDMARK:	
US Army Corps of Engineer Monument	
BEARINGS ARE REFERENCED TO:	
Vernon County Coordinates	

**LOCATION OF LANDMARK**

Crew: Laurence E Johns III

Date: 13 September 2008

---

*Describe any record evidence, monument evidence, testimonial evidence or any other material evidence you considered and whether the monument was found or restored through acceptance of an obliterated evidence location.*

The two original bearing trees were not located.

Accepted the location of the Brass Capped Monument set by Ralph Van Dorpe as the best available evidence of the original corner.

---

*Describe or show any material discrepancy between the location of the restored corner and that of the corner previously restored or re-established.*

Wm Knower was here in June 1878, during a survey of Section 3, but did not show that he tied the corner or that he found the Government corner.

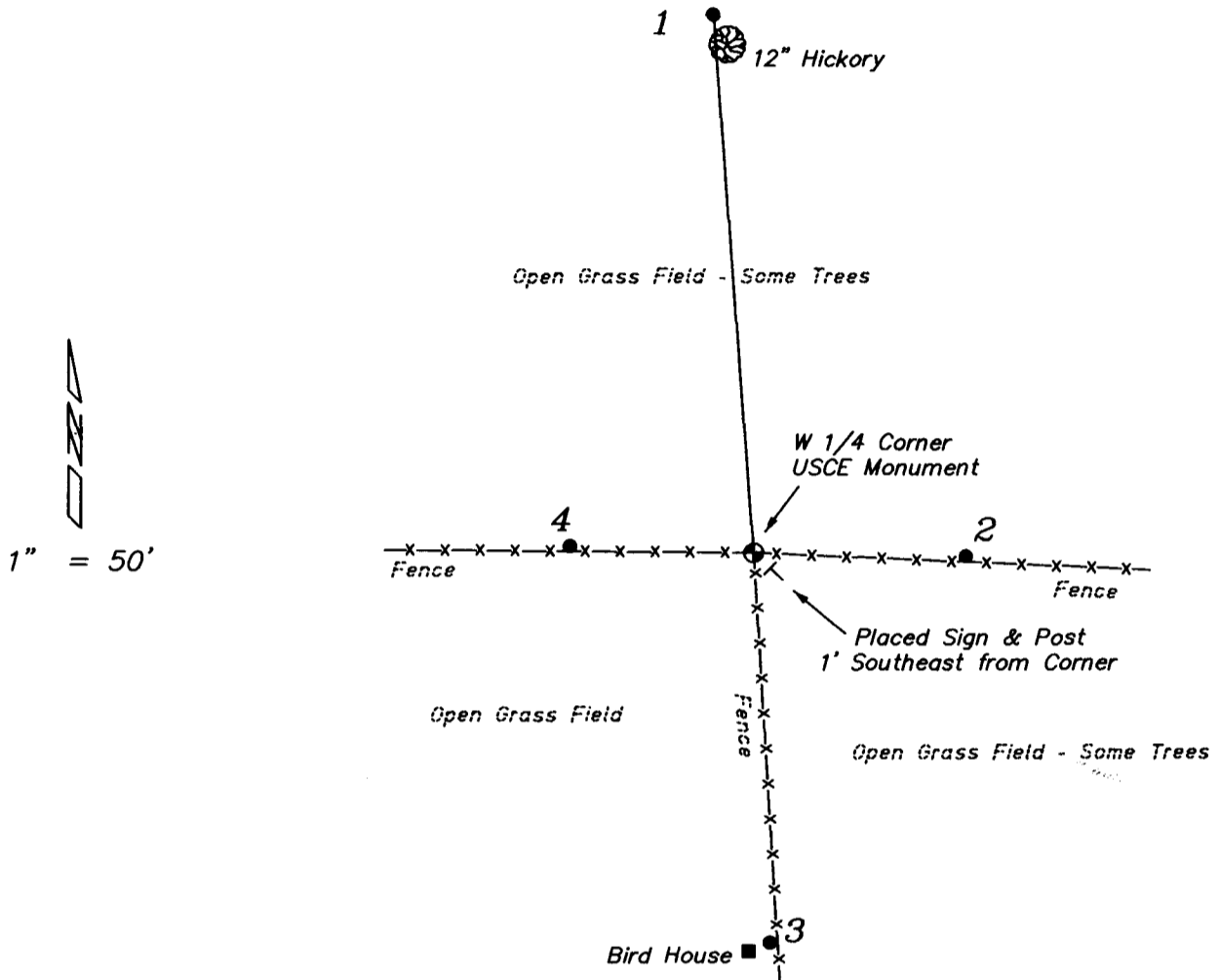
Ralph Van Dorpe, an Illinois Registered Surveyor, in surveying for the Army Corps of Engineers set a Brass Capped Monument at this location in 1965.

Rodney Maxwell used this corner in April 1998 while conducting a survey.

Rodney Maxwell was here again in September 1999 while conducting a survey.

# RECORD OF DURABLE WITNESS MONUMENTS

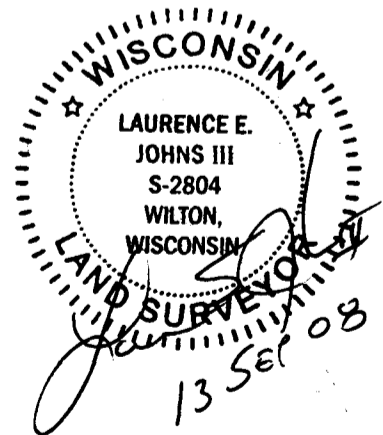
NO	DESCRIPTION	BEARING	DISTANCE
1	Set 3/4" x 18" Iron Rod North Side of 12" Hickory	N 04°17'18" W	143.97'
2	Set 3/4" x 18" Iron Rod In Fence Line	S 87°27'48" E	56.07'
3	Set 3/4" x 18" Iron Rod In Fence Line by Bird House	S 03°27'09" E	104.87'
4	Set 3/4" x 18" Iron Rod In Fence Line	N 89°28'43" W	48.72'



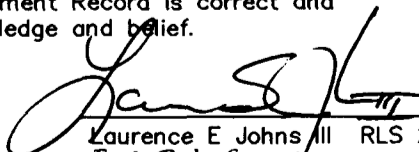
## PLAN VIEW DRAWING OF REFERENCE TIES

*Map Showing Distance And Direction To Other Public Land Survey Corners Used For Re-Establishing The Corner*

None



I, Laurence E Johns III RLS 2804, Registered Land Surveyor, hereby certify that the corner location shown on this record was determined by me or under my direction and control, and that this U.S. Public Land Survey Monument Record is correct and complete to the best of my knowledge and belief.

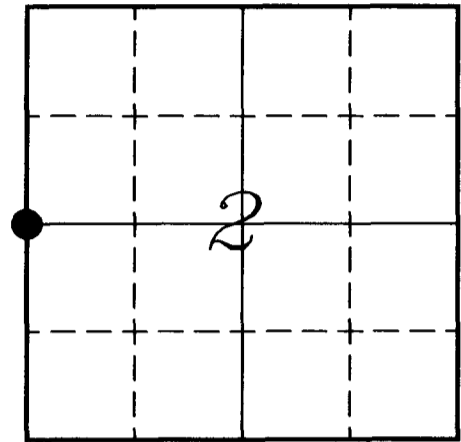
  
 Laurence E Johns III RLS 2804  
 Eagle Ridge Surveying  
 PO Box 213  
 Wilton, Wisconsin  
 13 September 2008

**VERNON COUNTY COORDINATE SUBMISSION FORM**  
**"As An Addendum To"**  
**VERNON COUNTY**  
**CERTIFIED U.S. PUBLIC LAND SURVEY MONUMENT RECORD**

INSTRUCTIONS: THIS RECORD FORM SHOULD BE USED WHEN COORDINATES ARE PROVIDED FOR A PUBLIC LAND SURVEY CORNER AND SHALL INCLUDE ALL OF THE FOLLOWING ELEMENTS (A-D)

(A) IDENTIFY THE CORNER BY REFERENCE TO THE U.S. PUBLIC LAND SURVEY SYSTEM IN DIAGRAM AT RIGHT

● = CORNER MONUMENT



T 14 N, R 2 W

(B) COORDINATES:

GEOGRAPHIC (Degrees Minutes Seconds)

LATITUDE: 43° 43' 06.67" N

LONGITUDE: 90° 35' 32.28" W

ELLIPSOID HT (m): \_\_\_\_\_

DATUM: NAD 1983

GEOID99 ADJ: -33.6133

ORTHOMETRIC HT: \_\_\_\_\_

VERNON COUNTY (U.S. FEET)

Coord Quality (+/-)

NORTHING (Y): 208308.622

EASTING (X): 780508.017

GPS METHOD USED TO COMPUTE COORDINATES (check as applicable)

- RTK                       Single Observation     Average Observations  
 Static Baseline     Single Baseline         Averaged Baselines     OPUS Solution

BASE CONTROL USED FOR COORDINATE COMPUTATION

Station Name	Station Coordinates (Lat/Long)
<u>NW CORNER - SECTION 2</u>	<u>43° 43' 33.3" N 90° 35' 31.8" W</u>

\* Please List Additional Control Stations Used on Back of Form

Was a Least Squares Adjustment Used to Compute Coordinates? Yes /  No

Date(s) of GPS Observations: 12 September 2008

(C) REASON FOR COORDINATES SUBMITTAL (check one)

- Being Filed With a New U.S. PLS Monument Record  
 To Correct the Coordinates Listed on a Previously Filed PLS Monument Record  
 To Provide Coordinates for Previously Filed PLS Monument Record without Coordinates  
 To Provide Supplemental Coordinates for a Previously Filed PLS Monument Record

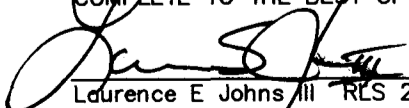
MOST RECENT PLS MONUMENT RECORD DATE:

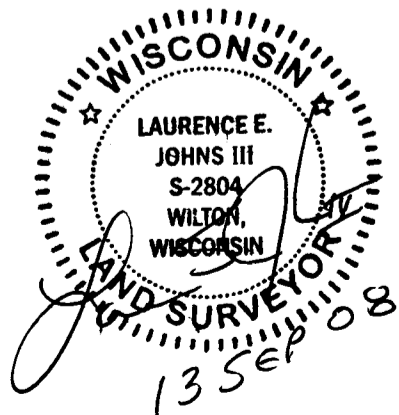
R.L.S. WHO CREATED MOST RECENT PLS MONUMENT RECORD:

(D) AGENT(S) PERFORMING GPS OBSERVATIONS & COORDINATE COMPUTATION

- 1) LAURENCE E JOHNS III  
 2) \_\_\_\_\_

I, LAURENCE E JOHNS III RLS 2804, REGISTERED LAND SURVEYOR, HEREBY CERTIFY THAT THE COORDINATES PROVIDED ON THIS RECORD WERE DETERMINED BY ME OR UNDER MY DIRECTION AND CONTROL AND THAT THIS COORDINATE SUBMISSION FORM IS CORRECT AND COMPLETE TO THE BEST OF MY KNOWLEDGE AND BELIEF.

  
 Laurence E Johns III RLS 2804  
 Eagle Ridge Surveying  
 PO Box 213  
 Wilton, Wisconsin  
 13 September 2008

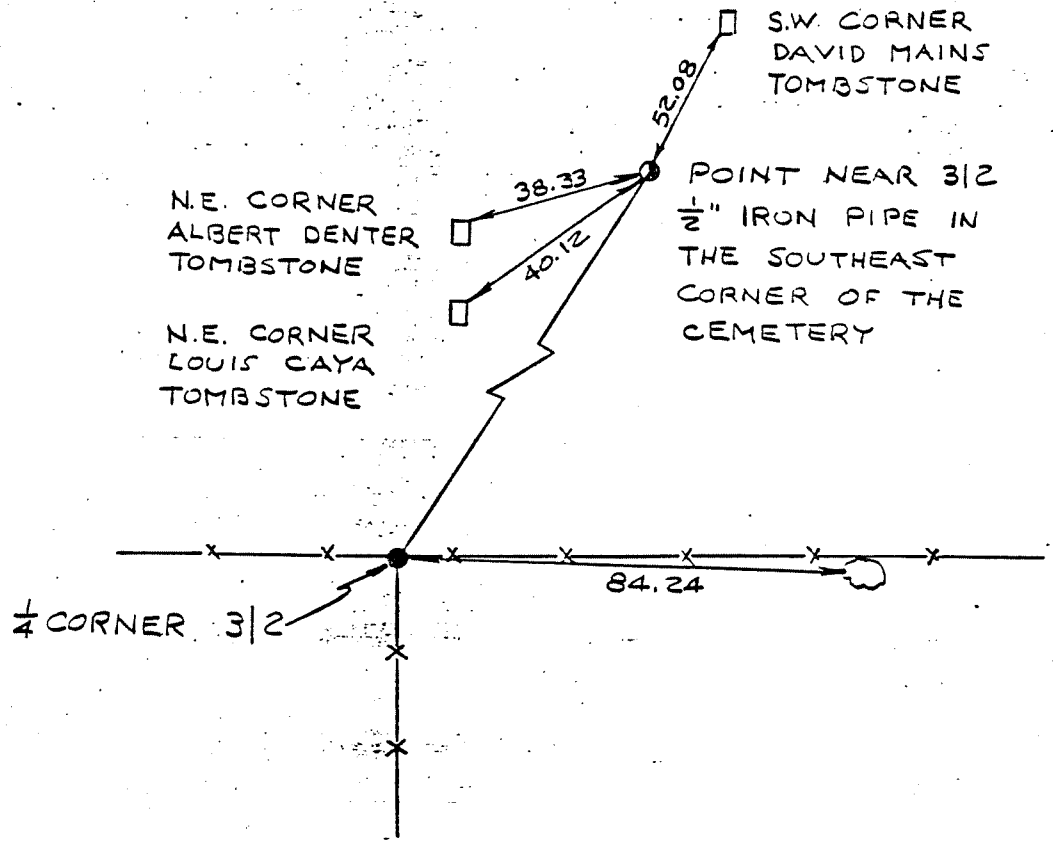


COUNTRY U. S. A.		TYPE OF MARK 2" IRON PIPE WITH BRASS CAP		STATION 1/4 CORNER 3/2		T. 14 N. R. 2 W.	
LOCALITY LA FARGE, WIS.		STAMPING ON MARK 3/2		AGENCY (CAST IN MARKS) CORPS OF ENGRS.		ELEVATION (FT) (M)	
LATITUDE		LONGITUDE		DATUM		DATUM	
(NORTHING)(EASTING) (FT) (M)	(EASTING)(NORTHING) (FT) (M)	GRID AND ZONE		ESTABLISHED BY (AGENCY)		CHICAGO DISTRICT	
626, 911.18	1, 843, 442.73	WIS. (SOUTH)		DATE		ORDER	
(NORTHING)(EASTING) (FT) (M)	(EASTING)(NORTHING) (FT) (M)	GRID AND ZONE		1965			

TO OBTAIN GRID AZIMUTH, ADD TO THE GEODETIC AZIMUTH  
 TO OBTAIN GRID AZ. (ADD)(SUB.) TO THE GEODETIC AZIMUTH

OBJECT	AZIMUTH OR DIRECTION (GEODETIC)(GRID) (MAGNETIC)	BACK AZIMUTH	GEOD. DISTANCE		GRID DISTANCE	
			(METERS)	(FEET)	(METERS)	(FEET)
POINT NEAR 3/2	N. 31°-56'-52" E					433.54
REF. NO. 1	S. 85°-17'-48" E.					84.24

REFERENCE DISTANCES ARE HORIZONTAL. REFERENCE TREE IS BLAZED & SCRIBED B.



SKETCH