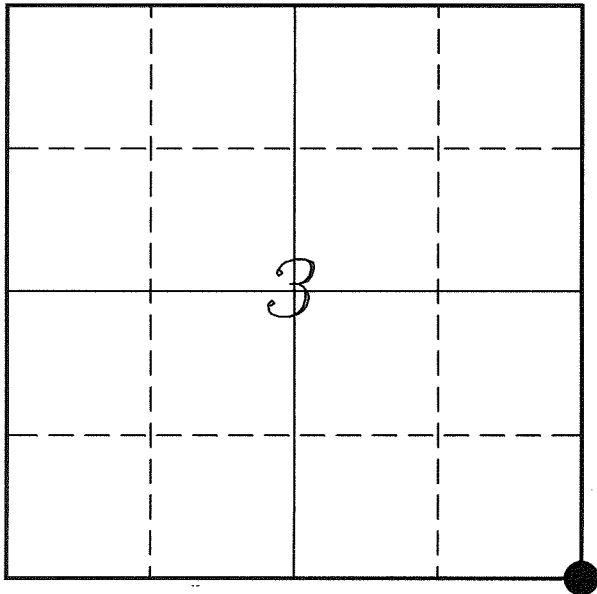


---

# U. S. PUBLIC LAND SURVEY MONUMENT RECORD

---

## SECTION 3, T14N, R2W, TOWN OF WHITESTOWN VERNON COUNTY, WISCONSIN



LOCATION OF LANDMARK

VERNON COUNTY COORDINATE SYSTEM	
Northing	205644.165
Easting	780505.747
Datum	NAD 1983 (2007)
Elevation	
Datum	
TYPE OF LANDMARK: US Army Corps of Engineer Monument (USCE)	
BEARINGS ARE REFERENCED TO: Vernon County Coordinates	

Crew: Laurence E Johns III  
Larry Handschy

Date: 2 October 2010

---

*Describe any record evidence, monument evidence, testimonial evidence or any other material evidence you considered and whether the monument was found or restored through acceptance of an obliterated evidence location.*

No bearing trees of record were found.

I found the USCE Monument set by Van Dorpe and used by Dechant.

The distance to the West matches Knower's very well but is a bit short of Knower's distance to the North.

Since the Brass Capped USCE Monument was based on occupation and does match Knower's fairly well and has been used in the past, I accepted it as the best available evidence of the original corner.

---

*Describe or show any material discrepancy between the location of the restored corner and that of the corner previously restored or re-established.*

Noah Phelps established this corner in October 1847.

Wm Knower was here, in June 1878, during a survey in Section 3. He re-established the corner by lost corner methods.

Wm Knower was here again, in May 1888, during a survey in Section 10. He shows this corner as being from a former survey.

Ralph Van Dorpe (Illinois Surveyor) was here, in February 1966, during the survey for the US Army Corps of Engineers, for the Kickapoo Reservoir Project. He re-established this corner from occupation and set a brass-capped Iron Pipe at the corner.

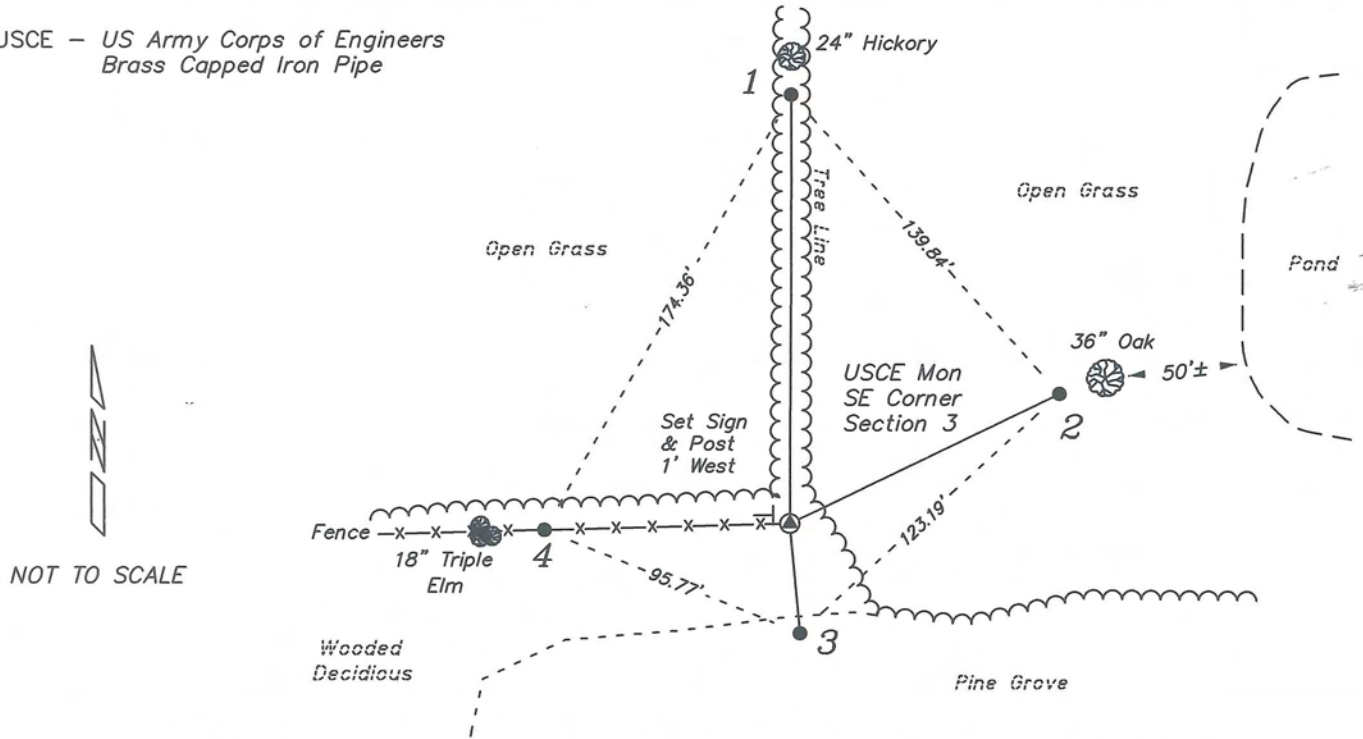
It appears Michael Miller was here, in March 1978, during a survey in Section 10.

Gary Dechant was here, in April 2003, during a survey in Section 11. He found the USCE Monument and used it in his survey.

# RECORD OF DURABLE WITNESS MONUMENTS

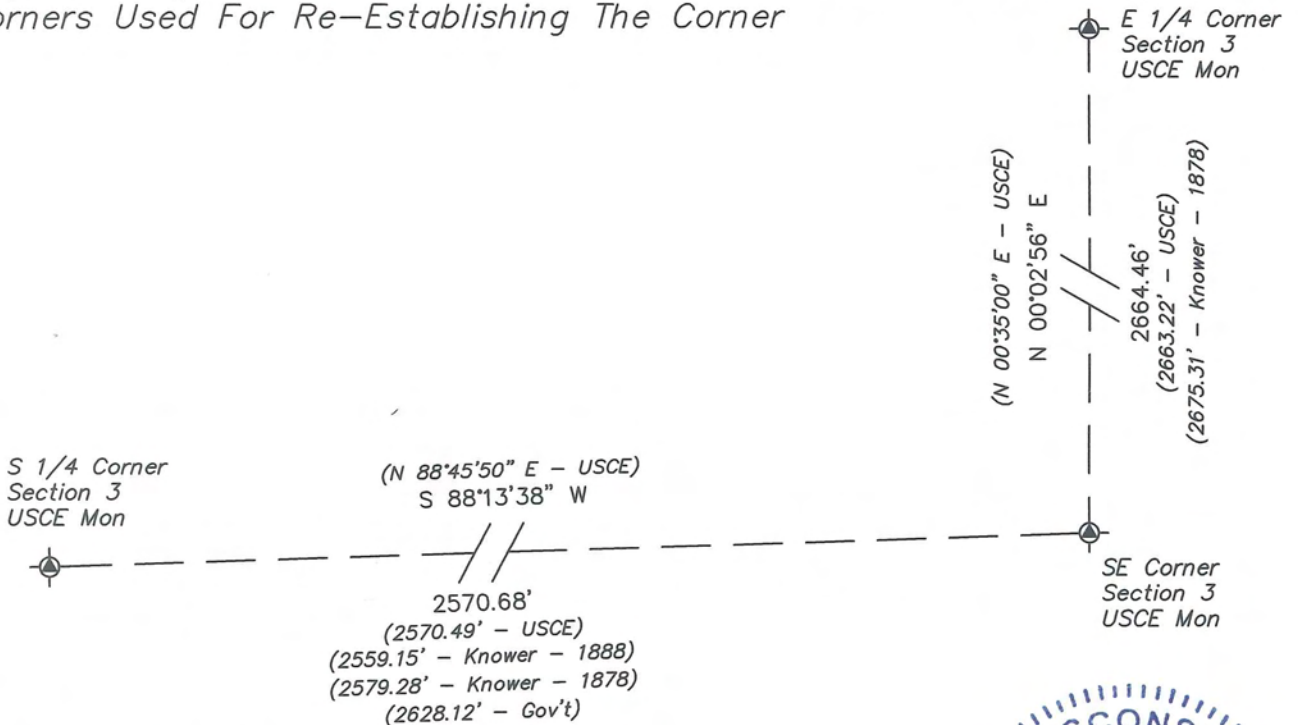
NO	DESCRIPTION	BEARING	DISTANCE
1	Set 3/4" x 18" Iron Rod 2' South of 24" Hickory	N 00°10'11" E	149.64'
2	Set 3/4" x 18" Iron Rod 5' West of 36" White Oak	N 64°07'32" E	104.15'
3	Set 3/4" x 18" Iron Rod	S 05°05'49" E	38.51'
4	Set 3/4" x 18" Iron Rod 5' East of 18" Triple Elm	S 88°31'16" W	85.29'

USCE - US Army Corps of Engineers  
Brass Capped Iron Pipe

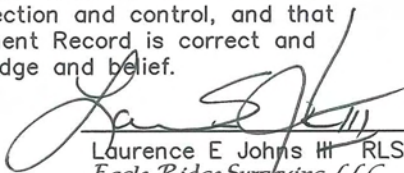


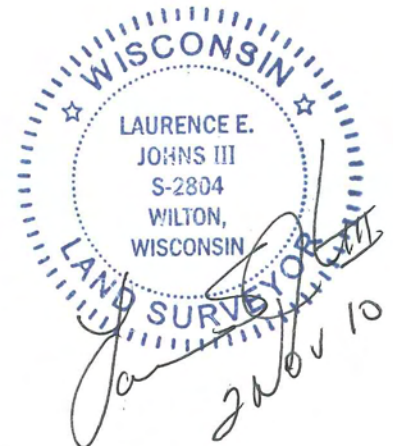
## PLAN VIEW DRAWING OF REFERENCE TIES

Map Showing Distance And Direction To Other Public Land Survey  
Corners Used For Re-Establishing The Corner



I, Laurence E Johns III RLS 2804, Registered Land Surveyor, hereby certify that the corner location shown on this record was determined by me or under my direction and control, and that this U.S. Public Land Survey Monument Record is correct and complete to the best of my knowledge and belief.

  
 Laurence E Johns III RLS 2804  
 Eagle Ridge Surveying, LLC  
 PO Box 213  
 Wilton, Wisconsin  
 2 November 2010

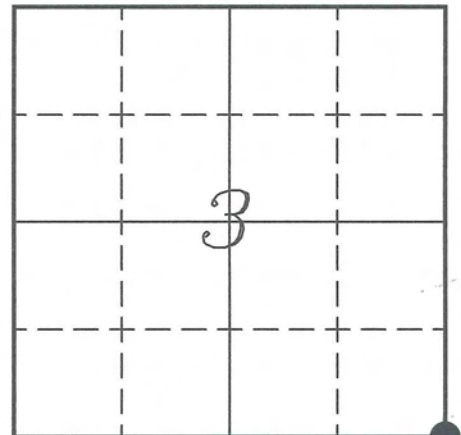


**VERNON COUNTY COORDINATE SUBMISSION FORM**  
 "As An Addendum To"  
**VERNON COUNTY**  
**CERTIFIED U.S. PUBLIC LAND SURVEY MONUMENT RECORD**

INSTRUCTIONS: THIS RECORD FORM SHOULD BE USED WHEN COORDINATES ARE PROVIDED FOR A PUBLIC LAND SURVEY CORNER AND SHALL INCLUDE ALL OF THE FOLLOWING ELEMENTS (A-D)

(A) IDENTIFY THE CORNER BY REFERENCE TO THE U.S. PUBLIC LAND SURVEY SYSTEM IN DIAGRAM AT RIGHT

● = CORNER MONUMENT



T 14 N, R 2 W

(B) COORDINATES:

GEOGRAPHIC (Degrees Minutes Seconds)

LATITUDE: 43° 42' 40.3591" N

LONGITUDE: 90° 35' 32.3986" W

ELLIPSOID HT (m): \_\_\_\_\_

DATUM: NAD 1983 (2007)

GEOID03 ADJ: -33.615

ORTHOMETRIC HT: \_\_\_\_\_

VERNON COUNTY (U.S. FEET)

Coord Quality (+/-)

NORTHING (Y): 205644.165 \_\_\_\_\_

EASTING (X): 780505.747 \_\_\_\_\_

GPS METHOD USED TO COMPUTE COORDINATES (check as applicable)

- RTK Observations     Static Baselines     OPUS-RS Solution     OPUS-S Solution  
 Combination of GPS Observations & Conventional Procedures  
 Single Angle Measurement     Closed Traverse Loop

Was a Least Squares Adjustment Used to Compute Coordinates? Yes /  No

BASE CONTROL USED FOR COORDINATE COMPUTATION

Station Name	Station Coordinates	Date/Time
<u>OPUS STA - MELV</u>	<u>43° 42' 55.0133" N 90° 35' 57.8868" W</u>	<u>06/03/2010 - 10:42</u>
	<u>N - 207123.833 E - 778630.302</u>	
<u>Same</u>		<u>10/02/2010 - 11:25</u>

(C) REASON FOR COORDINATES SUBMITTAL (check one)

- Being Filed With a New U.S. PLS Monument Record  
 To Correct the Coordinates Listed on a Previously Filed PLS Monument Record  
 To Provide Coordinates for Previously Filed PLS Monument Record without Coordinates  
 To Provide Supplemental Coordinates for a Previously Filed PLS Monument Record

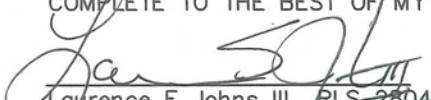
MOST RECENT PLS MONUMENT RECORD DATE:

R.L.S. WHO CREATED MOST RECENT PLS MONUMENT RECORD:

(D) AGENT(S) PERFORMING GPS OBSERVATIONS & COORDINATE COMPUTATION

- 1) LAURENCE E JOHNS III  
 2) \_\_\_\_\_

I, LAURENCE E JOHNS III RLS 2804, REGISTERED LAND SURVEYOR, HEREBY CERTIFY THAT THE COORDINATES PROVIDED ON THIS RECORD WERE DETERMINED BY ME OR UNDER MY DIRECTION AND CONTROL AND THAT THIS COORDINATE SUBMISSION FORM IS CORRECT AND COMPLETE TO THE BEST OF MY KNOWLEDGE AND BELIEF.

  
 Laurence E Johns III RLS 2804  
 Eagle Ridge Surveying, LLC  
 PO Box 213  
 Wilton, Wisconsin  
 2 November 2010

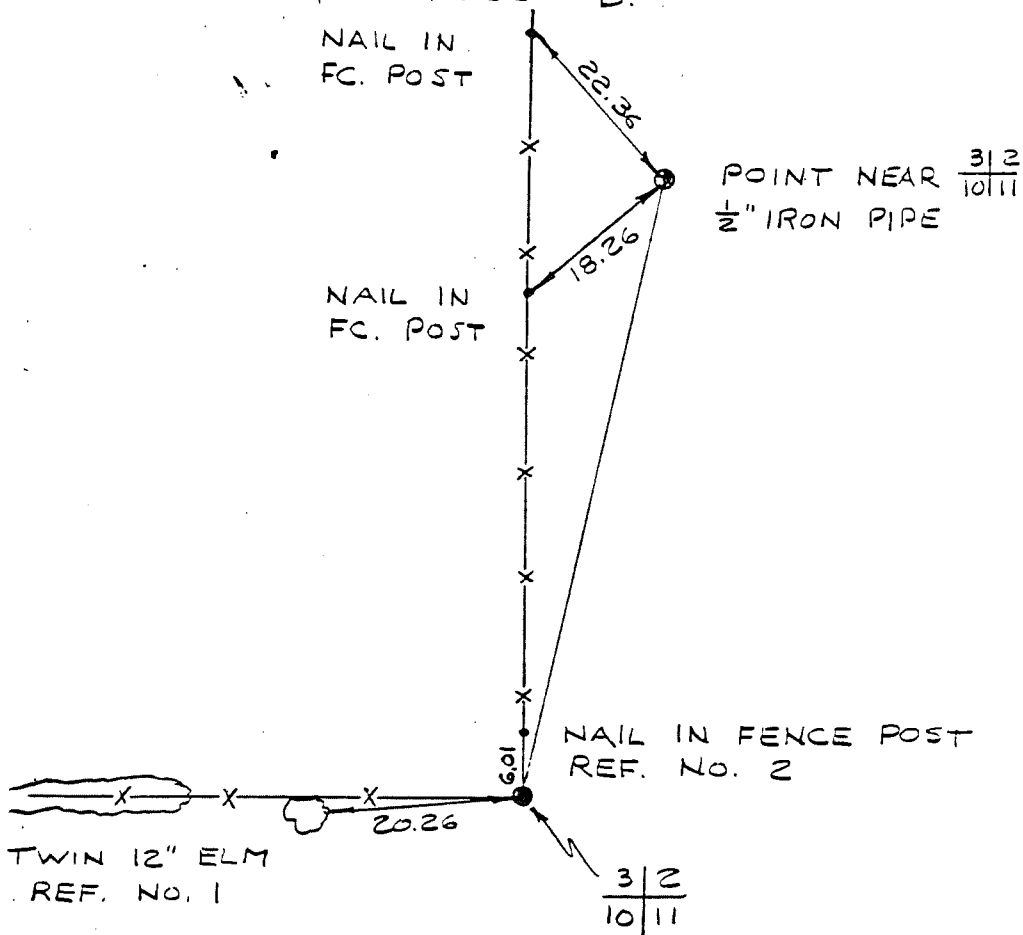


COUNTRY U. S. A.		TYPE OF MARK 2" IRON PIPE WITH BRASS CAP		STATION SECTION CORNER $\frac{312}{1011}$ - T. 14 N. R. 2 W	
LOCALITY LA FARGE, WIS.		STAMPING ON MARK $\frac{312}{1011}$		AGENCY (CAST IN MARKS) CORPS OF ENGRS.	
LATITUDE		LONGITUDE		DATUM	
(NORTHING)(EASTING) (FT)	(EASTING)(NORTHING) (FT)	GRID AND ZONE		ESTABLISHED BY (AGENCY) CHICAGO DISTRICT	
624,248.10 (M)	1,843,415.62 (M)	GRID AND ZONE		DATE 1965	ORDER

TO OBTAIN GRID AZIMUTH, ADD TO THE GEODETIC AZIMUTH  
TO OBTAIN GRID AZ. (ADD)(SUB.) TO THE GEODETIC AZIMUTH

OBJECT	AZIMUTH OR DIRECTION (GEODETIC) (GRID) (MAGNETIC)	BACK AZIMUTH	GEOD. DISTANCE (METERS) (FEET)	GRID DISTANCE (METERS) (FEET)
$\frac{312}{1011}$				
POINT NEAR $\frac{1011}{1011}$	N. 12°-10'-50" E.			65.39
REF. NO. 1	S. 85°-24'-50" W.			20.26
REF. NO. 2	N. 01°-00'-10" W.			6.01

REFERENCE DISTANCES ARE HORIZONTAL. REFERENCE TREE IS BLAZED & SCRIBED B.



SKETCH