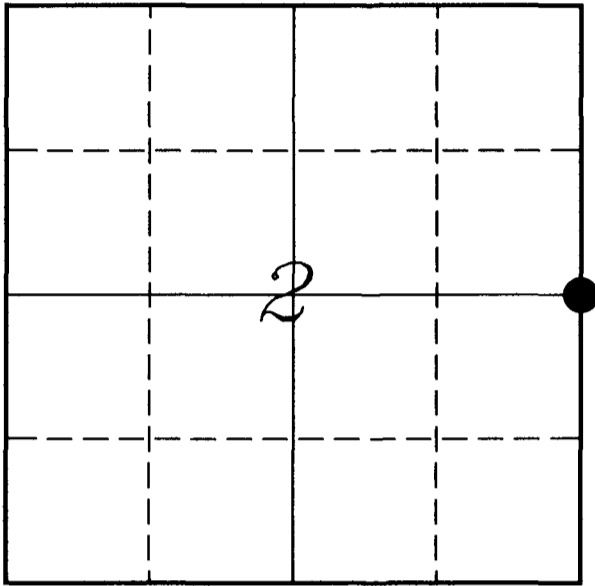

U. S. PUBLIC LAND SURVEY MONUMENT RECORD

SECTION 2, T14N, R2W, TOWN OF WHITESTOWN VERNON COUNTY, WISCONSIN



LOCATION OF LANDMARK

VERNON COUNTY COORDINATE SYSTEM	
Northing	208252.73
Easting	785810.47
Elevation	
TYPE OF LANDMARK:	
US Army Corps of Engineers Monument	
BEARINGS ARE REFERENCED TO:	
Vernon County Coordinates	

Crew: Laurence E Johns III
Larry Handschy

Date: 17 September 2008

Describe any record evidence, monument evidence, testimonial evidence or any other material evidence you considered and whether the monument was found or restored through acceptance of an obliterated evidence location.

The two Original bearing tree's were not located.

Ristow's bearing tree was not located.

Accepted the location of the Brass Capped Monument set by Ralph Van Dorpe as the best available evidence of the original corner.

Describe or show any material discrepancy between the location of the restored corner and that of the corner previously restored or re-established.

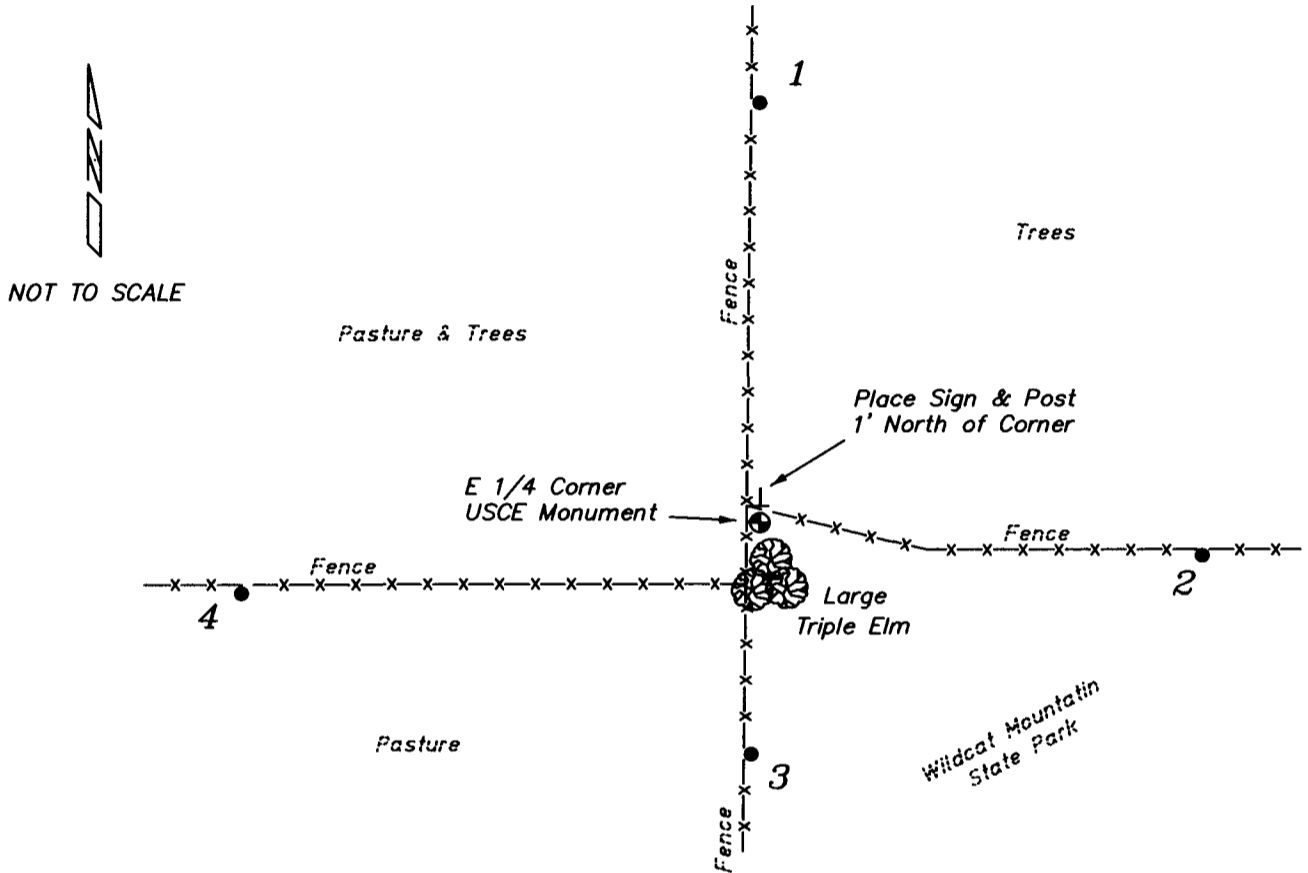
Alex Ristow was at this corner, in Jan 1906, during a survey of Section 1 and re-tied the corner.

Ralph Van Dorpe, an Illinois Registered Surveyor, in surveying for the Army Corps of Engineers set a Brass Capped Monument at this location in 1965.

No other record of this corner being used.

RECORD OF DURABLE WITNESS MONUMENTS

NO	DESCRIPTION	BEARING	DISTANCE
1	Set 3/4" x 18" Iron Rod In Fence Line	N 00°14'50" W	72.59'
2	Set 3/4" x 18" Iron Rod In Fence Line	S 86°41'18" E	78.32'
3	Set 3/4" x 18" Iron Rod In Fence Line	S 02°44'09" W	40.08'
4	Set 3/4" x 18" Iron Rod In Fence Line	S 83°21'11" W	90.17'

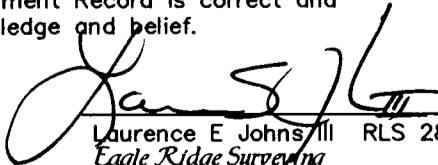


PLAN VIEW DRAWING OF REFERENCE TIES

Map Showing Distance And Direction To Other Public Land Survey
Corners Used For Re-Establishing The Corner

None

I, Laurence E Johns III RLS 2804, Registered Land Surveyor, hereby certify that the corner location shown on this record was determined by me or under my direction and control, and that this U.S. Public Land Survey Monument Record is correct and complete to the best of my knowledge and belief.


 Laurence E Johns III RLS 2804
 Eagle Ridge Surveying
 PO Box 213
 Wilton, Wisconsin
 17 September 2008

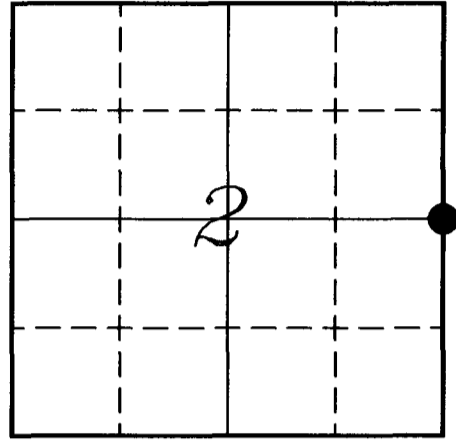


VERNON COUNTY COORDINATE SUBMISSION FORM
"As An Addendum To"
VERNON COUNTY
CERTIFIED U.S. PUBLIC LAND SURVEY MONUMENT RECORD

INSTRUCTIONS: THIS RECORD FORM SHOULD BE USED WHEN COORDINATES ARE PROVIDED FOR A PUBLIC LAND SURVEY CORNER AND SHALL INCLUDE ALL OF THE FOLLOWING ELEMENTS (A-D)

(A) IDENTIFY THE CORNER BY REFERENCE TO THE U.S. PUBLIC LAND SURVEY SYSTEM IN DIAGRAM AT RIGHT

● = CORNER MONUMENT



T 14 N, R 2 W

(B) COORDINATES:

GEOGRAPHIC (Degrees Minutes Seconds)

LATITUDE: 43° 43' 06.00" N

LONGITUDE: 90° 34' 20.09" W

ELLIPSOID HT (m): _____

DATUM: NAD 1983

GEOID99 ADJ: -33.6568

ORTHOMETRIC HT: _____

VERNON COUNTY (U.S. FEET)

Coord Quality (+/-)

NORTHING (Y): 208252.73 _____

EASTING (X): 785810.47 _____

GPS METHOD USED TO COMPUTE COORDINATES (check as applicable)

- RTK Single Observation Average Observations
 Static Baseline Single Baseline Averaged Baselines OPUS Solution

BASE CONTROL USED FOR COORDINATE COMPUTATION

Station Name	Station Coordinates (Lat/Long)
<u>NW CORNER - SECTION 2</u>	<u>43° 43' 33.3" N 90° 35' 31.8" W</u>

* Please List Additional Control Stations Used on Back of Form

Was a Least Squares Adjustment Used to Compute Coordinates? Yes / No

Date(s) of GPS Observations: 17 SEPTEMBER 2008

(C) REASON FOR COORDINATES SUBMITTAL (check one)

- Being Filed With a New U.S. PLS Monument Record
 To Correct the Coordinates Listed on a Previously Filed PLS Monument Record
 To Provide Coordinates for Previously Filed PLS Monument Record without Coordinates
 To Provide Supplemental Coordinates for a Previously Filed PLS Monument Record

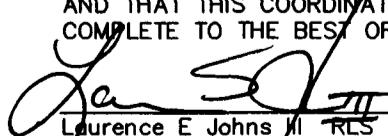
MOST RECENT PLS MONUMENT RECORD DATE:

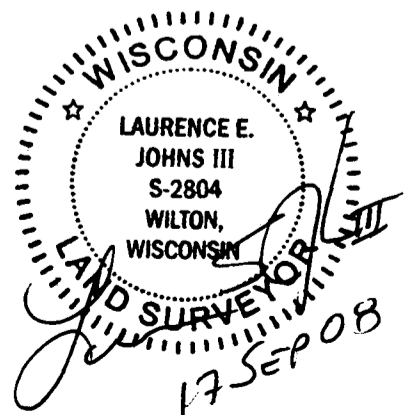
R.L.S. WHO CREATED MOST RECENT PLS MONUMENT RECORD:

(D) AGENT(S) PERFORMING GPS OBSERVATIONS & COORDINATE COMPUTATION

- 1) LAURENCE E JOHNS III
 2) _____

I, LAURENCE E JOHNS III RLS 2804, REGISTERED LAND SURVEYOR, HEREBY CERTIFY THAT THE COORDINATES PROVIDED ON THIS RECORD WERE DETERMINED BY ME OR UNDER MY DIRECTION AND CONTROL AND THAT THIS COORDINATE SUBMISSION FORM IS CORRECT AND COMPLETE TO THE BEST OF MY KNOWLEDGE AND BELIEF.

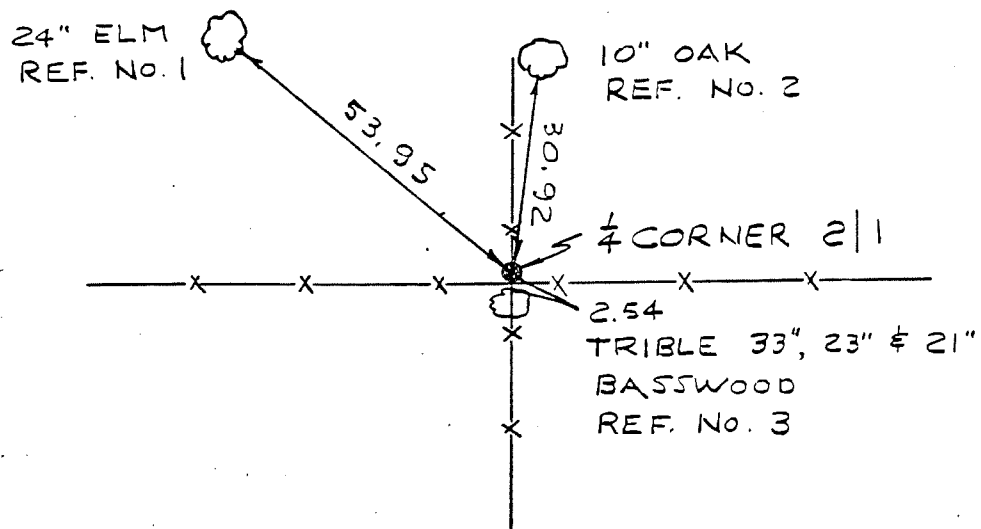

 Laurence E Johns III RLS 2804
 Eagle Ridge Surveying
 PO Box 213
 Wilton, Wisconsin
 17 September 2008



COUNTRY U. S. A.	TYPE OF MARK 2" IRON PIPE WITH BRASS CAP	STATION ¼ CORNER 2 1	T. 14 N. R. 2 W.
LOCALITY LA FARGE, WIS.	STAMPING ON MARK 2 1	AGENCY (CAST IN MARKS) CORPS OF ENGRS.	ELEVATION (FT) (M)
LATITUDE	LONGITUDE	DATUM	DATUM
(NORTHING)(EASTING) (FT) 626,805.83 (M)	(EASTING)(NORTHING) (FT) 1,848,743.96 (M)	GRID AND ZONE WIS. (SOUTH)	ESTABLISHED BY (AGENCY) CHICAGO DISTRICT
(NORTHING)(EASTING) (FT) (M)	(EASTING)(NORTHING) (FT) (M)	GRID AND ZONE	DATE 1965

TO OBTAIN	GRID AZIMUTH, ADD	TO THE GEODETIC AZIMUTH		
TO OBTAIN	GRID AZ. (ADD)(SUB.)	TO THE GEODETIC AZIMUTH		
OBJECT	AZIMUTH OR DIRECTION (GEODETIC)(GRID) (MAGNETIC)	BACK AZIMUTH	GEOD. DISTANCE (METERS) (FEET)	GRID DISTANCE (METERS) (FEET)
POINT NEAR 3 2	N. 84°-39'-45" W			5093.31
REF. No. 1	N. 49°-06'-05" W			53.95
REF. No. 2	N. 06°-28'-15" E			30.92
REF. No. 3	S. 00°-12'-45" E			2.54

REFERENCE DISTANCES ARE HORIZONTAL & TO NAILS IN TREES. TREES ARE BLAZED & SCRIBED E. SEE CARD FOR ¼ CORNER 3|2 FOR REFERENCES TO POINT NEAR 3|2.



SKETCH