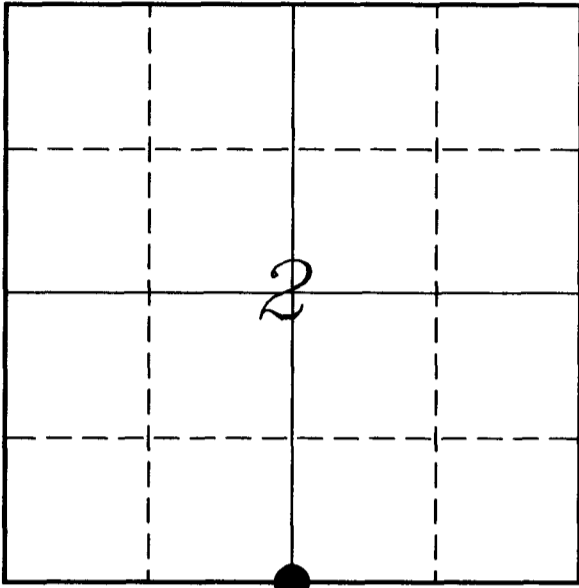

U. S. PUBLIC LAND SURVEY MONUMENT RECORD

SECTION 2, T14N, R2W, TOWN OF WHITESTOWN
VERNON COUNTY, WISCONSIN



LOCATION OF LANDMARK

Crew: Laurence E Johns III

Date: 17 September 2008

| VERNON COUNTY COORDINATE SYSTEM | |
|--|-----------|
| Northing | 205655.40 |
| Easting | 783184.36 |
| Elevation | |
| TYPE OF LANDMARK: | |
| US Army Corps of Engineers Monument | |
| BEARINGS ARE REFERENCED TO: | |
| Vernon County Coordinates | |

Describe any record evidence, monument evidence, testimonial evidence or any other material evidence you considered and whether the monument was found or restored through acceptance of an obliterated evidence location.

The two original bearings trees were not located.

Knower's two bearing trees were not located.

Accepted the location of the Brass Capped Monument set by Ralph Van Dorpe as the best available evidence of the original corner.

Describe or show any material discrepancy between the location of the restored corner and that of the corner previously restored or re-established.

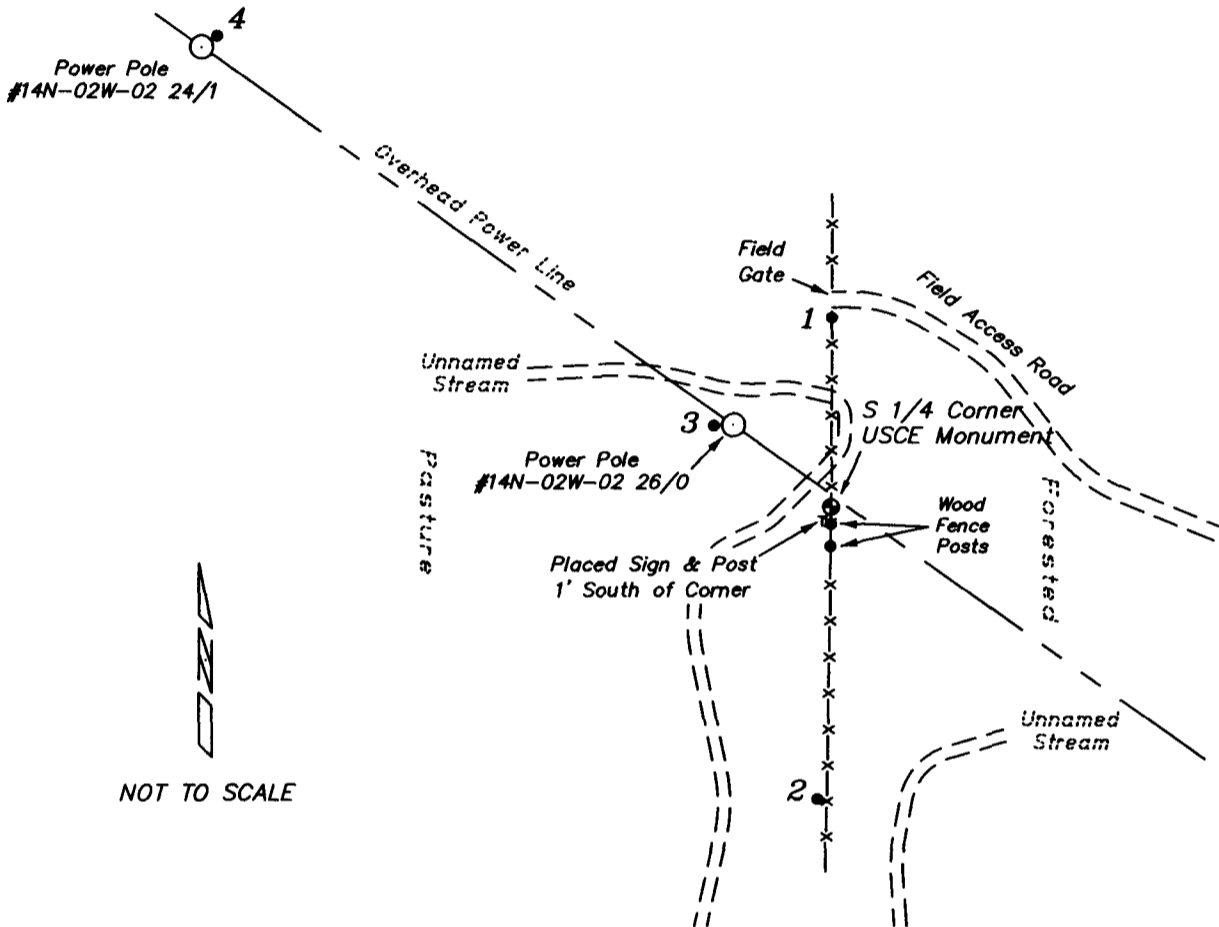
Wm Knower restored this corner, in May 1888, during a survey of Section 10.

Ralph Van Dorpe, an Illinois Registered Surveyor, in surveying for the Army Corps of Engineers set a Brass Capped Monument at this location in 1965.

No other record of this corner being used.

RECORD OF DURABLE WITNESS MONUMENTS

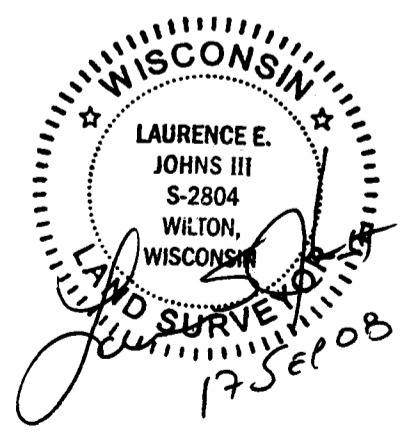
| NO | DESCRIPTION | BEARING | DISTANCE |
|----|---|---------------|----------|
| 1 | Set 3/4" x 18" Iron Rod South Post of Field Gate | N 00°04'27" E | 62.07' |
| 2 | Set 3/4" x 18" Iron Rod In Fence Line | S 02°31'50" W | 94.83' |
| 3 | Set 3/4" x 18" Iron Rod West Side of Power Pole #14N-02W-02 26/0 | N 55°30'06" W | 46.80' |
| 4 | Set 3/4" x 18" Iron Rod NE Side of Power Pole #14N-02W-02 24/1 | N 52°50'34" W | 252.28' |



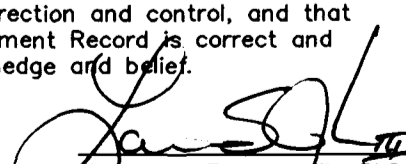
PLAN VIEW DRAWING OF REFERENCE TIES

Map Showing Distance And Direction To Other Public Land Survey Corners Used For Re-Establishing The Corner

None



I, Laurence E Johns III RLS 2804, Registered Land Surveyor, hereby certify that the corner location shown on this record was determined by me or under my direction and control, and that this U.S. Public Land Survey Monument Record is correct and complete to the best of my knowledge and belief.

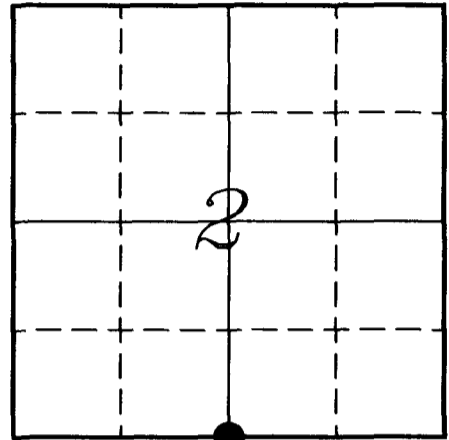

 Laurence E Johns III RLS 2804
 Eagle Ridge Surveying
 PO Box 213
 Wilton, Wisconsin
 17 September 2008

VERNON COUNTY COORDINATE SUBMISSION FORM
 "As An Addendum To"
VERNON COUNTY
CERTIFIED U.S. PUBLIC LAND SURVEY MONUMENT RECORD

INSTRUCTIONS: THIS RECORD FROM SHOULD BE USED WHEN COORDINATES ARE PROVIDED FOR A PUBLIC LAND SURVEY CORNER AND SHALL INCLUDE ALL OF THE FOLLOWING ELEMENTS (A-D)

(A) IDENTIFY THE CORNER BY REFERENCE TO THE U.S. PUBLIC LAND SURVEY SYSTEM IN DIAGRAM AT RIGHT

● = CORNER MONUMENT



(B) COORDINATES:

GEOGRAPHIC (Degrees Minutes Seconds)

LATITUDE: 43° 42' 40.41" N

LONGITUDE: 90° 34' 55.93" W

ELLIPSOID HT (m): _____

DATUM: NAD 1983

GEOID99 ADJ: -33.6375

ORTHOMETRIC HT: _____

VERNON COUNTY (U.S. FEET)

Coord Quality (+/-)

NORTHING (Y): 205655.403 _____

EASTING (X): 783184.363 _____

GPS METHOD USED TO COMPUTE COORDINATES (check as applicable)

- RTK Single Observation Average Observations
 Static Baseline Single Baseline Averaged Baselines OPUS Solution

BASE CONTROL USED FOR COORDINATE COMPUTATION

| | |
|------------------------------|--|
| Station Name | Station Coordinates (Lat/Long) |
| <u>NW Corner - Section 2</u> | <u>43° 43' 33.3" N 90° 35' 31.8" W</u> |

* Please List Additional Control Stations Used on Back of Form

Was a Least Squares Adjustment Used to Compute Coordinates? Yes / No

Date(s) of GPS Observations: 12 SEPTEMBER 2008

(C) REASON FOR COORDINATES SUBMITTAL (check one)

- Being Filed With a New U.S. PLS Monument Record
 To Correct the Coordinates Listed on a Previously Filed PLS Monument Record
 To Provide Coordinates for Previously Filed PLS Monument Record without Coordinates
 To Provide Supplemental Coordinates for a Previously Filed PLS Monument Record

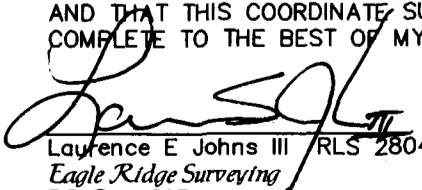
MOST RECENT PLS MONUMENT RECORD DATE:

R.L.S. WHO CREATED MOST RECENT PLS MONUMENT RECORD:

(D) AGENT(S) PERFORMING GPS OBSERVATIONS & COORDINATE COMPUTATION

- 1) LAURENCE E JOHNS III
 2) _____

I, LAURENCE E JOHNS III RLS 2804, REGISTERED LAND SURVEYOR, HEREBY CERTIFY THAT THE COORDINATES PROVIDED ON THIS RECORD WERE DETERMINED BY ME OR UNDER MY DIRECTION AND CONTROL AND THAT THIS COORDINATE SUBMISSION FORM IS CORRECT AND COMPLETE TO THE BEST OF MY KNOWLEDGE AND BELIEF.


 Laurence E Johns III RLS 2804
 Eagle Ridge Surveying
 PO Box 213
 Wilton, Wisconsin
 17 September 2008

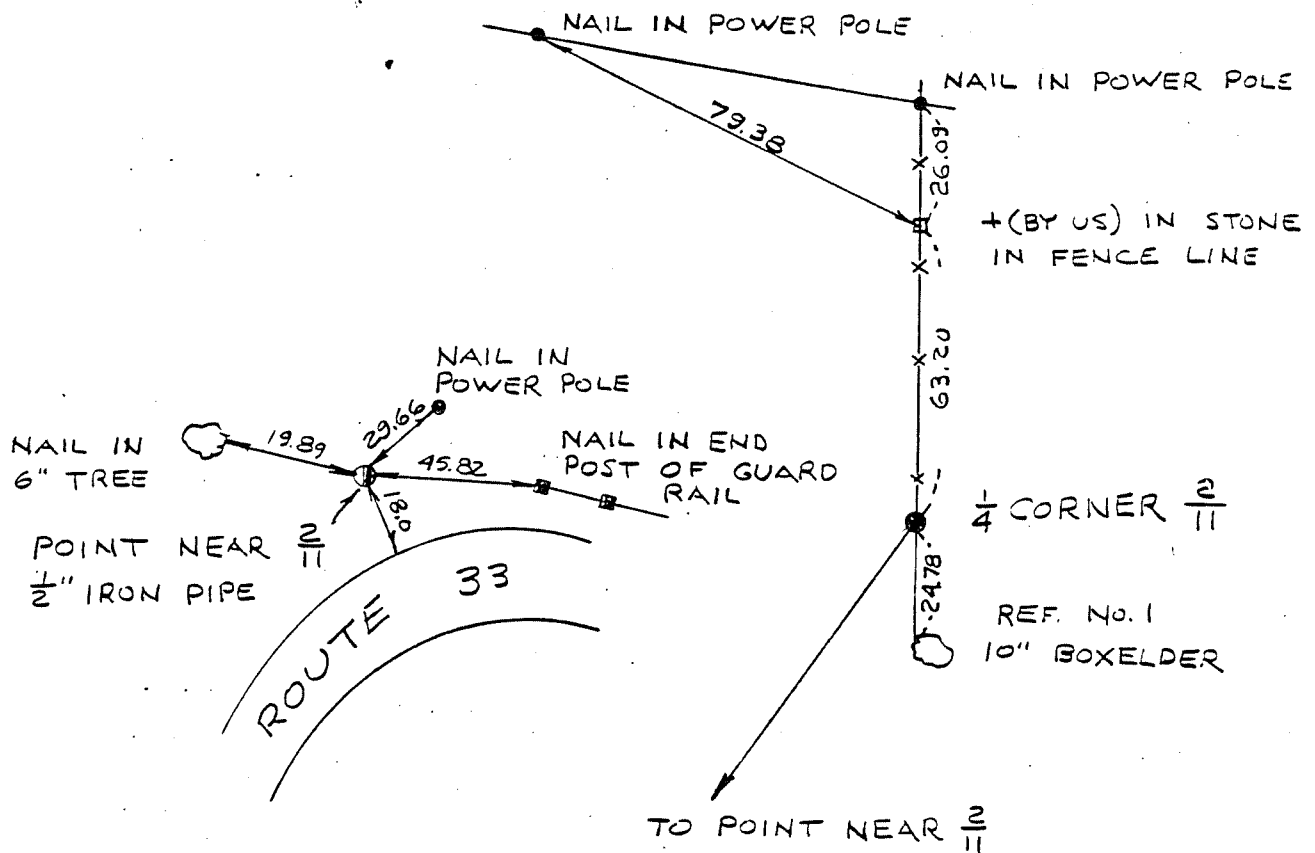


| | | | | | |
|-----------------------------------|------|---|------|--|-------|
| COUNTRY U. S. A. | | TYPE OF MARK 2" IRON PIPE WITH BRASS CAP | | STATION 1/4 CORNER 2/11 T. 14. N. R. 2 W. | |
| LOCALITY LA FARGE, WIS. | | STAMPING ON MARK 2/11 | | AGENCY (CAST IN MARKS) CORPS OF ENGRS. | |
| LATITUDE | | LONGITUDE | | DATUM | |
| (NORTHING)(EASTING) 624,233.23 | (FT) | (EASTING)(NORTHING) 1,846,092.63 | (FT) | GRID AND ZONE WIS. (SOUTH) | |
| (NORTHING)(EASTING) | (FT) | (EASTING)(NORTHING) | (FT) | ESTABLISHED BY (AGENCY) CHICAGO DISTRICT | |
| | (M) | | (M) | DATE 1966 | ORDER |

TO OBTAIN GRID AZIMUTH, ADD TO THE GEODETIC AZIMUTH
TO OBTAIN GRID AZ. (ADD)(SUB.) TO THE GEODETIC AZIMUTH

| OBJECT | AZIMUTH OR DIRECTION (GEODETIC)(GRID) (MAGNETIC) | BACK AZIMUTH | GEOD. DISTANCE (METERS) (FEET) | GRID DISTANCE (METERS) (FEET) |
|----------------------|--|--------------|-----------------------------------|----------------------------------|
| POINT IN N. E.S. FC. | N00° 08' 10" E. | | | 63.20 |
| POINT NEAR 2/11 | S. 35° 02' 25" W. | | | 383.25 |
| REF. No. 1 | S. 00° 01' 05" E. | | | 24.73 |

REFERENCE DISTANCES ARE HORIZONTAL. REFERENCE TREE IS BLAZED & SCRIBED TB. EITHER THE STONE IN THE FENCE LINE OR "POINT NEAR" CAN BE USED FOR A BACKSIGHT.



SKETCH