

RECEIVED
 MAR 15 2004
 BY: *G. Jacobson*

VERNON COUNTY CERTIFIED U.S. PUBLIC LAND SURVEY MONUMENT RECORD

INSTRUCTIONS: THIS RECORD SHALL SHOW THE LOCATION OF THE CORNER AND SHALL INCLUDE ALL OF THE FOLLOWING ELEMENTS (A-I)

(A) IDENTIFY THE CORNER BY REFERENCE TO THE U.S. PUBLIC LAND SURVEY SYSTEM

■ = CORNER MONUMENT RESTORED

WITNESSES TO CORNER LOCATION:

- 1) Robert M. Lampman
- 2) Jessica A. Zamor

VERNON COUNTY COORDINATES - NAD83(1991) - SURVEY FEET

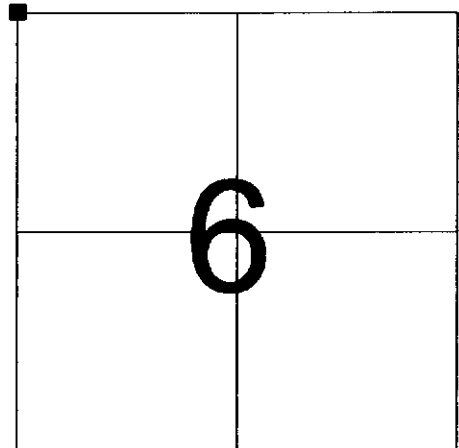
NORTHING: 210939.054

EASTING: 791018.107

MONROE COUNTY COORDINATES - NAD83(1991) - SURVEY FEET

NORTHING: 299988.566

EASTING: 694566.819



SECTION 6
 TOWN 14 NORTH, RANGE 1 WEST

(B) DESCRIBE ANY RECORD EVIDENCE, MONUMENT EVIDENCE, OCCUPATIONAL EVIDENCE, TESTIMONIAL EVIDENCE OR ANY OTHER MATERIAL EVIDENCE YOU CONSIDERED, AND WHETHER THE MONUMENT WAS FOUND OR PLACED.

Accepted existing True Cast Products Monument as best available evidence of original section corner location.

Existing monument was established by Gary L. Dechant in 1998. See corner history on reverse side of this sheet for additional information.

The accepted corner location fits extremely well with alignment of occupation along the north line of Section 6, T14N, R1W. The North one-quarter corner of Section 6 (established from occupational evidence near said corner area) is located only 0.56 feet north of a straight line between this corner and the Northeast corner of Section 6. As Dechant mentions on his tie sheet, this corner location also measures within approximately 2 feet of original record distance to the North one-quarter corner of Section 6.

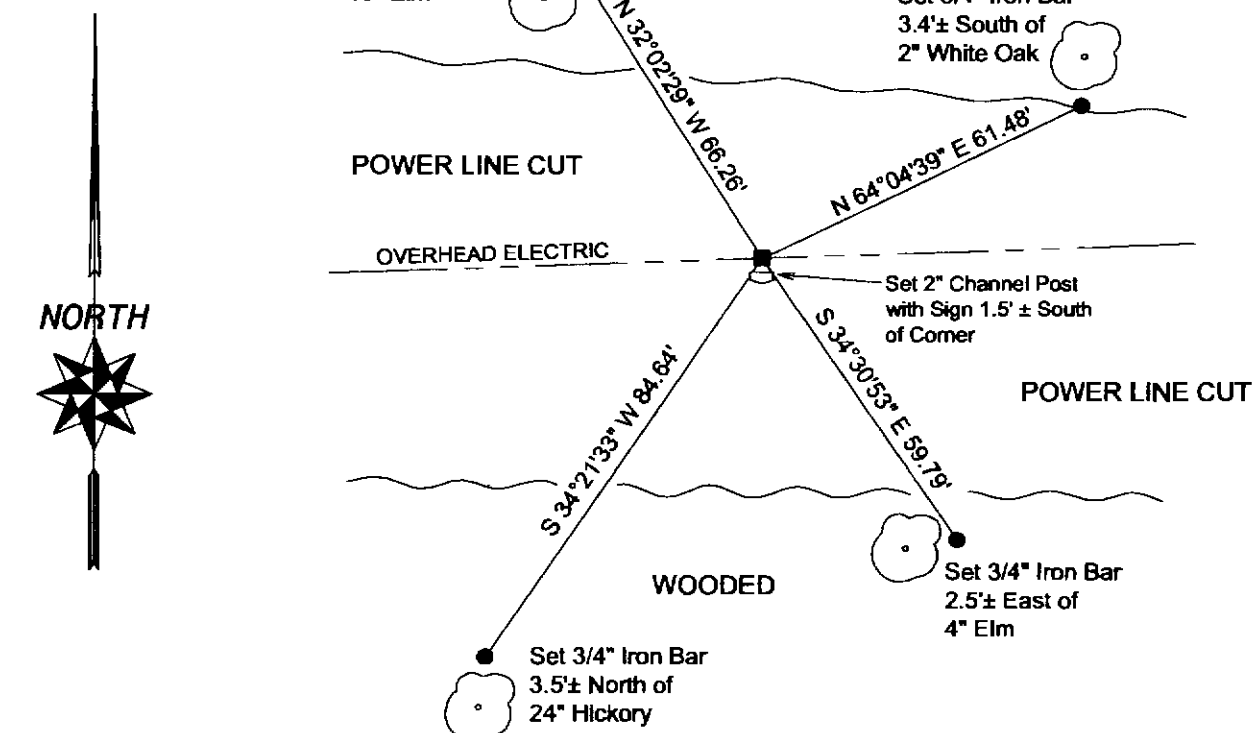
(C) IN THE PLAN VIEW DRAWING BELOW, PROVIDE REFERENCE TIES TO AT LEAST 4 WITNESS MONUMENTS OR, IF THE LOCATION IS WITHIN A MUNICIPALITY, TO AT LEAST 2 WITNESS MONUMENTS. (WITNESS MONUMENTS SHALL BE MADE OF CONCRETE, NATURAL STONE, IRON, OR OTHER EQUALLY DURABLE MATERIAL.) DESCRIBE WITNESS MONUMENTS.

(D) SHOW A PLAN VIEW DRAWING, DEPICTING THE RELEVANT MONUMENTS AND REFERENCE TIES, WHICH IS SUFFICIENTLY DETAILED TO ENABLE ACCURATE RELOCATION OF THE CORNER MONUMENT IF IT IS DISTURBED.

LEGEND

- FOUND EXISTING CAST IRON TRUE CAST PRODUCTS MONUMENT
- SET 3/4" X 24" ROUND IRON BAR FOR WITNESS MONUMENT

NOT TO SCALE



(E) DESCRIBE ANY MATERIAL DISCREPANCY BETWEEN THE LOCATION OF THE CORNER AS RESTORED OR REESTABLISHED AND THE LOCATION OF THAT CORNER AS PREVIOUSLY RESTORED OR REESTABLISHED BY DISTANCE AND DIRECTION. SHOW THE DISCREPANCY ON THE PLAN VIEW DRAWING UNDER (D), ABOVE. SHOW THE DISTANCES BETWEEN THE CORNER AS PREVIOUSLY RESTORED OR REESTABLISHED AND (1) THE CORNER AS RESTORED OR REESTABLISHED, AND (2) TO AT LEAST 2 OF THE WITNESS MONUMENTS AS SHOWN ON THE DRAWING IN (D), ABOVE.

N/A

(F) WAS THE CORNER RESTORED THROUGH ACCEPTANCE OF (1) AN OBLITERATED EVIDENCE LOCATION, OR (2) A FOUND PERPETUATED LOCATION?

(2) A FOUND PERPETUATED LOCATION

(G & H) WAS THE CORNER REESTABLISHED THROUGH LOST CORNER PROPORTIONATE METHODS? IF SO SHOW THE METHOD, INCLUDING THE DIRECTIONS AND DISTANCES TO OTHER PUBLIC LAND SURVEY CORNERS USED AS EVIDENCE OR USED FOR PROPORTIONING IN DETERMINING THE CORNER LOCATION.

N/A

(**) ANY ADDITIONAL INFORMATION RELATED TO CORNER LOCATION

CORNER HISTORY:

-Original government corner location established by Uriah Biggs in 1845.

-C.M. Sterling prepared of subdivision of Sections 5, 6, 7, 8 and 9 dated April of 1892. Sterling lists one new Butternut witness tree for the corner and also calls for an 18" long sandstone at the corner.

-Hamilton LaRue utilized the corner as part of a subdivision of Section 31, T15N, R1W dated June of 1897. LaRue does not mention the stone called for by Sterling. LaRue calls for the corner to have been marked and kept in remembrance by all the old settlers. LaRue lists two Butternut witness trees for the corner. One of said trees appears to be the same Butternut utilized as a witness by Sterling earlier.

-Gary L. Dechant reestablished the corner location, placed a True Cast Products Monument and prepared a tie sheet dated December 1, 1998. Gary Dechant was unable to find Sterling's stone. Dechant reestablished the corner location by accepting the remains of an occupied corner location. Dechant's tie sheet shows the corner being set at the intersection of remains of fence lines coming from the north and east.

AFFIX LAND SURVEYOR SEAL

(I) I, ROBERT M. LAMPMAN, CERTIFY THAT THE LOCATION SHOWN ON THIS RECORD WAS DETERMINED BY ME OR UNDER MY DIRECTION AND CONTROL AND THAT THIS U.S. PUBLIC LAND SURVEY MONUMENT RECORD IS CORRECT AND COMPLETE TO THE BEST OF MY KNOWLEDGE AND BELIEF.


SIGNATURE

3-10-04
DATE

