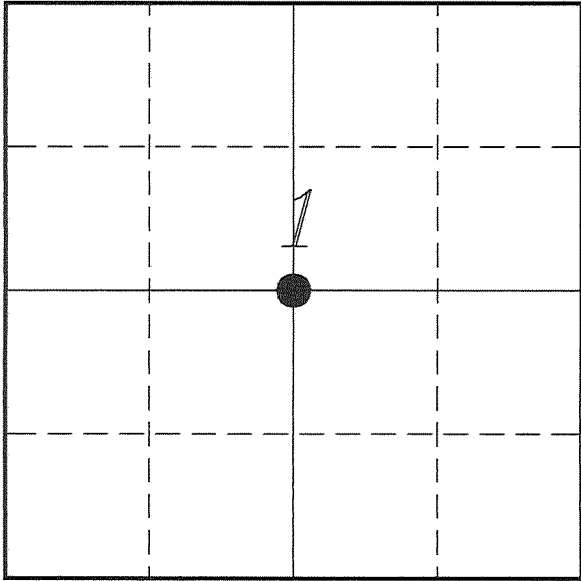


**U. S. PUBLIC LAND SURVEY MONUMENT RECORD**

**SECTION 1, T14N, R2W, TOWN OF WHITESTOWN  
VERNON COUNTY, WISCONSIN**



**LOCATION OF LANDMARK**

<i>VERNON COUNTY COORDINATE SYSTEM</i>	
<i>Northing</i>	<i>208277.508</i>
<i>Easting</i>	<i>788431.021</i>
<i>Datum</i>	<i>NAD 1983 (2011)</i>
<i>Elevation</i>	
<i>Datum</i>	
<i>TYPE OF LANDMARK:</i>	
<i>Set Lunde Monument</i>	
<i>BEARINGS ARE REFERENCED TO:</i>	
<i>Vernon County Coordinates</i>	

*Witnesses:* Laurence E Johns III  
Doug Avoles

*Eagle Ridge Surveying*  
PO Box 213  
Wilton, Wisconsin

*Date:* 15 September 2015

*Describe any record evidence, monument evidence, testimonial evidence or any other material evidence you considered and whether the monument was found or restored through acceptance of an obliterated evidence location.*

I did not find the 1" pipe set by Carroll.

I found a 4 foot tall stump of what appears to be Ristow's bearing tree. The stump has old fence wire on the South side and is hollow, probably burnt out. The stump is 36" in diameter and was cut quite a number of years ago, it is very rotten. The stump is an old maple tree and is located in the approximate correct location in regards to the fence corner.

It is of my opinion that this old tree stump is the remains of Ristow's bearing tree.

I set this corner at the bearing of S 55° E and a distance of 6 links (3.96') as called for by Ristow.

The corner is 3.6' feet to the Southwest of the current fence corner. This location does match the fence locations to the West and North.

This location is 7.0' West and 6.3' North of the true center of section.

It is also 3.4' West and 6.3' North of the computed location of Carroll's center.

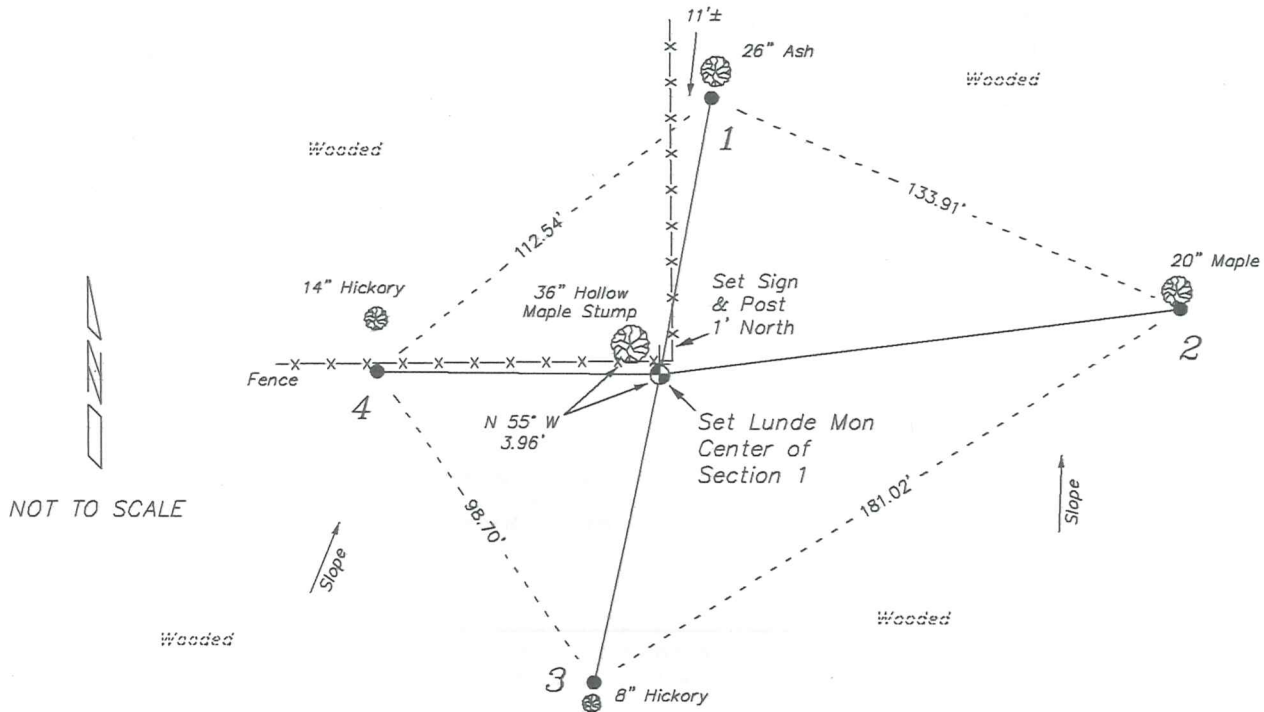
*Describe or show any material discrepancy between the location of the restored corner and that of the corner previously restored or re-established.*

Alex Ristow was at this corner, in January 1906, during a survey in Section 1. He shows a 15" Maple Tree for a bearing tree on his survey. No distances to other corners are shown.

Patrick Carroll was at this corner, in October 2002, during a survey in Section 1. He shows that he set a 1" iron pipe.

## RECORD OF DURABLE WITNESS MONUMENTS

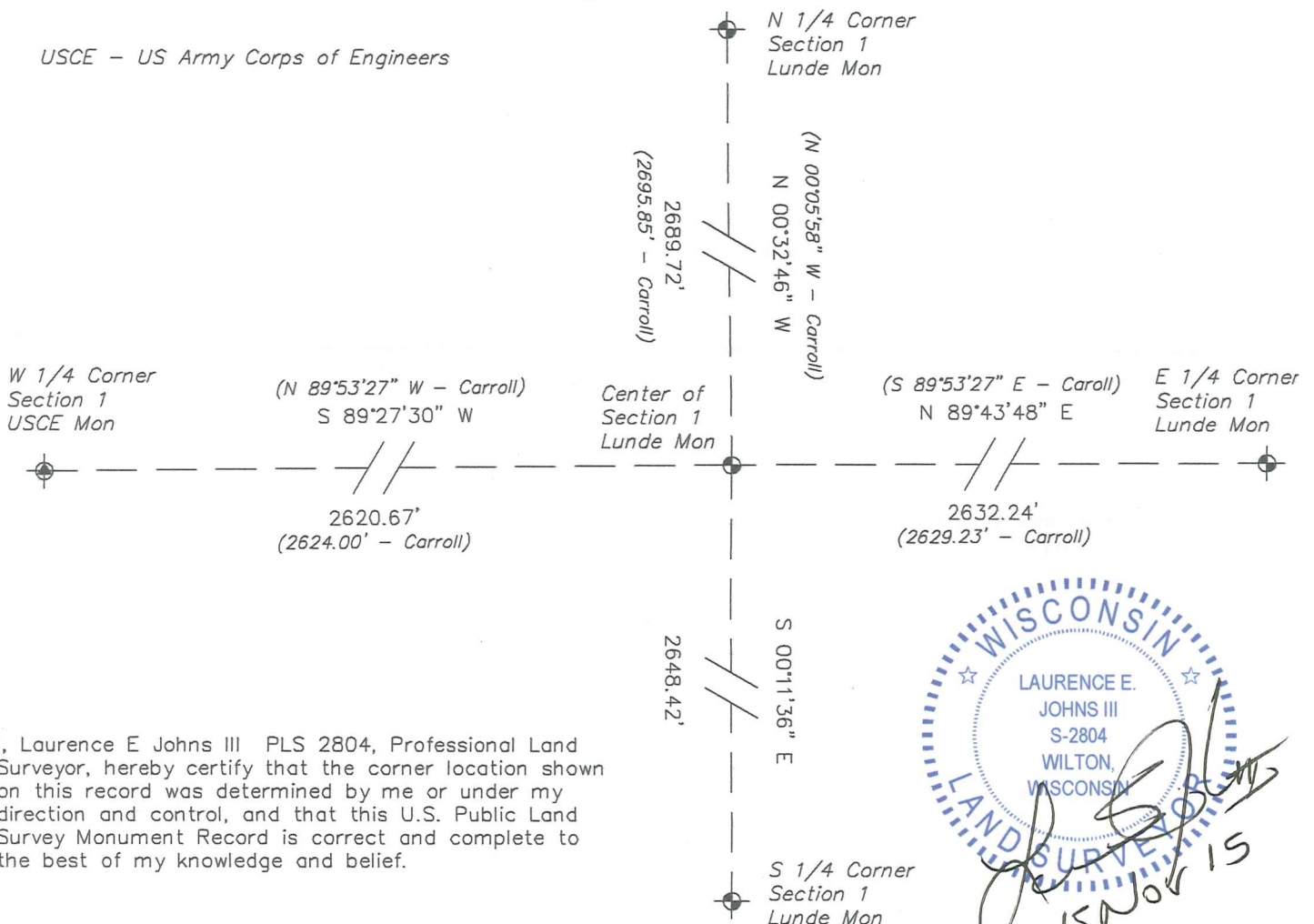
NO	DESCRIPTION	BEARING	DISTANCE
1	Set 3/4" x 18" Iron Rod 1' South of a 26" Ash	N 10°31'24" E	73.47'
2	Set 3/4" x 18" Iron Rod 1' South of a 20" Maple	N 82°43'54" E	136.63'
3	Set 3/4" x 18" Iron Rod 1' North of a 8" Hickory	S 11°59'57" W	81.92'
4	Set 3/4" x 18" Iron Rod In Fence - 5' South of a 14" Hickory	N 89°22'54" W	73.54'



## PLAN VIEW DRAWING OF REFERENCE TIES

Map Showing Distance And Direction To Other Public Land Survey Corners Used For Re-Establishing The Corner

USCE - US Army Corps of Engineers



I, Laurence E Johns III PLS 2804, Professional Land Surveyor, hereby certify that the corner location shown on this record was determined by me or under my direction and control, and that this U.S. Public Land Survey Monument Record is correct and complete to the best of my knowledge and belief.

