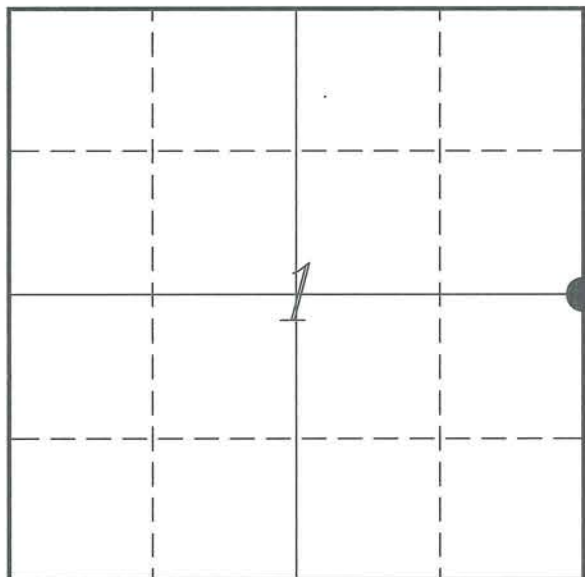


U. S. PUBLIC LAND SURVEY MONUMENT RECORD

SECTION 1, T14N, R2W, TOWN OF WHITESTOWN
VERNON COUNTY, WISCONSIN



LOCATION OF LANDMARK

VERNON COUNTY COORDINATE SYSTEM	
Northing	208289.907
Easting	791063.232
Datum	NAD 1983 (2011)
Elevation	
Datum	
TYPE OF LANDMARK:	
Set Lunde Monument	
BEARINGS ARE REFERENCED TO:	
Vernon County Coordinates	

Witnesses: Laurence E Johns III

Date: 25 August 2013

Describe any record evidence, monument evidence, testimonial evidence or any other material evidence you considered and whether the monument was found or restored through acceptance of an obliterated evidence location.

No bearing trees of record were located.

The 1 1/4" iron rod was found about 6" above ground with some North/South fence wire on the ground next to it. It is located on the West edge of an old road bed.

Malliet states in his survey that he re-established this corner based on an old bearing tree (Sugar Maple), which would have been one of Sterling's trees.

I accepted the 1 1/4" iron rod as the best available evidence of the original government corner and replaced it with a Lunde Monument.

Describe or show any material discrepancy between the location of the restored corner and that of the corner previously restored or re-established.

Uriah Biggs established this corner in October 1845.

C M Sterling was at this corner in April 1892, during a survey in Sections 5, 6, 7, 8 & 9 of Town of Forest. He shows that he set a Flint Stone and marked two bearing trees.

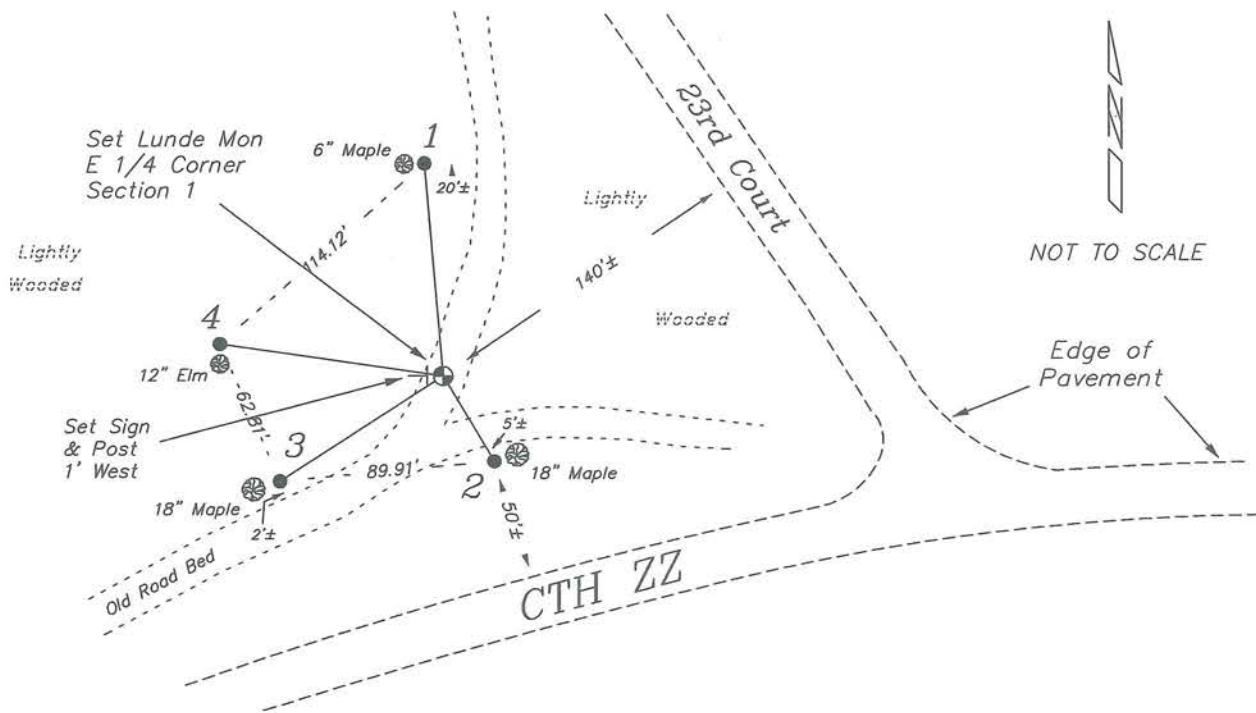
Alex Ristow was at this corner in January 1906, during a survey in Section 1. He shows that he found Sterling's corner and rewitnessed the corner.

Douglas Malliet was at this corner in February 1978, during a survey in Section 6, Town of Forest. He shows that he re-established this corner based on a East/West fence and a bearing tree and placed a 1 1/4" iron rod.

Patrick Carroll was at this corner in October 2002, during a survey in Section 1. He shows that he found a 1 1/4" iron rod.

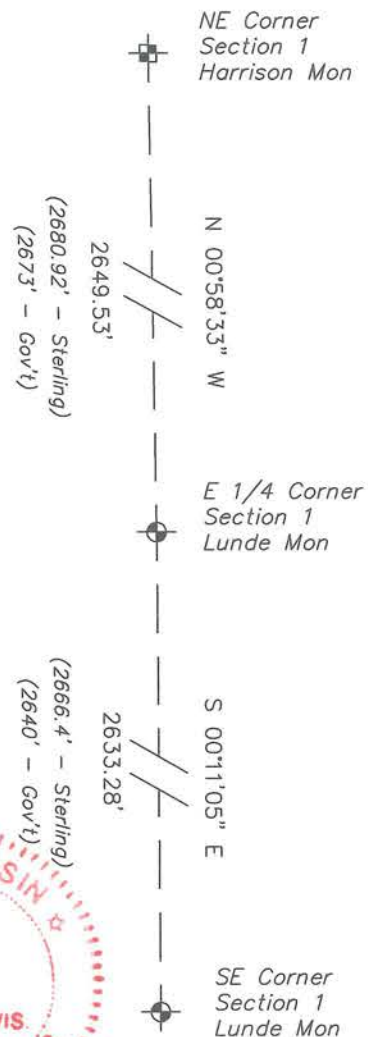
RECORD OF DURABLE WITNESS MONUMENTS

NO	DESCRIPTION	BEARING	DISTANCE
1	Set 3/4" x 18" Iron Rod 2' East of a 6" Maple	N 05°01'38" W	89.68'
2	Set 3/4" x 18" Iron Rod 1' West of a 18" Maple	S 30°54'53" E	41.59'
3	Set 3/4" x 18" Iron Rod 1' East of a 18" Maple	S 57°13'44" W	81.06'
4	Set 3/4" x 18" Iron Rod 2' North of a 12" Elm	N 81°39'23" W	94.29'



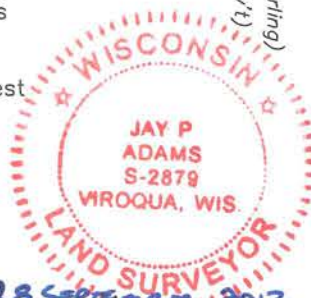
PLAN VIEW DRAWING OF REFERENCE TIES

Map Showing Distance And Direction To Other Public Land Survey Corners Used For Re-Establishing The Corner



I, Jay P Adams, RLS 2879, Registered Land Surveyor, hereby certify that the corner location shown on this record was determined by me or under my direction and control, and that this U.S. Public Land Survey Monument Record is correct and complete to the best of my knowledge and belief.


 Jay P Adams RLS 2879

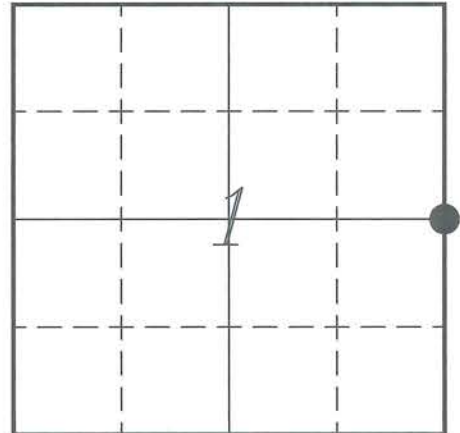


VERNON COUNTY COORDINATE SUBMISSION FORM
 "As An Addendum To"
VERNON COUNTY
CERTIFIED U.S. PUBLIC LAND SURVEY MONUMENT RECORD

INSTRUCTIONS: THIS RECORD FORM SHOULD BE USED WHEN COORDINATES ARE PROVIDED FOR A PUBLIC LAND SURVEY CORNER AND SHALL INCLUDE ALL OF THE FOLLOWING ELEMENTS (A-D)

(A) IDENTIFY THE CORNER BY REFERENCE TO THE U.S. PUBLIC LAND SURVEY SYSTEM IN DIAGRAM AT RIGHT

● = CORNER MONUMENT



T 14 N, R 2 W

(B) COORDINATES:

GEOGRAPHIC (Degrees Minutes Seconds)

LATITUDE: 43° 43' 06.2224" N

LONGITUDE: 90° 33' 08.5662" W

ELLIPSOID HT (m): _____

DATUM: NAD 1983 (2011)

GEOID12A ADJ: -33.701

ORTHOMETRIC HT: _____

VERNON COUNTY (U.S. FEET)

Coord Quality (+/-)

NORTHING (Y): 208289.907 _____

EASTING (X): 791063.232 _____

GPS METHOD USED TO COMPUTE COORDINATES (check as applicable)

- RTK Observations Static Baselines OPUS-RS Solution OPUS-S Solution
 Combination of GPS Observations & Conventional Procedures
 Single Angle Measurement Closed Traverse Loop

Was a Least Squares Adjustment Used to Compute Coordinates? Yes / No

BASE CONTROL USED FOR COORDINATE COMPUTATION

Station Name	Station Coordinates	Date/Time
<u>OPUS Sta - TS 2056</u>	<u>43° 43' 06.1416" N 90° 33' 05.3292" W</u>	<u>08/25/2013 - 15:13</u>
	<u>N - 208282.384 E - 791300.994</u>	
<u>Same</u>		<u>09/02/2013 - 16:12</u>

(C) REASON FOR COORDINATES SUBMITTAL (check one)

- Being Filed With a New U.S. PLS Monument Record
 To Correct the Coordinates Listed on a Previously Filed PLS Monument Record
 To Provide Coordinates for Previously Filed PLS Monument Record without Coordinates
 To Provide Supplemental Coordinates for a Previously Filed PLS Monument Record

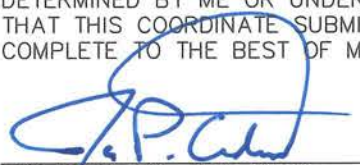
MOST RECENT PLS MONUMENT RECORD DATE:

R.L.S. WHO CREATED MOST RECENT PLS MONUMENT RECORD:

(D) AGENT(S) PERFORMING GPS OBSERVATIONS & COORDINATE COMPUTATION

- 1) LAURENCE E JOHNS III
 2) _____

I, JAY P ADAMS RLS 2879, REGISTERED LAND SURVEYOR, HEREBY CERTIFY THAT THE COORDINATES PROVIDED ON THIS RECORD WERE DETERMINED BY ME OR UNDER MY DIRECTION AND CONTROL AND THAT THIS COORDINATE SUBMISSION FORM IS CORRECT AND COMPLETE TO THE BEST OF MY KNOWLEDGE AND BELIEF.


 JAY P ADAMS RLS 2879

