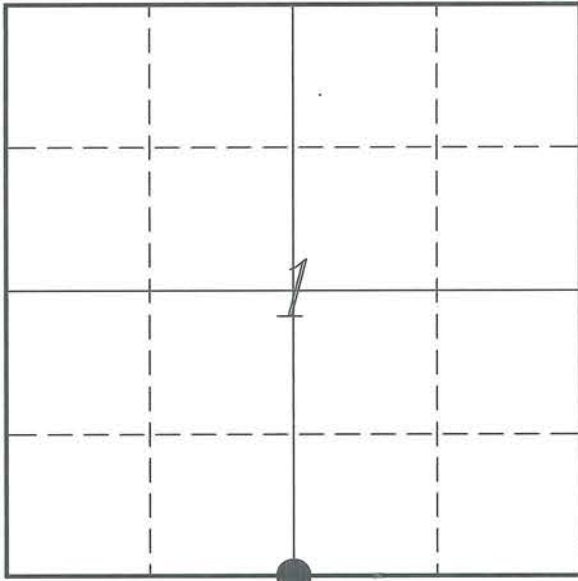


U. S. PUBLIC LAND SURVEY MONUMENT RECORD

SECTION 1, T14N, R2W, TOWN OF WHITESTOWN  
VERNON COUNTY, WISCONSIN



LOCATION OF LANDMARK

Witnesses: Laurence E Johns III

Date: 27 August 2013

VERNON COUNTY COORDINATE SYSTEM	
Northing	205629.107
Easting	788439.956
Datum	NAD 1983 (2011)
Elevation	
Datum	
TYPE OF LANDMARK:	
Set Lunde Monument	
BEARINGS ARE REFERENCED TO:	
Vernon County Coordinates	

Describe any record evidence, monument evidence, testimonial evidence or any other material evidence you considered and whether the monument was found or restored through acceptance of an obliterated evidence location.

No bearing trees of record were located.

This corner is on the Southern edge of the Horse Trail Campground located in Wildcat State Park.

There is no evidence of occupation anywhere near this area.

I determined the corner to be lost and re-established this corner at the mid-point between the SW & SE Corners.

This location is approximately 9 feet North of an unnamed creek.

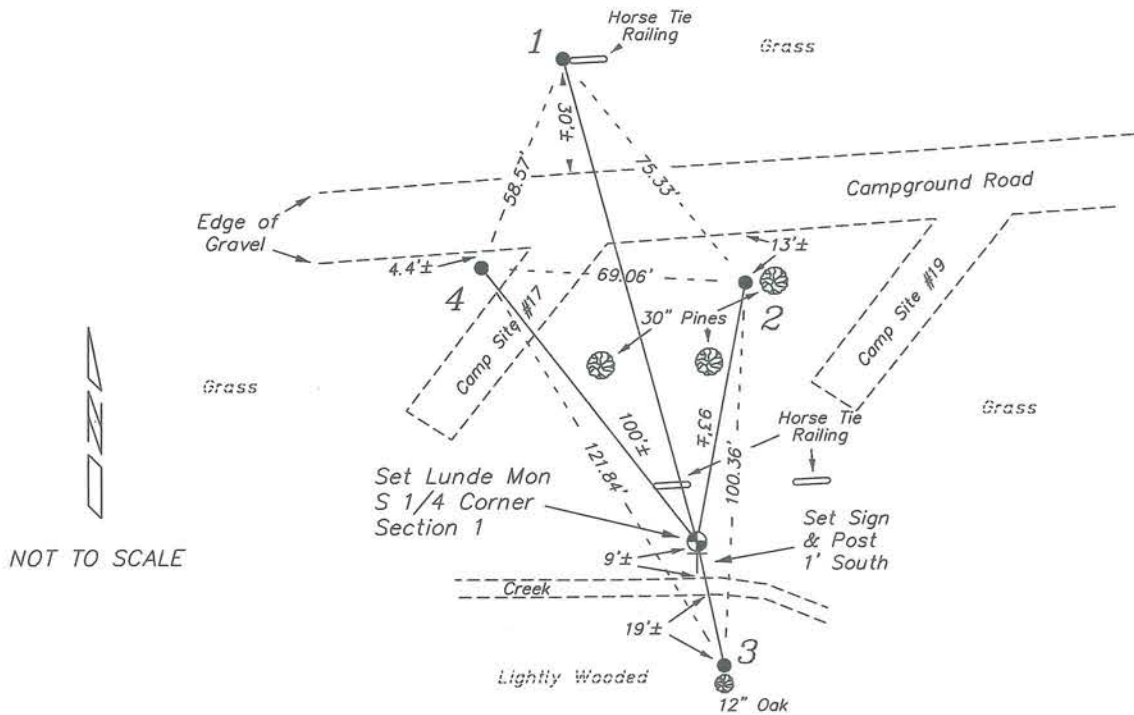
Describe or show any material discrepancy between the location of the restored corner and that of the corner previously restored or re-established.

Noah Phelps established this corner in October 1847.

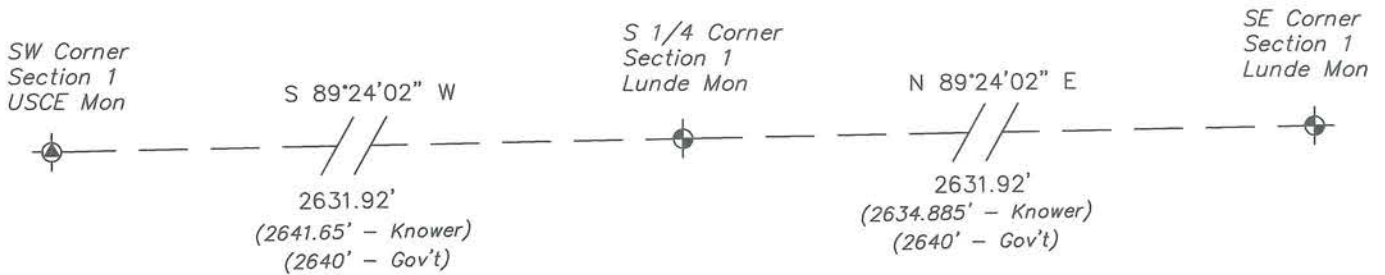
Wm Knower was at this corner in July 1885, during a survey in Section 12. He shows that he found the government corner and renewed the tie.

## RECORD OF DURABLE WITNESS MONUMENTS

NO	DESCRIPTION	BEARING	DISTANCE
1	Set 3/4" x 18" Iron Rod West End of a Horse Tie Railing	N 11°27'10" W	110.72'
2	Set 3/4" x 18" Iron Rod 4' West of a 30" Pine	N 10°37'52" E	69.02'
3	Set 3/4" x 18" Iron Rod 1' North of a 12" Oak	N 38°04'23" W	91.16'
4	Set 3/4" x 18" Iron Rod East Side of Campsite 17 Marker	S 12°17'22" E	33.13'



*Map Showing Distance And Direction To Other Public Land Survey Corners Used For Re-Establishing The Corner*



I, Jay P Adams, RLS 2879, Registered Land Surveyor, hereby certify that the corner location shown on this record was determined by me or under my direction and control, and that this U.S. Public Land Survey Monument Record is correct and complete to the best of my knowledge and belief.

Jay P Adams RLS 2879



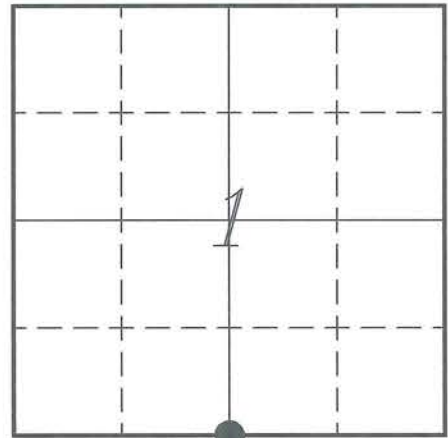
28 SEPTEMBER 2013

**VERNON COUNTY COORDINATE SUBMISSION FORM**  
 "As An Addendum To"  
**VERNON COUNTY**  
**CERTIFIED U.S. PUBLIC LAND SURVEY MONUMENT RECORD**

INSTRUCTIONS: THIS RECORD FORM SHOULD BE USED WHEN COORDINATES ARE PROVIDED FOR A PUBLIC LAND SURVEY CORNER AND SHALL INCLUDE ALL OF THE FOLLOWING ELEMENTS (A-D)

(A) IDENTIFY THE CORNER BY REFERENCE TO THE U.S. PUBLIC LAND SURVEY SYSTEM IN DIAGRAM AT RIGHT

● = CORNER MONUMENT



T 14 N, R 2 W

(B) COORDINATES:

GEOGRAPHIC (Degrees Minutes Seconds)

LATITUDE: 43° 42' 40.0163" N

LONGITUDE: 90° 33' 44.3808" W

ELLIPSOID HT (m): \_\_\_\_\_

DATUM: NAD 1983 (2011)

GEOID12A ADJ: -33.680

ORTHOMETRIC HT: \_\_\_\_\_

VERNON COUNTY (U.S. FEET)

Coord Quality (+/-)

NORTHING (Y): 205629.107 \_\_\_\_\_

EASTING (X): 788439.956 \_\_\_\_\_

GPS METHOD USED TO COMPUTE COORDINATES (check as applicable)

RTK Observations     Static Baselines     OPUS-RS Solution     OPUS-S Solution

Combination of GPS Observations & Conventional Procedures

Single Angle Measurement     Closed Traverse Loop

Was a Least Squares Adjustment Used to Compute Coordinates? Yes /  No

BASE CONTROL USED FOR COORDINATE COMPUTATION

Station Name	Station Coordinates	Date/Time
<u>OPUS Sta - TS 1943</u>	<u>43° 42' 38.8634" N 90° 34' 06.8349" W</u>	<u>08/27/2013 - 11:35</u>
	<u>N - 205508.050 E - 786790.952</u>	
<u>Same</u>		<u>08/27/2013 - 13:55</u>

(C) REASON FOR COORDINATES SUBMITTAL (check one)

Being Filed With a New U.S. PLS Monument Record

To Correct the Coordinates Listed on a Previously Filed PLS Monument Record

To Provide Coordinates for Previously Filed PLS Monument Record without Coordinates

To Provide Supplemental Coordinates for a Previously Filed PLS Monument Record

MOST RECENT PLS MONUMENT RECORD DATE:

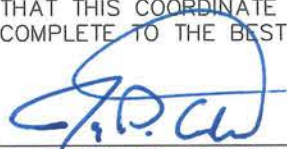
R.L.S. WHO CREATED MOST RECENT PLS MONUMENT RECORD:

(D) AGENT(S) PERFORMING GPS OBSERVATIONS & COORDINATE COMPUTATION

1) LAURENCE E JOHNS III

2) \_\_\_\_\_

I, JAY P ADAMS RLS 2879, REGISTERED LAND SURVEYOR, HEREBY CERTIFY THAT THE COORDINATES PROVIDED ON THIS RECORD WERE DETERMINED BY ME OR UNDER MY DIRECTION AND CONTROL AND THAT THIS COORDINATE SUBMISSION FORM IS CORRECT AND COMPLETE TO THE BEST OF MY KNOWLEDGE AND BELIEF.

  
 JAY P ADAMS RLS 2879

