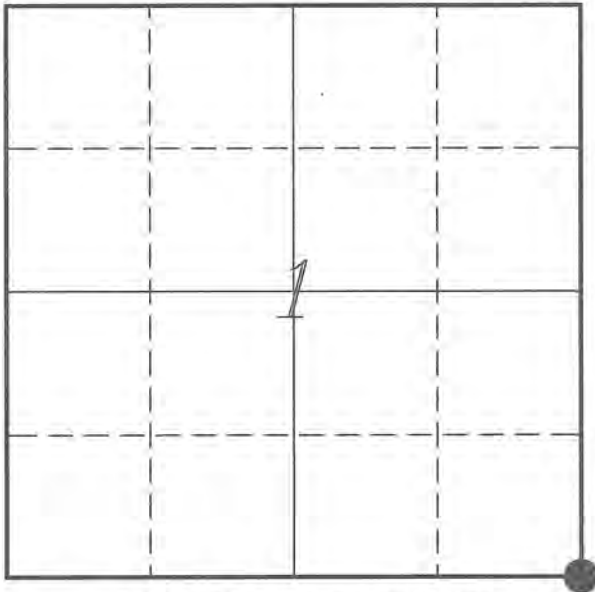


U. S. PUBLIC LAND SURVEY MONUMENT RECORD

**SECTION 1, T14N, R2W, TOWN OF WHITESTOWN
VERNON COUNTY, WISCONSIN**



LOCATION OF LANDMARK

| | |
|--|------------------------|
| <i>VERNON COUNTY COORDINATE SYSTEM</i> | |
| <i>Northing</i> | <i>205656.645</i> |
| <i>Easting</i> | <i>791071.728</i> |
| <i>Datum</i> | <i>NAD 1983 (2011)</i> |
| <i>Elevation</i> | |
| <i>Datum</i> | |
| <i>TYPE OF LANDMARK:</i> | |
| <i>Set Lunde Monument</i> | |
| <i>BEARINGS ARE REFERENCED TO:</i> | |
| <i>Vernon County Coordinates</i> | |

Witnesses: Laurence E Johns III
Larry Handschy

Date: 26 August 2013

Describe any record evidence, monument evidence, testimonial evidence or any other material evidence you considered and whether the monument was found or restored through acceptance of an obliterated evidence location.

No bearing trees of record were located.

The 2" iron pipe shown on Lampman's tie sheet was found. There is old fence lying on the ground in all 4 directions, there are some fence posts to the East.

I could not find any record of the origin of the 2" iron pipe, but it appears to have been placed based on occupation.

Lampman mentions in his tie sheet that the location was verified when the 1/4 corners to the East and South were re-established.

I accepted the 2" iron pipe as the best available evidence of the original government corner and replaced it with a Lunde Monument.

Describe or show any material discrepancy between the location of the restored corner and that of the corner previously restored or re-established.

Uriah Biggs established this corner in October 1845.

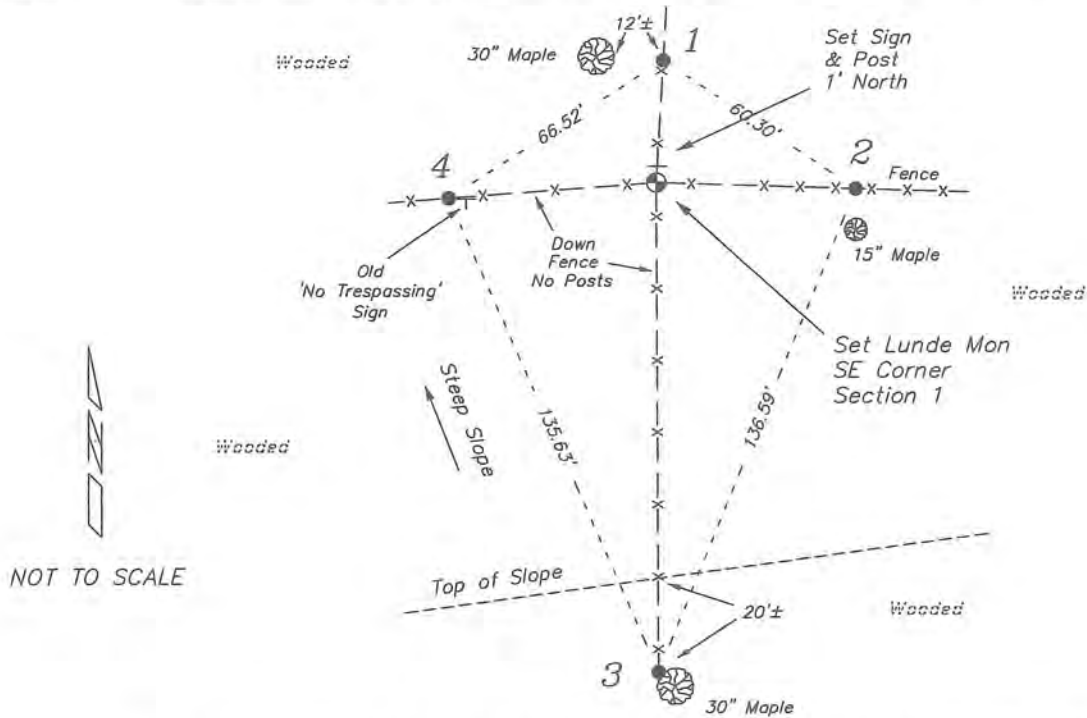
Wm Knower was at this corner in June 1885, during a survey in Section 12. He shows that he found the government corner and renewed the tie.

C M Sterling was at this corner in April 1892, during a survey in Section 6 & 7, Town of Forest. It is unclear if he re-established this corner or found an existing one.

Robert Lampman was at this corner in August 1998, during a survey in Section 7, Town of Forest. He shows that he found a 2" iron pipe at an occupied corner and prepared a tie sheet.

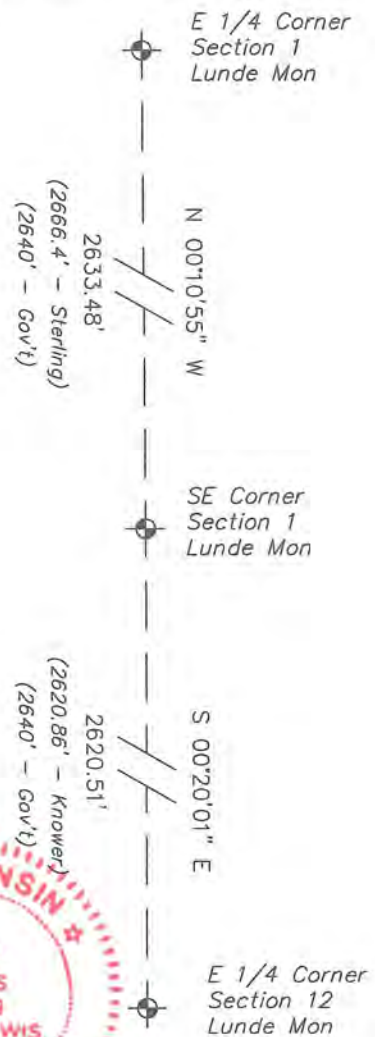
RECORD OF DURABLE WITNESS MONUMENTS

| NO | DESCRIPTION | BEARING | DISTANCE |
|----|---|---------------|----------|
| 1 | Set 3/4" x 18" Iron Rod In Down Fence - East of 30" Maple | N 03°22'12" E | 31.83' |
| 2 | Set 3/4" x 18" Iron Rod In Fence - 4' North of a 15" Maple | S 88°10'24" E | 52.08' |
| 3 | Set 3/4" x 18" Iron Rod In Down Fence - NW Side of 30" Maple | S 00°11'10" E | 128.12' |
| 4 | Set 3/4" x 18" Iron Rod 1' West of Old 'No Trespassing' Sign | S 85°48'22" W | 54.37' |



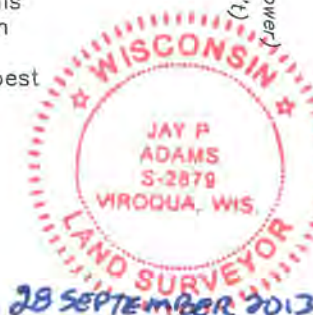
PLAN VIEW DRAWING OF REFERENCE TIES

Map Showing Distance And Direction To Other Public Land Survey Corners Used For Re-Establishing The Corner



I, Jay P Adams, RLS 2879, Registered Land Surveyor, hereby certify that the corner location shown on this record was determined by me or under my direction and control, and that this U.S. Public Land Survey Monument Record is correct and complete to the best of my knowledge and belief.


Jay P Adams RLS 2879

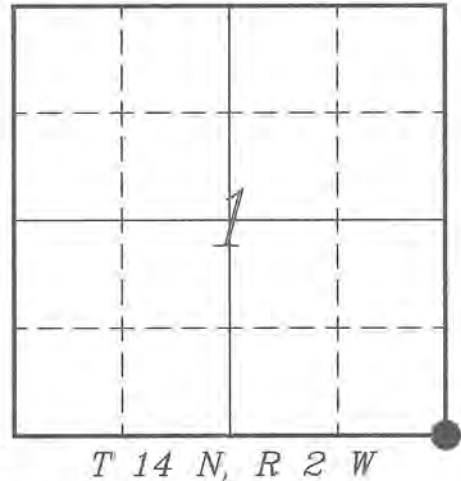


VERNON COUNTY COORDINATE SUBMISSION FORM
 "As An Addendum To"
VERNON COUNTY
CERTIFIED U.S. PUBLIC LAND SURVEY MONUMENT RECORD

INSTRUCTIONS: THIS RECORD FORM SHOULD BE USED WHEN COORDINATES ARE PROVIDED FOR A PUBLIC LAND SURVEY CORNER AND SHALL INCLUDE ALL OF THE FOLLOWING ELEMENTS (A-D)

(A) IDENTIFY THE CORNER BY REFERENCE TO THE U.S. PUBLIC LAND SURVEY SYSTEM IN DIAGRAM AT RIGHT

● = CORNER MONUMENT



(B) COORDINATES:

GEOGRAPHIC (Degrees Minutes Seconds)

LATITUDE: 43° 42' 40.2176" N

LONGITUDE: 90° 33' 08.5502" W

ELLIPSOID HT (m): _____

DATUM: NAD 1983 (2011)

GEOID12A ADJ: _____

ORTHOMETRIC HT: _____

VERNON COUNTY (U.S. FEET)

Coord Quality (+/-)

NORTHING (Y): 205656.645

EASTING (X): 791071.728

GPS METHOD USED TO COMPUTE COORDINATES (check as applicable)

RTK Observations Static Baselines OPUS-RS Solution OPUS-S Solution

Combination of GPS Observations & Conventional Procedures

Single Angle Measurement Closed Traverse Loop

Was a Least Squares Adjustment Used to Compute Coordinates? Yes / No

BASE CONTROL USED FOR COORDINATE COMPUTATION

| Station Name | Station Coordinates | Date/Time |
|---------------------|--|---------------------------|
| <u>Forest W GPS</u> | <u>43° 42' 24.6008" N 90° 32' 42.4606" W</u> | <u>08/22/2013 - 14:19</u> |
| | <u>N - 204080.696 E - 792992.589</u> | |
| <u>Same</u> | | <u>08/26/2013 - 08:41</u> |

(C) REASON FOR COORDINATES SUBMITTAL (check one)

Being Filed With a New U.S. PLS Monument Record

To Correct the Coordinates Listed on a Previously Filed PLS Monument Record

To Provide Coordinates for Previously Filed PLS Monument Record without Coordinates

To Provide Supplemental Coordinates for a Previously Filed PLS Monument Record

MOST RECENT PLS MONUMENT RECORD DATE: August 31, 1998

R.L.S. WHO CREATED MOST RECENT PLS MONUMENT RECORD: Robert Lampman, S1296

(D) AGENT(S) PERFORMING GPS OBSERVATIONS & COORDINATE COMPUTATION

1) LAURENCE E JOHNS III

2) _____

I, JAY P ADAMS RLS 2879, REGISTERED LAND SURVEYOR, HEREBY CERTIFY THAT THE COORDINATES PROVIDED ON THIS RECORD WERE DETERMINED BY ME OR UNDER MY DIRECTION AND CONTROL AND THAT THIS COORDINATE SUBMISSION FORM IS CORRECT AND COMPLETE TO THE BEST OF MY KNOWLEDGE AND BELIEF.

JAY P ADAMS RLS 2879



SEP 11 1998

CERTIFIED LAND CORNER

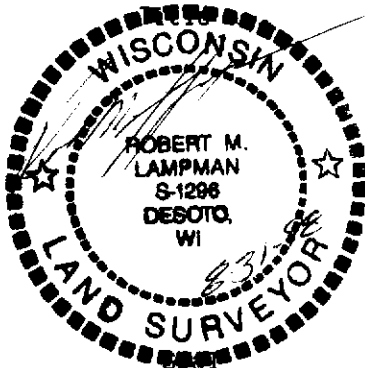
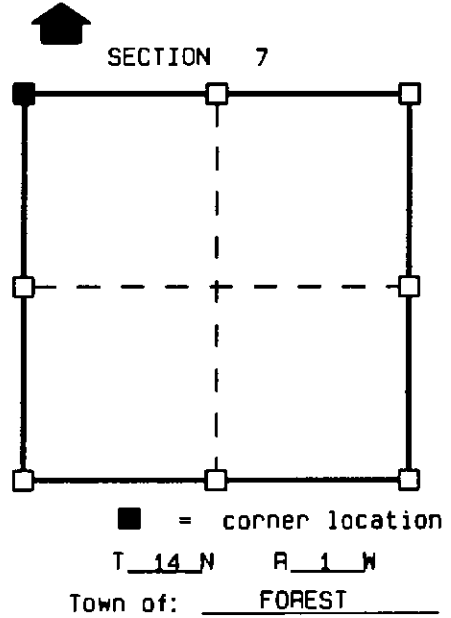
STATE OF WISCONSIN)
COUNTY OF VERNON) S.S.

CERTIFICATE

I, ROBERT M. LAMPMAN, do hereby certify
that on the 25th day of AUGUST 1998,
I found (evidence) ~~(no evidence)~~ of the NW
corner of SECTION 7, T14 N. R1 W.
Fourth Principal Meridian, and I re-established
said corner according to the Wisconsin Statutes
as shown and described hereon.

Dated this 31st day of AUGUST 1998

ROBERT M. LAMPMAN R.L.S. S-1296



History of original corner establishment:

ORIGINAL CORNER ESTABLISHED BY URIAH BIGGS IN OCTOBER OF 1845.
W.H.KNOWER RENEWED AND MADE TWO NEW TIES FOR THE CORNER IN 1885 AS PART OF A
SURVEY IN SECTION 12, T14N, R2W.

Description of corner evidence found:

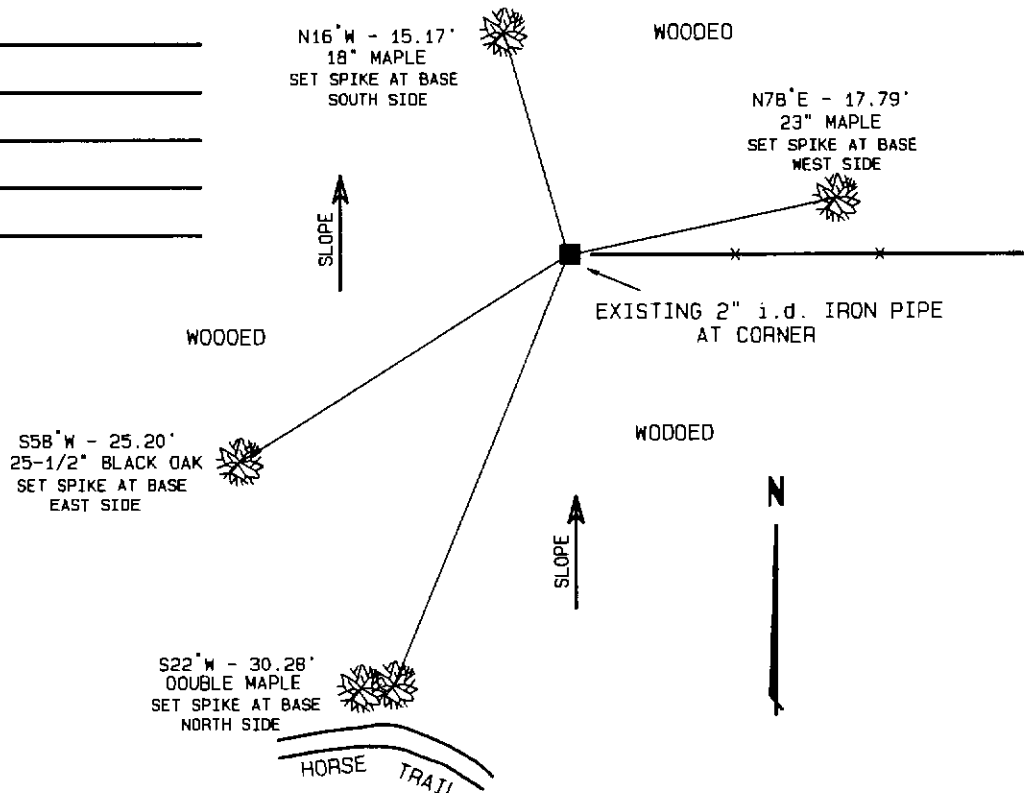
FOUND AND ACCEPTED AN EXISTING 2" i.d. IRON PIPE.
THE LOCATION OF THIS PIPE WAS VERIFIED BY THE FACT THAT RECORDED DISTANCES FROM
THIS PIPE WERE UTILIZED IN SUCCESSFULLY RE-ESTABLISHING THE NORTH & WEST 1/4
CORNERS OF SECTION 7. (SEE TIE SHEETS FOR SAID CORNERS FOR FURTHER INFORMATION.)

Description of corner and witness monuments, references and accessories used to
perpetuate the original or re-established location of this corner:

Witnesses to corner location:

ROBERT M. LAMPMAN
JASON W. DOESECKLE
JESSICA A. ZAMOR

Sketch:



NOTES:
DRAWING IS NOT TO SCALE.
BEARINGS ARE MAGNETIC.
NO BLAZES MADE ON BEARING TREES.

VERNON COUNTY COORDINATES

| North (Y) | East (X) |
|-----------|----------|
| | |