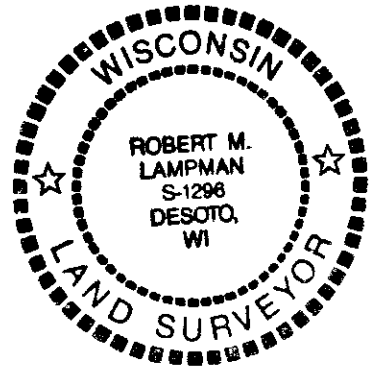


Surveyor's Certificate:
 I, Robert M. Lampman, Registered Land Surveyor, do hereby certify that to the best of my knowledge and belief, the within drawing is a true and correct representation of the location of section corner monuments found and/or placed during this section corner remonumentation project as well as the grid coordinate inverses between the same.

Section Corner Remonumentation Data Sheet



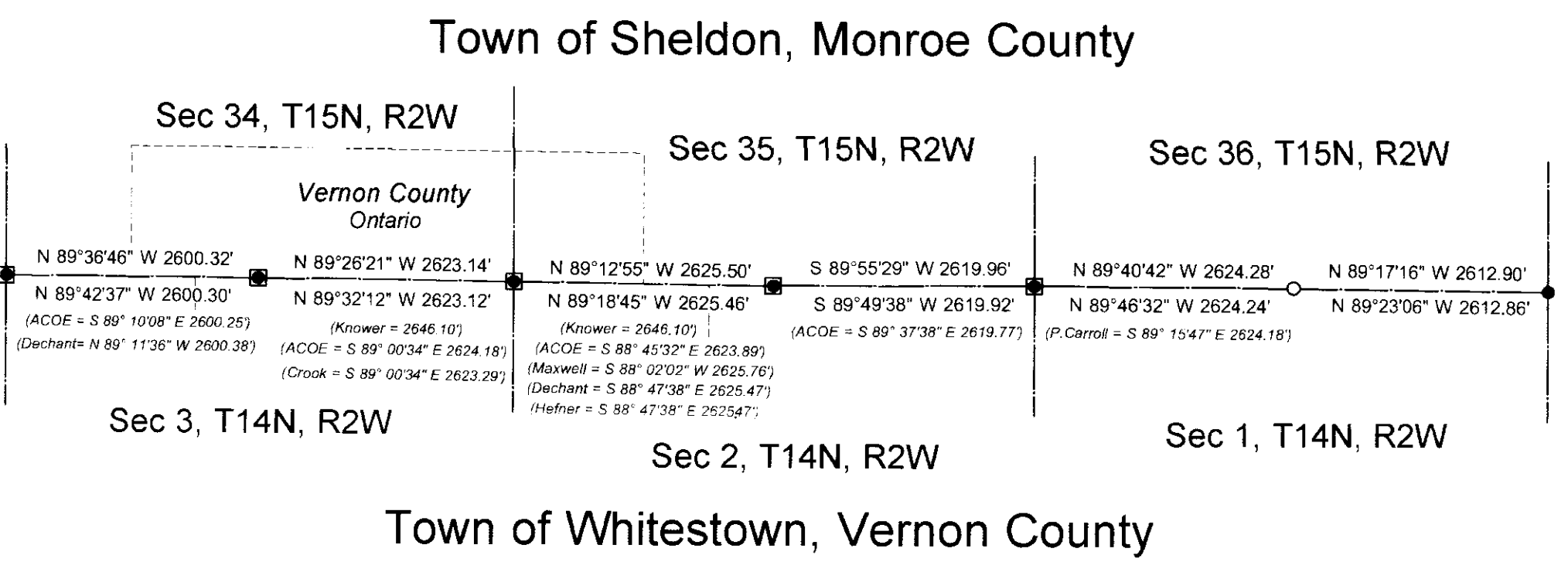
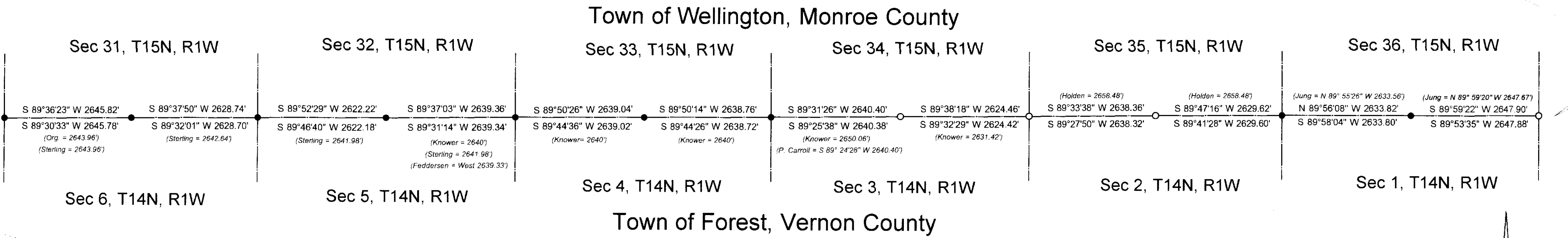
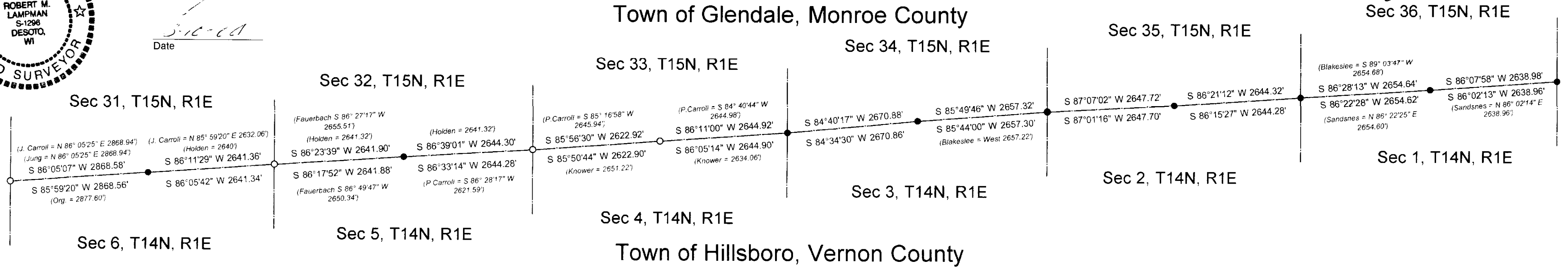
Robert M. Lampman R.L.S. S-1296
 Date: 3-10-04

MAR 15 2004

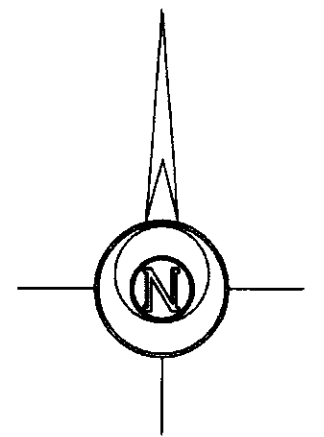
G. Jacobson

Sec 36, T15N, R1E

Juneau County



- LEGEND:**
- Set Vernon County Lunde Monument
 - Existing Monroe County Cast Iron Monument
 - Existing Brass Capped ACOE Monument
 - () Previously Recorded Bearing and/or Distance
- Note: Record Government Distance 2640' Unless Noted Otherwise

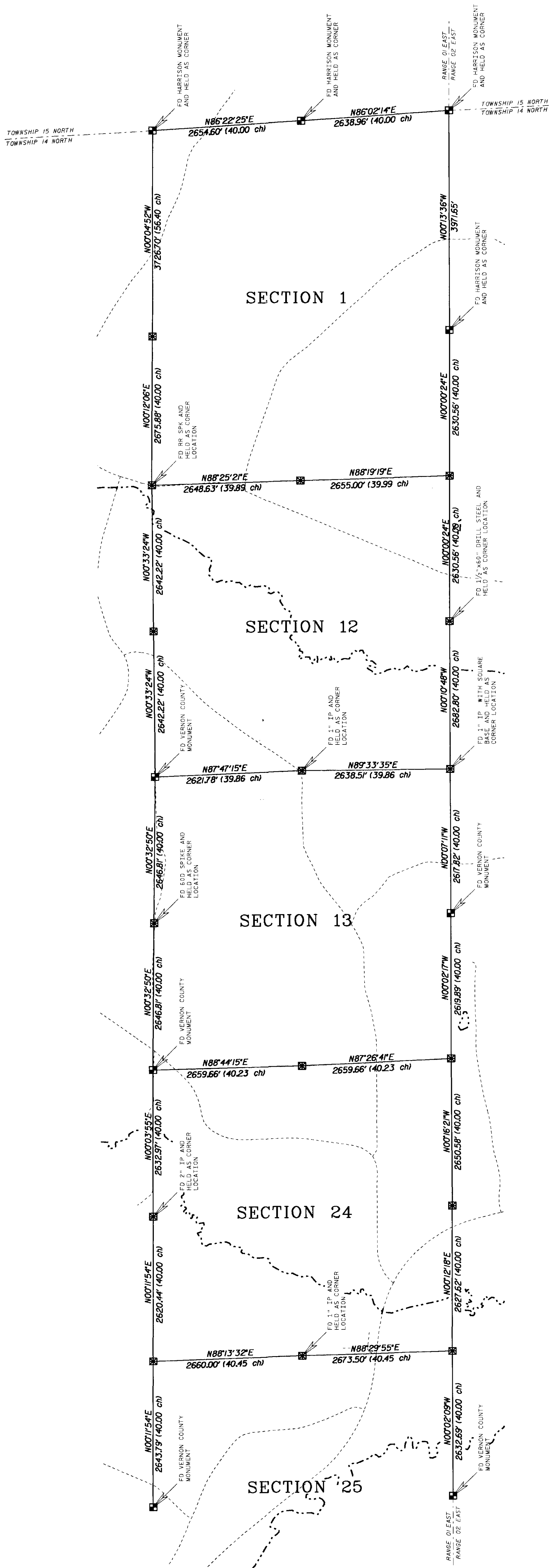


SCALE: 1" = 1500'

NOTES:
 Bearings and distances shown are inverses between grid coordinate values as recorded on public land survey monument records prepared as part of this remonumentation project. Distances are rounded to the nearest even hundredth of a foot. Vernon County Coordinate inverses are shown above the lines. Monroe County Coordinate inverses are shown below the lines. Distances inversed between Vernon County Coordinates are different from those inversed between Monroe County Coordinates as a result of different design elevations associated with the coordinate system parameters and definitions. A difference of 100 feet in design elevation results in a slight difference in scale factors. Bearing differences result from different origins of longitude and latitude defining the two county coordinate systems. The coordinate values behind these inverses are NAD83(1991) geodetic coordinates converted to county coordinates as per parameters defined in a 1995 publication titled Wisconsin Coordinate Systems. Conversions were checked with "WISCON" software. The geodetic values were referenced to NAD83(1991) as per the existing Monroe County geodetic control network.

Vernon County Section Corner Remonumentation Project 2003		
Northeast Corner of Section 1, Town 14 North, Range 1 East, Town of Hillsboro to Northwest Corner of Section 3, Town 14 North, Range 2 West, Town of Whitestown		
Prepared For:	Vernon County Land Information Committee	
Prepared By:	Lampman & Associates E750 Roberts Road De Soto, Wisconsin 54624 Phone: (608)648-2288	
Date:	March 10, 2004	Project No.: 1040-1121-03

MONROE COUNTY



JUNEAU COUNTY

LEGEND

- - EXISTING COUNTY MONUMENT
- - SET VERNON COUNTY MONUMENT
- (ch) - RECORD GOVERNMENT DISTANCES IN CHAINS
- - - - - EDGE OF WATER OR TRIBUTARY
- - - - - EXISTING ROADWAY

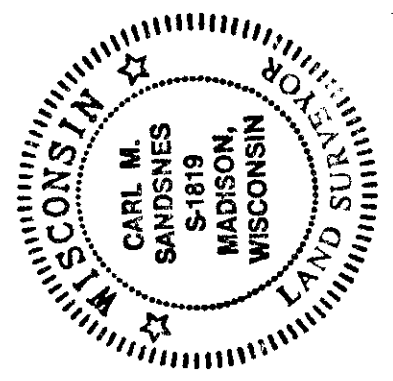
BEARINGS ARE BASED ON THE VERNON COUNTY COORDINATE SYSTEM.

SURVEYORS CERTIFICATE

I, Carl M. Sandnes, Professional Land Surveyor, hereby certify that I have surveyed and mapped this plat of survey, and the information shown hereon is correct and accurate to the best of my knowledge and belief, and was prepared in accordance with the provisions of the Wisconsin Statutes, Chapter 193, and the rules and regulations of the Wisconsin Board of Land Surveyors.

Dated this 31st day of December, 1998.

Carl M. Sandnes
Professional Land Surveyor, S-1819.



SCALE 1" = 1000'

DR. BY: M. REIGEL	BOOK NO. VERNON COUNTY
CHK. BY: C. SANDNES	PAGE NO. 214N-0017
DATE: DEC. 31, 1998	JOB NO. 54-0168.00
	SCALE 1" = 1000'

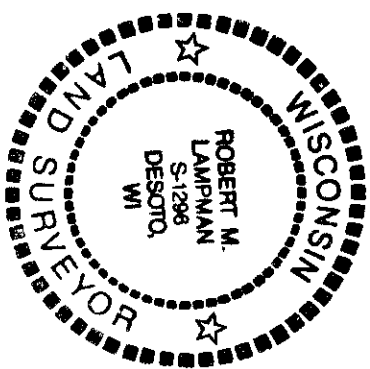
VERNON COUNTY REMONUMENTATION

PLANS PREPARED BY
AVRES
Engineers/Architects
Surveyors & Associates, Inc.
Madison, Wisconsin (608)249-0471

SECTIONS 1, 12, 13, 24 of TOWNSHIP 14 NORTH, RANGE OF EAST, VERNON COUNTY, WISCONSIN

SHEET NO.

Surveyor's Certificate:
 I, Robert M. Lampman, Registered Land Surveyor, do hereby certify that to the best of my knowledge and belief, the within drawing is a true and correct representation of the location of section corner monuments found and/or placed during this section corner remonumentation project as well as the grid coordinate inverses between the same.



Robert M. Lampman R.L.S. S-1296

Date: 3-10-04

Section Corner Remonumentation Data Sheet

MAR 15 2004

Sec 36, T15N, R1E

Sec 35, T15N, R1E

Sec 33, T15N, R1E

Sec 34, T15N, R1E

Sec 31, T15N, R1E

Sec 32, T15N, R1E

Sec 31, T15N, R1E

Juneau County

Sec 1, T14N, R1E

Sec 2, T14N, R1E

Sec 3, T14N, R1E

Sec 4, T14N, R1E

Sec 5, T14N, R1E

Sec 6, T14N, R1E

Town of Hillsboro, Vernon County

Town of Wellington, Monroe County

Town of Forest, Vernon County

Sec 33, T15N, R1W

Sec 34, T15N, R1W

Sec 35, T15N, R1W

Sec 36, T15N, R1W

Sec 31, T15N, R1W

Sec 32, T15N, R1W

Sec 33, T15N, R1W

Sec 34, T15N, R1W

Sec 35, T15N, R1W

Sec 36, T15N, R1W

Town of Sheldon, Monroe County

Sec 5, T14N, R1W

Sec 4, T14N, R1W

Sec 3, T14N, R1W

Sec 2, T14N, R1W

Sec 6, T14N, R1W

Sec 5, T14N, R1W

Sec 4, T14N, R1W

Sec 3, T14N, R1W

Sec 2, T14N, R1W

Sec 1, T14N, R1W

Town of Whiteshew, Vernon County

Sec 2, T14N, R2W

Sec 1, T14N, R2W

Sec 3, T14N, R2W

Sec 4, T14N, R2W

Sec 5, T14N, R2W

Sec 6, T14N, R2W

Town of Whiteshew, Vernon County

Sec 34, T15N, R2W

Vernon County
Ohio

Sec 35, T15N, R2W

Sec 36, T15N, R2W

Sec 35, T15N, R2W

Sec 34, T15N, R2W

Sec 33, T15N, R2W

Sec 34, T15N, R2W

Sec 35, T15N, R2W

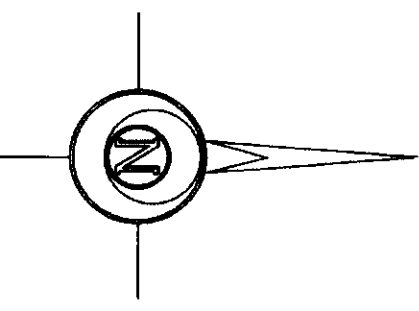
Sec 36, T15N, R2W

Sec 35, T15N, R2W

Sec 34, T15N, R2W

Sec 33, T15N, R2W

SCALE: 1" = 1500'



LEGEND:

- Set Vernon County Lunde Monument
- Existing Monroe County Cast Iron Monument
- Existing Brass Capped ACOE Monument
- () Previously Recorded Bearing and/or Distance

Note: Record Government Distance 2640' Unless Noted Otherwise

NOTES:

Bearings and distances shown are inverses between grid coordinate values as recorded on public land remonumentation records prepared as part of this remonumentation project. Distances are rounded to the nearest even hundredth of a foot. Vernon County Coordinate Inverses are shown below the lines. Monroe County Coordinate Inverses are shown above the lines. Distances inverted between Vernon County Coordinates are different from those inverted between Monroe County Coordinates as a result of different design elevations associated with the coordinate system parameters and definitions. A difference of 100 feet in design elevation results in a slight difference in scale factors. Bearing differences result from different origins of longitude and latitude defining the two county coordinate systems. The coordinate values behind these inverses are NAD83(1991) geodetic coordinates converted to county coordinates as per parameters defined in a 1995 publication titled "Wisconsin Coordinate Systems Conversions" were checked with "WISCONSIN" Software. The geodetic values were referenced to NAD83(1991) as per the existing Monroe County geodetic control network.

Prepared For:
Vernon County Land Information Committee

Prepared By:
Lampman & Associates
 E/750 Roberts Road
 De Soto, Wisconsin 54624
 Phone: (608) 648-2288

Vernon County Section Corner Remonumentation Project 2003
 Northeast Corner of Section 1, Town 14 North, Range 1 East, Town of Hillsboro to Northwest Corner of Section 3, Town 14 North, Range 2 West, Town of Whiteshew

Date: March 10, 2004
 Scale: 1" = 1500'
 Project No.: 1040-1121-03

Drafted By: J.A.Z.

File No.: 34-D-2