

**FOR VERNON COUNTY, WISCONSIN**

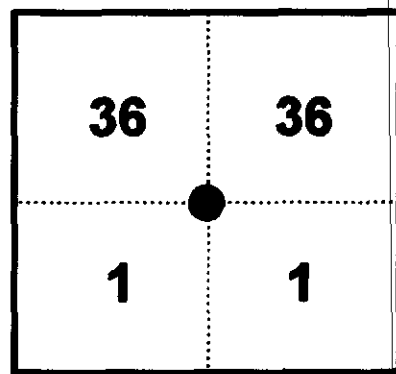
Note: This form is intended and designed to fulfill all requirements of Wisconsin Administrative Code, Chapter AE-7.08, U.S. Public Land Survey Monument Record (3)(a)(b)(c)(d)(e)(f)(g)(h)(i). Use additional sheets if necessary.

(a) The One Quarter corner common to Sections 1, 36

Township(s) 14, 15 North, Range(s) 1 East.

Vernon County Coordinates: N 213140.647

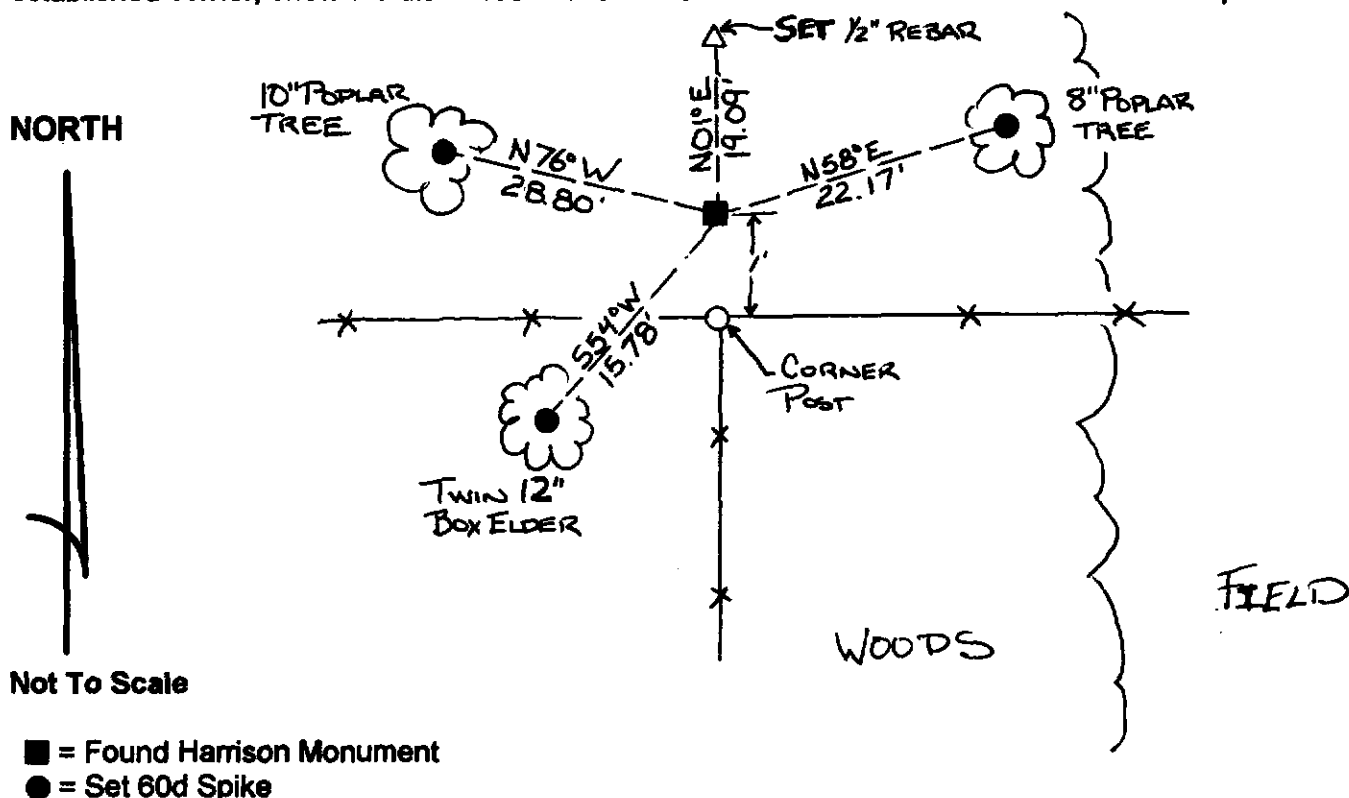
Datum: \_\_\_\_\_ E 851914.018



(b)(f)(h) Description of monument found at this corner and if it was accepted, state all evidence (material, testimonial, occupational, plats records, other monuments) used as a basis for accepting. If not accepted or nothing was found, state evidence used as basis for establishing location and what was set. If re-established through lost corner proportionate methods, indicate all monuments, distances and directions used.

11-8-98 - I found ~~the~~ quarter corner monument at intersection of fence lines East, West, South and accepted as true corner location and set witness monuments as shown.

(c)(d)(e) Plan view of corner with ties to at least four (4) witness monuments. If in disagreement with previously established corner, show the distances between the two corners and also indicate ties to disputed corner.



Not To Scale

(I) Certify that the corner location on this record was determined by me or under my direction and control and that this U.S. Public Land survey Monument Record is correct and complete to the best of my knowledge and belief.



*[Handwritten Signature]*

*12/22/98*

Signature

Date

Filed for record in Vernon County Surveyor's Office on \_\_\_\_\_ INDEX NO. \_\_\_\_\_

*(13) see next pg. also*

DEC 17 1997

CERTIFIED LAND CORNER

STATE OF WISCONSIN )  
COUNTY OF VERNON ) S.S.

CERTIFICATE

I, F. CURTIS CROOK, do hereby certify that on the 23rd day of OCTOBER 1997, I found (evidence) ~~(evidence)~~ of the S 1/4 corner of SECTION 36, T 14 N, R 1 E, Fourth Principal Meridian, and I re-established said corner according to the Wisconsin Statutes as shown and described hereon.

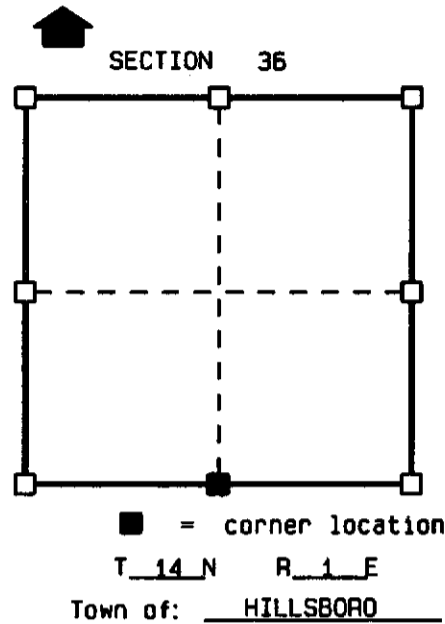
Dated this 15th day of Dec 1997

F. CURTIS CROOK R.L.S. S-1292

Title



Seal



History of original corner establishment:

ORIGINAL CORNER ESTABLISHED BY J.E. WHITCHER IN 1845.  
W.H. KNOWER VISITED THIS CORNER IN 1889 AS PART OF A SURVEY IN SECTION 1-13-1 AND MADE ONE NEW TIE FOR THE CORNER.

Description of corner evidence found:

FOUND 3/4" IRON REBAR AT S 1/4 CORNER OF SECTION 36-14N-1E. SAID REBAR MARKED WITH RICHARD T. BLAKESLEE FLAG. SAID REBAR MATCHED WELL WITH ORIGINAL DISTANCES ALONG THE SOUTH LINE OF SECTION 36 AND FELL WITHIN 0.5'± OF BEING ON A STRAIGHT LINE BETWEEN SW AND SE CORNERS OF SECTION 36. ACCEPTED LOCATION & REPLACED REBAR WITH VERNON COUNTY MONUMENT. MADE TIES AS SHOWN BELOW.

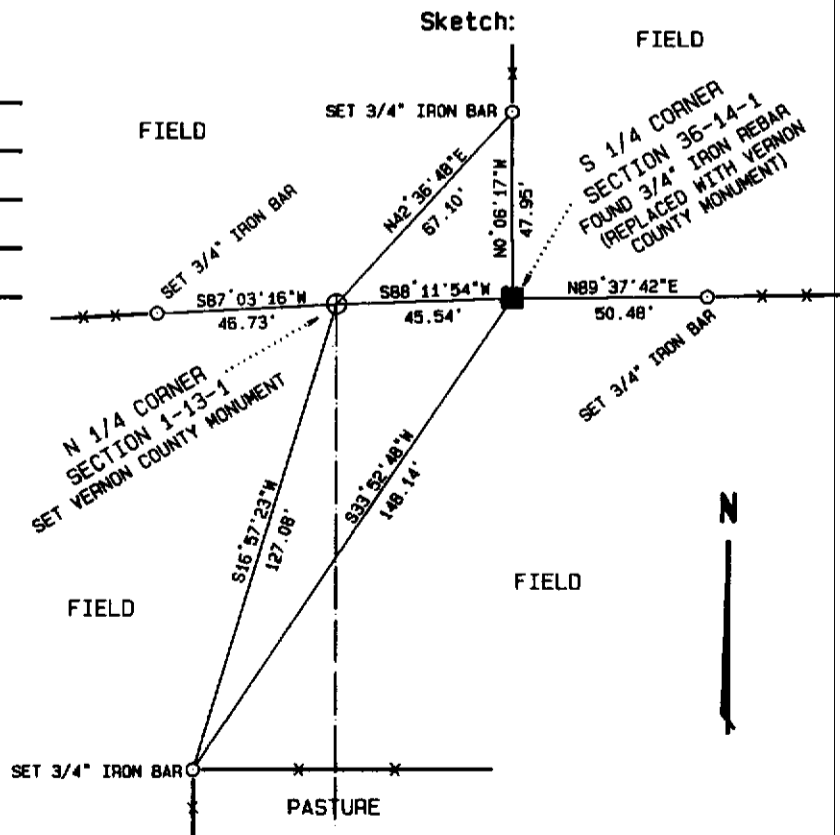
Description of corner and witness monuments, references and accessories used to perpetuate the original or re-established location of this corner:

Witnesses to corner location:

F. CURTIS CROOK

CHAD CROOK

NOTES:  
DRAWING IS NOT TO SCALE.  
BEARINGS ARE REFERENCED TO PROJECT.  
VERNON COUNTY MONUMENTS ARE LUNDE MONUMENTS.  
SET SURVEY MARKER SIGN NEAR EACH MONUMENT.



(THIS CORNER SET AS PART OF VERNON COUNTY'S 1997 REMONUMENTATION PROJECT.)

VERNON COUNTY COORDINATES

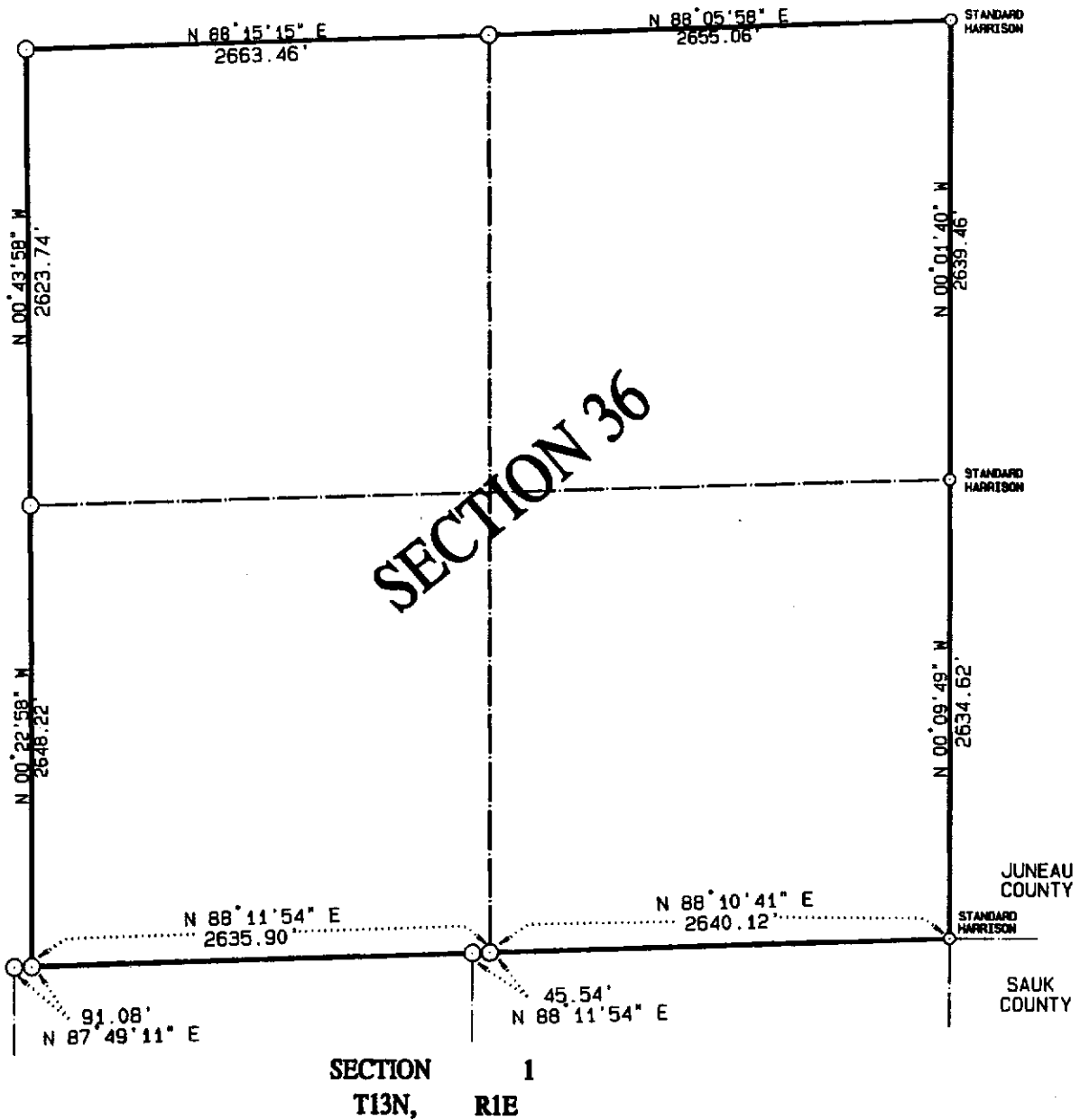
North (Y)	East (X)
180272.121	851966.007

13A

DATA SHEET

SECTION 36, T14N, R1E

TOWN OF HILLSBORO, VERNON COUNTY



NOTE: ALL CORNERS (WITH EXCEPTION OF THOSE NOTED) ARE VERNON COUNTY MONUMENTS.

THIS DATA SHEET PREPARED AS PART OF VERNON COUNTY'S 1997 REMONUMENTATION PROJECT.