

VERNON COUNTY CERTIFIED U.S. PUBLIC LAND SURVEY MONUMENT RECORD

INSTRUCTIONS: THIS RECORD SHALL SHOW THE LOCATION OF THE CORNER AND SHALL INCLUDE ALL OF THE FOLLOWING ELEMENTS (A-I) **VERNON COUNTY BRASS LUNDE MONUMENT FOUND AT QUARTER CORNER.**

(A) IDENTIFY THE CORNER BY REFERENCE TO THE U.S. PUBLIC LAND SURVEY SYSTEM

■ = CORNER MONUMENT RESTORED

WITNESSES TO CORNER LOCATION:

- 1)
- 2)
- 3)

STATE PLANE COORDINATES (WISCONSIN SOUTH ZONE)

NORTHING:
EASTING:

VERNON COUNTY COORDINATES
NORTHING: **NAD83(2011)** N 182837.67
EASTING: E 849313.53

COORDINATES SHOWN CONFORM TO "SURVEY GRADE" SPEC. OF WCSA.

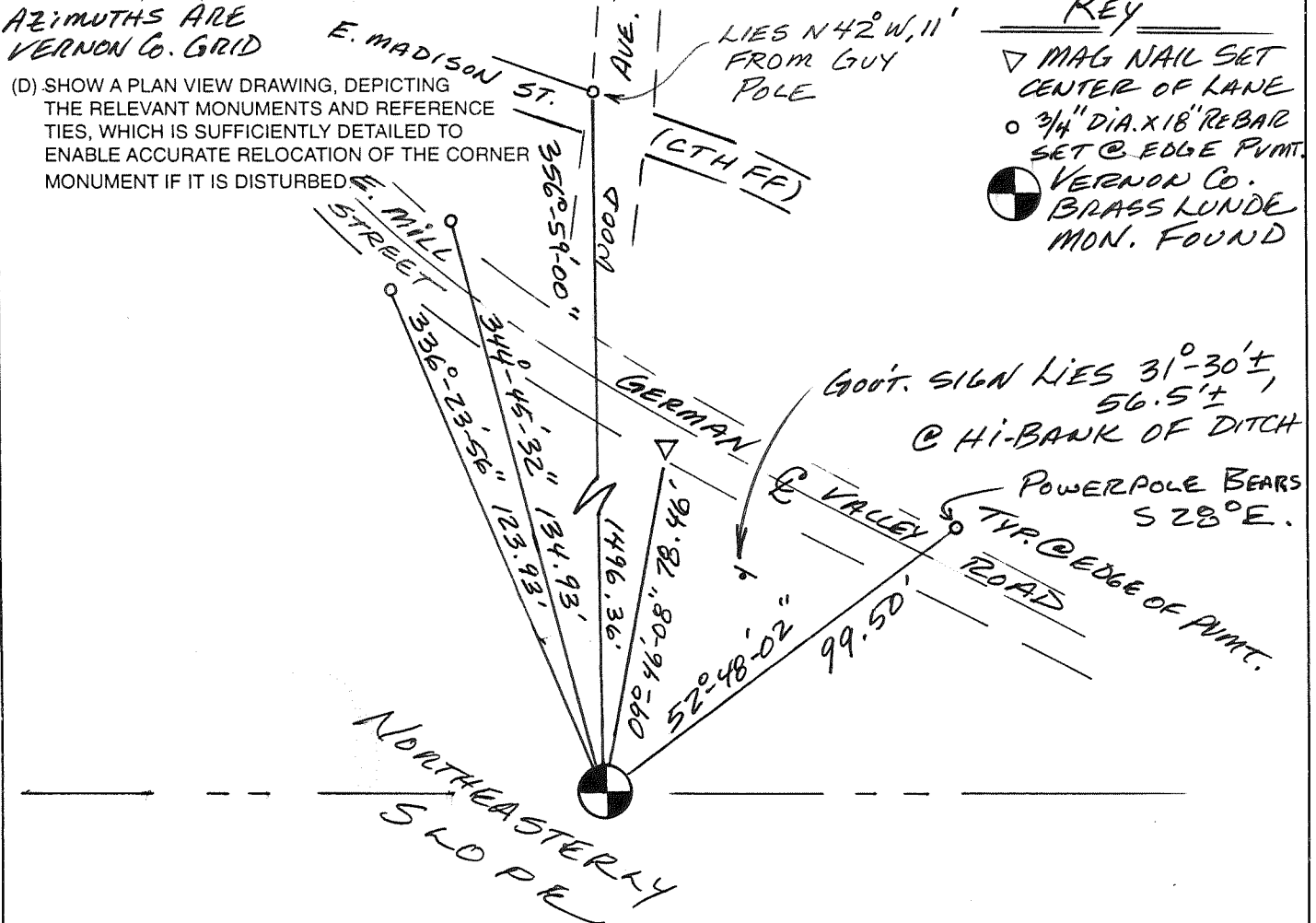
(B) DESCRIBE ANY RECORD EVIDENCE, MONUMENT EVIDENCE, OCCUPATIONAL EVIDENCE, TESTIMONIAL EVIDENCE OR ANY OTHER MATERIAL EVIDENCE YOU CONSIDERED, AND WHETHER THE MONUMENT WAS FOUND OR PLACED.

ACCEPTED LOCATION OF CORNER PER TIE SHEET BY F. CURTIS CROOK DATED 12/15/97. UPDATED TIES.

(C) IN THE PLAN VIEW DRAWING BELOW, PROVIDE REFERENCE TIES TO AT LEAST 4 WITNESS MONUMENTS OR, IF THE LOCATION IS WITHIN A MUNICIPALITY, TO AT LEAST 2 WITNESS MONUMENTS. (WITNESS MONUMENTS SHALL BE MADE OF CONCRETE, NATURAL STONE, IRON, OR OTHER EQUALLY DURABLE MATERIAL.) DESCRIBE WITNESS MONUMENTS.

AZIMUTHS ARE VERNON Co. GRID

(D) SHOW A PLAN VIEW DRAWING, DEPICTING THE RELEVANT MONUMENTS AND REFERENCE TIES, WHICH IS SUFFICIENTLY DETAILED TO ENABLE ACCURATE RELOCATION OF THE CORNER MONUMENT IF IT IS DISTURBED



(E) DESCRIBE ANY MATERIAL DISCREPANCY BETWEEN THE LOCATION OF THE CORNER AS RESTORED OR REESTABLISHED AND THE LOCATION OF THAT CORNER AS PREVIOUSLY RESTORED OR REESTABLISHED BY DISTANCE AND DIRECTION. SHOW THE DISCREPANCY ON THE PLAN VIEW DRAWING UNDER (D), ABOVE. SHOW THE DISTANCES BETWEEN THE CORNER AS PREVIOUSLY RESTORED OR REESTABLISHED AND (1) THE CORNER AS RESTORED OR REESTABLISHED, AND (2) TO AT LEAST 2 OF THE WITNESS MONUMENTS AS SHOWN ON THE DRAWING IN (D), ABOVE.

NONE.

(F) WAS THE CORNER RESTORED THROUGH ACCEPTANCE OF (1) AN OBLITERATED EVIDENCE LOCATION, OR (2) A FOUND PERPETUATED LOCATION?

(2)

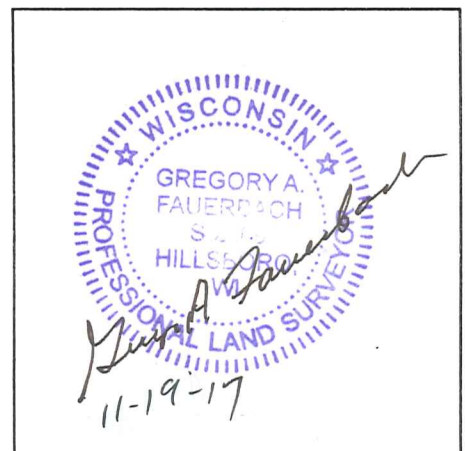
(G & H) WAS THE CORNER REESTABLISHED THROUGH LOST CORNER PROPORTIONATE METHODS? IF SO SHOW THE METHOD, INCLUDING THE DIRECTION AND DISTANCES TO OTHER PUBLIC LAND SURVEY CORNERS USED AS EVIDENCE OR USED FOR PROPORTIONING IN DETERMINING THE CORNER LOCATION.

No.

AFFIX LAND SURVEYOR SEAL

(I) I, GREG FAUERBACH CERTIFY THAT THE LOCATION SHOWN ON THIS RECORD WAS DETERMINED BY ME OR UNDER MY DIRECTION AND CONTROL AND THAT THIS U.S. PUBLIC LAND SURVEY MONUMENT RECORD IS CORRECT AND COMPLETE TO THE BEST OF MY KNOWLEDGE AND BELIEF.

Greg Fauerbach 11-19-17
SIGNATURE DATE



55117

DEC 17 1997

CERTIFIED LAND CORNER

STATE OF WISCONSIN)
COUNTY OF VERNON) S.S.

CERTIFICATE

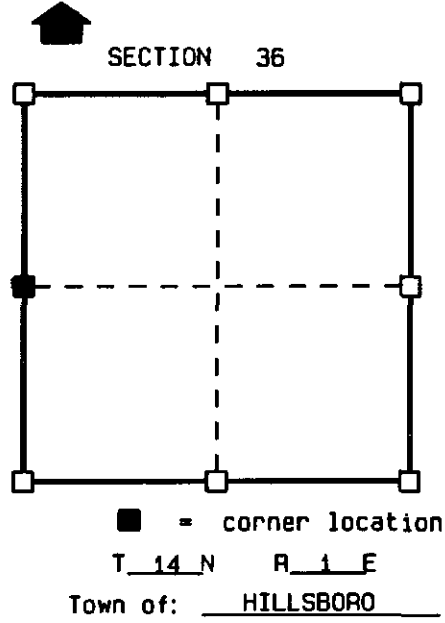
I, F. CURTIS CROOK, do hereby certify that on the 27th day of NOVEMBER 1997, I found (evidence) ~~(no evidence)~~ of the W 1/4 corner of SECTION 36, T 14 N, R 1 E, Fourth Principal Meridian, and I re-established said corner according to the Wisconsin Statutes as shown and described hereon.

Dated this 15th day of Dec 1997

F. CURTIS CROOK R.L.S. S-1292



Seal



History of original corner establishment:

ORIGINAL CORNER ESTABLISHED BY JAMES M. MARSH IN 1845.
C.M. STERLING VISITED AND MADE TWO NEW TIES FOR THE CORNER IN 1894.
FOUND ON FILE SURVEYS BY JOHN L. BREY CALLING FOR AN EXISTING 3/4" IRON ROD AT THE CORNER.
FOUND CERTIFIED SURVEY MAPS BY JAMES L. CARROLL CALLING FOR AN EXISTING 1-1/4" IRON ROD AT THE CORNER.

Description of corner evidence found:

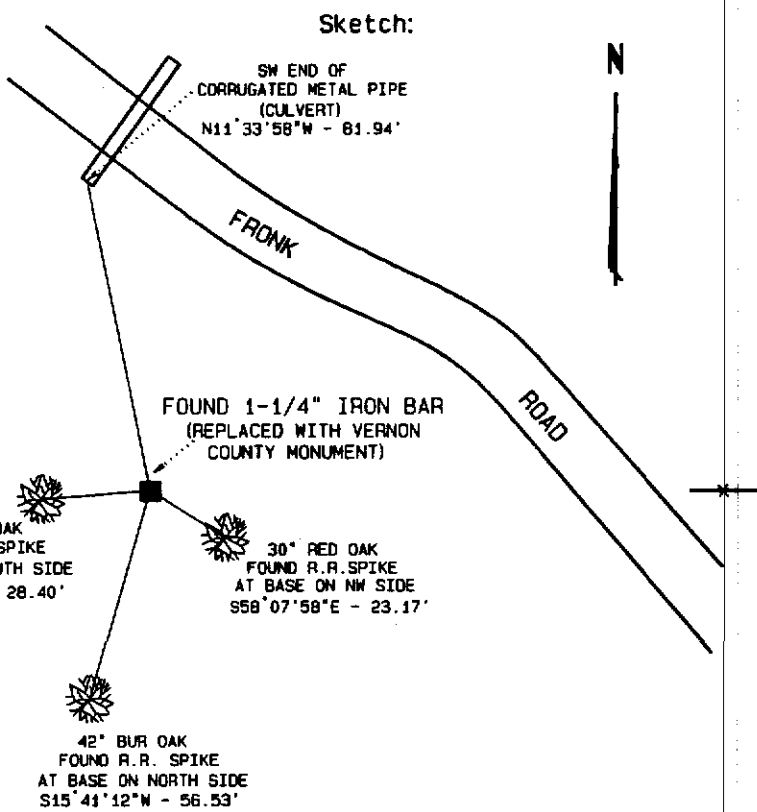
RETRACED SURVEYS BY JOHN L. BREY IN ORDER TO LOCATE THE EXISTING IRON. A 1-1/4" IRON BAR WAS FOUND.
THE LOCATION OF THE IRON FOUND MATCHED DIMENSIONS GIVEN ON JOHN L. BREY'S SURVEY. (COPY IN V.286, P.27 OF DEEDS)
ACCEPTED THE LOCATION OF THE FOUND IRON AND REPLACED WITH A VERNON COUNTY MONUMENT.
LOCATED 3 TIES THAT WERE FOUND (NOT OF RECORD) AND MADE ONE NEW TIE AS SHOWN.

Description of corner and witness monuments, references and accessories used to perpetuate the original or re-established location of this corner:

Witnesses to corner location:

- F. CURTIS CROOK
- CHAD CROOK
- BRENT EWING

NOTES:
DRAWING IS NOT TO SCALE.
BEARINGS ARE REFERENCED TO PROJECT.
VERNON COUNTY MONUMENTS ARE LUNDE MONUMENTS.
SET SURVEY MARKER SIGN NEAR MONUMENT.



(THIS CORNER SET AS PART OF VERNON COUNTY'S 1997 REMONUMENTATION PROJECT.)

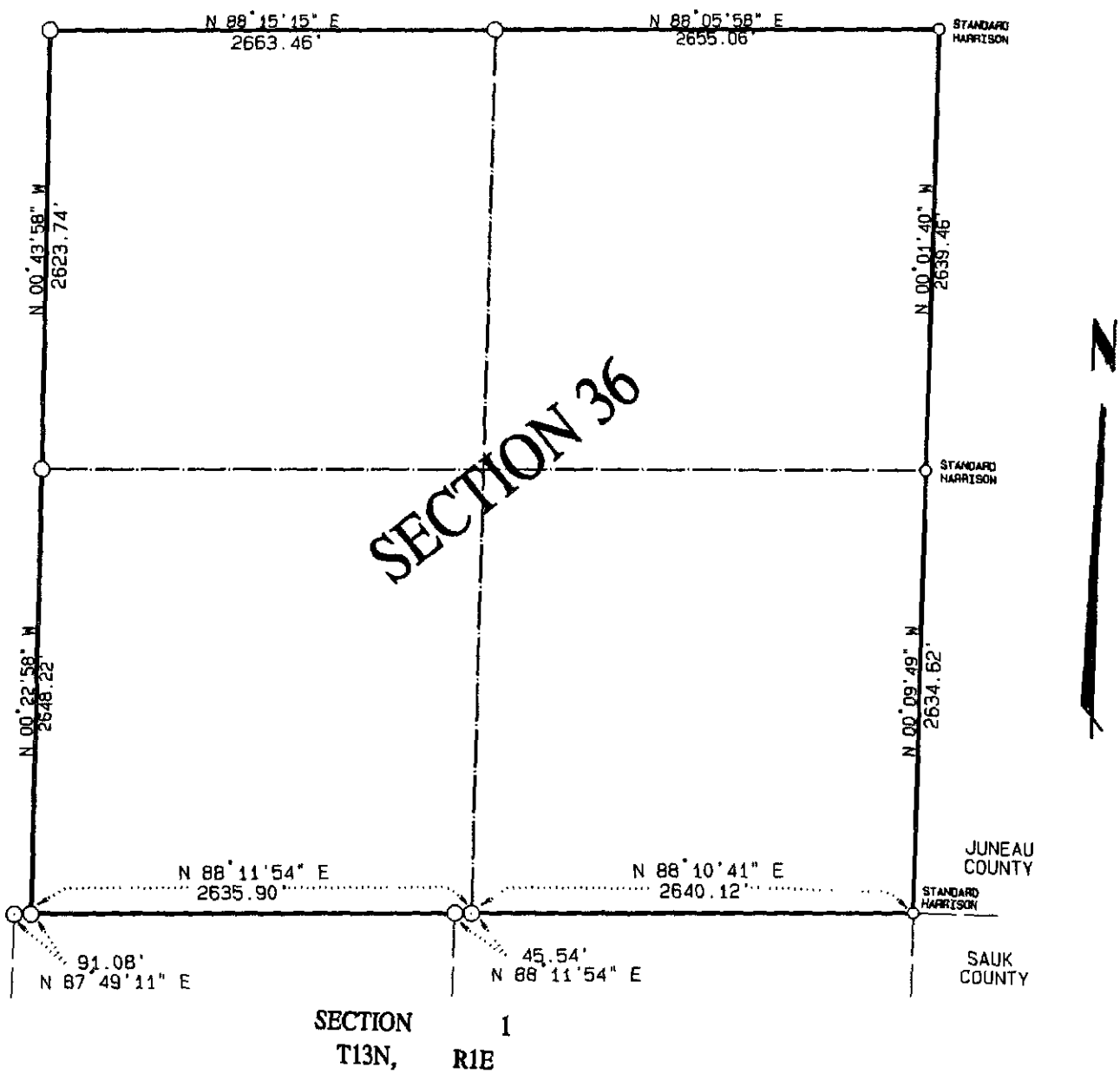
VERNON COUNTY COORDINATES

North (Y)	East (X)
182837.412	849313.721

48

DATA SHEET

SECTION 36, T14N, R1E
TOWN OF HILLSBORO, VERNON COUNTY



NOTE: ALL CORNERS (WITH EXCEPTION OF THOSE NOTED) ARE VERNON COUNTY MONUMENTS.

THIS DATA SHEET PREPARED AS PART OF VERNON COUNTY'S 1997 REMONUMENTATION PROJECT.