

FOR VERNON COUNTY, WISCONSIN

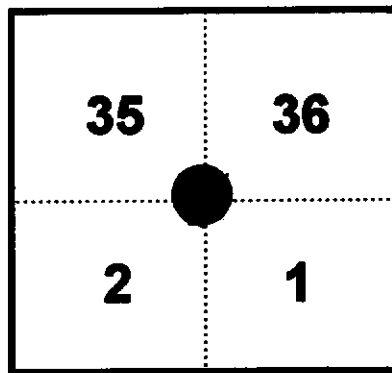
Note: This form is intended and designed to fulfill all requirements of Wisconsin Administrative Code, Chapter AE-7.08, U.S. Public Land Survey Monument Record (3)(a)(b)(c)(d)(e)(f)(g)(h)(i). Use additional sheets if necessary.

(a) The Section corner common to Sections 1,2,35,36

Township(s) 14,15 North, Range(s) 1 East.

Vernon County Coordinates: N 212972.749

Datum: _____ E 849264.735

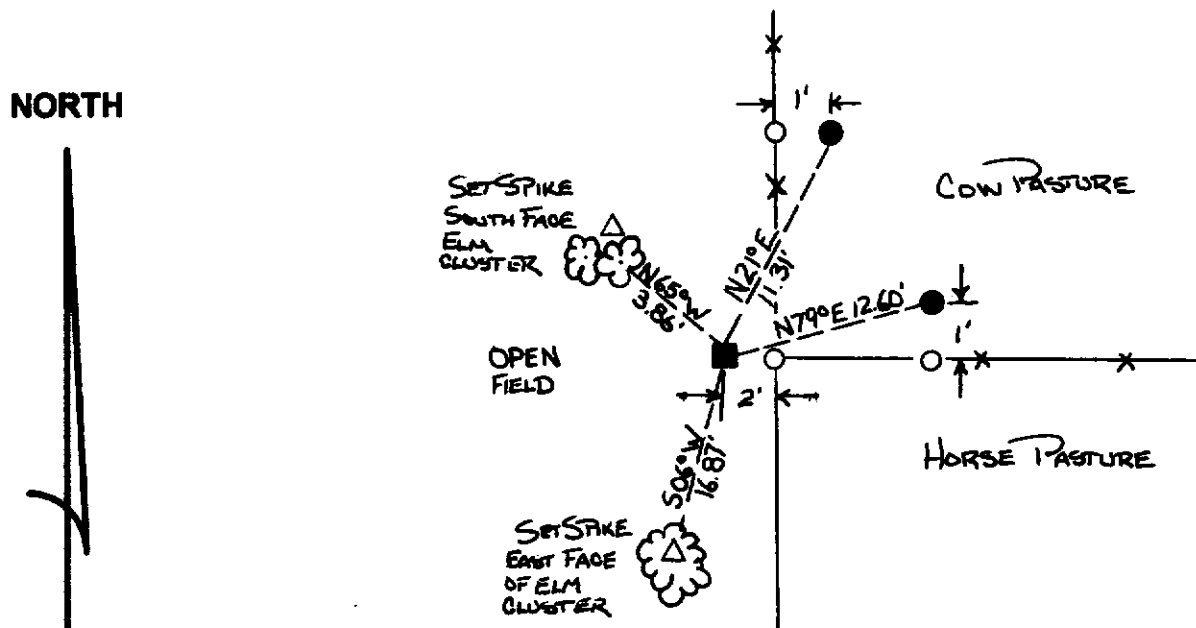


(b)(f)(h) Description of monument found at this corner and if it was accepted, state all evidence (material, testimonial, occupational, plats records, other monuments) used as a basis for accepting. If not accepted or nothing was found, state evidence used as basis for establishing location and what was set. If re-established through lost corner proportionate methods, indicate all monuments, distances and directions used.

12-26-1851 - J. E. Davidson established West line of Section 1 (96.40 chains).

11-8-1998 - I found corner monument at intersection of fences, accepted as true corner location and set witness monuments as shown.

(c)(d)(e) Plan view of corner with ties to at least four (4) witness monuments. If in disagreement with previously established corner, show the distances between the two corners and also indicate ties to disputed corner.



Not To Scale

- = Found Harrison monument
- = Set 1/2" rebar (1' from fence roots)
- △ = Set 60d nail
- = Wood fence post

(i) Certify that the corner location on this record was determined by me or under my direction and control and that this U.S. Public Land survey Monument Record is correct and complete to the best of my knowledge and belief.



[Signature]
Signature
12/22/98
Date

Filed for record in Vernon County Surveyor's Office on _____ INDEX NO. _____

(12) See next pg. also

DEC 17 1997

CERTIFIED LAND CORNER

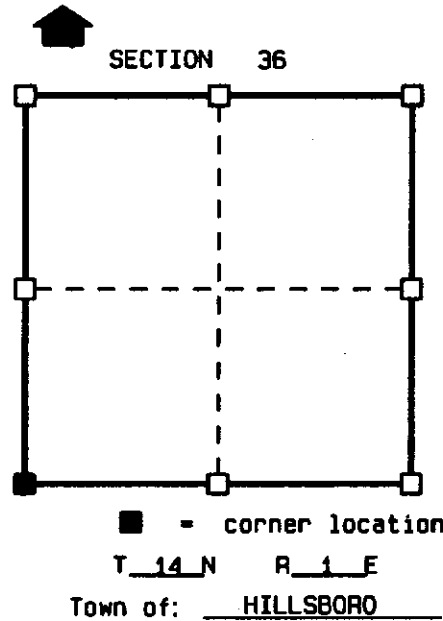
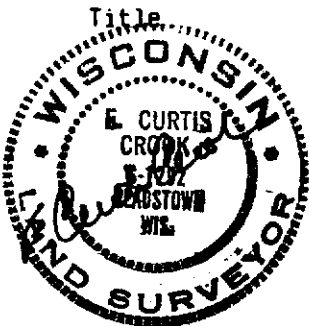
STATE OF WISCONSIN)
 COUNTY OF VERNON) S.S.

CERTIFICATE

I, F. CURTIS CROOK, do hereby certify that on the 8th day of OCTOBER 1997, I found ~~(evidence)~~ (no evidence) of the SW corner of SECTION 36, T 14 N, R 1 E, Fourth Principal Meridian, and I re-established said corner according to the Wisconsin Statutes as shown and described hereon.

Dated this 15th day of Dec 1997

F. CURTIS CROOK R.L.S. S-1292



Seal

History of original corner establishment:

ORIGINAL CORNER ESTABLISHED BY J.E. WHITCHER IN 1845.
 W.H. KNOWER VISITED THE CORNER IN 1887 & 1889 DURING SURVEYS IN SECTIONS 2 & 1 OF T13N, R1E, MAKING ONE NEW TIE FOR THIS CORNER IN 1889.

Description of corner evidence found:

FOUND 3/4" IRON BAR BY RICHARD T. BLAKESLEE AT THE NW CORNER SECTION 1-13N-1E. ESTABLISHED SW CORNER SECTION 36-14N-1E AT RECORDED DISTANCE FROM SAID BAR AND IN LINE WITH OCCUPATION AT THE CORNER AREA. THIS LOCATION MATCHED WELL WITH OCCUPATION ALONG SOUTH LINE OF SECTION 36-14N-1E AND MATCHES WELL WITH ORIGINAL RECORDED DISTANCES ALONG THE SOUTH LINE OF SECTION 36-14N-1E. SET VERNON COUNTY MONUMENT AND MADE TIES AS SHOWN.

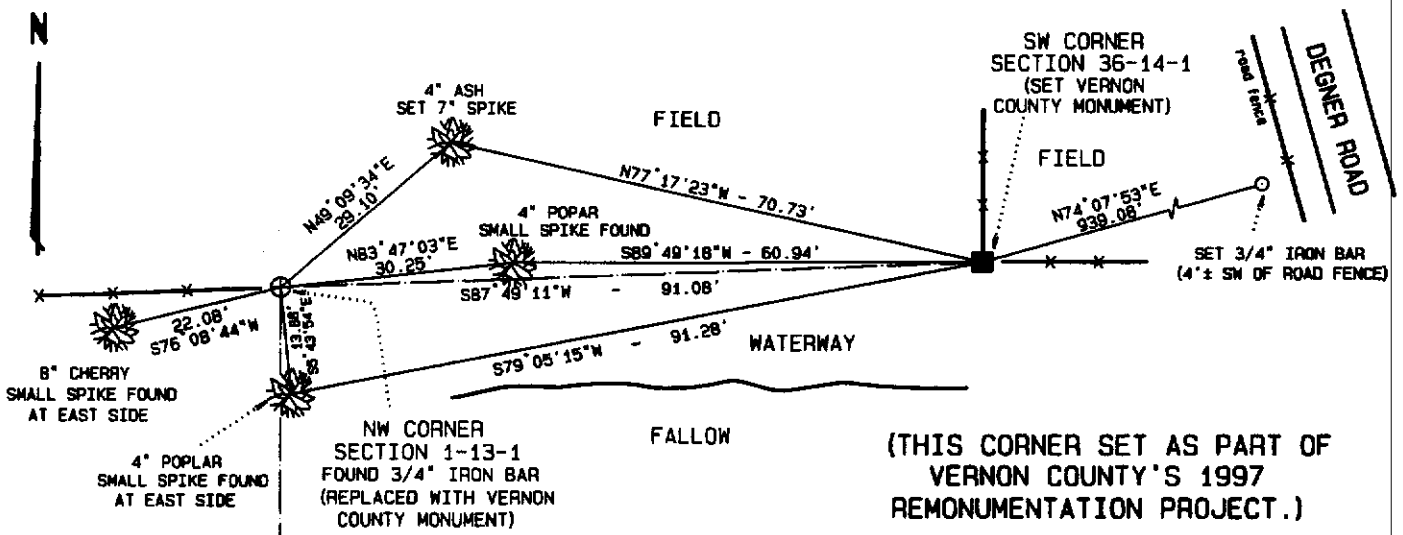
Description of corner and witness monuments, references and accessories used to perpetuate the original or re-established location of this corner:

Witnesses to corner location:

F. CURTIS CROOK
CHAD CROOK
WADE CROOK
MIKE EWING

Sketch:

NOTES:
 DRAWING IS NOT TO SCALE.
 BEARINGS ARE REFERENCED TO PROJECT.
 VERNON COUNTY MONUMENTS ARE LUNDE MONUMENTS.
 SET SURVEY MARKER SIGN NEAR EACH MONUMENT.



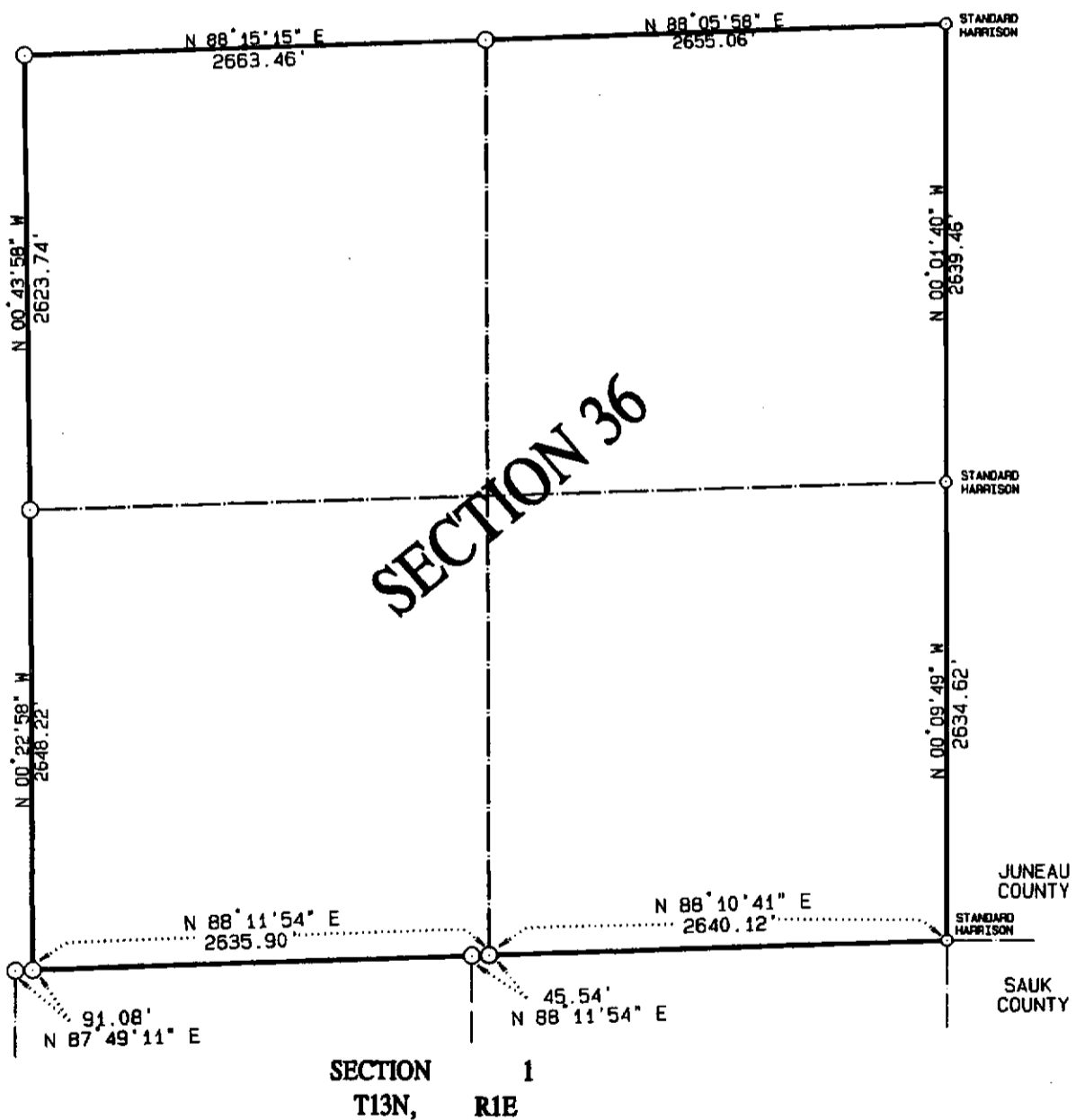
VERNON COUNTY COORDINATES

North (Y)	East (X)
180189.254	849331.409

1292

DATA SHEET

SECTION 36, T14N, R1E
TOWN OF HILLSBORO, VERNON COUNTY



NOTE: ALL CORNERS (WITH EXCEPTION OF THOSE NOTED)
ARE VERNON COUNTY MONUMENTS.

THIS DATA SHEET PREPARED AS PART OF
VERNON COUNTY'S 1997 REMONUMENTATION PROJECT.