

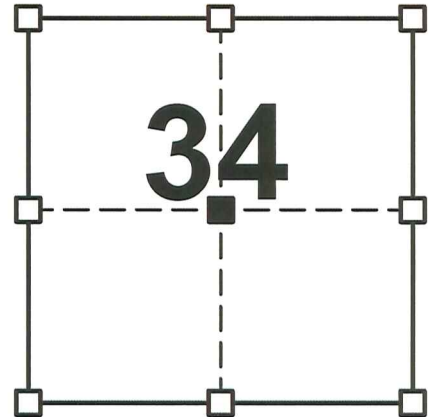
VERNON COUNTY CERTIFIED U.S. PUBLIC LAND SURVEY MONUMENT RECORD

DATUM: NAD 83 (2011) WISCRS	VERNON COUNTY COORDINATES	
CONTROL: COMBINATION OF GPS AND CONVENTIONAL FIELD CONTROL	NORTH	182,566.93'
	EAST	841,413.44'

*THE CENTER OF SECTION 34, TOWN 14 NORTH,
RANGE 1 EAST, TOWN OF HILLSBORO,
VERNON COUNTY, WISCONSIN.*

(A) IDENTIFY THE CORNER BY REFERENCE
TO THE U.S. PUBLIC LAND SURVEY SYSTEM

■ = CORNER MONUMENT RESTORED



*SECTION 34
TOWN 14 NORTH
RANGE 1 EAST*

WITNESS TO CORNER LOCATION:

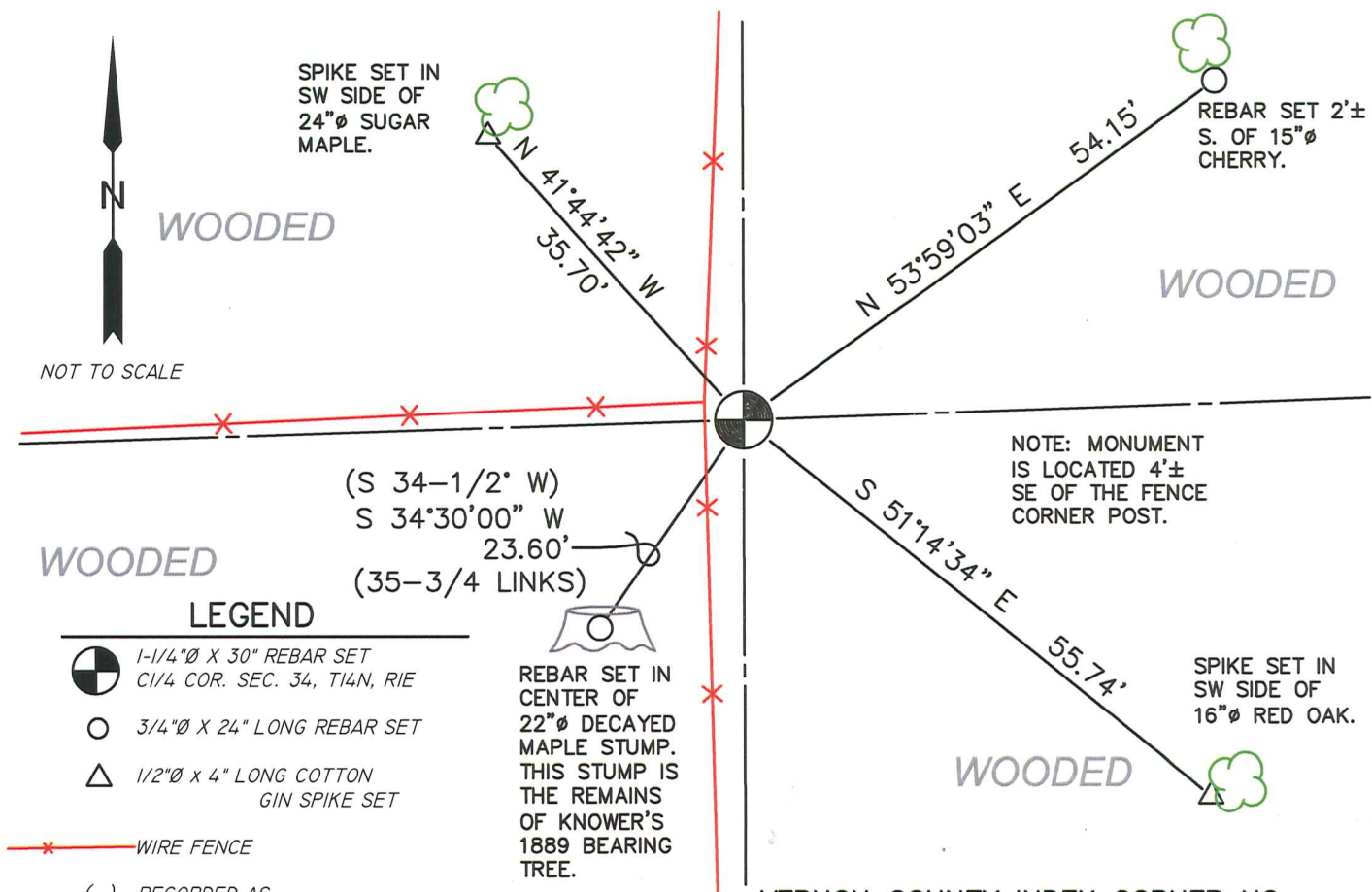
TODD T. RUMMLER

MARK A. MAHONEY

(B) DESCRIBE ANY RECORD EVIDENCE, MONUMENT EVIDENCE, OCCUPATIONAL EVIDENCE,
TESTIMONIAL EVIDENCE OR ANY OTHER MATERIAL EVIDENCE YOU CONSIDERED, AND
WHETHER THE MONUMENT WAS FOUND OR PLACED.

WM. H. KNOWER SUBDIVIDED SECTION 34 IN DECEMBER, 1889. HE ESTABLISHED THE CENTER OF SECTION 34 AND NOTES 2 BEARING TREES "MAPLE 6 S3-1/2W, 39-1/2 LINKS" AND "MAPLE 8 S34-1/2W, 35-3/4 LINKS". THE BEARING TREE TO THE SOUTH IS GONE, BUT A 22" DIAMETER MAPLE STUMP WAS FOUND TO THE SOUTHWEST OF A LONG STANDING THREE WAY FENCE CORNER. THIS STUMP IS IN ADVANCED DECAY, AND THE CENTER OF THE STUMP HAS ROTTED AWAY. THE WOOD IN THE OUTER SHELL OF THE STUMP WAS EXAMINED UNDER A 10X HAND LENS AND VERIFIED AS MAPLE. THE LOCATION OF THE CENTER OF SECTION 34 WAS DETERMINED BY MEASURING KNOWER'S BEARING AND DISTANCE FROM THE STUMP.

(C & D) IN THE PLAN VIEW DRAWING BELOW, PROVIDE REFERENCE TIES TO AT LEAST 4
WITNESS MONUMENTS. (WITNESS MONUMENTS SHALL BE CONCRETE, NATURAL STONE,
IRON OR OTHER EQUALLY DURABLE MATERIAL.) DESCRIBE WITNESS MONUMENTS.



- (E) DESCRIBE ANY MATERIAL DISCREPANCY BETWEEN THE LOCATION OF THE CORNER AS RESTORED OR REESTABLISHED AND THE LOCATION OF THAT CORNER AS PREVIOUSLY RESTORED OR REESTABLISHED BY DISTANCE AND DIRECTION. SHOW THE DISCREPANCY ON THE PLAN VIEW DRAWING UNDER (C), ABOVE. SHOW THE DISTANCES BETWEEN THE CORNER AS PREVIOUSLY RESTORED OR REESTABLISHED AND (1) THE CORNER AS RESTORED OR REESTABLISHED, AND (2) TO AT LEAST 2 OF THE WITNESS MONUMENTS AS SHOWN ON THE DRAWING IN (C), ABOVE.

NONE

- (F) WAS THE CORNER RESTORED THROUGH ACCEPTANCE OF (1) AN OBLITERATED EVIDENCE LOCATION, OR (2) A FOUND PERPETUATED LOCATION?

2.) A FOUND PERPETUATED LOCATION

- (G & H) WAS THE CORNER REESTABLISHED THROUGH LOST CORNER PROPORTIONATE METHODS? IF SO SHOW THE METHOD, INCLUDING THE DIRECTION AND DISTANCED TO OTHER PUBLIC LAND SURVEY CORNERS USED AS EVIDENCE OR USED FOR PROPORTIONING IN DETERMINING THE CORNER LOCATION.

NO.

AFFIX LAND SURVEYOR SEAL

- (I) I, TODD T. RUMMLER, PLS-2443 CERTIFY THAT THE CORNER LOCATION SHOWN ON THIS RECORD WAS DETERMINED BY ME OR UNDER MY DIRECTION AND CONTROL AND THAT THIS U.S. PUBLIC LAND SURVEY MONUMENT RECORD IS CORRECT AND COMPLETE TO THE BEST OF MY KNOWLEDGE AND BELIEF.

 12/11/2018
SIGNATURE DATE

