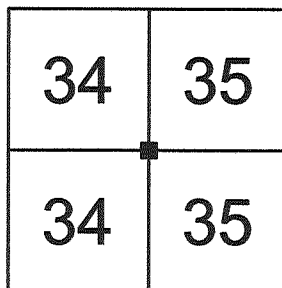


# U.S. PUBLIC LAND SURVEY MONUMENT RECORD VERNON COUNTY, WISCONSIN.

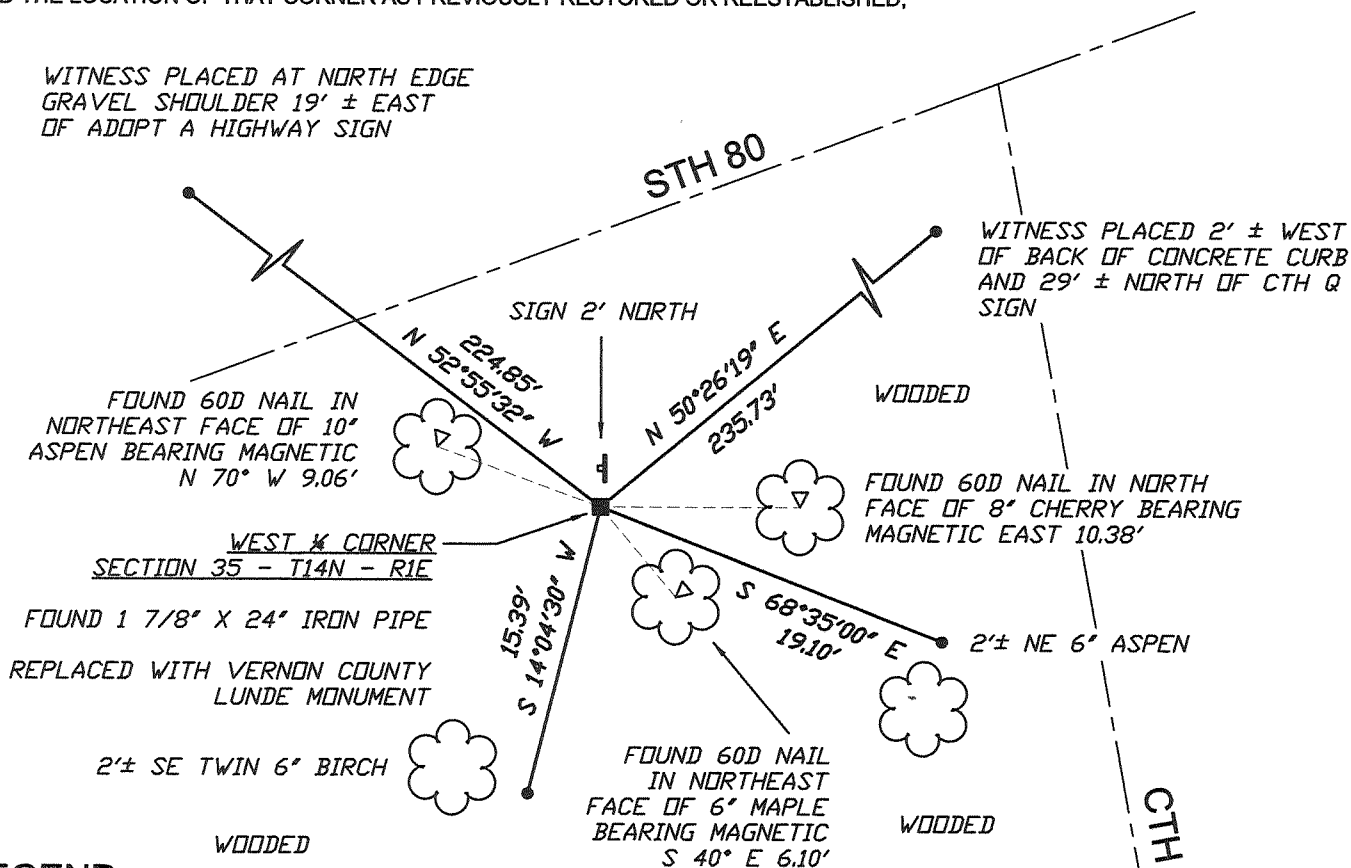
IN ACCORDANCE WITH WISCONSIN ADMINISTRATIVE CODE, CHAPTER A-E 7.08 (3) (A) - (I)

**LOCATION:** (A) THE IDENTITY OF THE CORNER, AS REFERENCED TO THE U.S. PUBLIC LAND SURVEY SYSTEM.

SECTION 35 - TOWN 14 N - RANGE 1 E  
 TOWNSHIP OF HILLSBORO (CITY)  
 TYPE OF CORNER WEST ONE-QUARTER CORNER  
 TYPE OF MONUMENT VERNON COUNTY LUNDE MONUMENT SET



**PLAN VIEW:** (C) REFERENCE TO AT LEAST 4 WITNESS MONUMENTS. WITNESS MONUMENTS SHALL BE CONCRETE, NATURAL STONE, IRON, BEARING TREES OR OTHER EQUALLY DURABLE MATERIAL, EXCEPT WOOD OTHER THAN BEARING TREES; (D) A PLAN VIEW DEPICTING THE RELEVANT MONUMENTS AND REFERENCE TIES WHICH ARE SUFFICIENT IN DETAIL TO ENABLE ACCURATE RELOCATION OF THE CORNER MONUMENT IF THE CORNER MONUMENT IS DISTURBED; (E) A DESCRIPTION OF ANY MATERIAL DISCREPANCY BETWEEN THE LOCATION OF THE CORNER AS RESTORED OR REESTABLISHED AND THE LOCATION OF THAT CORNER AS PREVIOUSLY RESTORED OR REESTABLISHED;



**LEGEND**

- PUBLIC LAND SURVEYING SYSTEM CORNER MONUMENT DESCRIBED
- 0.75" x 24" RE-BAR PLACED AS REFERENCE MONUMENT
- EXISTING FERROUS PIPE FOUND (SIZE AS NOTED)
- EXISTING FERROUS ROD FOUND (SIZE AS NOTED)
- ⊥ COUNTY SURVEYOR WITNESS SIGN ON STEEL CHANNEL POST PLACED

\*\* OTHER REFERENCES AND FEATURES ARE AS NOTED IN THE PLAN VIEW ABOVE

SCALE: 1" = 10 FEET  
UNLESS NOTED, BEARINGS ARE GRID

**SURVEYOR'S CERTIFICATE:** CHAPTER 7.08 (3) (I)

THE UNDERSIGNED HEREBY CERTIFIES THAT THE U.S. PUBLIC LAND SURVEY MONUMENT RECORD SHOWN WAS DETERMINED BY THEM OR UNDER THEIR DIRECTION AND IS CORRECT TO THE BEST OF THEIR KNOWLEDGE AND BELIEF.



*Matthew M. Filus*

THE EXCELSIOR GROUP, LLC  
 MATTHEW M FILUS, WISCONSIN REGISTERED LAND SURVEYOR S-2185

*9/1/2011*

DATE CERTIFIED

# U.S. PUBLIC LAND SURVEY MONUMENT RECORD VERNON COUNTY, WISCONSIN.

IN ACCORDANCE WITH WISCONSIN ADMINISTRATIVE CODE, CHAPTER A-E 7.08 (3) (A) - (I)

## RECOVERY PROCEDURES:

(B) A DESCRIPTION OF ANY RECORD EVIDENCE, MONUMENT EVIDENCE, OCCUPATIONAL EVIDENCE, TESTIMONIAL EVIDENCE OR ANY OTHER MATERIAL EVIDENCE CONSIDERED BY THE SURVEYOR, AND WHETHER THE MONUMENT WAS FOUND OR PLACED;

GOVERNMENT LAND OFFICE (GLO) ORIGINAL SURVEY  
DECEMBER 1851 - JANUARY 1852. J.E. DAVIDSON, SURVEYOR

NORTH BETWEEN SECTIONS 34 & 35, VARIATION 9°15' E

40.00 SET QUARTER SECTION POST  
CHERRY 10, S 40° W, 16 LINKS (10.56')  
CHERRY 12, S 88° E, 59 LINKS (38.94')

41.00 ENTER BOTTOM BEARS EAST DRY  
52.25 CREEK 20 LINKS WIDE BEARS EAST

VOLUME 1 - PAGE 356 SURVEYOR RECORDS. DECEMBER 16TH-21ST. 1889. W.H. KNOWER COUNTY SURVEYOR

IN THIS RECORD, W.H. KNOWER SUBDIVIDES SECTION 34, ESTABLISHING THIS CORNER, BUT NOT STATING A MONUMENT TYPE. A BEARING TREE IS NOTED AS AN ASPEN 7" IN DIAMETER BEARING N 15° W, 5½ LINKS (3.63').

SUBDIVISION PLATS

THE HEIGHTS, TOWN OF HILLSBORO, JULY 25TH, 1975. HENRY J. LENSCHOW, SURVEYOR

PLAT AND DESCRIPTION INDICATE AN EXISTING 1" IRON PIPE AT THE EAST ¼ CORNER OF SECTION 34, USED AS THE POINT OF COMMENCEMENT.

MODERN-ERA SURVEYS. 1996 THRU 2010

SURVEYORS PATRICK CARROLL, CURTIS CROOK, GAROLD A. SIME, PAUL E. FAIRCHILD AND KENNETH H. SCHUETTE HAVE FILED SURVEYS REFERENCING THE CORNER AS AN EXISTING PIPE VARYING IN SIZE FROM 1" TO 1 7/8".

THE EXCELSIOR GROUP, LLC, AUGUST, 2011. MATTHEW M FILUS, SURVEYOR

I HAVE FOUND NO EVIDENCE OR ACCESSORIES OF EITHER THE ORIGINAL GLO CORNER NOR KNOWER'S CORNER. IT APPEARS AS THOUGH THE AREA HAS BEEN LOGGED EXTENSIVELY, AS IT IS CURRENTLY A YOUNG-GROWTH FORRESTED AREA.

I HAVE FOUND THE 1 7/8" X 24" LONG PIPE OF RECORD AS WELL AS THREE REFERENCE TIES TO TREES [NOT OF RECORD] AS SHOWN ON SHEET 1. I HAVE VERIFIED IT'S POSITION BY EXISTING MONUMENTATION ALONG THE WEST LINE OF THE NW¼ OF SECTION 35, REPLACED THE PIPE WITH A VERNON COUNTY LUNDE MONUMENT, WITNESSED AS SHOWN ON SHEET 1 AND POSITIONED AS SHOWN ON SHEETS 4 AND 5 OF THIS DOCUMENT.

(E) A DESCRIPTION OF ANY MATERIAL DISCREPANCY BETWEEN THE LOCATION OF THE CORNER AS RESTORED OR REESTABLISHED AND THE LOCATION OF THAT CORNER AS PREVIOUSLY RESTORED OR REESTABLISHED;

NONE

(F) WHETHER THE CORNER WAS RESTORED THROUGH ACCEPTANCE OF AN OBLITERATED EVIDENCE LOCATION OR A FOUND PERPETUATED LOCATION;

A FOUND PERPETUATED LOCATION

(G) WHETHER THE CORNER WAS REESTABLISHED THROUGH LOST-CORNER PROPORTIONATE METHODS;

NO

## SURVEYOR'S CERTIFICATE: CHAPTER 7.08 (3) (I)

THE UNDERSIGNED HEREBY CERTIFIES THAT THE U.S. PUBLIC LAND SURVEY MONUMENT RECORD SHOWN WAS DETERMINED BY THEM OR UNDER THEIR DIRECTION AND IS CORRECT TO THE BEST OF THEIR KNOWLEDGE AND BELIEF.



  
THE EXCELSIOR GROUP, LLC

MATTHEW M FILUS, WISCONSIN REGISTERED LAND SURVEYOR S-2185



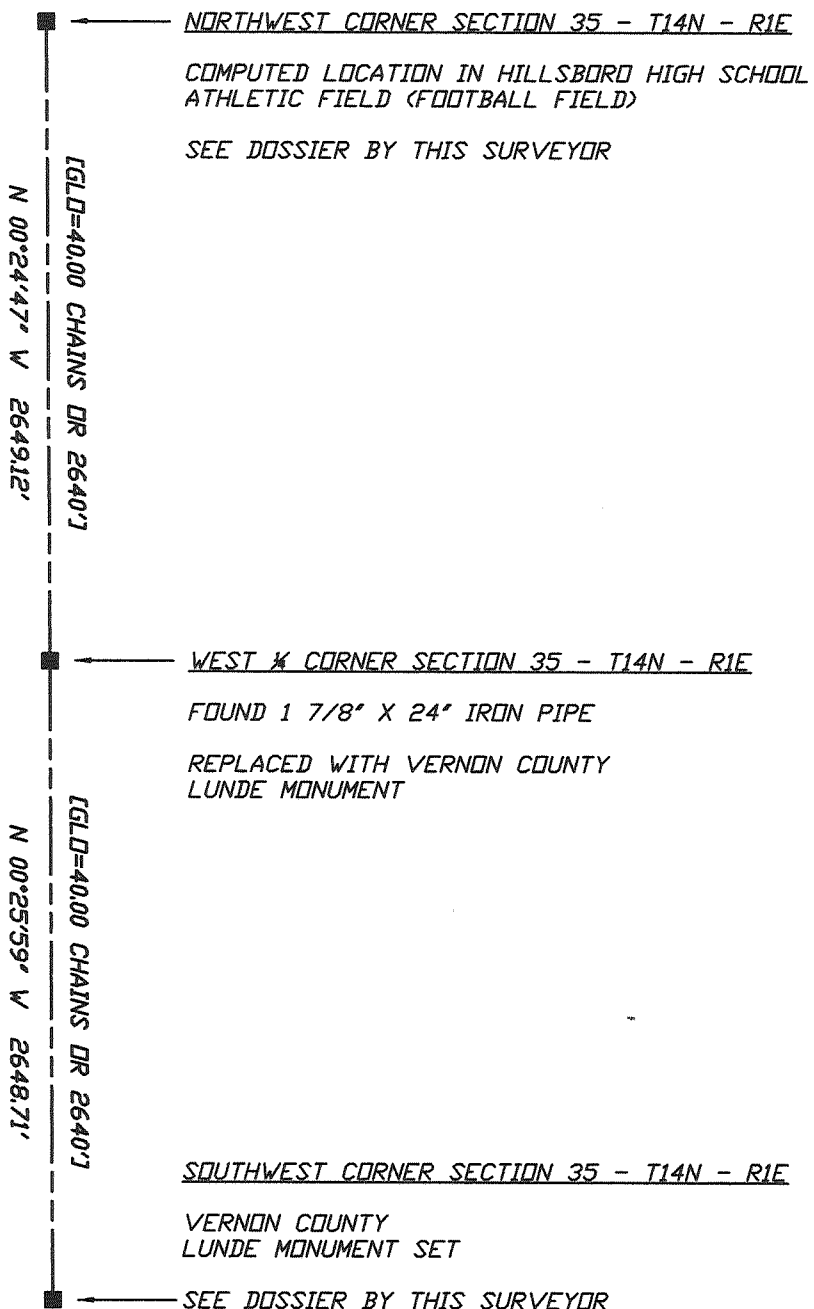
DATE CERTIFIED

# U.S. PUBLIC LAND SURVEY MONUMENT RECORD VERNON COUNTY, WISCONSIN.

IN ACCORDANCE WITH WISCONSIN ADMINISTRATIVE CODE, CHAPTER A-E 7.08 (3) (A) - (I)

## ADJACENT PLSS CORNER LOCATIONS:

(H) THE DIRECTIONS AND DISTANCES TO OTHER PUBLIC LAND SURVEY CORNERS WHICH WERE USED AS EVIDENCE OR USED FOR PROPORTIONING IN DETERMINING THE CORNER LOCATION;



NOT TO SCALE  
UNLESS NOTED, BEARINGS ARE GRID

## SURVEYOR'S CERTIFICATE: CHAPTER 7.08 (3) (I)

THE UNDERSIGNED HEREBY CERTIFIES THAT THE U.S. PUBLIC LAND SURVEY MONUMENT RECORD SHOWN WAS DETERMINED BY THEM OR UNDER THEIR DIRECTION AND IS CORRECT TO THE BEST OF THEIR KNOWLEDGE AND BELIEF.



*Matthew M. Filus*  
 THE EXCELSIOR GROUP, LLC

9/1/2011  
 DATE CERTIFIED

MATTHEW M FILUS, WISCONSIN REGISTERED LAND SURVEYOR S-2185

# VERNON COUNTY COORDINATE FORM

"AS AN ADDENDUM TO"

A CERTIFIED U.S. PUBLIC LAND SURVEY MONUMENT RECORD

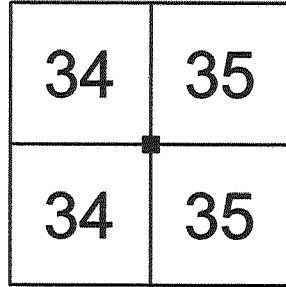
LOCATION: (A) THE IDENTITY OF THE CORNER, AS REFERENCED TO THE U.S. PUBLIC LAND SURVEY SYSTEM.

SECTION 35 - TOWN 14 N - RANGE 1 E

TOWNSHIP OF HILLSBORO (CITY)

TYPE OF CORNER WEST ONE-QUARTER CORNER

TYPE OF MONUMENT VERNON COUNTY LUNDE MONUMENT SET



COORDINATES: (B)

GEOGRAPHIC (DEGREES, MINUTES AND DECIMAL SECONDS TO 4 PLACES)

LATITUDE 43° 38' 51.04398" N

LONGITUDE 90° 21' 08.93215" W

ELLIPSOID HT (M) N/A

HORIZONTAL DATUM WISCRS - VERNON COUNTY - NAD83 (2007)

ORTHOMETRIC HT (US FT) N/A

VERTICAL DATUM N/A

VERNON COUNTY COORDINATES (US FT)                      COORDINATE QUALITY

NORTHING 182,661.284    ± 0.02'

EASTING 844,049.093    ± 0.02'

METHOD USED TO COMPUTE COORDINATES (CHECK AND COMPLETE AS APPLICABLE)

RTK OBSERVATIONS    STATIC BASELINES    OPUS SOLUTION (ATTACH COPY OF OPUS REPORT)

COMBINATION OF CONVENTIONAL PROCEDURES WITH GPS OBSERVATIONS TO SET TEMPORARY CONTROL

WAS A LEAST SQUARES ADJUSTMENT USED TO COMPUTE COORDINATES?

FOR NON-OPUS SOLUTIONS, LIST THE CONTROL STATIONS USED FOR COORDINATE COMPUTATIONS (A MINIMUM OF 2 DIFFERENT CONTROL STATIONS OR 2 DIFFERENT TIME COMBINATIONS FROM THE SAME CONTROL STATION ARE REQUIRED):

WHEN A DIRECT OBSERVATION OF THE CORNER IS NOT POSSIBLE, AND A COMBINATION OF DIFFERENT GPS AND/OR CONVENTIONAL PROCEDURES MUST BE USED TO DETERMINE COORDINATE VALUES, PROVIDE A BRIEF DESCRIPTION OF YOUR PROCEDURES ON THE BACK OF THIS FORM.

\*\* THIS CORNER MONUMENT WAS POSITIONED THROUGH A NETWORK OF BOTH GPS AND CONVENTIONAL OBSERVATIONS REFER TO SHEET 5 OF 5 FOR THE CONSTRAINED CONTROL STATIONS, OBSERVATION TIMES AND ADJUSTMENT RESULTS

REASON FOR SUBMITTAL: (C) (CHECK ONE)

BEING FILED WITH A NEW US PLSS MONUMENT RECORD

TO CORRECT THE COORDINATES LISTED ON A PREVIOUSLY FILED PLSS MONUMENT RECORD

TO PROVIDE COORDINATES FOR A PREVIOUSLY FILED PLSS MONUMENT RECORD WITHOUT COORDINATES

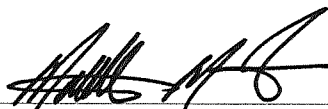
TO PROVIDE SUPPLEMENTAL COORDINATES FOR A PREVIOUSLY FILED PLSS MONUMENT RECORD

RLS AND DATE OF PLSS MONUMENT RECORD \_\_\_\_\_

SURVEYOR'S CERTIFICATE: (D) AGENT(S) PERFORMING GPS OBSERVATION & COORDINATE COMPUTATION

I, MATTHEW M FILUS, WISCONSIN REGISTERED LAND SURVEYOR NUMBER 2185, HEREBY CERTIFY THAT THE COORDINATES PROVIDED ON THIS RECORD WERE DETERMINED BY ME OR UNDER MY DIRECTION AND CONTROL AND THAT THIS COORDINATE SUBMISSION FORM IS CORRECT AND COMPLETE TO THE BEST OF MY KNOWLEDGE AND BELIEF.



  
THE EXCELSIOR GROUP, LLC  
MATTHEW M FILUS, WISCONSIN REGISTERED LAND SURVEYOR S-2185

9/1/2011

DATE CERTIFIED

# VERNON COUNTY COORDINATE FORM

## "AS AN ADDENDUM TO"

### A CERTIFIED U.S. PUBLIC LAND SURVEY MONUMENT RECORD

#### CONTROL STATIONS, OBSERVATION TIMES & ADJUSTMENT RESULTS:

HORIZONTAL ADJUSTMENT REPORT

Unadjusted Observations

Control Coordinates:	6 Observed Points,	0 Fixed Points,	0 Approx. Points	
Sta.	N:	E:	StErr N:	StErr E:
1000	182796.837	843869.681	0.026	0.023
1001	182811.421	844230.838	0.026	0.025
DILLY	182094.130	817853.323	0.000	0.000
GREENWOOD	180380.777	842706.521	0.000	0.000
HILLS	195721.217	837995.861	0.000	0.000
WONEWOC	194112.130	861156.707	0.000	0.000

Distances:			
From Sta.	To Sta.	Dist.	StErr
13	1000	224.85	0.01
13	1001	235.72	0.02

Angles:				
BS Sta.	Occ. Sta.	FS Sta.	Angle	StErr (Sec.)
1000	13	1001	103-21'47"	17

Adjusted Coordinates

Adjusted Local Coordinates				
Sta.	N:	E:	StErr N:	StErr E:
1000	182796.838	843869.691	0.020	0.015
1001	182811.420	844230.826	0.020	0.015
DILLY	182094.130	817853.323	0.000	0.000
GREENWOOD	180380.777	842706.521	0.000	0.000
HILLS	195721.217	837995.861	0.000	0.000
WONEWOC	194112.130	861156.707	0.000	0.000
13	182661.284	844049.093	0.016	0.020

Adjusted Coordinates Error Ellipses, 68% CI			
Sta.	Semi Major Axis	Semi Minor Axis	Max. Error Az.
1000	0.060	0.043	S 01-37'18"E
1001	0.060	0.045	S 02-04'36"E
DILLY	0.000	0.000	N 00-00'00"E
GREENWOOD	0.000	0.000	N 00-00'00"E
HILLS	0.000	0.000	N 00-00'00"E
WONEWOC	0.000	0.000	N 00-00'00"E
13	0.060	0.048	N 89-58'14"E

Relative 1:20,000 Error and Specification Tolerances

Sta.	Sta.	Dist.	Actual Semi Major	Allowable Semi Major	Ratio Actual/Allowable	Semi Minor	Max. Err. Az.
13	DILLY	26201.91	0.06	1.31	0.05	0.05	N 89-58'14"E
13	GREENWOOD	2646.36	0.06	0.13	0.45	0.05	N 89-58'14"E
13	HILLS	14394.56	0.06	0.72	0.08	0.05	N 89-58'14"E
13	WONEWOC	20586.22	0.06	1.03	0.06	0.05	N 89-58'14"E

Adjusted Observations

Adjusted Distances					
From Sta.	To Sta.	Distance	Residual	StdRes.	StdDev
13	1000	224.85	0.00	0.2	0.01
13	1001	235.73	0.00	0.2	0.01
	Root Mean Square (RMS)		0.00		

Adjusted Angles						
BS Sta.	Occ. Sta.	FS Sta.	Angle	Residual	StdRes	StdDev (Sec.)
1000	13	1001	103-21'51"	04	0.2	13
			Root Mean Square (RMS)	02		

**SURVEYOR'S CERTIFICATE: (D) AGENT(S) PERFORMING GPS OBSERVATION & COORDINATE COMPUTATION**

I, MATTHEW M FILUS, WISCONSIN REGISTERED LAND SURVEYOR NUMBER 2185, HEREBY CERTIFY THAT THE COORDINATES PROVIDED ON THIS RECORD WERE DETERMINED BY ME OR UNDER MY DIRECTION AND CONTROL AND THAT THIS COORDINATE SUBMISSION FORM IS CORRECT AND COMPLETE TO THE BEST OF MY KNOWLEDGE AND BELIEF.



*Matthew M. Filus*

*9/1/2011*

THE EXCELSIOR GROUP, LLC  
MATTHEW M FILUS, WISCONSIN REGISTERED LAND SURVEYOR S-2185

DATE CERTIFIED