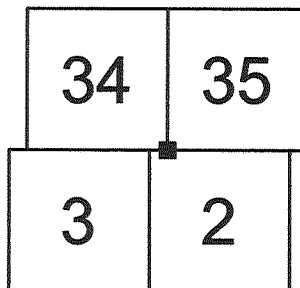


U.S. PUBLIC LAND SURVEY MONUMENT RECORD VERNON COUNTY, WISCONSIN.

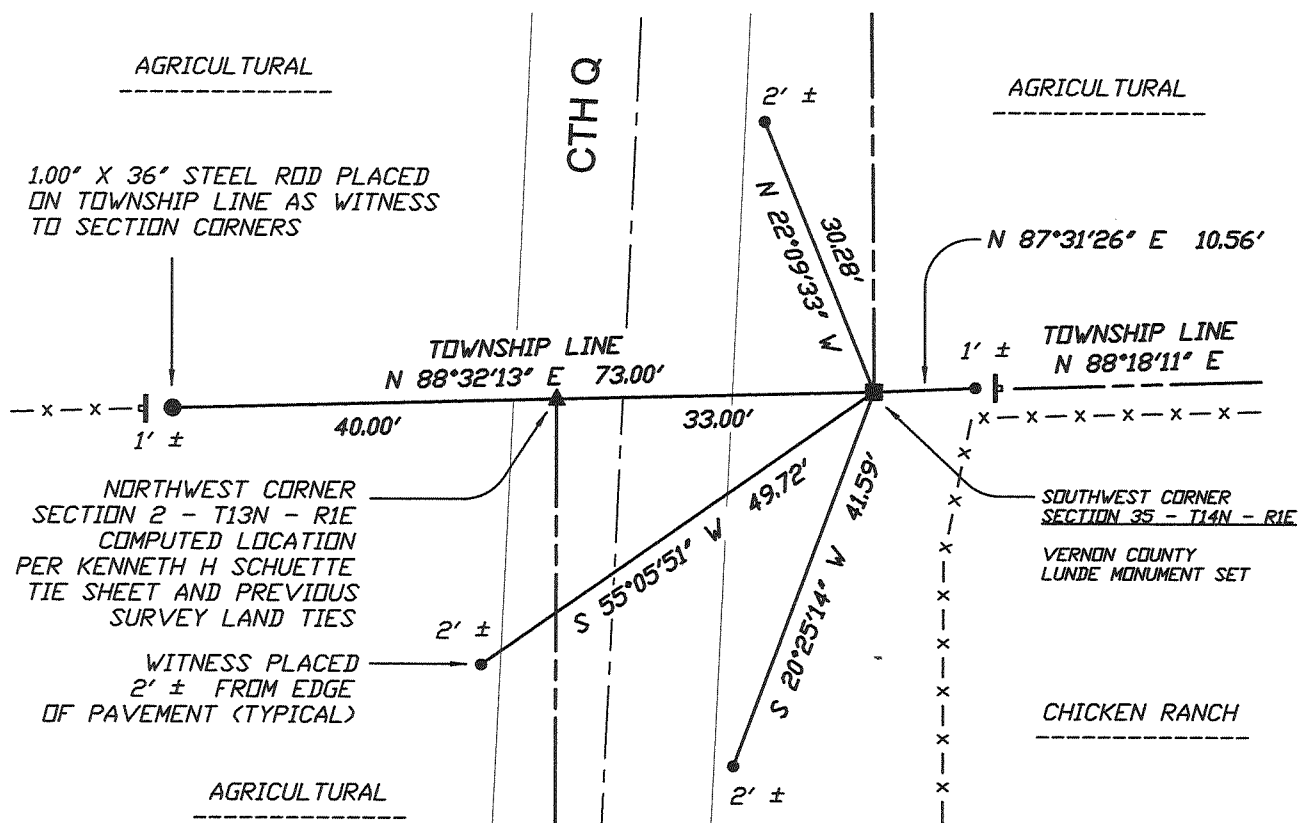
IN ACCORDANCE WITH WISCONSIN ADMINISTRATIVE CODE, CHAPTER A-E 7.08 (3) (A) - (I)

LOCATION: (A) THE IDENTITY OF THE CORNER, AS REFERENCED TO THE U.S. PUBLIC LAND SURVEY SYSTEM.

SECTION 35 - TOWN 14 N - RANGE 1 E
 TOWNSHIP OF HILLSBORO
 TYPE OF CORNER SOUTHWEST CORNER (STANDARD)
 TYPE OF MONUMENT VERNON COUNTY LUNDE MONUMENT SET



PLAN VIEW: (C) REFERENCE TO AT LEAST 4 WITNESS MONUMENTS. WITNESS MONUMENTS SHALL BE CONCRETE, NATURAL STONE, IRON, BEARING TREES OR OTHER EQUALLY DURABLE MATERIAL, EXCEPT WOOD OTHER THAN BEARING TREES; (D) A PLAN VIEW DEPICTING THE RELEVANT MONUMENTS AND REFERENCE TIES WHICH ARE SUFFICIENT IN DETAIL TO ENABLE ACCURATE RELOCATION OF THE CORNER MONUMENT IF THE CORNER MONUMENT IS DISTURBED; (E) A DESCRIPTION OF ANY MATERIAL DISCREPANCY BETWEEN THE LOCATION OF THE CORNER AS RESTORED OR REESTABLISHED AND THE LOCATION OF THAT CORNER AS PREVIOUSLY RESTORED OR REESTABLISHED;



LEGEND

- PUBLIC LAND SURVEYING SYSTEM CORNER MONUMENT DESCRIBED
- 0.75" x 24" RE-BAR PLACED AS REFERENCE MONUMENT
- EXISTING FERROUS PIPE FOUND (SIZE AS NOTED)
- EXISTING FERROUS ROD FOUND (SIZE AS NOTED)
- ‡ COUNTY SURVEYOR WITNESS SIGN ON STEEL CHANNEL POST PLACED

SCALE: 1" = 20 FEET

** OTHER REFERENCES AND FEATURES ARE AS NOTED IN THE PLAN VIEW ABOVE

UNLESS NOTED, BEARINGS ARE GRID

SURVEYOR'S CERTIFICATE: CHAPTER 7.08 (3) (I)

THE UNDERSIGNED HEREBY CERTIFIES THAT THE U.S. PUBLIC LAND SURVEY MONUMENT RECORD SHOWN WAS DETERMINED BY THEM OR UNDER THEIR DIRECTION AND IS CORRECT TO THE BEST OF THEIR KNOWLEDGE AND BELIEF.



Matthew M. Filus
 THE EXCELSIOR GROUP, LLC
 MATTHEW M FILUS, WISCONSIN REGISTERED LAND SURVEYOR S-2185

9/1/2011

DATE CERTIFIED

U.S. PUBLIC LAND SURVEY MONUMENT RECORD VERNON COUNTY, WISCONSIN.

IN ACCORDANCE WITH WISCONSIN ADMINISTRATIVE CODE, CHAPTER A-E 7.08 (3) (A) - (I)

RECOVERY PROCEDURES:

(B) A DESCRIPTION OF ANY RECORD EVIDENCE, MONUMENT EVIDENCE, OCCUPATIONAL EVIDENCE, TESTIMONIAL EVIDENCE OR ANY OTHER MATERIAL EVIDENCE CONSIDERED BY THE SURVEYOR, AND WHETHER THE MONUMENT WAS FOUND OR PLACED;

GOVERNMENT LAND OFFICE (GLO) ORIGINAL SURVEY
MARCH 1845, J.E. WHITCHER, SURVEYOR

WEST RANDOM ON SOUTH SIDE TOWN 14 NORTH RANGE 1 EAST

6M 3CH 23 LKS INTERSECT 4TH MERIDIAN 11.58 N

EAST CORRECTED SOUTH SIDE SECTIONS 34, VARIATION 10°28' E

80.00 SET POST CORNER TO SECTIONS 34 & 35
BURR OAK 12, N 39° W, 19 LINKS (12.54')
BURR OAK 9, N 53° E, 45 LINKS (29.70')

VOLUME 1 - PAGE 305 SURVEYOR RECORDS, SEPTEMBER 6TH, 1887, W.H. KNOWER COUNTY SURVEYOR

IN THIS RECORD, W.H. KNOWER SUBDIVIDES SECTION 2, NOTING THIS CORNER AS WELL AS THE CLOSING NORTHWEST CORNER SECTION 2, BUT DOES NOT GIVE A DESCRIPTION OR REFERENCE TO EITHER CORNER.

VOLUME 1 - PAGE 356 SURVEYOR RECORDS, DECEMBER 16TH-21ST, 1889, W.H. KNOWER COUNTY SURVEYOR

IN THIS RECORD, W.H. KNOWER SUBDIVIDES SECTION 34, NOTING THIS CORNER AS "GOVERNMENT". A BEARING TREE IS NOTED AS A BURR OAK 6" IN DIAMETER BEARING S 4½° W, 261 LINKS (172.26').

THE EXCELSIOR GROUP, LLC, AUGUST, 2011, MATTHEW M FILUS, SURVEYOR

DUE TO THE CONSTRUCTION OF CTH Q (FORMER STH 80), I HAVE FOUND THAT NO EVIDENCE OR ACCESSORIES OF EITHER THE ORIGINAL GLO CORNER NOR KNOWER'S CORNER REMAINS.

KENNETH H SCHUETTE ESTABLISHED THE CLOSING NORTHWEST CORNER OF SECTION 2 BY EXTENDING THE WEST LINE OF SECTION 2 NORTHERLY TO THE EXISTING FENCE LINE RUNNING ALONG THE TOWNSHIP LINE. I HAVE FOUND THIS CORNER TO BE THE ONLY REMAINING LOCAL EVIDENCE AS TO THE LOCATION OF THIS CORNER.

I ESTABLISHED THIS CORNER BY PROJECTING THE TOWNSHIP LINE FROM THE SOUTH ¼ CORNER OF SECTION 34 THROUGH THE CLOSING NORTHWEST CORNER OF SECTION 2 A DISTANCE OF 50 LINKS OR 33.00 FEET. THIS DISTANCE IS THE PROTRACTED DISTANCE FROM THE GLO PLAT AS WELL AS THE DISTANCE USED BY KNOWER IN VOLUME 1 - PAGE 305 OF THE SURVEY RECORDS.

I HAVE PLACED A VERNON COUNTY LUNDE MONUMENT AT THIS LOCATION, WITNESSED AS SHOWN ON SHEET 1 AND POSITIONED AS SHOWN ON SHEETS 4 AND 5 OF THIS DOCUMENT.

(E) A DESCRIPTION OF ANY MATERIAL DISCREPANCY BETWEEN THE LOCATION OF THE CORNER AS RESTORED OR REESTABLISHED AND THE LOCATION OF THAT CORNER AS PREVIOUSLY RESTORED OR REESTABLISHED;

NONE

(F) WHETHER THE CORNER WAS RESTORED THROUGH ACCEPTANCE OF AN OBLITERATED EVIDENCE LOCATION OR A FOUND PERPETUATED LOCATION;

AN OBLITERATED EVIDENCE LOCATION

(G) WHETHER THE CORNER WAS REESTABLISHED THROUGH LOST-CORNER PROPORTIONATE METHODS;

YES

SURVEYOR'S CERTIFICATE: CHAPTER 7.08 (3) (I)

THE UNDERSIGNED HEREBY CERTIFIES THAT THE U.S. PUBLIC LAND SURVEY MONUMENT RECORD SHOWN WAS DETERMINED BY THEM OR UNDER THEIR DIRECTION AND IS CORRECT TO THE BEST OF THEIR KNOWLEDGE AND BELIEF.




THE EXCELSIOR GROUP, LLC
MATTHEW M FILUS, WISCONSIN REGISTERED LAND SURVEYOR S-2185



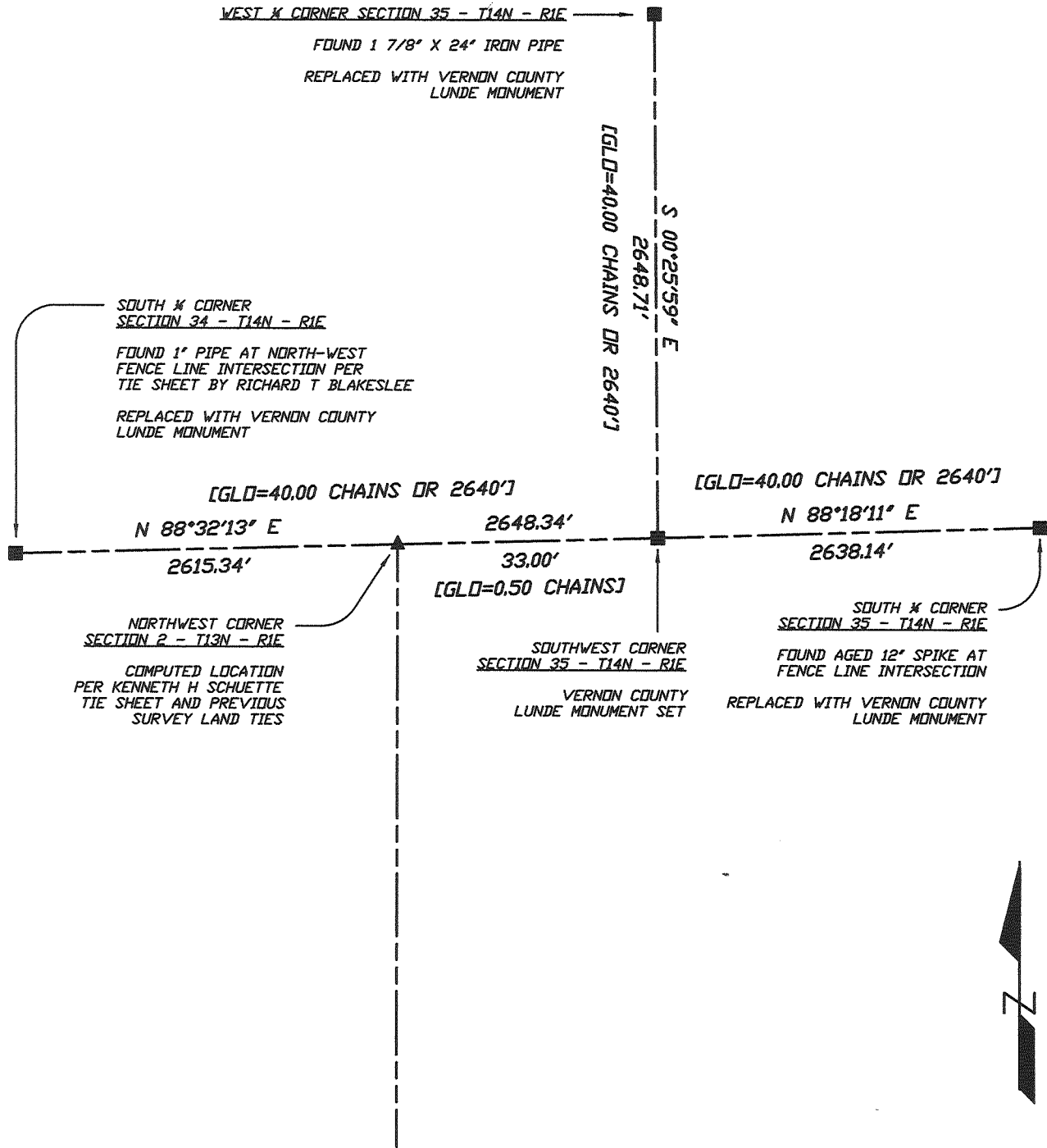
DATE CERTIFIED

U.S. PUBLIC LAND SURVEY MONUMENT RECORD VERNON COUNTY, WISCONSIN.

IN ACCORDANCE WITH WISCONSIN ADMINISTRATIVE CODE, CHAPTER A-E 7.08 (3) (A) - (I)

ADJACENT PLSS CORNER LOCATIONS:

(H) THE DIRECTIONS AND DISTANCES TO OTHER PUBLIC LAND SURVEY CORNERS WHICH WERE USED AS EVIDENCE OR USED FOR PROPORTIONING IN DETERMINING THE CORNER LOCATION;



NOT TO SCALE
UNLESS NOTED, BEARINGS ARE GRID

SURVEYOR'S CERTIFICATE: CHAPTER 7.08 (3) (I)

THE UNDERSIGNED HEREBY CERTIFIES THAT THE U.S. PUBLIC LAND SURVEY MONUMENT RECORD SHOWN WAS DETERMINED BY THEM OR UNDER THEIR DIRECTION AND IS CORRECT TO THE BEST OF THEIR KNOWLEDGE AND BELIEF.



Matthew M. Filus

THE EXCELSIOR GROUP, LLC
MATTHEW M FILUS, WISCONSIN REGISTERED LAND SURVEYOR S-2185

9/1/2011

DATE CERTIFIED

VERNON COUNTY COORDINATE FORM

"AS AN ADDENDUM TO"

A CERTIFIED U.S. PUBLIC LAND SURVEY MONUMENT RECORD

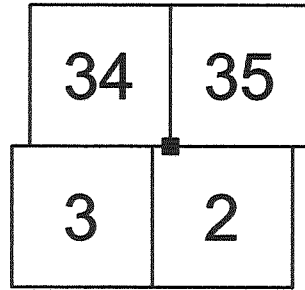
LOCATION: (A) THE IDENTITY OF THE CORNER, AS REFERENCED TO THE U.S. PUBLIC LAND SURVEY SYSTEM.

SECTION 35 - TOWN 14 N - RANGE 1 E

TOWNSHIP OF HILLSBORO

TYPE OF CORNER SOUTHWEST CORNER (STANDARD)

TYPE OF MONUMENT VERNON COUNTY LUNDE MONUMENT SET



COORDINATES: (B)

GEOGRAPHIC (DEGREES, MINUTES AND DECIMAL SECONDS TO 4 PLACES)

LATITUDE 43° 38' 24.88632" N

LONGITUDE 90° 21' 08.84666" W

ELLIPSOID HT (M) N/A

HORIZONTAL DATUM WISCRS - VERNON COUNTY - NAD83 (2007)

ORTHOMETRIC HT (US FT) N/A

VERTICAL DATUM N/A

VERNON COUNTY COORDINATES (US FT) COORDINATE QUALITY

NORTHING 180,012.648 ± 0.03'

EASTING 844,069.109 ± 0.04'

METHOD USED TO COMPUTE COORDINATES (CHECK AND COMPLETE AS APPLICABLE)

RTK OBSERVATIONS STATIC BASELINES OPUS SOLUTION (ATTACH COPY OF OPUS REPORT)

COMBINATION OF CONVENTIONAL PROCEDURES WITH GPS OBSERVATIONS TO SET TEMPORARY CONTROL

WAS A LEAST SQUARES ADJUSTMENT USED TO COMPUTE COORDINATES?

FOR NON-OPUS SOLUTIONS, LIST THE CONTROL STATIONS USED FOR COORDINATE COMPUTATIONS (A MINIMUM OF 2 DIFFERENT CONTROL STATIONS OR 2 DIFFERENT TIME COMBINATIONS FROM THE SAME CONTROL STATION ARE REQUIRED):

WHEN A DIRECT OBSERVATION OF THE CORNER IS NOT POSSIBLE, AND A COMBINATION OF DIFFERENT GPS AND/OR CONVENTIONAL PROCEDURES MUST BE USED TO DETERMINE COORDINATE VALUES, PROVIDE A BRIEF DESCRIPTION OF YOUR PROCEDURES ON THE BACK OF THIS FORM.

** THIS CORNER MONUMENT WAS POSITIONED THROUGH A NETWORK OF BOTH GPS AND CONVENTIONAL OBSERVATIONS REFER TO SHEET 5 OF 5 FOR THE CONSTRAINED CONTROL STATIONS, OBSERVATION TIMES AND ADJUSTMENT RESULTS

REASON FOR SUBMITTAL: (C) (CHECK ONE)

BEING FILED WITH A NEW US PLSS MONUMENT RECORD

TO CORRECT THE COORDINATES LISTED ON A PREVIOUSLY FILED PLSS MONUMENT RECORD

TO PROVIDE COORDINATES FOR A PREVIOUSLY FILED PLSS MONUMENT RECORD WITHOUT COORDINATES

TO PROVIDE SUPPLEMENTAL COORDINATES FOR A PREVIOUSLY FILED PLSS MONUMENT RECORD

PLSS AND DATE OF PLSS MONUMENT RECORD _____

SURVEYOR'S CERTIFICATE: (D) AGENT(S) PERFORMING GPS OBSERVATION & COORDINATE COMPUTATION



I, MATTHEW M FILUS, WISCONSIN REGISTERED LAND SURVEYOR NUMBER 2185, HEREBY CERTIFY THAT THE COORDINATES PROVIDED ON THIS RECORD WERE DETERMINED BY ME OR UNDER MY DIRECTION AND CONTROL AND THAT THIS COORDINATE SUBMISSION FORM IS CORRECT AND COMPLETE TO THE BEST OF MY KNOWLEDGE AND BELIEF.

THE EXCELSIOR GROUP, LLC
MATTHEW M FILUS, WISCONSIN REGISTERED LAND SURVEYOR S-2185

9/1/2011

DATE CERTIFIED

VERNON COUNTY COORDINATE FORM

"AS AN ADDENDUM TO"

A CERTIFIED U.S. PUBLIC LAND SURVEY MONUMENT RECORD

CONTROL STATIONS, OBSERVATION TIMES & ADJUSTMENT RESULTS:

HORIZONTAL ADJUSTMENT REPORT

Unadjusted Observations

Control Coordinates:	6 Observed Points,	0 Fixed Points,	0 Approx. Points
Sta. N:	E:	StErr N:	StErr E:
1010	179987.632	844007.436	0.024
1011	179788.800	844009.880	0.027
DILLY	182094.130	817853.323	0.000
GREENWOOD	180380.777	842706.521	0.000
HILLS	195721.217	837995.861	0.000
WONEWOC	194112.130	861156.707	0.000

GPS OBSERVATION 8/6/2011 16:29-16:49
GPS OBSERVATION 8/6/2011 16:52-17:12

Distances:

From Sta.	To Sta.	Dist.	StErr
1010	1011	198.81	0.01
1010	14 SET	66.56	0.02

Angles:

BS Sta.	Occ. Sta.	FS Sta.	Angle	StErr (Sec.)
1011	1010	14 SET	248-36'53"	43

Adjusted Coordinates

Adjusted Local Coordinates

Sta. N:	E:	StErr N:	StErr E:
1010	179987.617	844007.436	0.020
1011	179788.820	844009.880	0.020
DILLY	182094.130	817853.323	0.000
GREENWOOD	180380.777	842706.521	0.000
HILLS	195721.217	837995.861	0.000
WONEWOC	194112.130	861156.707	0.000
14 SET	180012.647	844069.112	0.028

Adjusted Coordinates Error Ellipses, 50% CI

Sta.	Semi Major Axis	Semi Minor Axis	Max. Error Az.
1010	0.045	0.034	N 89-22'31"E
1011	0.052	0.035	N 89-23'02"E
DILLY	0.000	0.000	N 00-00'00"E
GREENWOOD	0.000	0.000	N 00-00'00"E
HILLS	0.000	0.000	N 00-00'00"E
WONEWOC	0.000	0.000	N 00-00'00"E
14 SET	0.062	0.045	S 66-56'43"E

Relative 1:20,000 Error and Specification Tolerances

Sta.	Sta.	Dist.	Actual Semi Major	Allowable Semi Major	Ratio Actual/Allowable	Semi Minor	Max. Err. Az.
14 SET	DILLY	26298.29	0.06	1.31	0.05	0.04	S 66-56'43"E
14 SET	GREENWOOD	1411.44	0.06	0.07	0.88	0.04	S 66-56'43"E
14 SET	HILLS	16841.72	0.06	0.84	0.07	0.04	S 66-56'43"E
14 SET	WONEWOC	22153.59	0.06	1.11	0.06	0.04	S 66-56'43"E

Adjusted Observations

Adjusted Distances

From Sta.	To Sta.	Distance	Residual	StdRes.	StdDev
1010	1011	198.81	0.01	0.4	0.01
1010	14 SET	66.56	-0.00	0.0	0.02
Root Mean Square (RMS)			0.00		

Adjusted Angles

BS Sta.	Occ. Sta.	FS Sta.	Angle	Residual	StdRes	StdDev (Sec.)
1011	1010	14 SET	248-36'53"	00	0.0	45
Root Mean Square (RMS)				00		

SURVEYOR'S CERTIFICATE: (D) AGENT(S) PERFORMING GPS OBSERVATION & COORDINATE COMPUTATION

I, MATTHEW M FILUS, WISCONSIN REGISTERED LAND SURVEYOR NUMBER 2185, HEREBY CERTIFY THAT THE COORDINATES PROVIDED ON THIS RECORD WERE DETERMINED BY ME OR UNDER MY DIRECTION AND CONTROL AND THAT THIS COORDINATE SUBMISSION FORM IS CORRECT AND COMPLETE TO THE BEST OF MY KNOWLEDGE AND BELIEF.



[Signature]

9/1/2011

THE EXCELSIOR GROUP, LLC
MATTHEW M FILUS, WISCONSIN REGISTERED LAND SURVEYOR S-2185

DATE CERTIFIED