

# VERNON COUNTY CERTIFIED U.S. PUBLIC LAND SURVEY MONUMENT RECORD

INSTRUCTIONS: THIS RECORD SHALL SHOW THE LOCATION OF THE CORNER AND SHALL INCLUDE ALL OF THE FOLLOWING ELEMENTS (A-I)

(A) IDENTIFY THE CORNER BY REFERENCE TO THE U.S. PUBLIC LAND SURVEY SYSTEM

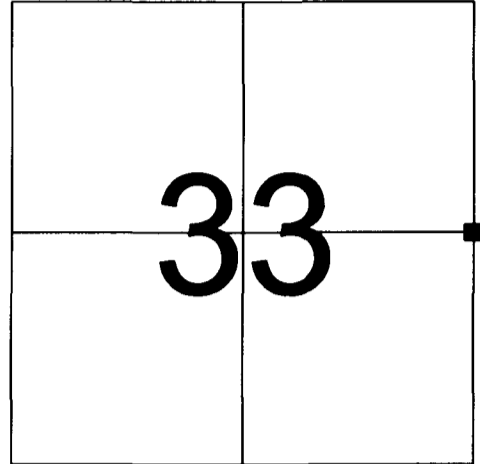
■ = CORNER MONUMENT RESTORED

WITNESSES TO CORNER LOCATION:

- 1) RICHARD BLAKESLEE
- 2) JOSH MURPHY

VERNON COUNTY COORDINATES

NORTHING: 1080.63  
EASTING: 838,700.57



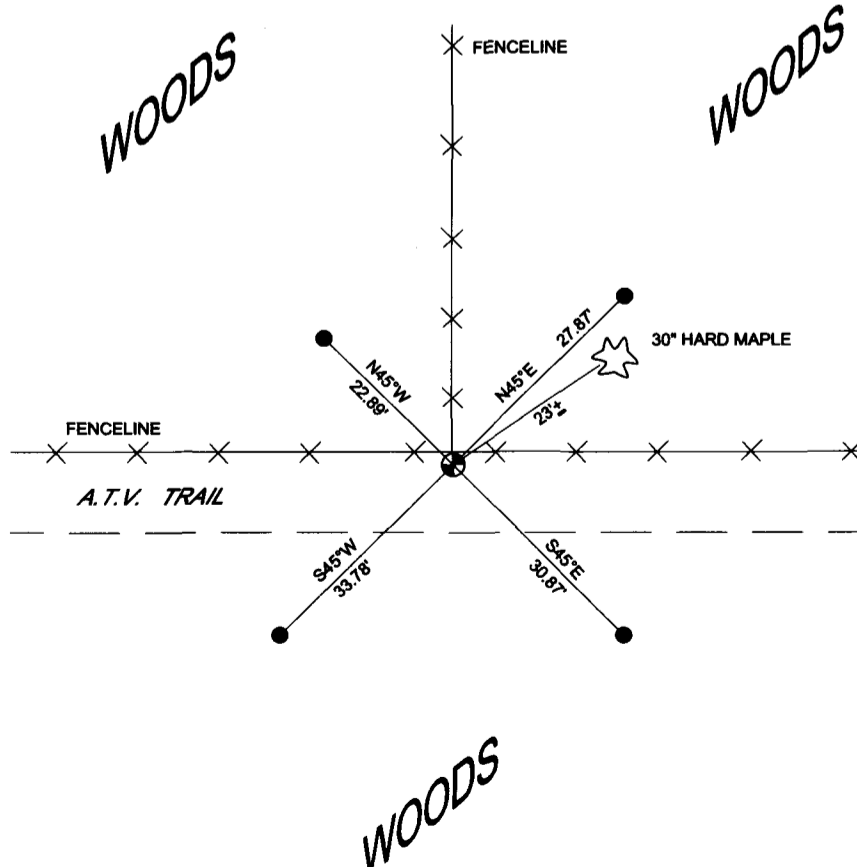
SECTION 33, TOWN 14 NORTH, RANGE 1 EAST

(B) DESCRIBE ANY RECORD EVIDENCE, MONUMENT EVIDENCE, OCCUPATIONAL EVIDENCE, TESTIMONIAL EVIDENCE OR ANY OTHER MATERIAL EVIDENCE YOU CONSIDERED, AND WHETHER THE MONUMENT WAS FOUND OR PLACED.

THE ORIGINAL CORNER WAS SET BY J.E. DAVIDSON IN 1852. WE RESEARCHED VERNON COUNTY SURVEY RECORDS VOLUMES 1 AND 2 AND FOUND A SURVEY DONE IN SECTION 34, T14N, R1E DONE IN 1889, (SEE VOL. 1, PG. 376) WHICH INDICATED THE ORIGINAL GOVERNMENT POSITION OF THE EAST 1/4 CORNER OF SECTION 33 TO BE FOUND. WE FOUND A 3/4" RE-BAR SET BY PATRICK CARROL AT THE LOCATION OF THE OCCUPIED FENCE CORNER. WE EXCEPTED THE LOCATION OF THE FOUND RE-BAR TO BE THE BEST KNOWN EVIDENCE OF THE LOCATION OF THE CORNER AS FOUND IN THE 1889 SURVEY. WE SET NEW RE-BAR TIES AND ESTABLISHED VERNON COUNTY COORDINATES ON IT.

(C) IN THE PLAN VIEW DRAWING BELOW, PROVIDE REFERENCE TIES TO AT LEAST 4 WITNESS MONUMENTS OR, IF THE LOCATION IS WITHIN A MUNICIPALITY, TO AT LEAST 2 WITNESS MONUMENTS. (WITNESS MONUMENTS SHALL BE MADE OF CONCRETE, NATURAL STONE, IRON, OR OTHER EQUALLY DURABLE MATERIAL.) DESCRIBE WITNESS MONUMENTS.

(D) SHOW A PLAN VIEW DRAWING, DEPICTING THE RELEVANT MONUMENTS AND REFERENCE TIES, WHICH IS SUFFICIENTLY DETAILED TO ENABLE ACCURATE RELOCATION OF THE CORNER



### LEGEND

- 3/4" X 24" REBAR SET WEIGHING 1.50 LBS./LIN. FT.
- ⊙ 1 1/4" X 30" SOLID IRON ROD SET

(E) DESCRIBE ANY MATERIAL DISCREPANCY BETWEEN THE LOCATION OF THE CORNER AS RESTORED OR REESTABLISHED AND THE LOCATION OF THAT CORNER AS PREVIOUSLY RESTORED OR REESTABLISHED BY DISTANCE AND DIRECTION. SHOW THE DISCREPANCY ON THE PLAN VIEW DRAWING UNDER (D), ABOVE. SHOW THE DISTANCES BETWEEN THE CORNER AS PREVIOUSLY RESTORED OR REESTABLISHED AND (1) THE CORNER AS RESTORED OR REESTABLISHED, AND (2) TO AT LEAST 2 OF THE WITNESS MONUMENTS AS SHOWN ON THE DRAWING IN (D), ABOVE.

NONE

(F) WAS THE CORNER RESTORED THROUGH ACCEPTANCE OF (1) AN OBLITERATED EVIDENCE LOCATION, OR (2) A FOUND PERPETUATED LOCATION?

OLD FENCE CORNER USED TO PERPETUATE ORIGINAL CORNER'S LOCATION.

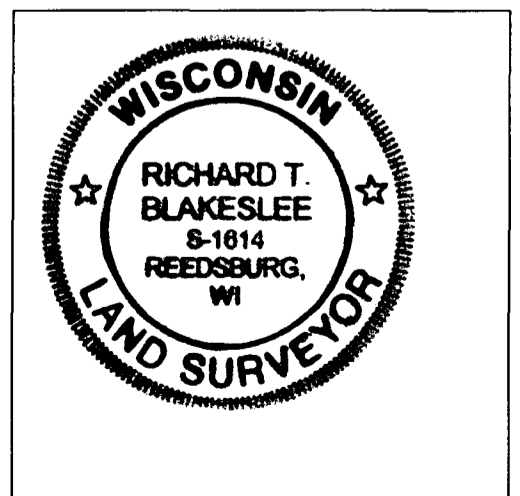
(G & H) WAS THE CORNER REESTABLISHED THROUGH LOST CORNER PROPORTIONATE METHODS? IF SO SHOW THE METHOD, INCLUDING THE DIRECTIONS AND DISTANCES TO OTHER PUBLIC LAND SURVEY CORNERS USED AS EVIDENCE OR USED FOR PROPORTIONING IN DETERMINING THE CORNER LOCATION.

NO

AFFIX LAND SURVEYOR SEAL

(I) I, RICHARD T. BLAKESLEE CERTIFY THAT THE LOCATION SHOWN ON THIS RECORD WAS DETERMINED BY ME OR UNDER MY DIRECTION AND CONTROL AND THAT THIS U.S. PUBLIC LAND SURVEY MONUMENT RECORD IS CORRECT AND COMPLETE TO THE BEST OF MY KNOWLEDGE AND BELIEF.

*Richard T. Blakeslee* 7/28/08  
SIGNATURE DATE

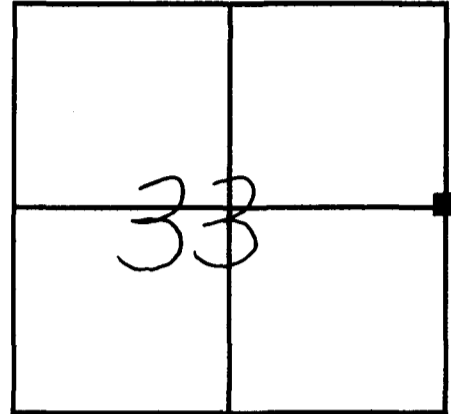


**VERNON COUNTY COORDINATE SUBMISSION FORM**  
**"As An Addendum To"**  
**VERNON COUNTY**  
**CERTIFIED U.S. PUBLIC LAND SURVEY MONUMENT RECORD**

INSTRUCTIONS: THIS RECORD FORM SHOULD BE USED WHEN COORDINATES ARE PROVIDED FOR A PUBLIC LAND SURVEY CORNER AND SHALL INCLUDE ALL OF THE FOLLOWING ELEMENTS (A-D)

(A) IDENTIFY THE CORNER BY REFERENCE TO THE U.S. PUBLIC LAND SURVEY SYSTEM IN DIAGRAM AT RIGHT

■ = CORNER MONUMENT



T 14 N, R 1 E ~~XX~~

(B) COORDINATES:

GEOGRAPHIC (Degrees Minutes Seconds):

LATITUDE: \_\_\_\_\_

LONGITUDE: \_\_\_\_\_

ELLIPSOID HT (m): \_\_\_\_\_

HORIZONTAL DATUM: \_\_\_\_\_

ORTHOMETRIC HT (U.S. ft): \_\_\_\_\_

VERTICAL DATUM: \_\_\_\_\_

VERNON COUNTY (U.S. FEET)

NORTHING (Y): 182,480.63

EASTING (X): 838,786.57

Coord. Quality (+/-)

0.10'

0.10'

GPS METHOD USED TO COMPUTE COORDINATES (check as applicable):

RTK                       single observation     averaged observations  
 Static Baseline         single baseline         averaged baselines        .03' OPUS Solution

BASE CONTROL USED FOR COORDINATE COMPUTATION:

Station Name	Station Coordinates (Lat/Long)
<u>Greenwood N GPS</u>	<u>43 38 28.59107 090 21 27.35009</u>
<u>Dilly GPS</u>	<u>43 38 46.62992 090 27 05.22154</u>

\* Please List Additional Control Stations Used on Back of Form

Was a Least Squares Adjustment Used to Compute Coordinate? ~~Yes~~/ No

Date(s) of GPS Observations: ~~06-06-08~~ 07-21-08

(C) REASON FOR COORDINATE SUBMITTAL (check one):

- Being Filed With a New U.S. PLS Monument Record  
 To Correct the Coordinates Listed on a Previously Filed PLS Monument Record  
 To Provide Coordinates for a Previously Filed PLS Monument Record without Coordinates  
 To Provide Supplemental Coordinates for a Previously Filed PLS Monument Record

MOST RECENT PLS MONUMENT RECORD DATE: \_\_\_\_ / \_\_\_\_ / \_\_\_\_

R.L.S. WHO CREATED MOST RECENT PLS MONUMENT RECORD: \_\_\_\_\_

(D) AGENT(S) PERFORMING GPS OBSERVATIONS & COORDINATE COMPUTATION

1) Josh Murphy

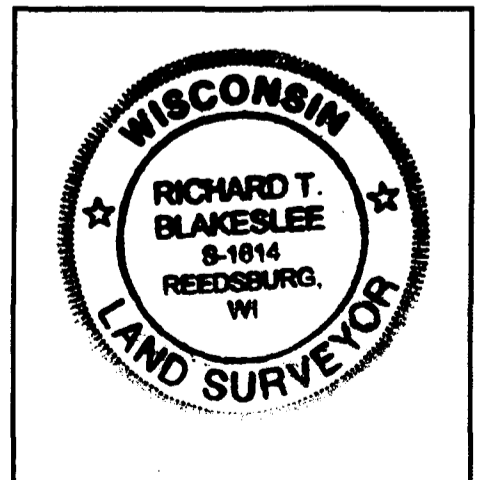
2) Richard Blakeslee

I, Richard Blakeslee

CERTIFY THAT THE COORDINATES PROVIDED ON THIS RECORD WERE DETERMINED BY ME OR UNDER MY DIRECTION AND CONTROL AND THAT THIS COORDINATE SUBMISSION FORM IS CORRECT AND COMPLETE TO THE BEST OF MY KNOWLEDGE AND BELIEF.

Richard T. Blakeslee                      7/25/08  
SIGNATURE    DATE

Seal



\* Please Provide Any Additional Notes/Information on Back of Form