

VERNON COUNTY CERTIFIED U.S. PUBLIC LAND SURVEY MONUMENT RECORD

INSTRUCTIONS: THIS RECORD SHALL SHOW THE LOCATION OF THE CORNER AND SHALL INCLUDE ALL OF THE FOLLOWING ELEMENTS (A-I)

(A) IDENTIFY THE CORNER BY REFERENCE TO THE U.S. PUBLIC LAND SURVEY SYSTEM

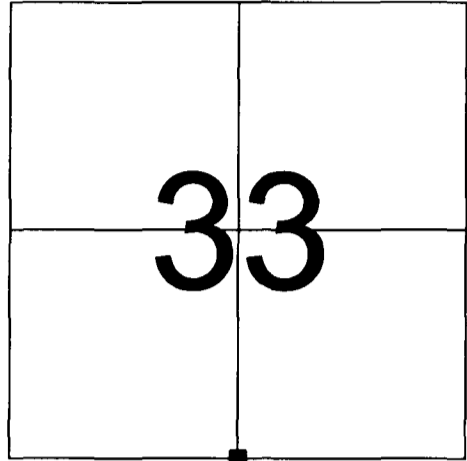
■ = CORNER MONUMENT RESTORED

WITNESSES TO CORNER LOCATION:

- 1) RICHARD BLAKESLEE
- 2) JOSH MURPHY

VERNON COUNTY COORDINATES

NORTHING: 17,574.5
EASTING: 836,135.972



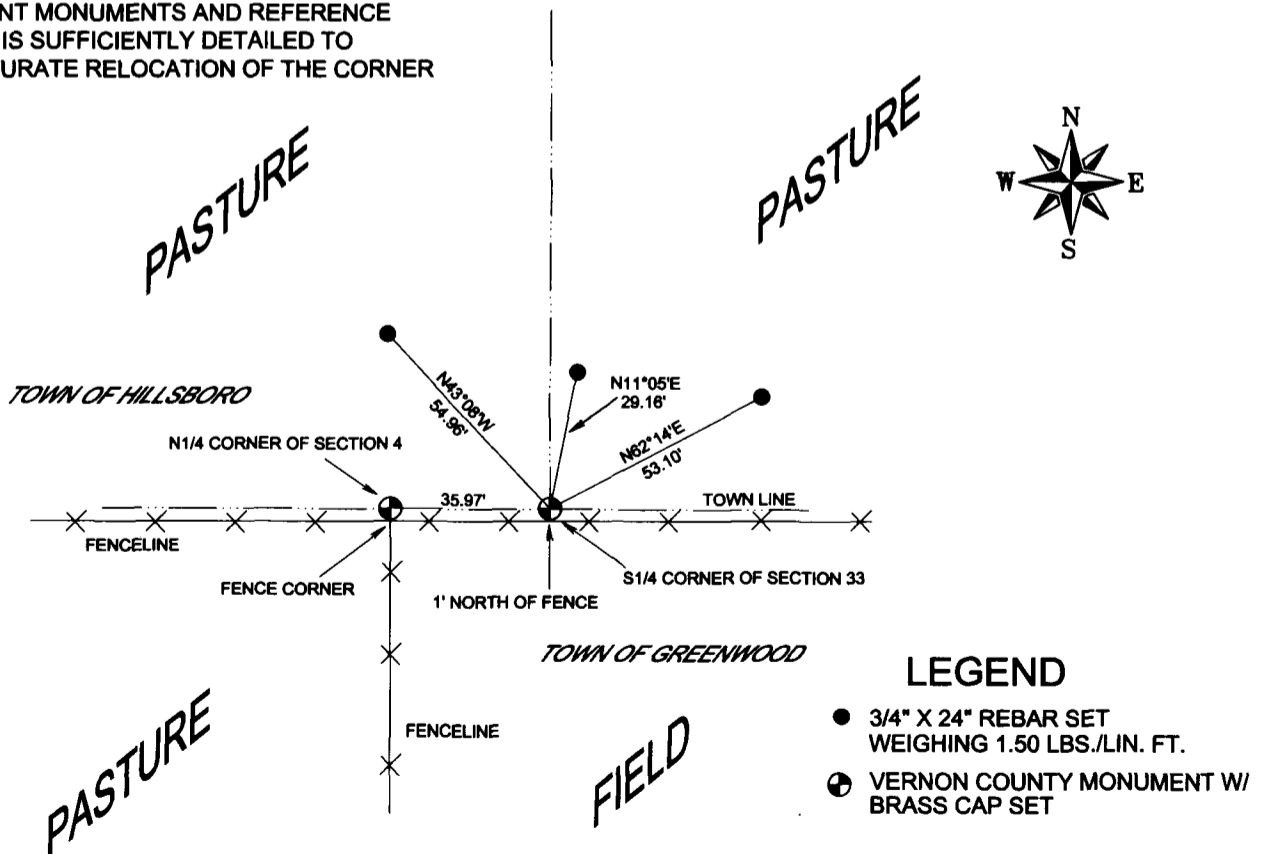
SECTION 33, TOWN 14 NORTH, RANGE 1 EAST

(B) DESCRIBE ANY RECORD EVIDENCE, MONUMENT EVIDENCE, OCCUPATIONAL EVIDENCE, TESTIMONIAL EVIDENCE OR ANY OTHER MATERIAL EVIDENCE YOU CONSIDERED, AND WHETHER THE MONUMENT WAS FOUND OR PLACED.

THE ORIGINAL CORNER WAS SET BY WILLIAM BURT IN 1845. WE RESEARCHED VERNON COUNTY SURVEY RECORDS VOLUMES 1 AND 2 AND FOUND A SURVEY DONE IN SECTION 4, T13N, R1E DONE IN 1892, (SEE VOL. 1, PG. 403) WHICH INDICATED THE POSITION OF THE NORTH 1/4 CORNER OF SECTION 4 TO BE ESTABLISHED. WE EXCEPTED THE LOCATION OF THE OCCUPIED FENCE CORNER LOCATED AT THE NORTH 1/4 CORNER OF SECTION 4 T13N, R1E AS BEING THE BEST EVIDENCE OF THAT CORNER'S LOCATION. WE ESTABLISHED THE SOUTH 1/4 CORNER OF SECTION 33, T14N, R1E, EASTERLY, 35.97' ON THE TOWN LINE. WE SET RE-BAR TIES AND ESTABLISHED VERNON COUNTY COORDINATES ON THE MONUMENT.

(C) IN THE PLAN VIEW DRAWING BELOW, PROVIDE REFERENCE TIES TO AT LEAST 4 WITNESS MONUMENTS OR, IF THE LOCATION IS WITHIN A MUNICIPALITY, TO AT LEAST 2 WITNESS MONUMENTS. (WITNESS MONUMENTS SHALL BE MADE OF CONCRETE, NATURAL STONE, IRON, OR OTHER EQUALLY DURABLE MATERIAL.) DESCRIBE WITNESS MONUMENTS.

(D) SHOW A PLAN VIEW DRAWING, DEPICTING THE RELEVANT MONUMENTS AND REFERENCE TIES, WHICH IS SUFFICIENTLY DETAILED TO ENABLE ACCURATE RELOCATION OF THE CORNER



LEGEND

- 3/4" X 24" REBAR SET WEIGHING 1.50 LBS./LIN. FT.
- ⊙ VERNON COUNTY MONUMENT W/ BRASS CAP SET

(E) DESCRIBE ANY MATERIAL DISCREPANCY BETWEEN THE LOCATION OF THE CORNER AS RESTORED OR REESTABLISHED AND THE LOCATION OF THAT CORNER AS PREVIOUSLY RESTORED OR REESTABLISHED BY DISTANCE AND DIRECTION. SHOW THE DISCREPANCY ON THE PLAN VIEW DRAWING UNDER (D), ABOVE. SHOW THE DISTANCES BETWEEN THE CORNER AS PREVIOUSLY RESTORED OR REESTABLISHED AND (1) THE CORNER AS RESTORED OR REESTABLISHED, AND (2) TO AT LEAST 2 OF THE WITNESS MONUMENTS AS SHOWN ON THE DRAWING IN (D), ABOVE.

NONE

(F) WAS THE CORNER RESTORED THROUGH ACCEPTANCE OF (1) AN OBLITERATED EVIDENCE LOCATION, OR (2) A FOUND PERPETUATED LOCATION?

SET MONUMENT ON TOWN LINE FROM RECORDED CLOSING CORNER DISTANCES.

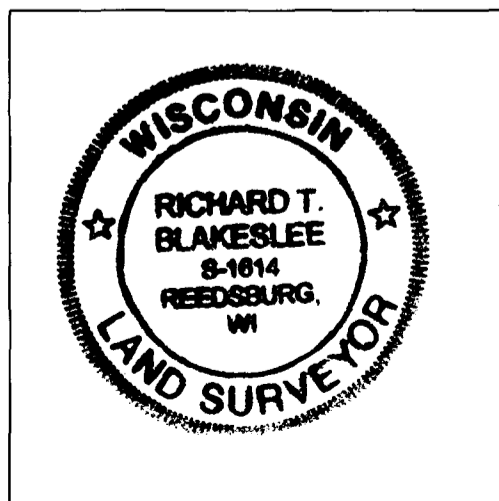
(G & H) WAS THE CORNER REESTABLISHED THROUGH LOST CORNER PROPORTIONATE METHODS? IF SO SHOW THE METHOD, INCLUDING THE DIRECTIONS AND DISTANCES TO OTHER PUBLIC LAND SURVEY CORNERS USED AS EVIDENCE OR USED FOR PROPORTIONING IN DETERMINING THE CORNER LOCATION.

NO

AFFIX LAND SURVEYOR SEAL

(I) I, RICHARD T. BLAKESLEE CERTIFY THAT THE LOCATION SHOWN ON THIS RECORD WAS DETERMINED BY ME OR UNDER MY DIRECTION AND CONTROL AND THAT THIS U.S. PUBLIC LAND SURVEY MONUMENT RECORD IS CORRECT AND COMPLETE TO THE BEST OF MY KNOWLEDGE AND BELIEF.

Richard T. Blakeslee 7-21-08
SIGNATURE DATE

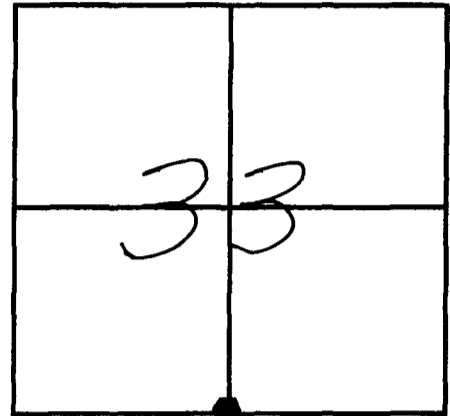


VERNON COUNTY COORDINATE SUBMISSION FORM
"As An Addendum To"
VERNON COUNTY
CERTIFIED U.S. PUBLIC LAND SURVEY MONUMENT RECORD

INSTRUCTIONS: THIS RECORD FORM SHOULD BE USED WHEN COORDINATES ARE PROVIDED FOR A PUBLIC LAND SURVEY CORNER AND SHALL INCLUDE ALL OF THE FOLLOWING ELEMENTS (A-D)

(A) IDENTIFY THE CORNER BY REFERENCE TO THE U.S. PUBLIC LAND SURVEY SYSTEM IN DIAGRAM AT RIGHT

■ = CORNER MONUMENT



T 14 N, R 1 E ~~W~~

(B) COORDINATES:

GEOGRAPHIC (Degrees Minutes Seconds):

LATITUDE: none determined

LONGITUDE: _____

ELLIPSOID HT (m): _____

HORIZONTAL DATUM: _____

ORTHOMETRIC HT (U.S. ft): _____

VERTICAL DATUM: _____

traversed to corner from GPS control (1 set-up)

VERNON COUNTY (U.S. FEET)

Coord. Quality (+/-)

NORTHING (Y): 179,775.745

EASTING (X): 836,155.972

GPS METHOD USED TO COMPUTE COORDINATES (check as applicable):

RTK single observation averaged observations
 Static Baseline single baseline averaged baselines .03' OPUS Solution

BASE CONTROL USED FOR COORDINATE COMPUTATION:

Station Name	Station Coordinates (Lat/Long)
<u>Greenwood N GPS</u>	<u>43 38 28.59107 090 21 27.35009</u>
<u>Dilly GPS</u>	<u>43 38 46.62992 090 27 05.22154</u>

* Please List Additional Control Stations Used on Back of Form

Was a Least Squares Adjustment Used to Compute Coordinate? Yes / No

Date(s) of GPS Observations: ~~XXXXXXXXXX~~ 07-16-08

(C) REASON FOR COORDINATE SUBMITTAL (check one):

- Being Filed With a New U.S. PLS Monument Record
 To Correct the Coordinates Listed on a Previously Filed PLS Monument Record
 To Provide Coordinates for a Previously Filed PLS Monument Record without Coordinates
 To Provide Supplemental Coordinates for a Previously Filed PLS Monument Record

MOST RECENT PLS MONUMENT RECORD DATE: ____ / ____ / ____

R.L.S. WHO CREATED MOST RECENT PLS MONUMENT RECORD: _____

(D) AGENT(S) PERFORMING GPS OBSERVATIONS & COORDINATE COMPUTATION

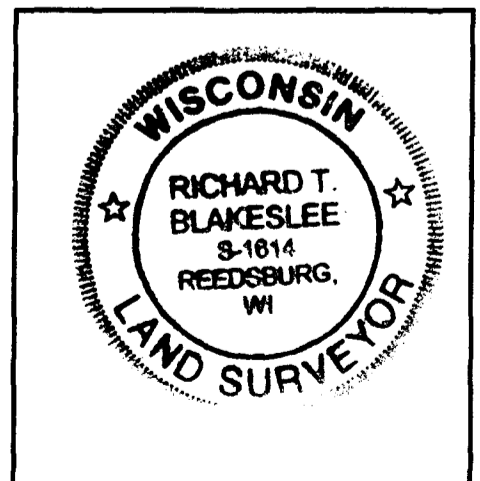
- 1) Josh Murphy
 2) Richard Blakeslee

I, Richard Blakeslee

CERTIFY THAT THE COORDINATES PROVIDED ON THIS RECORD WERE DETERMINED BY ME OR UNDER MY DIRECTION AND CONTROL AND THAT THIS COORDINATE SUBMISSION FORM IS CORRECT AND COMPLETE TO THE BEST OF MY KNOWLEDGE AND BELIEF.

Richard T. Blakeslee 7-21-08
 SIGNATURE DATE

Seal



* Please Provide Any Additional Notes/Information on Back of Form

Coordinate Comparisons - Blakelsee - Excelsior 092711

Corner Designation	Corner Description	Northing	Easting	Description	Comments
D – Excelsior Group	NW 26-T14N-R1E	190591.600	843959.030	Lunde Found	WISCRS 83 (2007) – Multiple RTK Locations
Blakeslee		190591.631	843958.988	Lunde Set	Assumed to be WISCRS 83 (1997)
Difference		-0.031	0.042		Differing Adjustments – Acceptable Delta – On Steep Slope
E – Excelsior Group	S 33-T14N-R1E	179777.271	836164.655	Lunde Found	WISCRS 83 (2007) – Static w/ OPUS Check
Blakeslee		179775.745	836155.972	Lunde Set	
Difference		1.526	8.683		
G – Excelsior Group	N 3-T13N-R1E	179945.230	841398.180	Lunde Found	WISCRS 83 (2007) – Static O/S (3) w/ OPUS & RTK Checks
Blakeslee		179951.020	841395.920	Lunde Set	** Note: Monument is 0.90' north of town line **
Difference		-5.790	2.260		