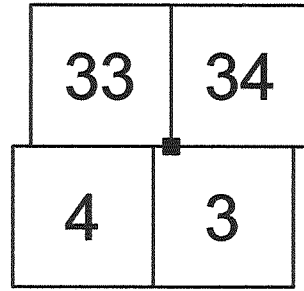


U.S. PUBLIC LAND SURVEY MONUMENT RECORD VERNON COUNTY, WISCONSIN.

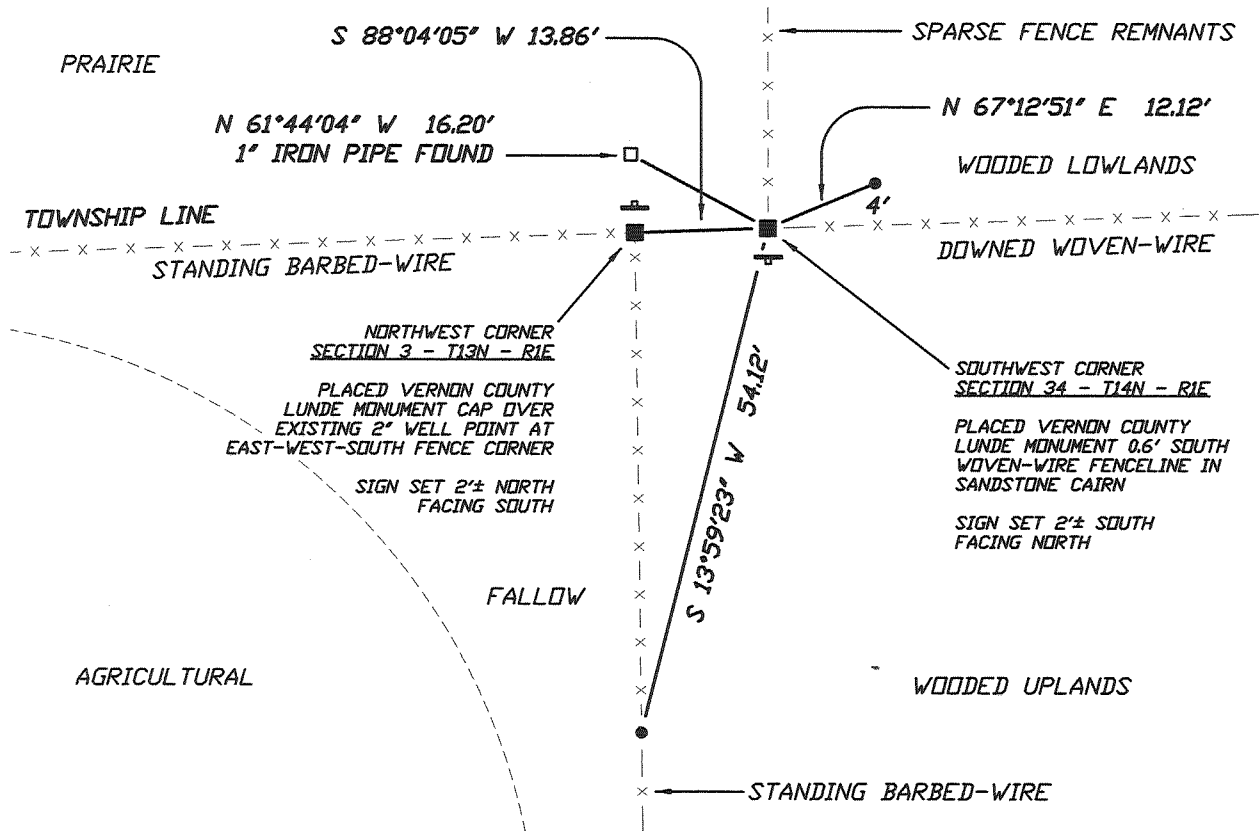
IN ACCORDANCE WITH WISCONSIN ADMINISTRATIVE CODE, CHAPTER A-E 7.08 (3) (A) - (I)

LOCATION: (A) THE IDENTITY OF THE CORNER, AS REFERENCED TO THE U.S. PUBLIC LAND SURVEY SYSTEM.

SECTION 34 - TOWN 14 N - RANGE 1 E
 TOWNSHIP OF HILLSBORO
 TYPE OF CORNER SOUTHWEST CORNER (STANDARD)
 TYPE OF MONUMENT VERNON COUNTY LUNDE MONUMENT SET



PLAN VIEW: (C) REFERENCE TO AT LEAST 4 WITNESS MONUMENTS. WITNESS MONUMENTS SHALL BE CONCRETE, NATURAL STONE, IRON, BEARING TREES OR OTHER EQUALLY DURABLE MATERIAL, EXCEPT WOOD OTHER THAN BEARING TREES; (D) A PLAN VIEW DEPICTING THE RELEVANT MONUMENTS AND REFERENCE TIES WHICH ARE SUFFICIENT IN DETAIL TO ENABLE ACCURATE RELOCATION OF THE CORNER MONUMENT IF THE CORNER MONUMENT IS DISTURBED; (E) A DESCRIPTION OF ANY MATERIAL DISCREPANCY BETWEEN THE LOCATION OF THE CORNER AS RESTORED OR REESTABLISHED AND THE LOCATION OF THAT CORNER AS PREVIOUSLY RESTORED OR REESTABLISHED;



LEGEND

- PUBLIC LAND SURVEYING SYSTEM CORNER MONUMENT DESCRIBED
- 0.75" x 24" RE-BAR PLACED AS REFERENCE MONUMENT
- EXISTING FERROUS PIPE FOUND (SIZE AS NOTED)
- EXISTING FERROUS ROD FOUND (SIZE AS NOTED)
- ⊥ COUNTY SURVEYOR WITNESS SIGN ON STEEL CHANNEL POST PLACED

SCALE: 1" = 20 FEET

** OTHER REFERENCES AND FEATURES ARE AS NOTED IN THE PLAN VIEW ABOVE

UNLESS NOTED, BEARINGS ARE GRID

SURVEYOR'S CERTIFICATE: CHAPTER 7.08 (3) (I)

THE UNDERSIGNED HEREBY CERTIFIES THAT THE U.S. PUBLIC LAND SURVEY MONUMENT RECORD SHOWN WAS DETERMINED BY THEM OR UNDER THEIR DIRECTION AND IS CORRECT TO THE BEST OF THEIR KNOWLEDGE AND BELIEF.



[Handwritten Signature]

10/6/2011

THE EXCELSIOR GROUP, LLC
 MATTHEW M FILUS, WISCONSIN REGISTERED LAND SURVEYOR S-2185

DATE CERTIFIED

U.S. PUBLIC LAND SURVEY MONUMENT RECORD VERNON COUNTY, WISCONSIN.

IN ACCORDANCE WITH WISCONSIN ADMINISTRATIVE CODE, CHAPTER A-E 7.08 (3) (A) - (I)

RECOVERY PROCEDURES:

(B) A DESCRIPTION OF ANY RECORD EVIDENCE, MONUMENT EVIDENCE, OCCUPATIONAL EVIDENCE, TESTIMONIAL EVIDENCE OR ANY OTHER MATERIAL EVIDENCE CONSIDERED BY THE SURVEYOR, AND WHETHER THE MONUMENT WAS FOUND OR PLACED;

GOVERNMENT LAND OFFICE (GLO) ORIGINAL SURVEY
MARCH 1845, J.E. WHITCHER, SURVEYOR

WEST RANDOM ON SOUTH SIDE TOWN 14 NORTH RANGE 1 EAST

6M 3CH 23 LKS INTERSECT 4TH MERIDIAN 11.58 N

EAST CORRECTED SOUTH SIDE SECTIONS 33, VARIATION 10°18' E

80.00 SET POST CORNER TO SECTIONS 33 & 34
WHITE OAK 16, N 68½° W, 50 LINKS (33.00')
ELM 22, N 23½° E, 43 LINKS (28.38')

VOLUME 1 - PAGE 356 SURVEYOR RECORDS, DECEMBER 16TH-21ST, 1889, W.H. KNOWER COUNTY SURVEYOR

IN THIS RECORD, W.H. KNOWER SUBDIVIDES SECTION 34

VOLUME 1 - PAGE 403 SURVEYOR RECORDS, MARCH 18TH, 1892, JOHN FARRELL, SURVEYOR

IN THIS RECORD, FARRELL SUBDIVIDES SECTION 4

VOLUME 1 - PAGE 418 SURVEYOR RECORDS, MARCH 20TH & 24TH, 1893, STERLING, COUNTY SURVEYOR

IN THIS RECORD, FARRELL SUBDIVIDES SECTION 3

THE EXCELSIOR GROUP, LLC, AUGUST, 2011, MATTHEW M FILUS, SURVEYOR

NO ORIGINAL GLO CORNER OR ACCESSORY EVIDENCE REMAINS FOR THIS CORNER. HOWEVER, I HAVE FOUND A 2" DIAMETER WELL POINT AT A EAST-WEST-SOUTH FENCE CORNER VERIFIED TO BE THE NORTHWEST CORNER OF SECTION 3, T13N, R1E.

I HAVE ESTABLISHED THIS CORNER BY PROJECTING THE TOWNSHIP LINE FROM THE SOUTH ¼ CORNER OF SECTION 33 THROUGH THE CLOSING NORTHWEST CORNER OF SECTION 3 THE PROTRACTED GLO DISTANCE OF 21 LINKS OR 13.86'. THIS LOCATION FITS THE OCCUPATION WELL, FALLING ON THE SOUTH EDGE OF A DOWNED WOVEN-WIRE FENCE RUNNING EAST-WEST AND IT'S INTERSECTION WITH SPARSE REMNANTS OF FENCING FROM THE NORTH. THIS LOCATION ALSO FITS ALL THREE SURVEYS LISTED ABOVE WELL AS DEPICTED ON SHEET THREE OF THIS RECORD.

I HAVE PLACED A VERNON COUNTY LUNDE MONUMENT AT THIS LOCATION WITH A CAIRN OF SANDSTONE TO HELP STABILIZE THE MOIST, HEAVY SOILS PRESENT, WITNESSED AS SHOWN ON SHEET 1 AND POSITIONED AS SHOWN ON SHEETS 4 AND 5 OF THIS DOCUMENT.

(E) A DESCRIPTION OF ANY MATERIAL DISCREPANCY BETWEEN THE LOCATION OF THE CORNER AS RESTORED OR REESTABLISHED AND THE LOCATION OF THAT CORNER AS PREVIOUSLY RESTORED OR REESTABLISHED;

NONE

(F) WHETHER THE CORNER WAS RESTORED THROUGH ACCEPTANCE OF AN OBLITERATED EVIDENCE LOCATION OR A FOUND PERPETUATED LOCATION;

AN OBLITERATED EVIDENCE LOCATION

(G) WHETHER THE CORNER WAS REESTABLISHED THROUGH LOST-CORNER PROPORTIONATE METHODS;

YES

SURVEYOR'S CERTIFICATE: CHAPTER 7.08 (3) (I)

THE UNDERSIGNED HEREBY CERTIFIES THAT THE U.S. PUBLIC LAND SURVEY MONUMENT RECORD SHOWN WAS DETERMINED BY THEM OR UNDER THEIR DIRECTION AND IS CORRECT TO THE BEST OF THEIR KNOWLEDGE AND BELIEF.




THE EXCELSIOR GROUP, LLC

MATTHEW M FILUS, WISCONSIN REGISTERED LAND SURVEYOR S-2185



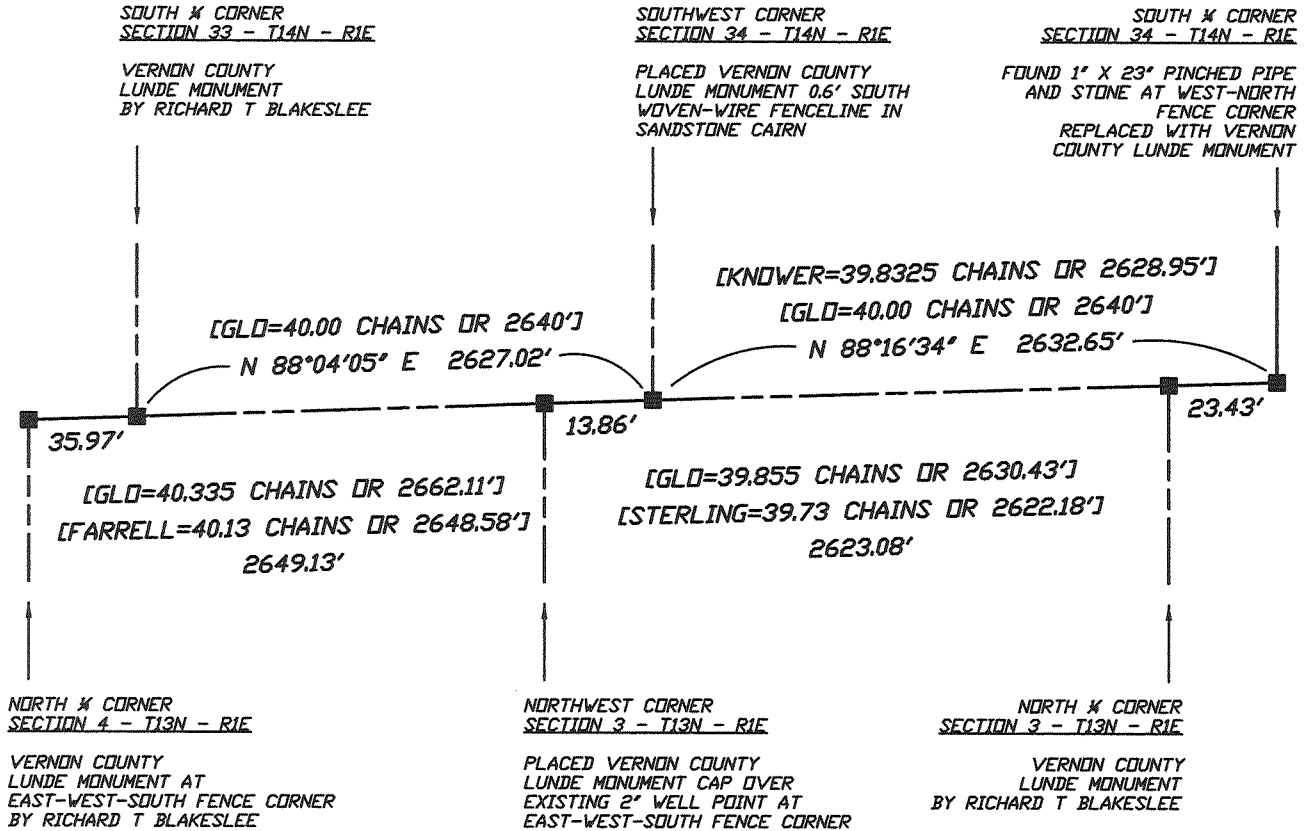
DATE CERTIFIED

U.S. PUBLIC LAND SURVEY MONUMENT RECORD VERNON COUNTY, WISCONSIN.

IN ACCORDANCE WITH WISCONSIN ADMINISTRATIVE CODE, CHAPTER A-E 7.08 (3) (A) - (I)

ADJACENT PLSS CORNER LOCATIONS:

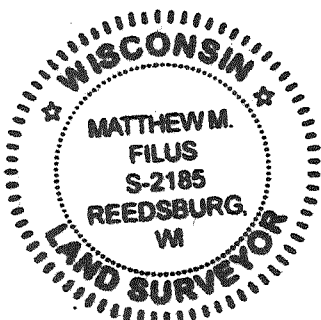
(H) THE DIRECTIONS AND DISTANCES TO OTHER PUBLIC LAND SURVEY CORNERS WHICH WERE USED AS EVIDENCE OR USED FOR PROPORTIONING IN DETERMINING THE CORNER LOCATION;



NOT TO SCALE
UNLESS NOTED, BEARINGS ARE GRID

SURVEYOR'S CERTIFICATE: CHAPTER 7.08 (3) (I)

THE UNDERSIGNED HEREBY CERTIFIES THAT THE U.S. PUBLIC LAND SURVEY MONUMENT RECORD SHOWN WAS DETERMINED BY THEM OR UNDER THEIR DIRECTION AND IS CORRECT TO THE BEST OF THEIR KNOWLEDGE AND BELIEF.



Matthew M. Filus

10/6/2011

THE EXCELSIOR GROUP, LLC
MATTHEW M FILUS, WISCONSIN REGISTERED LAND SURVEYOR S-2185

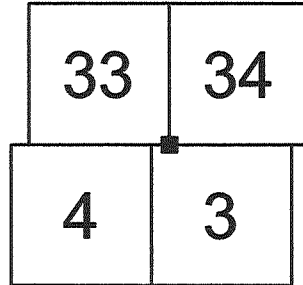
DATE CERTIFIED

VERNON COUNTY COORDINATE FORM

"AS AN ADDENDUM TO"
A CERTIFIED U.S. PUBLIC LAND SURVEY MONUMENT RECORD

LOCATION: (A) THE IDENTITY OF THE CORNER, AS REFERENCED TO THE U.S. PUBLIC LAND SURVEY SYSTEM.

SECTION 34 - TOWN 14 N - RANGE 1 E
 TOWNSHIP OF HILLSBORO
 TYPE OF CORNER SOUTHWEST CORNER (STANDARD)
 TYPE OF MONUMENT VERNON COUNTY LUNDE MONUMENT SET



COORDINATES: (B)

GEOGRAPHIC (DEGREES, MINUTES AND DECIMAL SECONDS TO 4 PLACES)

LATITUDE 43° 38' 23.70039" N
 LONGITUDE 90° 22' 20.64012" W
 ELLIPSOID HT (M) N/A
 HORIZONTAL DATUM WISCRS - VERNON COUNTY - NAD83 (2007)
 ORTHOMETRIC HT (US FT) N/A
 VERTICAL DATUM N/A

VERNON COUNTY COORDINATES (US FT)	COORDINATE QUALITY
NORTHING <u>179,865.829</u>	<u>± 0.04'</u>
EASTING <u>838,790.181</u>	<u>± 0.04'</u>

METHOD USED TO COMPUTE COORDINATES (CHECK AND COMPLETE AS APPLICABLE)

RTK OBSERVATIONS STATIC BASELINES OPUS SOLUTION (ATTACH COPY OF OPUS REPORT)
 COMBINATION OF CONVENTIONAL PROCEDURES WITH GPS OBSERVATIONS TO SET TEMPORARY CONTROL
 WAS A LEAST SQUARES ADJUSTMENT USED TO COMPUTE COORDINATES?

FOR NON-OPUS SOLUTIONS, LIST THE CONTROL STATIONS USED FOR COORDINATE COMPUTATIONS (A MINIMUM OF 2 DIFFERENT CONTROL STATIONS OR 2 DIFFERENT TIME COMBINATIONS FROM THE SAME CONTROL STATION ARE REQUIRED):

WHEN A DIRECT OBSERVATION OF THE CORNER IS NOT POSSIBLE, AND A COMBINATION OF DIFFERENT GPS AND/OR CONVENTIONAL PROCEDURES MUST BE USED TO DETERMINE COORDINATE VALUES, PROVIDE A BRIEF DESCRIPTION OF YOUR PROCEDURES ON THE BACK OF THIS FORM.

** THIS CORNER MONUMENT WAS POSITIONED THROUGH A NETWORK OF BOTH GPS AND CONVENTIONAL OBSERVATIONS REFER TO SHEET 5 OF 5 FOR THE CONSTRAINED CONTROL STATIONS, OBSERVATION TIMES AND ADJUSTMENT RESULTS

REASON FOR SUBMITTAL: (C) (CHECK ONE)

BEING FILED WITH A NEW US PLSS MONUMENT RECORD
 TO CORRECT THE COORDINATES LISTED ON A PREVIOUSLY FILED PLSS MONUMENT RECORD
 TO PROVIDE COORDINATES FOR A PREVIOUSLY FILED PLSS MONUMENT RECORD WITHOUT COORDINATES
 TO PROVIDE SUPPLEMENTAL COORDINATES FOR A PREVIOUSLY FILED PLSS MONUMENT RECORD

RLS AND DATE OF PLSS MONUMENT RECORD _____

SURVEYOR'S CERTIFICATE: (D) AGENT(S) PERFORMING GPS OBSERVATION & COORDINATE COMPUTATION

I, MATTHEW M FILUS, WISCONSIN REGISTERED LAND SURVEYOR NUMBER 2185, HEREBY CERTIFY THAT THE COORDINATES PROVIDED ON THIS RECORD WERE DETERMINED BY ME OR UNDER MY DIRECTION AND CONTROL AND THAT THIS COORDINATE SUBMISSION FORM IS CORRECT AND COMPLETE TO THE BEST OF MY KNOWLEDGE AND BELIEF.



Matthew M. Filus

THE EXCELSIOR GROUP, LLC
 MATTHEW M FILUS, WISCONSIN REGISTERED LAND SURVEYOR S-2185

10/6/2011

DATE CERTIFIED

VERNON COUNTY COORDINATE FORM

"AS AN ADDENDUM TO"

A CERTIFIED U.S. PUBLIC LAND SURVEY MONUMENT RECORD

CONTROL STATIONS, OBSERVATION TIMES & ADJUSTMENT RESULTS:

HORIZONTAL ADJUSTMENT REPORT

Unadjusted Observations

Control Coordinates:					
Sta.	N:	E:	StErr N:	StErr E:	
1016	179842.276	838739.893	0.034	0.030	GPS OBSERVATION 9/8/2011 15:03-15:33
1017	179764.744	838574.278	0.030	0.026	GPS OBSERVATION 9/8/2011 15:34-15:59
DILLY	182094.130	817853.323	0.000	0.000	
GREENWOOD	180380.777	842706.521	0.000	0.000	
HILLS	195721.217	837995.861	0.000	0.000	
WONEWOC	194112.130	861156.707	0.000	0.000	

Distances:				
From Sta.	To Sta.	Dist.	StErr	
1016	1017	182.86	0.01	
1016	2043	56.88	0.02	
1016	2044	55.39	0.02	

Angles:				
BS Sta.	Occ. Sta.	FS Sta.	Angle	StErr (Sec.)
1017	1016	2043	180-51'19"	51
1017	1016	2044	180-58'11"	52

Adjusted Coordinates

Adjusted Local Coordinates				
Sta.	N:	E:	StErr N:	StErr E:
1016	179842.275	838739.892	0.002	0.002
1017	179764.745	838574.279	0.002	0.001
DILLY	182094.130	817853.323	0.000	0.000
GREENWOOD	180380.777	842706.521	0.000	0.000
HILLS	195721.217	837995.861	0.000	0.000
WONEWOC	194112.130	861156.707	0.000	0.000
2043	179865.618	838791.756	0.003	0.002
2044	179864.906	838790.444	0.003	0.002

Adjusted Coordinates Error Ellipses, 68% CI				
Sta.	Semi Major Axis	Semi Minor Axis	Max. Error Az.	
1016	0.007	0.004	S 20-45'01"E	
1017	0.006	0.004	S 17-53'27"E	
DILLY	0.000	0.000	N 00-00'00"E	
GREENWOOD	0.000	0.000	N 00-00'00"E	
HILLS	0.000	0.000	N 00-00'00"E	
WONEWOC	0.000	0.000	N 00-00'00"E	
2043	0.009	0.005	S 22-50'13"E	
2044	0.009	0.005	S 22-46'06"E	

Relative 1:20,000 Error and Specification Tolerances

Sta.	Sta.	Dist.	Actual Semi Major	Allowable Semi Major	Ratio Actual/Allowable	Semi Minor	Max. Err. Az.
24	DILLY	21041.38	0.01	1.05	0.01	0.01	S 24-30'57"E
24	GREENWOOD	3963.84	0.01	0.20	0.04	0.01	S 24-30'57"E
24	HILLS	15875.05	0.01	0.79	0.01	0.01	S 24-30'57"E
24	WONEWOC	26530.20	0.01	1.33	0.01	0.01	S 24-30'57"E

Adjusted Observations

Adjusted Distances						
From Sta.	To Sta.	Distance	Residual	StdRes.	StdDev	
1016	1017	182.86	0.00	0.0	0.00	
1016	2043	56.88	-0.00	0.0	0.00	
1016	2044	55.39	-0.00	0.0	0.00	
Root Mean Square (RMS)			0.00			

Adjusted Angles						
BS Sta.	Occ. Sta.	FS Sta.	Angle	Residual	StdRes	StdDev(Sec.)
1017	1016	2043	180-51'19"	00	0.0	03
1017	1016	2044	180-58'11"	00	0.0	04
Root Mean Square (RMS)				00		

Resection Report
Mon Sep 12 03:25:10 2011

Reference Points
Northing Easting
179865.618 838791.756
179864.906 838790.444

Measurements
Distance
1.590
0.960

Calculated Resection Point
Northing Easting
179865.829 838790.181

SURVEYOR'S CERTIFICATE: (D) AGENT(S) PERFORMING GPS OBSERVATION & COORDINATE COMPUTATION

I, MATTHEW M FILUS, WISCONSIN REGISTERED LAND SURVEYOR NUMBER 2185, HEREBY CERTIFY THAT THE COORDINATES PROVIDED ON THIS RECORD WERE DETERMINED BY ME OR UNDER MY DIRECTION AND CONTROL AND THAT THIS COORDINATE SUBMISSION FORM IS CORRECT AND COMPLETE TO THE BEST OF MY KNOWLEDGE AND BELIEF.



(Signature)

10/6/2011

THE EXCELSIOR GROUP, LLC
MATTHEW M FILUS, WISCONSIN REGISTERED LAND SURVEYOR S-2185

DATE CERTIFIED