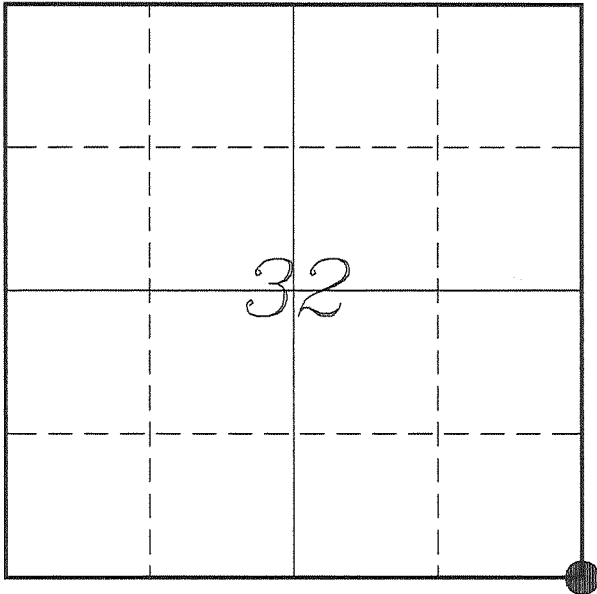

U. S. PUBLIC LAND SURVEY MONUMENT RECORD

**SECTION 32, T14N, R1E, TOWN OF HILLSBORO
VERNON COUNTY, WISCONSIN**


LOCATION OF LANDMARK

Witnesses: Laurence E Johns III
Larry Handschy

Date: 25 August 2017

<i>VERNON COUNTY COORDINATE SYSTEM</i>	
<i>Northing</i>	<i>179709.007</i>
<i>Easting</i>	<i>833536.015</i>
<i>Datum</i>	<i>NAD 1983 (2011)</i>
<i>Elevation</i>	
<i>Datum</i>	
<i>TYPE OF LANDMARK:</i>	
<i>Existing 3/4" Iron Rod</i>	
<i>BEARINGS ARE REFERENCED TO:</i>	
<i>Vernon County Coordinates (Survey Grade)</i>	

Eagle Ridge Surveying
PO Box 213
Wilton, Wisconsin

Describe any record evidence, monument evidence, testimonial evidence or any other material evidence you considered and whether the monument was found or restored through acceptance of an obliterated evidence location.

No bearing trees of record were located.

Found the 3/4" iron rod, set by Crook, on the South side of a 26" Elm that was used as the corner of fences to the West, North and East.

The distance to the East fit well with government notes, but the distance to the West is short by 76' or approximately a chain.

The government offset distance of 58.08' (88 links) fit the fence corners exactly.

I accepted the 3/4" iron rod as the best available evidence of the original government corner. Since the iron rod was embedded into a tree root, I could not remove it.

Describe or show any material discrepancy between the location of the restored corner and that of the corner previously restored or re-established.

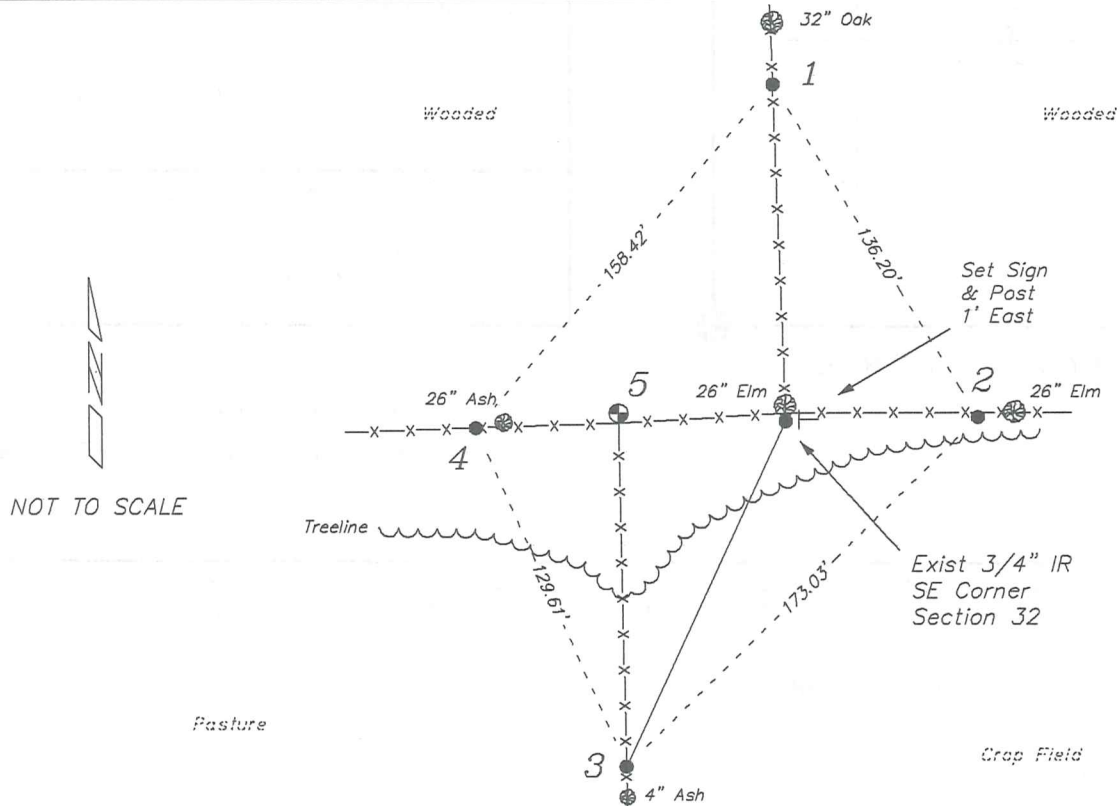
J E Witcher established this corner in March 1845.

CM Sterling was at this corner, in March 1893, during a survey in Section 32. He shows that he found the government corner.

F Curtis Crook was at this corner, in February 1995, during a survey in Section 5. He shows that he set a 3/4" iron rod at this corner.

RECORD OF DURABLE WITNESS MONUMENTS

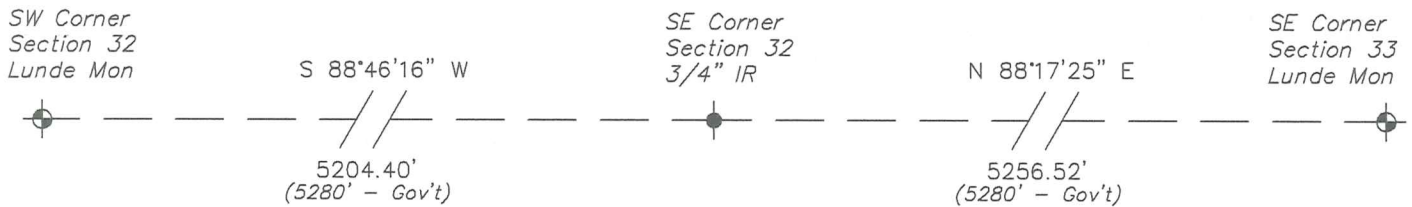
NO	DESCRIPTION	BEARING	DISTANCE
1	Set 3/4" x 18" Iron Rod In Fence - 20' South of a 32" Oak	N 01°58'41" W	117.77'
2	Set 3/4" x 18" Iron Rod In Fence - 3' West of a 26" Elm	N 88°51'40" E	66.71'
3	Set 3/4" x 18" Iron Rod In Fence - 10' North of a 4" Ash	S 24°41'54" W	133.21'
4	Set 3/4" x 18" Iron Rod In Fence - 3' West of a 26" Ash	S 88°48'00" W	107.57'
5	Lunde Monument NE Corner - Section 5	S 89°29'16" W	58.08'



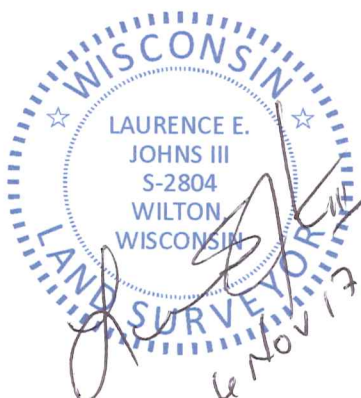
PLAN VIEW DRAWING OF REFERENCE TIES

Map Showing Distance And Direction To Other Public Land Survey Corners Used For Re-Establishing The Corner

Note:
Measurements were not made to this corner at this time.
Bearings and distances shown are based on recorded information and shown for reference.

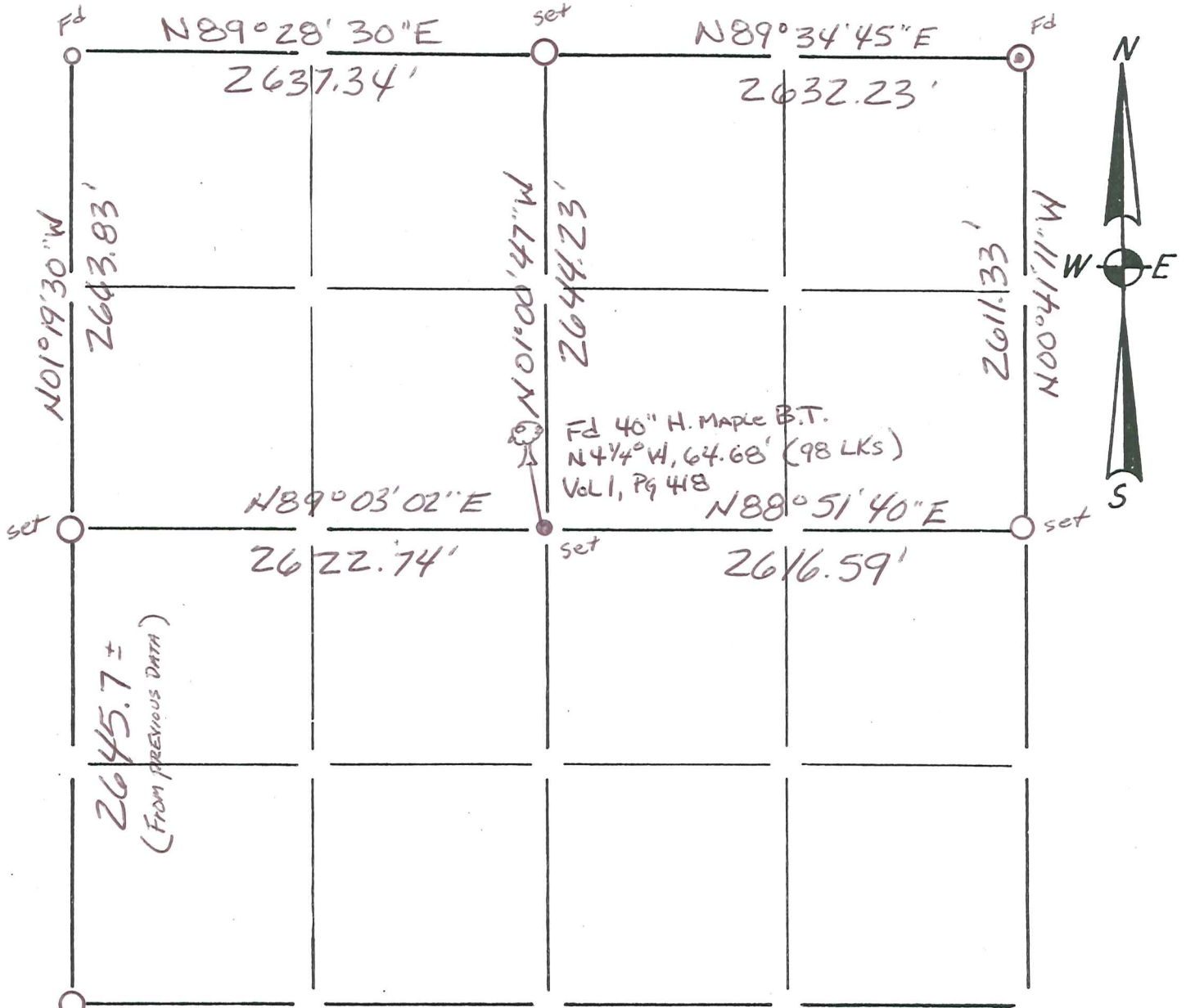


I, Laurence E Johns III PLS 2804, Professional Land Surveyor, hereby certify that the corner location shown on this record was determined by me or under my direction and control, and that this U.S. Public Land Survey Monument Record is correct and complete to the best of my knowledge and belief.



Section Summary and Index

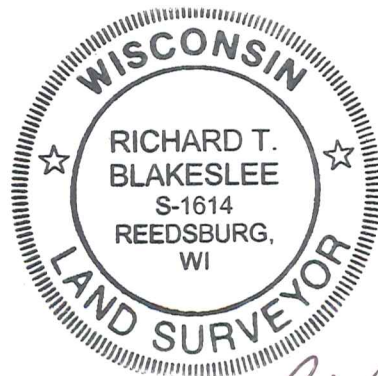
32 - 14N R1E
 Section Town Range



Fd (From original B.T.)

LEGEND

- ⊕ - Harrison cast iron monument.
- - Stone or concrete monument.
- - Other Vernon Co. Monument set
- - 1" I.P. Found.
- ⊙ - 1 1/4" I.P. Found
- - 3/4" x 18" RE-BAR Set



Richard T. Blakeslee
 4-4-07

SCANNED