

VERNON COUNTY CERTIFIED U.S. PUBLIC LAND SURVEY MONUMENT RECORD

INSTRUCTIONS: THIS RECORD SHALL SHOW THE LOCATION OF THE CORNER AND SHALL INCLUDE ALL OF THE FOLLOWING ELEMENTS (A-I)

(A) IDENTIFY THE CORNER BY REFERENCE TO THE U.S. PUBLIC LAND SURVEY SYSTEM

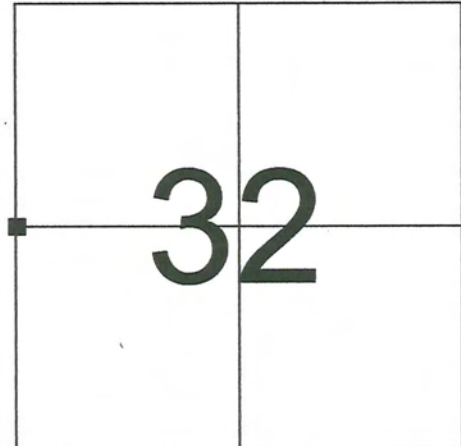
■ = CORNER MONUMENT RESTORED

WITNESSES TO CORNER LOCATION:

- 1) RICHARD BLAKESLEE
- 2) JOSH MURPHY
- 3) IVAN YODER

VERNON COUNTY COORDINATES

NORTHING: 182,241.083
EASTING: 828,273.795



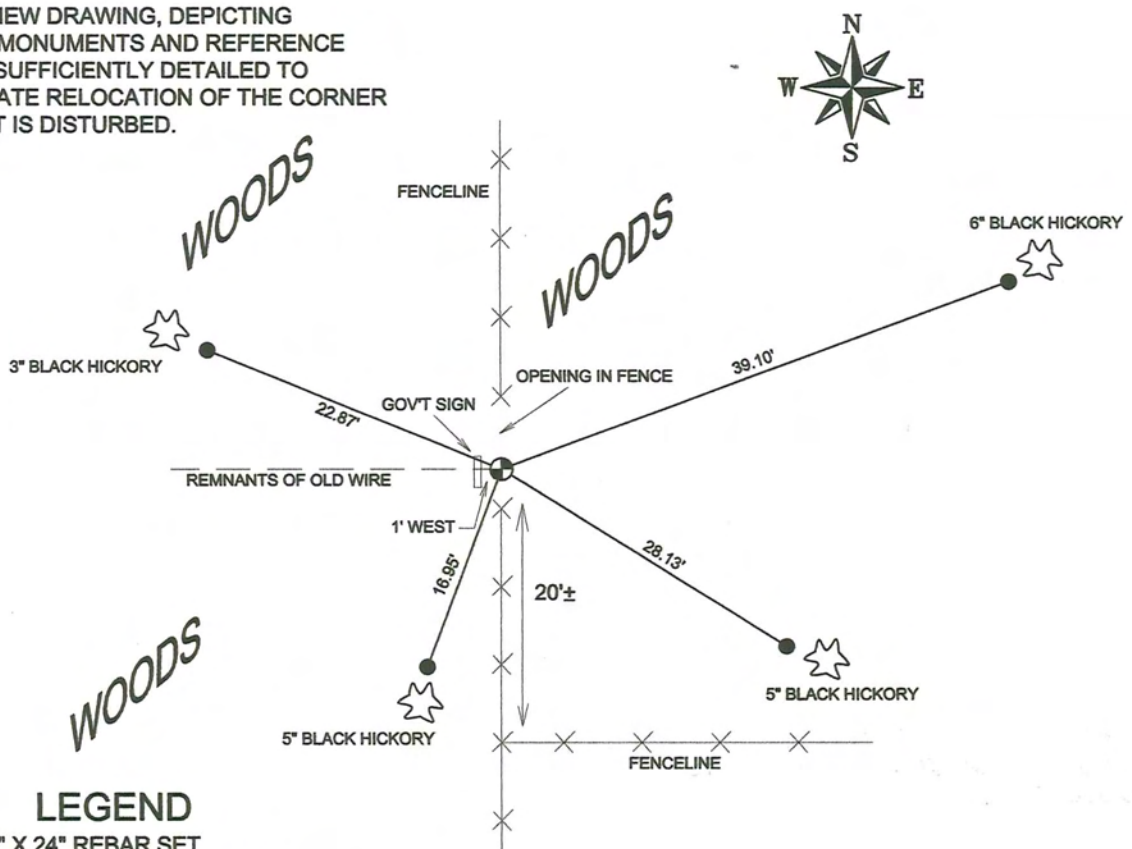
SECTION 32, TOWN 14 NORTH, RANGE 1 EAST

(B) DESCRIBE ANY RECORD EVIDENCE, MONUMENT EVIDENCE, OCCUPATIONAL EVIDENCE, TESTIMONIAL EVIDENCE OR ANY OTHER MATERIAL EVIDENCE YOU CONSIDERED, AND WHETHER THE MONUMENT WAS FOUND OR PLACED.

RESEARCHED ALL VERNON COUNTY SURVEY RECORDS REGARDING THIS CORNER. FOUND THAT THE ORIGINAL CORNER WAS SET IN 1852 PER GOVERNMENT NOTES. WE FOUND THAT COUNTY SURVEYOR B. STERLING FOUND THE ORIGINAL CORNER AND USED THIS CORNER TO SUBDIVIDE SECTION 32 IN 1893 (SEE VOL. 1, PG. 418). B. STERLING DID NOT MAKE ANY NEW BEARING TREES IN HIS SURVEY. WE FOUND A 1" IRON PIPE FROM A PREVIOUS SURVEY AT AN OLD FENCE INTERSECTION. WE TRAVERSED THE WEST LINE OF SECTION 32 AND FOUND THAT THIS POSITION FIT WELL WITH THE NORTHWEST CORNER AND SOUTHWEST CORNER'S OF SECTION 32. WE REPLACED THE 1" IRON PIPE WITH A VERNON COUNTY MONUMENT AND ESTABLISHED VERNON COUNTY COORDINATES ON IT.

(C) IN THE PLAN VIEW DRAWING BELOW, PROVIDE REFERENCE TIES TO AT LEAST 4 WITNESS MONUMENTS OR, IF THE LOCATION IS WITHIN A MUNICIPALITY, TO AT LEAST 2 WITNESS MONUMENTS. (WITNESS MONUMENTS SHALL BE MADE OF CONCRETE, NATURAL STONE, IRON, OR OTHER EQUALLY DURABLE MATERIAL.) DESCRIBE WITNESS MONUMENTS.

(D) SHOW A PLAN VIEW DRAWING, DEPICTING THE RELEVANT MONUMENTS AND REFERENCE TIES, WHICH IS SUFFICIENTLY DETAILED TO ENABLE ACCURATE RELOCATION OF THE CORNER MONUMENT IF IT IS DISTURBED.



LEGEND

- 3/4" X 24" REBAR SET WEIGHING 1.50 LBS./LIN. FT.
- ⊙ VERNON COUNTY MONUMENT W/ BRASS CAP SET

SCANNED

BB

(E) DESCRIBE ANY MATERIAL DISCREPANCY BETWEEN THE LOCATION OF THE CORNER AS RESTORED OR REESTABLISHED AND THE LOCATION OF THAT CORNER AS PREVIOUSLY RESTORED OR REESTABLISHED BY DISTANCE AND DIRECTION. SHOW THE DISCREPANCY ON THE PLAN VIEW DRAWING UNDER (D), ABOVE. SHOW THE DISTANCES BETWEEN THE CORNER AS PREVIOUSLY RESTORED OR REESTABLISHED AND (1) THE CORNER AS RESTORED OR REESTABLISHED, AND (2) TO AT LEAST 2 OF THE WITNESS MONUMENTS AS SHOWN ON THE DRAWING IN (D), ABOVE.

NONE

(F) WAS THE CORNER RESTORED THROUGH ACCEPTANCE OF (1) AN OBLITERATED EVIDENCE LOCATION, OR (2) A FOUND PERPETUATED LOCATION?

OLD FENCE CORNER ASSUMED TO PERPETUATE ORIGINAL CORNER'S LOCATION

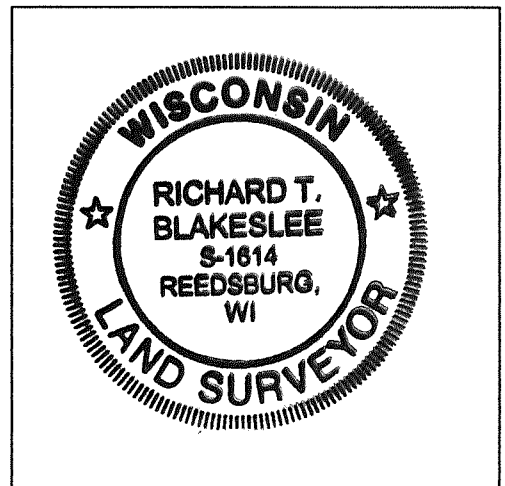
(G & H) WAS THE CORNER REESTABLISHED THROUGH LOST CORNER PROPORTIONATE METHODS? IF SO SHOW THE METHOD, INCLUDING THE DIRECTIONS AND DISTANCES TO OTHER PUBLIC LAND SURVEY CORNERS USED AS EVIDENCE OR USED FOR PROPORTIONING IN DETERMINING THE CORNER LOCATION.

NO

AFFIX LAND SURVEYOR SEAL

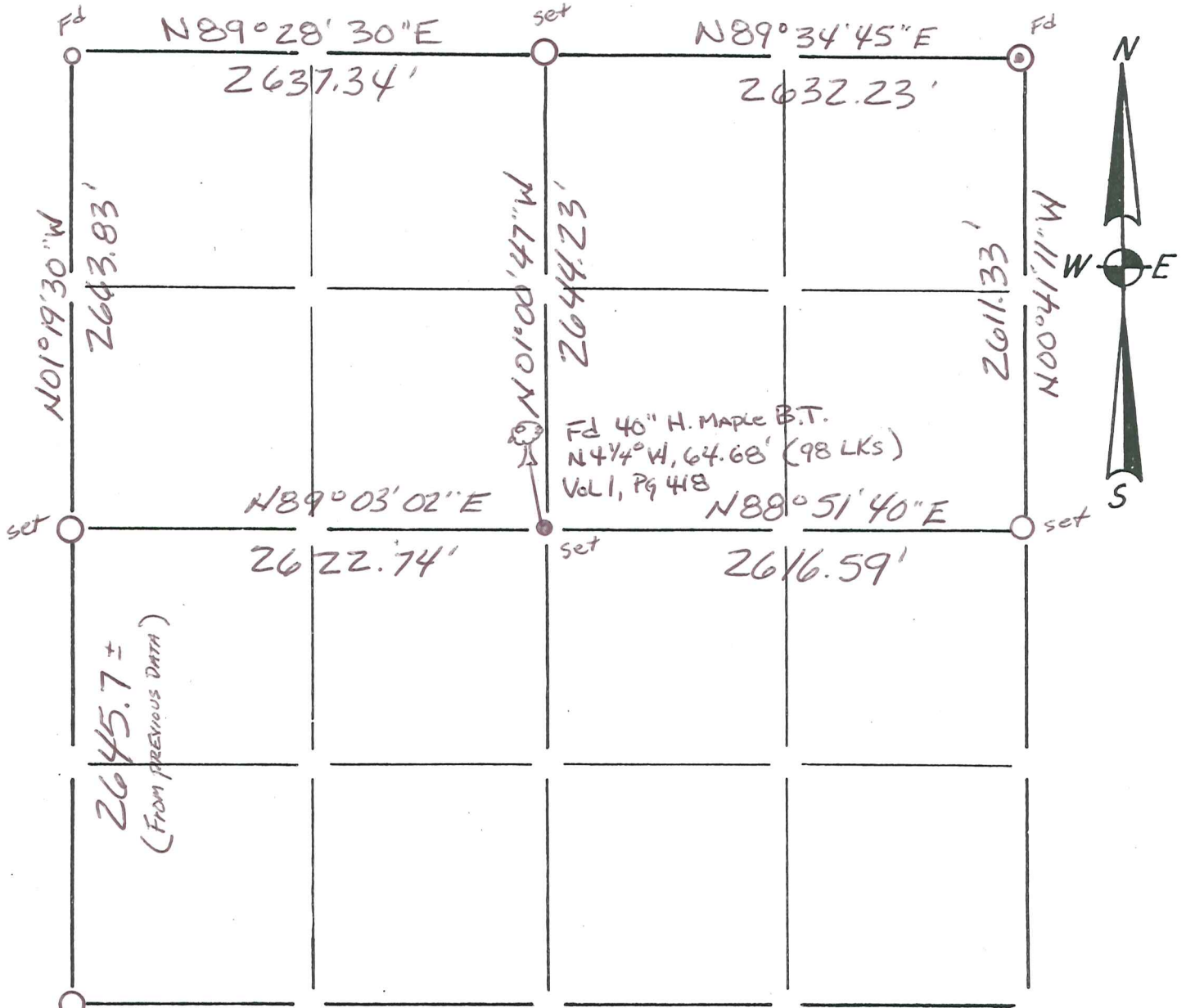
(I) I, RICHARD T. BLAKESLEE CERTIFY THAT THE LOCATION SHOWN ON THIS RECORD WAS DETERMINED BY ME OR UNDER MY DIRECTION AND CONTROL AND THAT THIS U.S. PUBLIC LAND SURVEY MONUMENT RECORD IS CORRECT AND COMPLETE TO THE BEST OF MY KNOWLEDGE AND BELIEF.

Richard T. Blakeslee 4-4-07
SIGNATURE DATE



Section Summary and Index

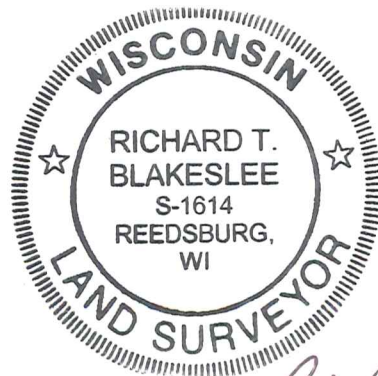
32 - 14N R1E
 Section Town Range



Fd (From original B.T.)

LEGEND

- ⊕ - Harrison cast iron monument.
- - Stone or concrete monument.
- - Other Vernon Co. Monument set
- - 1" I.P. Found.
- ⊙ - 1 1/4" I.P. Found
- - 3/4" x 18" RE-BAR Set



Richard T. Blakeslee
 4-4-07

SCANNED