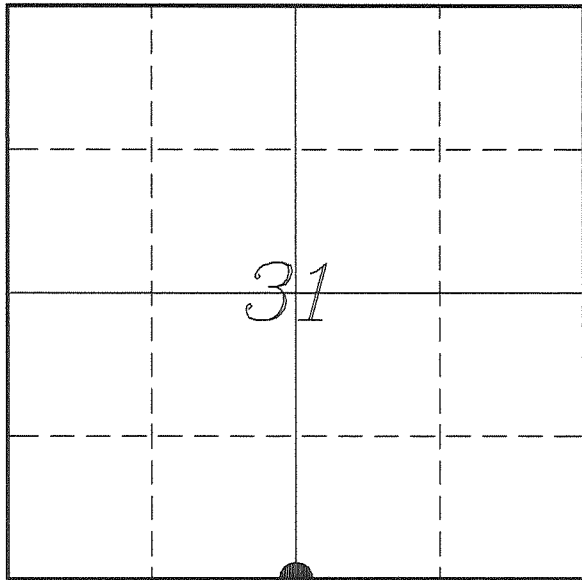


**U. S. PUBLIC LAND SURVEY MONUMENT RECORD**

**SECTION 31, T14N, R1E, TOWN OF HILLSBORO  
VERNON COUNTY, WISCONSIN**



LOCATION OF LANDMARK

VERNON COUNTY COORDINATE SYSTEM	
Northing	179496.143
Easting	825694.838
Datum	NAD 1983 (2011)
Elevation	
Datum	
TYPE OF LANDMARK:	
Existing 1 1/4" Iron Rod	
BEARINGS ARE REFERENCED TO:	
Vernon County Coordinates (Survey Grade)	

Witnesses: Larry Handschy

Eagle Ridge Surveying  
PO Box 213  
Wilton, Wisconsin

Date: 2 October 2017

*Describe any record evidence, monument evidence, testimonial evidence or any other material evidence you considered and whether the monument was found or restored through acceptance of an obliterated evidence location.*

Found the 1 1/4" steel bar as shown on Carroll's tie sheet and verified by his bearing trees.

This location fits occupation in the area, a 4-way fence corner. It also fits government notes to the West and East within 2 feet. Knower's distance to the West is long but appears to be close to 1 rod, so may have been a measuring error during his survey.

This monument is 11.2'± South of the straight line between section corners.

This location fits very well with previous surveys and with the original government survey so I have accepted the corner as the best available evidence of the original corner.

Carroll had set a 1 1/4" x 36" solid monument and it is my belief that it would be more stable than replacing it with a Lunde Monument, so left it in place.

*Describe or show any material discrepancy between the location of the restored corner and that of the corner previously restored or re-established.*

J E Whitcher established this corner in March 1845.

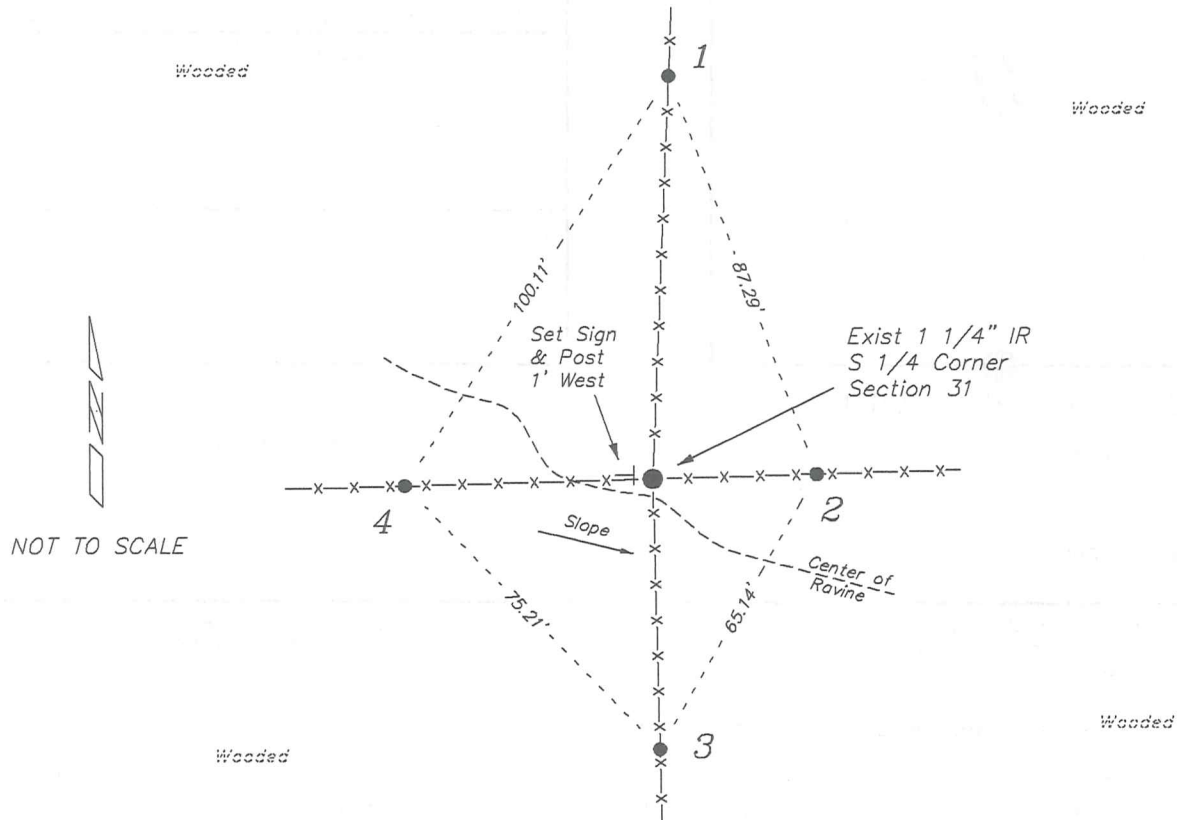
Wm Knower was at this corner, in January 1879, during a survey in Section 31. He shows that he marked two new bearing trees.

Patrick Carroll was at this corner, in August 2001, during a survey in Section 31. He set a 1 1/4" x 36" drill steel and prepared a tie sheet.

Christopher Fechner was at this corner, in December 2015, during a survey in Section 31. He shows finding a 1 1/4" IB.

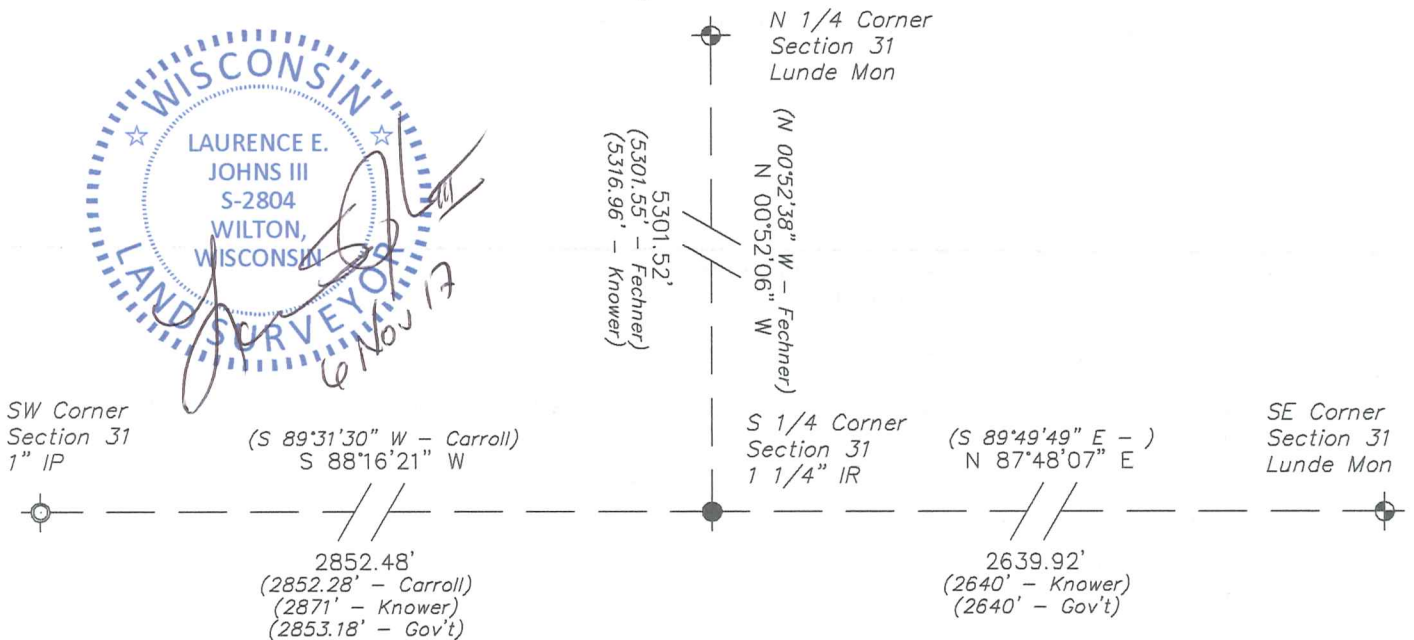
## RECORD OF DURABLE WITNESS MONUMENTS

NO	DESCRIPTION	BEARING	DISTANCE
1	Set 3/4" x 18" Iron Rod In Fence Line	N 02°22'59" E	82.97'
2	Set 3/4" x 18" Iron Rod In Fence Line	N 88°25'14" E	33.47'
3	Set 3/4" x 18" Iron Rod In Fence Line	S 01°22'35" E	55.77'
4	Set 3/4" x 18" Iron Rod In Fence Line	S 88°27'36" W	50.62'



### PLAN VIEW DRAWING OF REFERENCE TIES

*Map Showing Distance And Direction To Other Public Land Survey Corners Used For Re-Establishing The Corner*

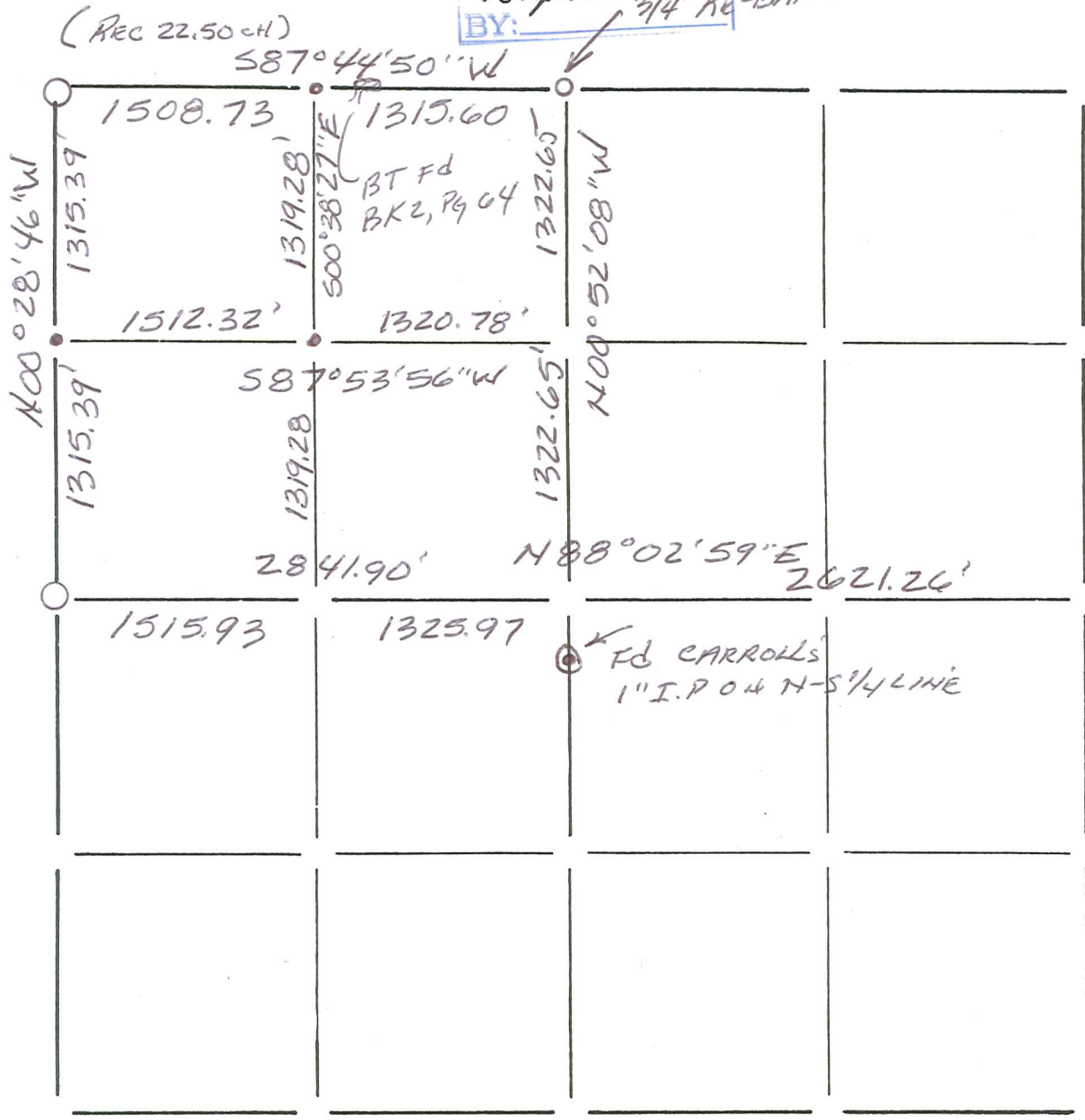


I, Laurence E Johns III PLS 2804, Professional Land Surveyor, hereby certify that the corner location shown on this record was determined by me or under my direction and control, and that this U.S. Public Land Survey Monument Record is correct and complete to the best of my knowledge and belief.

Section Summary and Index

RECEIVED  
 AUG 14 2006  
 S. Johnson  
 BY: 3/4" RE-BAR FOR COR.

31 - 14N - 1E  
 Section Town Range



LEGEND

- ⊕ - Harrison cast iron monument.
- - Stone or concrete monument.
- - Other VERNON Co. Mon.
- 3/4" x 18" RE-BAR SET



Richard T. Blakeslee  
 8-10-06