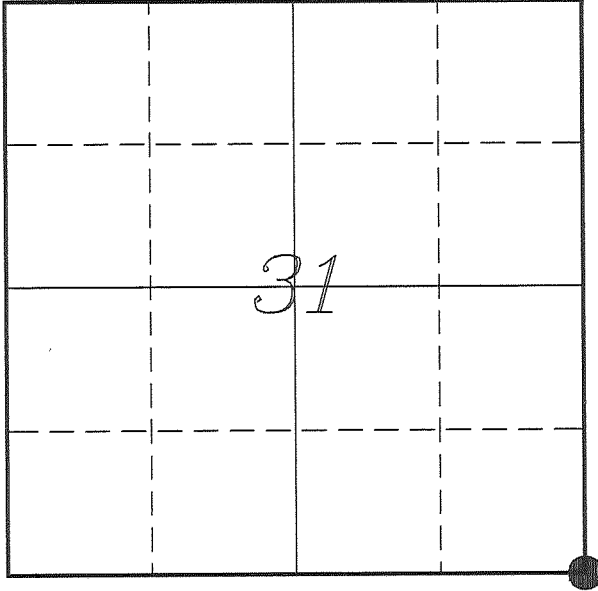


U. S. PUBLIC LAND SURVEY MONUMENT RECORD

**SECTION 31 T14N, R1E, TOWN OF HILLSBORO
VERNON COUNTY, WISCONSIN**



LOCATION OF LANDMARK

VERNON COUNTY COORDINATE SYSTEM	
Northing	179597.389
Easting	828332.815
Datum	NAD 1983 (2011)
Elevation	
Datum	
TYPE OF LANDMARK: Existing Lunde Monument 4" Brass Capped Iron Pipe	
BEARINGS ARE REFERENCED TO: Vernon County Coordinates (Survey Grade)	

Witnesses: Laurence E Johns III
Larry Handschy

Eagle Ridge Surveying
PO Box 213
Wilton, Wisconsin

Date: 10 August 2017

Describe any record evidence, monument evidence, testimonial evidence or any other material evidence you considered and whether the monument was found or restored through acceptance of an obliterated evidence location.

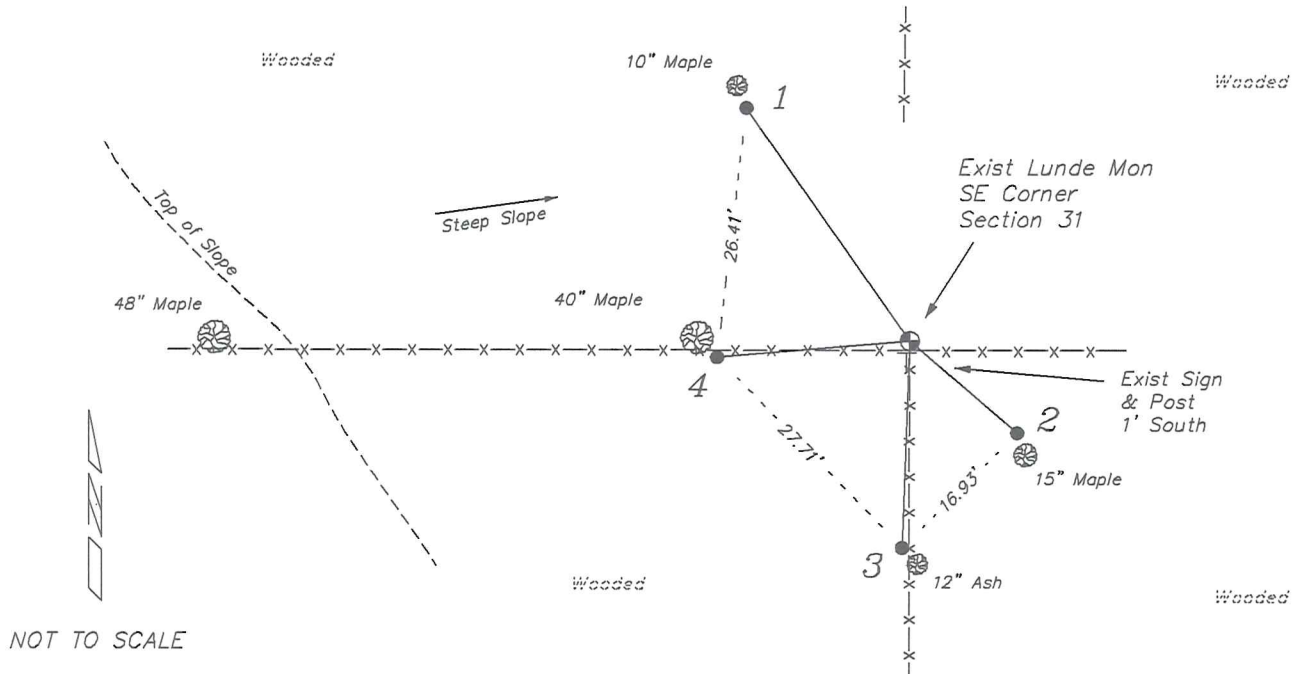
Found the Lunde Monument as shown on Blakeslee tie sheet and verified by all 4 of his ties.
The 4-way fence corner has been maintained for a long time as shown on Chafer's survey in 1984.
Distances to the South, West and North fit well with government distances and with Knower's survey. The distance to the East is quite short but has not be measured since the original survey. Terrain may have been an issue in this line.
I accepted the existing Lunde Monument with supporting occupation as the best available evidence of the original government corner.

Describe or show any material discrepancy between the location of the restored corner and that of the corner previously restored or re-established.

J E Whitcher established this corner in March 1845.
Wm Knower was at this corner, in January 1879, during a survey in Section 31. He does not show if he found the government corner or re-established it.
Paul Chafer was at this corner, in June 1984, during a survey in Section 5. He shows that he set a 1" iron pipe at a fence corner.
Richard Blakeslee was at this corner, in July 2006, during a survey in Section 5. He shows he set a Vernon County Monument and prepared a tie sheet.
Patrick Carroll was at this corner, in May 2013, during a survey in Section 32. He shows he found a 1" iron pipe.

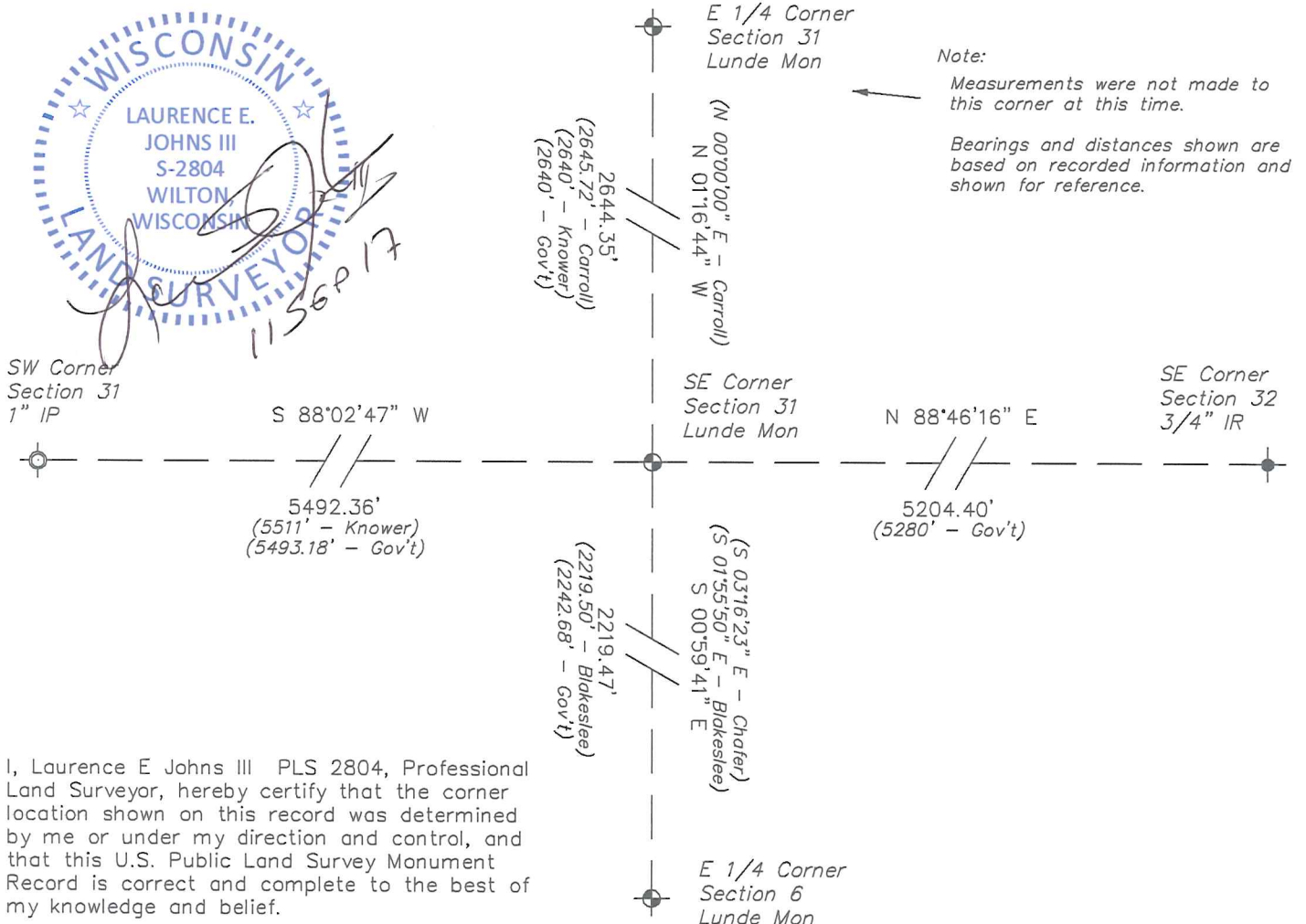
RECORD OF DURABLE WITNESS MONUMENTS

NO	DESCRIPTION	BEARING	DISTANCE
1	Existing 3/4" Iron Rod – Blakeslee 2' South of a 10" Maple	N 34°39'01" W	29.85' (30.07')
2	Existing 3/4" Iron Rod – Blakeslee 2' North of a 15" Maple	S 49°11'57" E	14.75' (14.65')
3	Existing 3/4" Iron Rod – Blakeslee 2' Northwest of a 12" Ash	S 02°04'29" W	21.65' (21.90')
4	Existing 3/4" Iron Rod – Blakeslee 1' Southeast of a 40" Maple	S 85°12'00" W	20.08' (20.80')



PLAN VIEW DRAWING OF REFERENCE TIES

Map Showing Distance And Direction To Other Public Land Survey Corners Used For Re-Establishing The Corner



I, Laurence E Johns III PLS 2804, Professional Land Surveyor, hereby certify that the corner location shown on this record was determined by me or under my direction and control, and that this U.S. Public Land Survey Monument Record is correct and complete to the best of my knowledge and belief.

VERNON COUNTY CERTIFIED U.S. PUBLIC LAND SURVEY MONUMENT RECORD

INSTRUCTIONS: THIS RECORD SHALL SHOW THE LOCATION OF THE CORNER AND SHALL INCLUDE ALL OF THE FOLLOWING ELEMENTS (A-I)

(A) IDENTIFY THE CORNER BY REFERENCE TO THE U.S. PUBLIC LAND SURVEY SYSTEM

VERNON COUNTY MONUMENT SET

■ = CORNER MONUMENT RESTORED

WITNESSES TO CORNER LOCATION:

- 1) Richard Blakeslee
- 2) Josh Murphy
- 3)

STATE PLANE COORDINATES (WISCONSIN SOUTH ZONE)

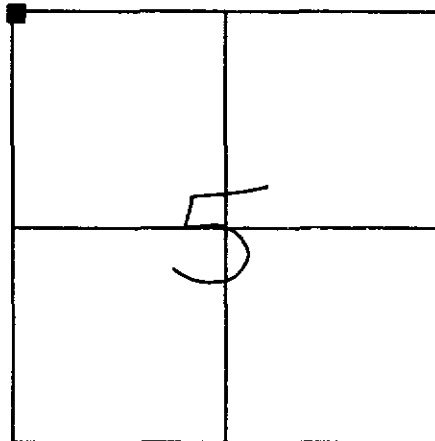
NORTHING:

EASTING:

VERNON COUNTY COORDINATES

NORTHING:

EASTING:



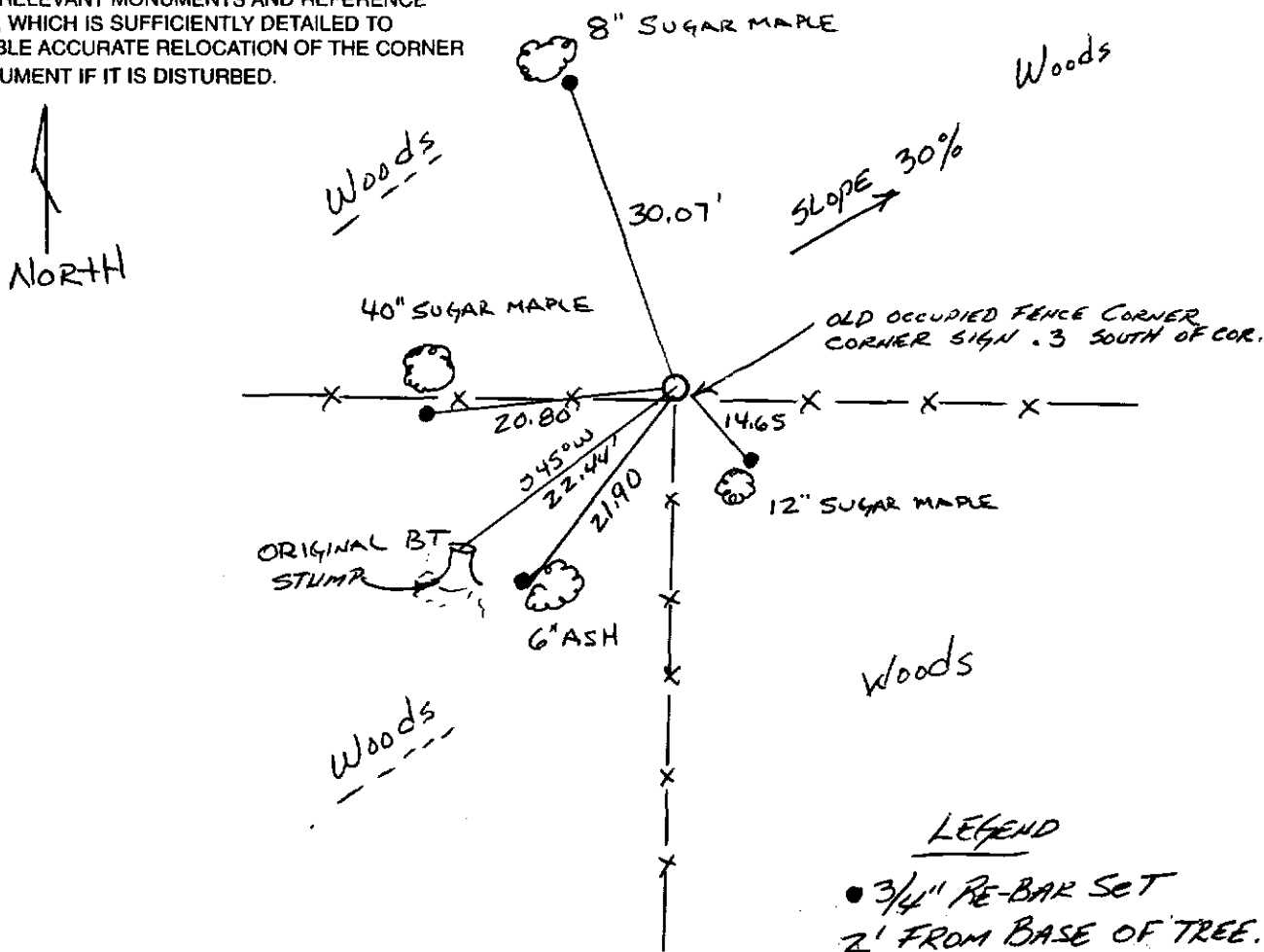
SECTION 5, TOWN 13 NORTH, RANGE 1 EAST

(B) DESCRIBE ANY RECORD EVIDENCE, MONUMENT EVIDENCE, OCCUPATIONAL EVIDENCE, TESTIMONIAL EVIDENCE OR ANY OTHER MATERIAL EVIDENCE YOU CONSIDERED, AND WHETHER THE MONUMENT WAS FOUND OR PLACED.

Found Original Gov't bearing tree. Found rotted 30" stump S45°W, 34 links per original Notes.

(C) IN THE PLAN VIEW DRAWING BELOW, PROVIDE REFERENCE TIES TO AT LEAST 4 WITNESS MONUMENTS OR, IF THE LOCATION IS WITHIN A MUNICIPALITY, TO AT LEAST 2 WITNESS MONUMENTS. (WITNESS MONUMENTS SHALL BE MADE OF CONCRETE, NATURAL STONE, IRON, OR OTHER EQUALLY DURABLE MATERIAL.) DESCRIBE WITNESS MONUMENTS.

(D) SHOW A PLAN VIEW DRAWING, DEPICTING THE RELEVANT MONUMENTS AND REFERENCE TIES, WHICH IS SUFFICIENTLY DETAILED TO ENABLE ACCURATE RELOCATION OF THE CORNER MONUMENT IF IT IS DISTURBED.



(E) DESCRIBE ANY MATERIAL DISCREPANCY BETWEEN THE LOCATION OF THE CORNER AS RESTORED OR REESTABLISHED AND THE LOCATION OF THAT CORNER AS PREVIOUSLY RESTORED OR REESTABLISHED BY DISTANCE AND DIRECTION. SHOW THE DISCREPANCY ON THE PLAN VIEW DRAWING UNDER (D), ABOVE. SHOW THE DISTANCES BETWEEN THE CORNER AS PREVIOUSLY RESTORED OR REESTABLISHED AND (1) THE CORNER AS RESTORED OR REESTABLISHED, AND (2) TO AT LEAST 2 OF THE WITNESS MONUMENTS AS SHOWN ON THE DRAWING IN (D), ABOVE.

N/A

(F) WAS THE CORNER RESTORED THROUGH ACCEPTANCE OF (1) AN OBLITERATED EVIDENCE LOCATION, OR (2) A FOUND PERPETUATED LOCATION?

N/A.

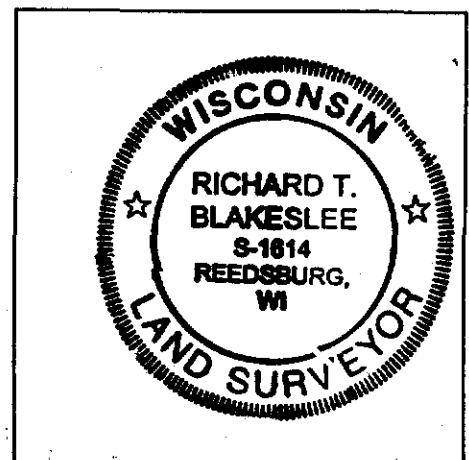
(G & H) WAS THE CORNER REESTABLISHED THROUGH LOST CORNER PROPORTIONATE METHODS? IF SO SHOW THE METHOD, INCLUDING THE DIRECTION AND DISTANCES TO OTHER PUBLIC LAND SURVEY CORNERS USED AS EVIDENCE OR USED FOR PROPORTIONING IN DETERMINING THE CORNER LOCATION.

N/A

AFFIX LAND SURVEYOR SEAL

(I) I, Richard Blakeslee CERTIFY THAT THE LOCATION SHOWN ON THIS RECORD WAS DETERMINED BY ME OR UNDER MY DIRECTION AND CONTROL AND THAT THIS U.S. PUBLIC LAND SURVEY MONUMENT RECORD IS CORRECT AND COMPLETE TO THE BEST OF MY KNOWLEDGE AND BELIEF.

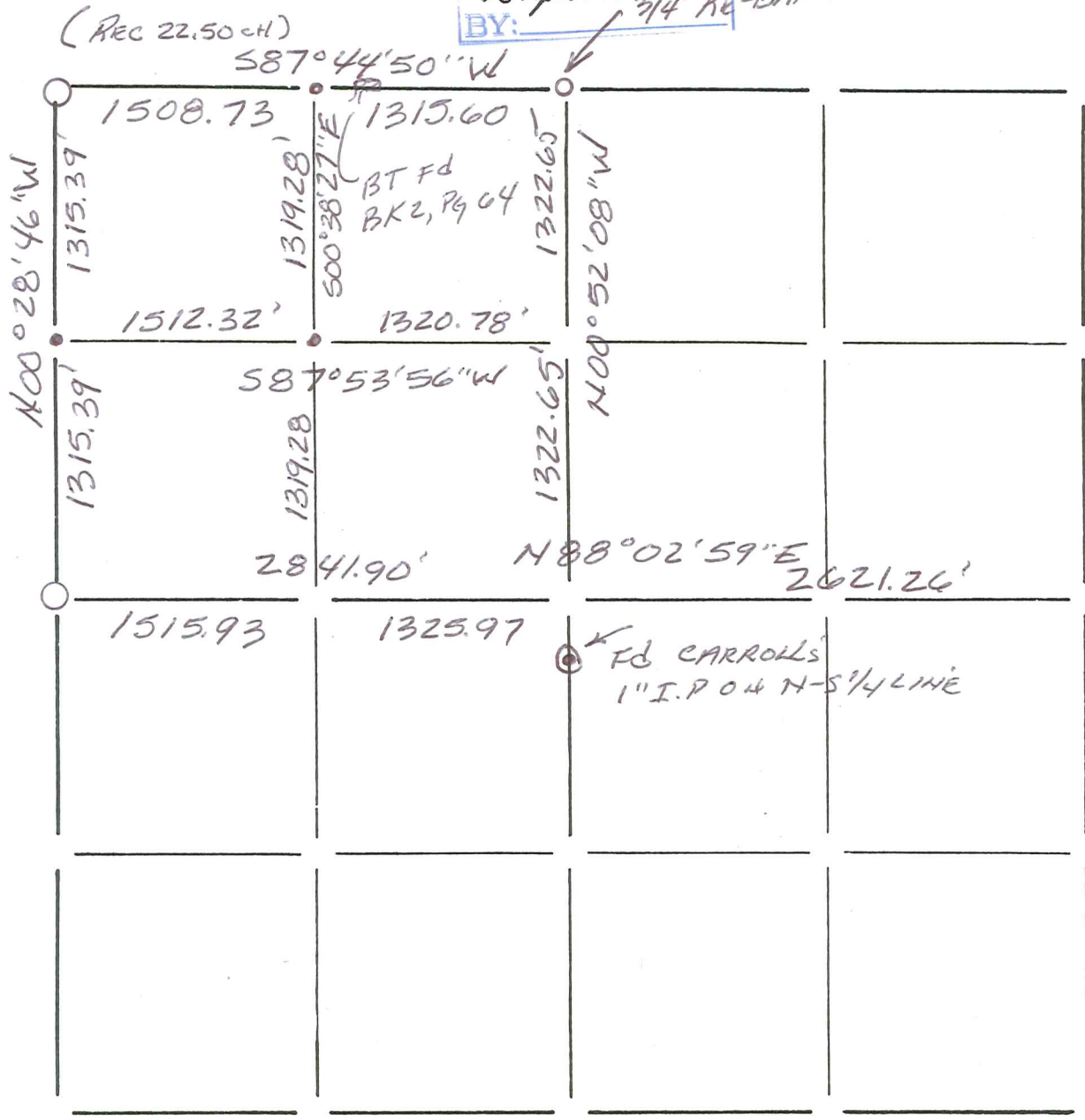
Richard T. Blakeslee 6-18-06
SIGNATURE DATE



Section Summary and Index

RECEIVED
 AUG 14 2006
 S. Johnson
 BY: 3/4" RE-BAR FOR COR.

31 - 14N - 1E
 Section Town Range



LEGEND

- ⊕ - Harrison cast iron monument.
- - Stone or concrete monument.
- - Other VERNON Co. Mon.
- - 3/4" x 18" RE-BAR SET



Richard T. Blakeslee
 8-10-06