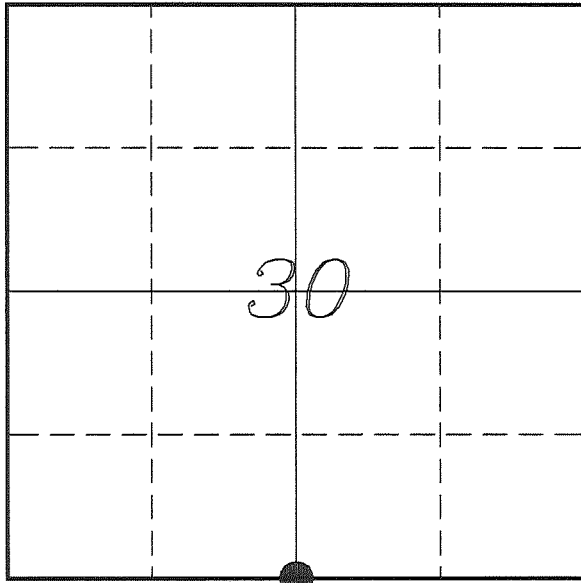

U. S. PUBLIC LAND SURVEY MONUMENT RECORD

**SECTION 30, T14N, R1E, TOWN OF HILLSBORO
VERNON COUNTY, WISCONSIN**


LOCATION OF LANDMARK

Witnesses: Larry Handschy
Al Hoff

Date: 19 July 2017

VERNON COUNTY COORDINATE SYSTEM	
Northing	184797.050
Easting	825614.498
Datum	NAD 1983 (2011)
Elevation	
Datum	
TYPE OF LANDMARK: Set Lunde Monument 4" Brass Capped Iron Pipe	
BEARINGS ARE REFERENCED TO: Vernon County Coordinates (Survey Grade)	

Eagle Ridge Surveying
PO Box 213
Wilton, Wisconsin

Describe any record evidence, monument evidence, testimonial evidence or any other material evidence you considered and whether the monument was found or restored through acceptance of an obliterated evidence location.

Found the 3/4" iron rod as shown on Cornell's tie sheet.

This location fits well with other corners and is located $1.8' \pm$ South of the straight line and $30' \pm$ East of the prorated location. There is a fence along most of the North/South quarter line of Section 30 and also the South half of Section 31, this corner matches this occupation.

I accepted the 3/4" iron rod as the best available evidence of the original government corner and replaced it with a Lunde Monument.

Describe or show any material discrepancy between the location of the restored corner and that of the corner previously restored or re-established.

John E Davidson established this corner in December 1852.

Wm Knower was at this corner, in January 1870, during a survey in Section 31. He does not mention if he found the corner or re-established it.

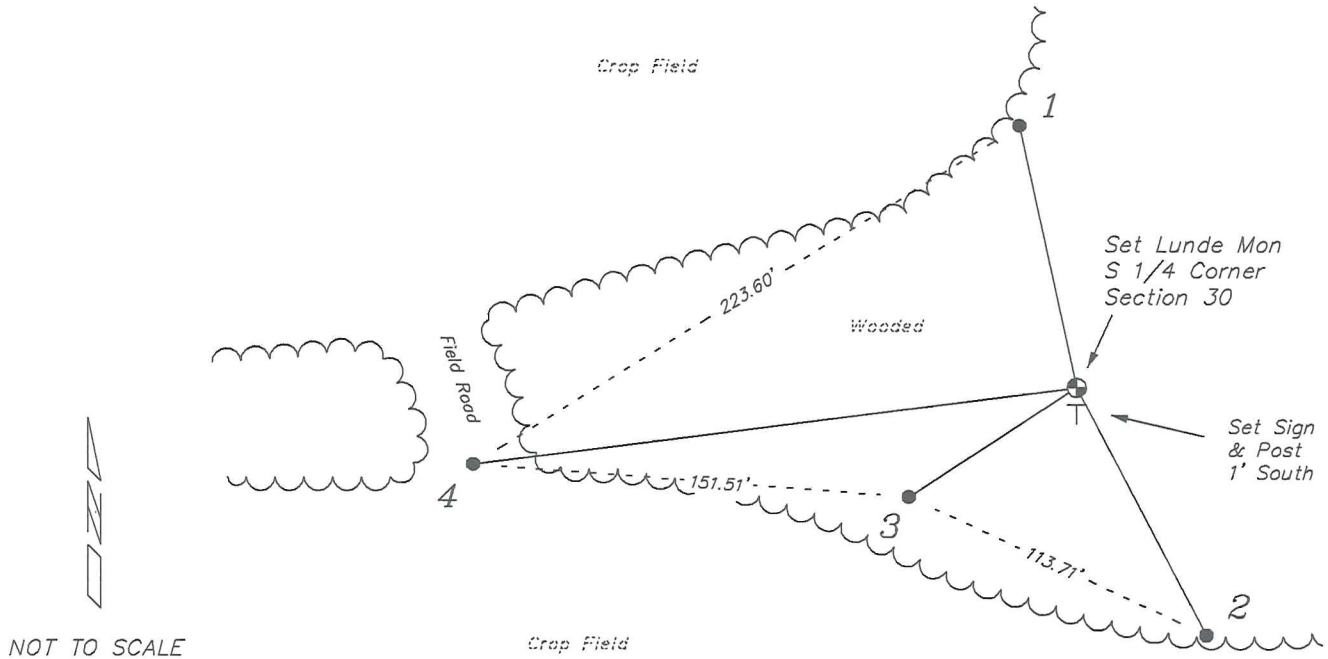
Terry Cornell was at this corner, in March 1997, during a survey in Section 30. He shows he found a 3/4" iron bar at a fence corner and prepared a tie sheet.

Richard Blakeslee was at this corner, in August 2006, during a survey in Sections 30 & 31. He shows he found a 3/4" iron rod.

Christopher Fechner was at this corner, in December 2015, during a survey in Section 31. He shows he found a 3/4" iron rod.

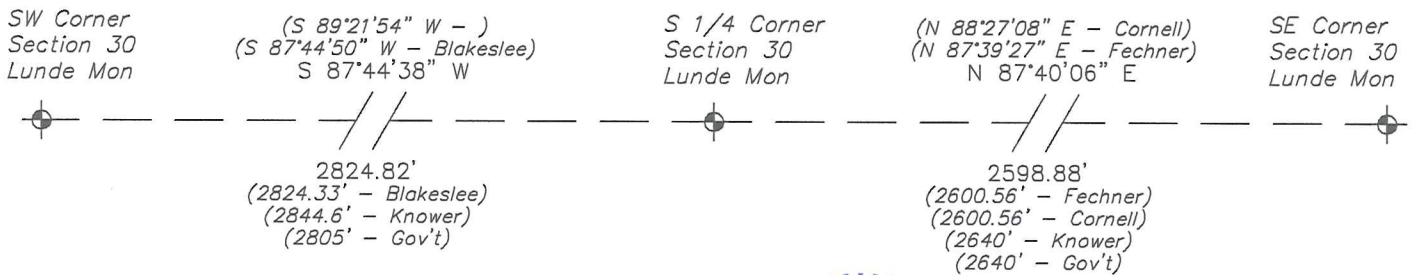
RECORD OF DURABLE WITNESS MONUMENTS

NO	DESCRIPTION	BEARING	DISTANCE
1	Set 3/4" x 18" Iron Rod 10' West of a 14" Cherry	N 12°07'41" W	93.91'
2	Set 3/4" x 18" Iron Rod 3' South of a 26" Cherry	S 27°31'30" E	97.20'
3	Set 3/4" x 18" Iron Rod 3' South of a 16" Elm	S 56°43'04" W	69.56'
4	Set 3/4" x 18" Iron Rod Centerline of a Field Road	S 82°41'03" W	210.96'

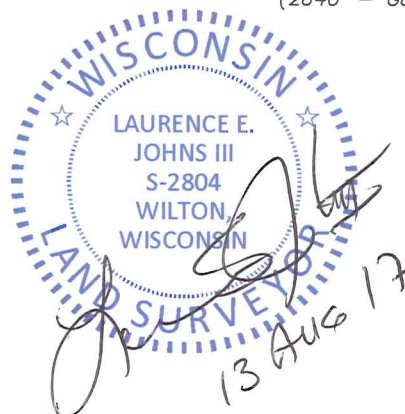


PLAN VIEW DRAWING OF REFERENCE TIES

Map Showing Distance And Direction To Other Public Land Survey
Corners Used For Re-Establishing The Corner



I, Laurence E Johns III PLS 2804, Professional Land Surveyor, hereby certify that the corner location shown on this record was determined by me or under my direction and control, and that this U.S. Public Land Survey Monument Record is correct and complete to the best of my knowledge and belief.



OCT 18 1997

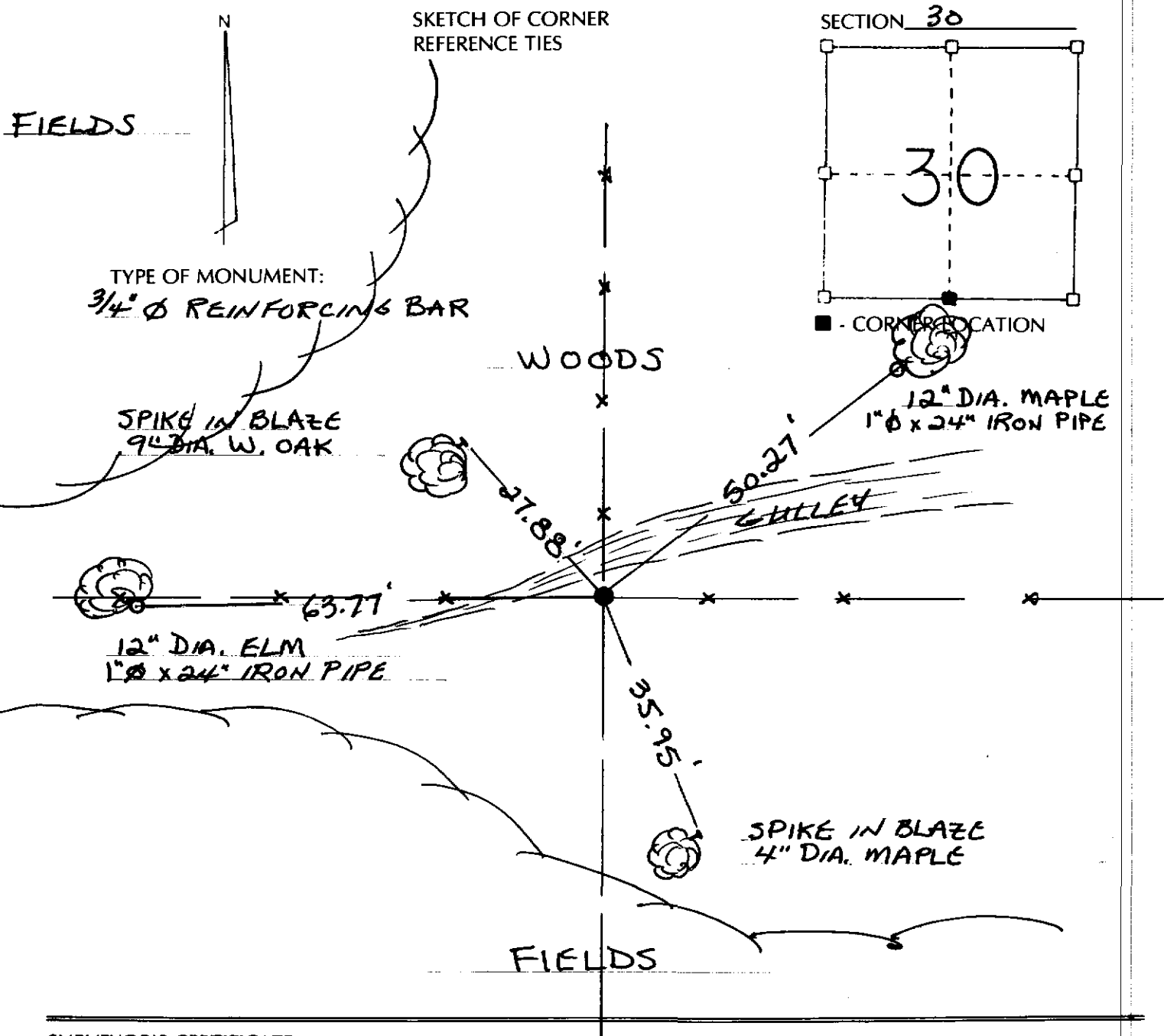
RECORD OF CORNER MONUMENTATION

SOUTH QUARTER CORNER SECTION 30 TOWNSHIP 14 N RANGE 1 EAST
VERNON COUNTY, WISCONSIN

STATE PLANE COORDINATES OF _____
(Y) NORTH _____
(X) EAST _____

ELEVATION _____

HORIZONTAL DATUM: WISCONSIN STATE PLANE COORDINATE SYSTEM, SOUTH ZONE

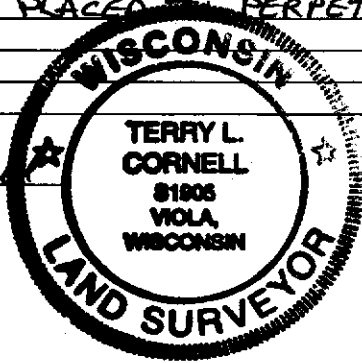


SURVEYOR'S CERTIFICATE
(STATE OF WISCONSIN)

I HEREBY CERTIFY THAT WHILE PERFORMING A SURVEY FOR ALLAN WYNVEEN,
DURING MARCH 1997, WE DID FIND A 3/4" DIAMETER REINFORCING BAR
AT AN EXISTING FENCE CORNER. THIS REBAR WAS ACCEPTED AS
THE CORNER AND THE TIES SHOWN ABOVE PLACED TO PERPETUATE
SAID LOCATION.

DATED THIS 10th DAY OF
October 1997

Terry L. Cornell
REGISTERED LAND SURVEYOR
S-1905

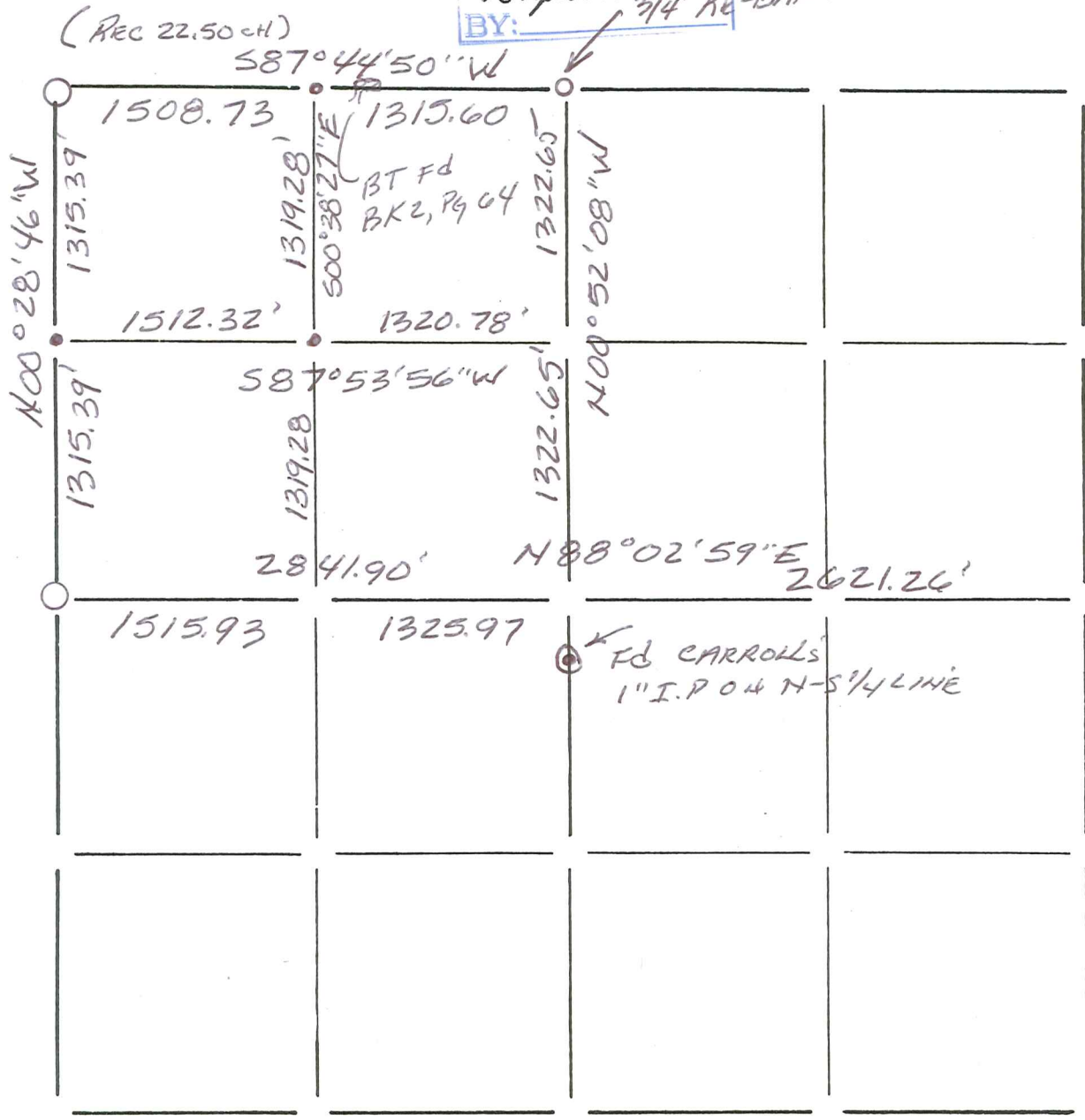


(47)

Section Summary and Index

RECEIVED
 AUG 14 2006
 S. Jacobson
 BY: 3/4" RE-BAR FOR COR.

31 - 14N - 1E
 Section Town Range



LEGEND

- ⊕ - Harrison cast iron monument.
- - Stone or concrete monument.
- - Other VERNON Co. Mon.
- 3/4" x 18" RE-BAR SET



Richard T. Blakeslee
 8-10-06